

Contents

Part 1: Summary A summary of unemployment data at district, County, regional and national level	1
Part 2: County Unemployment figures for the County compared to the South West and the rest of the UK	3
Part 3: Districts A comparative break down of unemployment figures by district	4
Part 4: Wards Further breakdown of unemployment figures by ward:	
Cheltenham	6
Cotswolds	8
Forest of Dean	10
Gloucester	12
Stroud	14
Tewkesbury	16
Part 5: Young People Data from Connexions about Young People Not in Education, Employment or Training (NEET)	18

INTRODUCTION

The Unemployment Bulletin provides a monthly update on unemployment data for Gloucestershire, the South West region and the United Kingdom. It is produced by the Economic section of the County Council Chief Executive's Support Unit Research Team. The data is sourced from the Office for National Statistics via Nomis (www.nomis.co.uk).

The claimant count measures the number of people claiming unemployment-related benefit (currently Job Seeker's allowance). The claimant rate is the number of claimants as a proportion of the working age population.

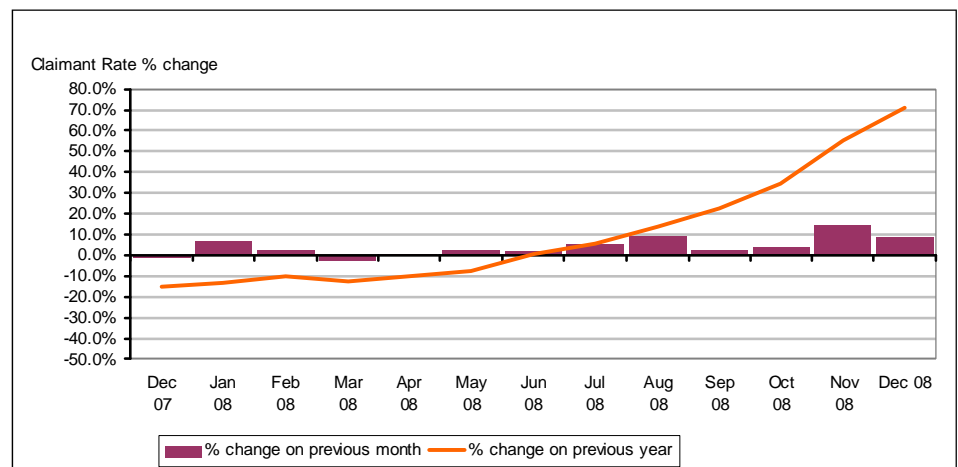
PART 1: SUMMARY

The claimant rate in Gloucestershire was 2.3% in December 2008. This was an increase of 0.1% on the November 2008 figure. The rate has been continually increasing since July 2008. Both the UK and the South West rates increased by 0.2% between November 2008 and December 2008. Gloucestershire's rate remains slightly above the South West average of 2.1%, but 0.7% lower than the UK average of 3%.

The claimant count in Gloucestershire in December 2008 rose by 658 people. The amount of people claiming in December 2008 was 9% higher than the number in November 2008 compared to 12% in the South West and 9% for the UK.

The claimant count in Gloucestershire has been increasing since July 2008, it was 71% higher in December 2008 than at the same point in the previous year as shown in the graph below.

Gloucestershire claimants - Month on Month and Year on Year change



Source: ONS Crown Copyright Reserved

Produced by:

The Research Team (Economics)
Chief Executive Support Unit
Gloucestershire County Council
January 2009

DISTRICTS AT A GLANCE

At a glance unemployment information grouped by district. Includes:

Claim count: Total number of people claiming Job Seekers Allowance in December 2008

Compared to last month: How much larger/smaller December's claim count is compared to November, expressed as a %

Claimant rate: The % of working population claiming Job Seekers Allowance in December 2008

Highest claiming ward: The ward with the highest claim count in that district

CHELTENHAM BOROUGH

Claim count:	1,978
Compared to last month:	+7.3%
Claimant rate:	2.8%
Highest claiming ward	Hesters Way (6.4%)

GLOUCESTER CITY

Claim count:	2,221
Compared to last month:	+7.2%
Claimant rate:	3.1%
Highest claiming ward	Westgate (8.7%)

COTSWOLD DISTRICT

Claim count:	640
Compared to last month:	+5.3%
Claimant rate:	1.3%
Highest claiming ward	Cirencester Watermoor (3.7%)

STROUD DISTRICT

Claim count:	1,175
Compared to last month:	+9.6%
Claimant rate:	1.8%
Highest claiming ward	Central (4.4%)

FOREST OF DEAN

Claim count:	1,306
Compared to last month:	+13.9%
Claimant rate:	2.7%
Highest claiming ward	Cinderford West (5.6%)

TEWKESBURY BOROUGH

Claim count:	919
Compared to last month:	+9.4%
Claimant rate:	2.0%
Highest claiming ward	Tewkesbury Priors Park (4.5%)

YOUNG PEOPLE NOT IN EDUCATION, EMPLOYMENT OR TRAINING (NEET)

At the end of December 2008 there were 687 young people not in education, employment or training in Gloucestershire. In terms of the proportion of 16-18 year olds, this has remained in line with the strong performance of the previous month at 3.9%.

PART 2: UK, SW AND GLOUCESTERSHIRE INDICATORS

The unemployment situation in Gloucestershire compared to the South West and the UK.

Claimant Rate

Figure 1: Claimant Rate for Gloucestershire, the South West and UK over the past year

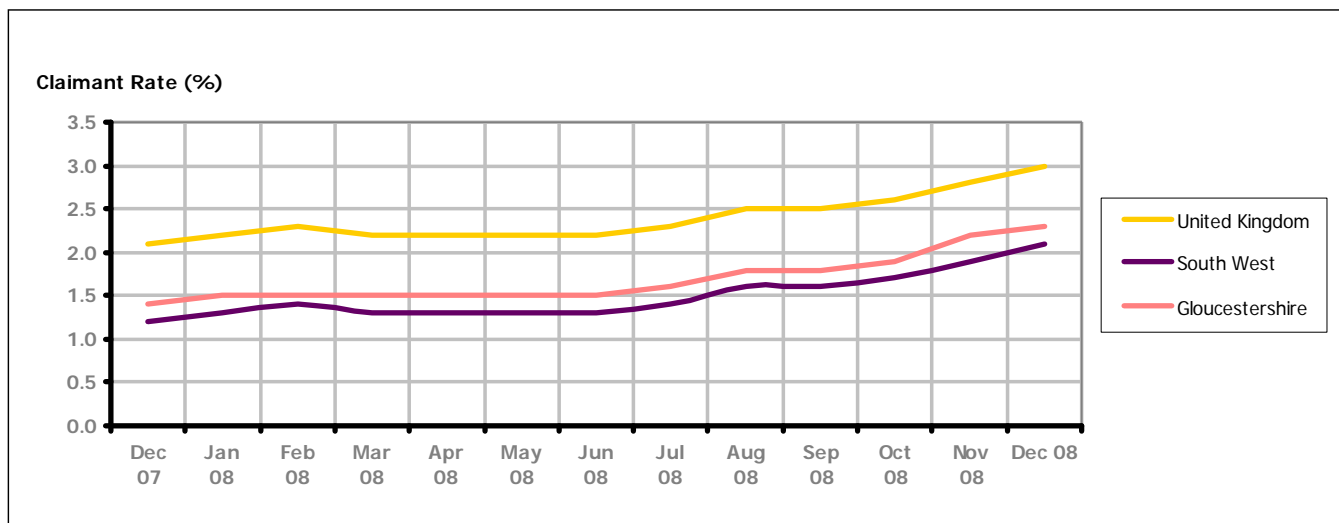


Figure 1 shows the claimant rate for Gloucestershire at 2.3% in December 2008. The rate has remained slightly higher than the South West average over the past year, but persistently lower by approximately 0.7% against the UK average during the same period. December 2008 represented a 0.2% increase on November 2008.

Claimant Count

Table 1: Analysis of UK, South West and Gloucestershire Claimant Counts

Area	Claimant Count in December 2008	% change on November 2008	Average % increase over the last six months	Consecutive months increasing
UK	1,153,328	9.2	4.8	8
South West	66,710	12.1	7.3	8
Gloucestershire	8,239	8.7	6.3	9

Table 1 shows that in December 2008, the numbers of claimants in Gloucestershire was 8.7% higher than the numbers in November 2008. This is slightly lower than the UK figure and some 3.4% lower than the South West.

The average growth in claimants in Gloucestershire for the six months to December 2008 was 6.3%. This is 1.5% higher than the UK average and 1.0% lower than the South West region.

PART 3: LOCAL AUTHORITY DISTRICT ANALYSIS

Claimant Rate and Claimant Count

Figure 2: Claimant Rate (%) across Gloucestershire - December 2008

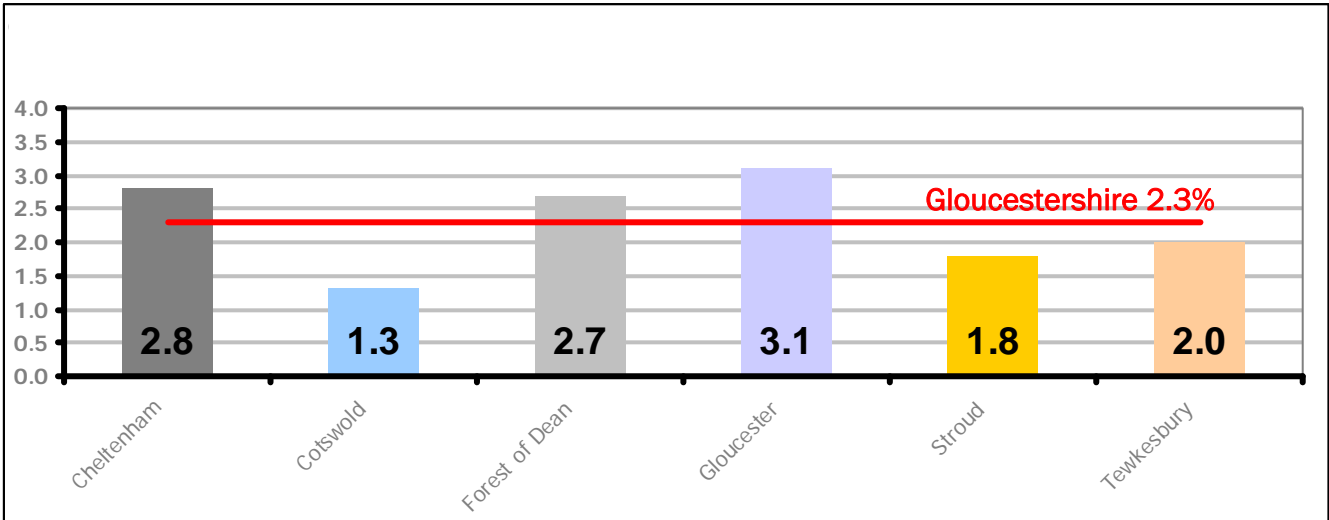


Figure 2 shows the claimant rate for December 2008 in Gloucestershire. Every district in Gloucestershire experienced an increase in the claimant rate between November 2008 and December 2008.

Figure 3: Total claimants over the past year across Gloucestershire Districts

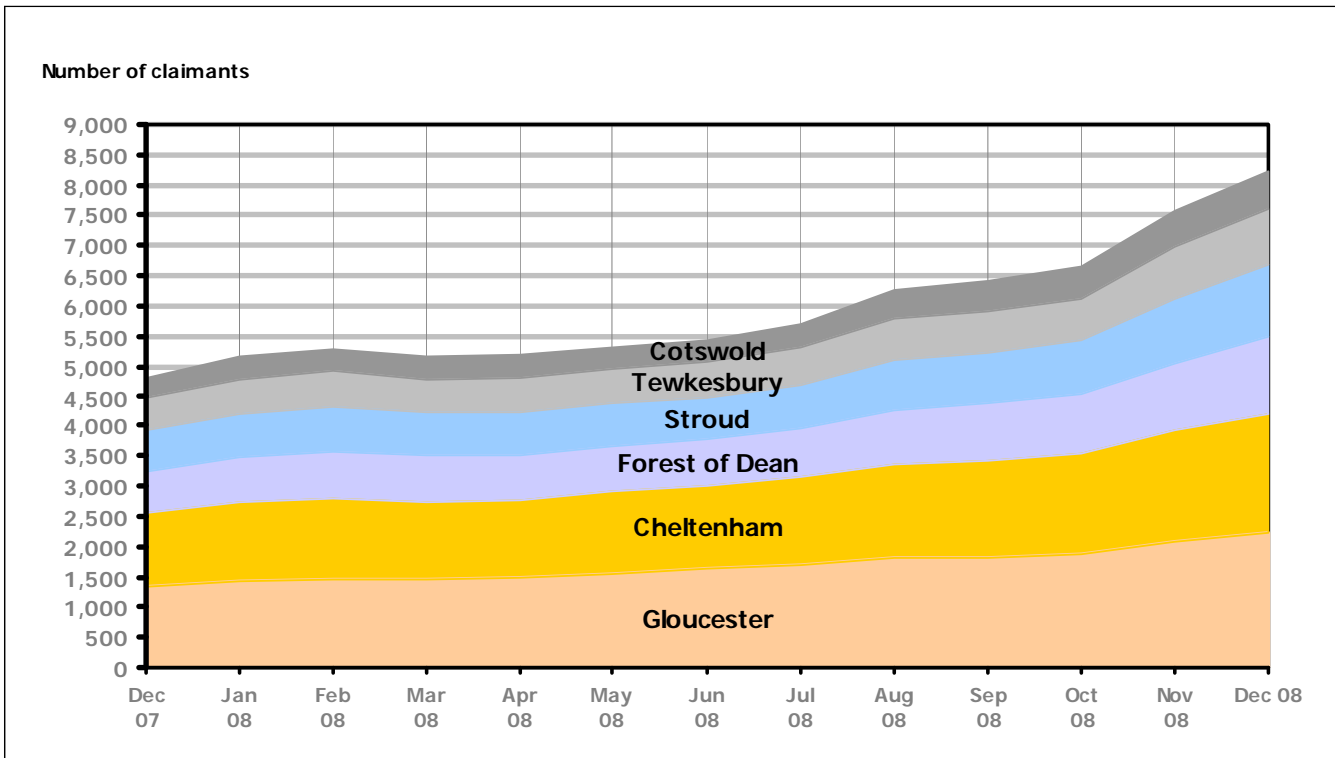


Figure 3 shows the overall claimant count for Gloucestershire over the past year. It demonstrates the gap that is widening across all the districts as the UK economy continues to move towards recession. The widest gaps unsurprisingly reflect the urban areas of Cheltenham and Gloucester.

Table 2: Analysis of Gloucestershire and District Claimant Counts

Area	Claimant Count in December 2008	% Change on November 2008	Average % increase over the last six months	Consecutive months increasing
Cheltenham	1,978	7.3	5.2	9
Cotswold	640	5.3	8.4	6
Forest of Dean	1,306	13.9	8.4	7
Gloucester	2,221	7.2	4.7	3
Stroud	1,175	9.6	8.2	3
Tewkesbury	919	9.4	6.4	2
Gloucestershire	8,239	8.7	6.3	9

Table 2 shows the change in the claimant count in December 2008 compared to November 2008. The December 2008 increase was experienced across all six districts. The Forest of Dean District showed the greatest increase from the previous month as well as the highest average percentage increase over the last six months which it shares with Cotswold District.

PART 4: LOCAL AUTHORITY DISTRICT AND WARD ANALYSIS

This section covers the six districts and a comparison of their constituent wards.

4.1 Cheltenham Borough

Claimant Rate and Claimant Count

Figure 4: Cheltenham Borough claimant rate over the last year

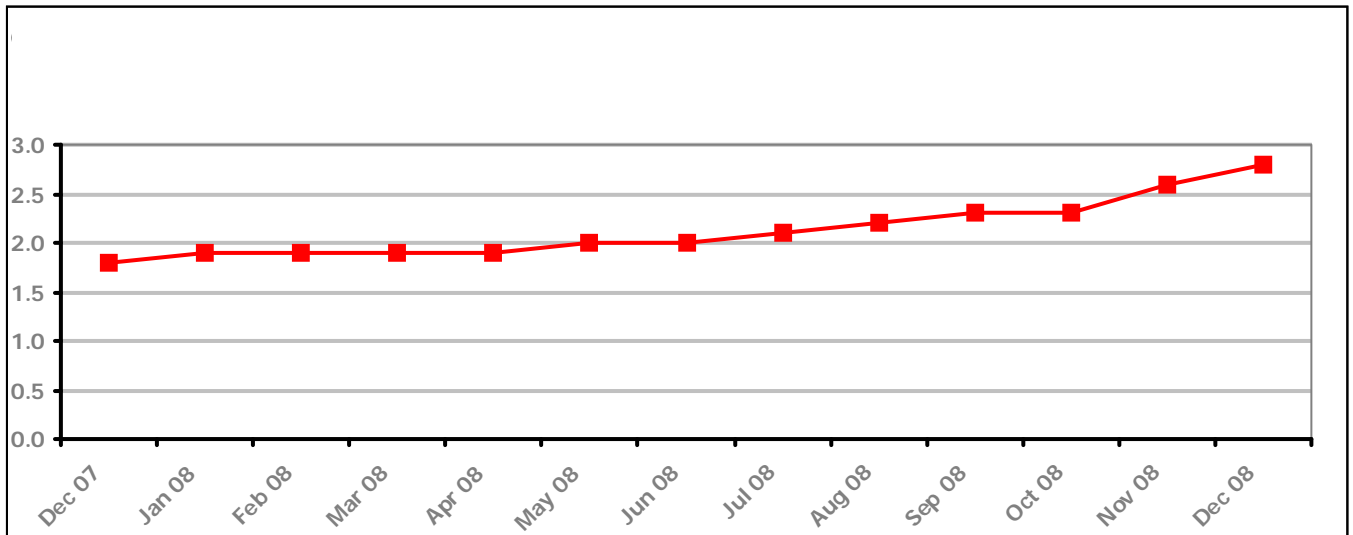


Figure 4 shows the claimant rate in Cheltenham was at its highest for over a year at 2.8%. The rate has been climbing for eight consecutive months.

Figure 5: Cheltenham Borough claimants - Month on Month and Year on Year change

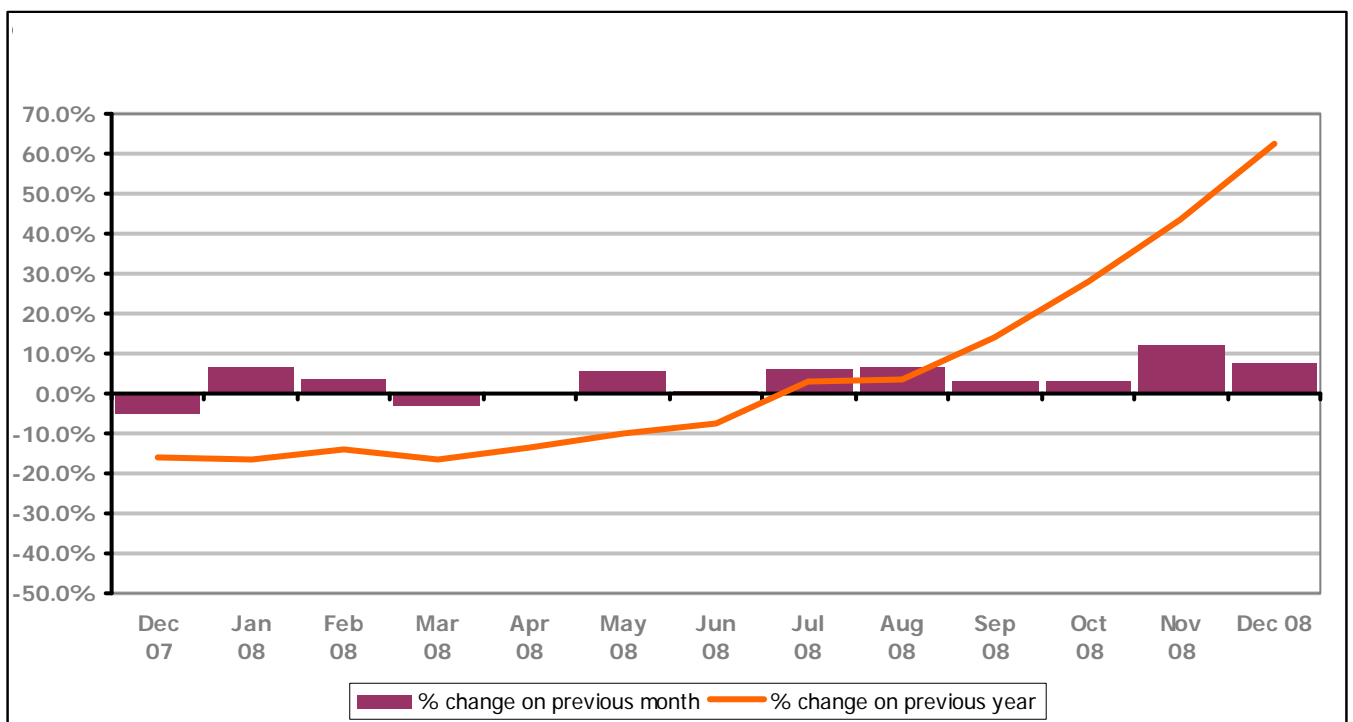


Figure 5 shows the claimant count continually increasing each month since April 2008. In addition, claimant counts have increased every month compared to the same month in the previous year since July 2008.

PART 4: LOCAL AUTHORITY DISTRICT AND WARD ANALYSIS

4.1 Cheltenham Borough continued...

Figure 6: Claimant rates across Cheltenham Borough wards - December 2008

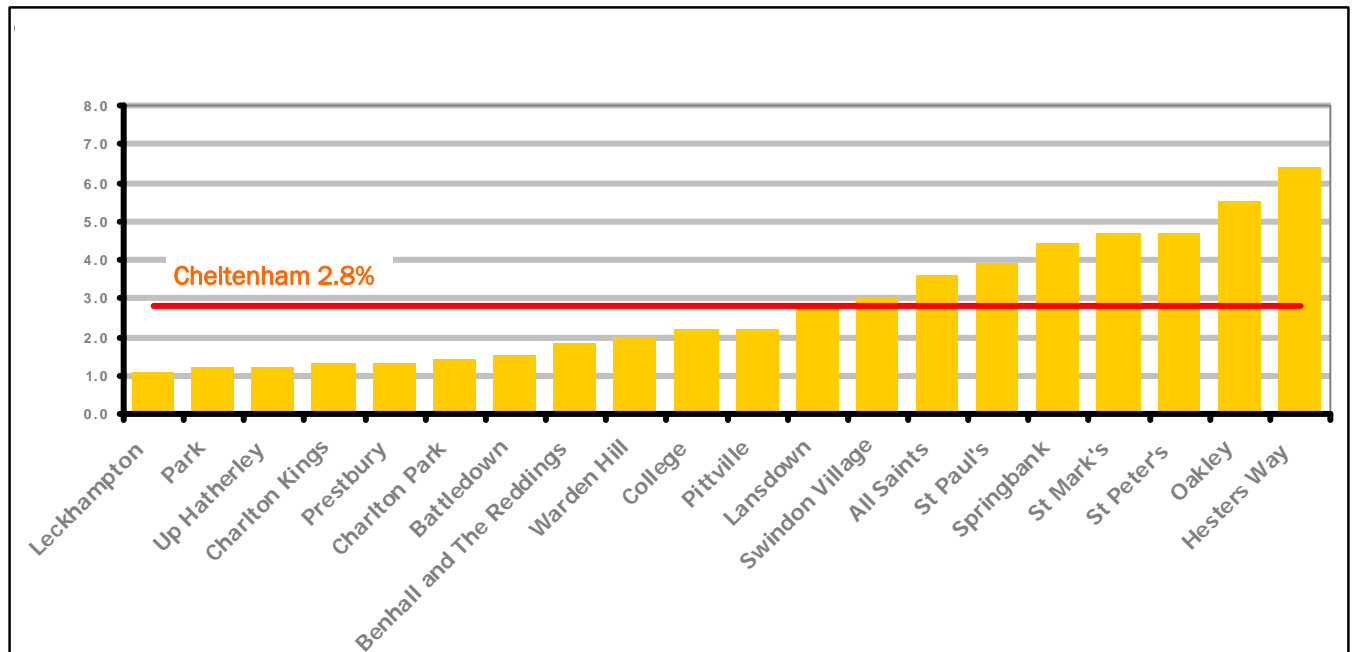


Figure 6 shows the claimant rates for Cheltenham Borough wards. The red line represents the average claimant rate across the Borough, with eight wards above the average of 2.8%.

Table 3: Analysis of Claimant Count at Cheltenham Borough ward level - December 2008

District	Ward	Rate	Rank*
Cheltenham	Leckhampton	1.1	18
Cheltenham	Park	1.2	28
Cheltenham	Up Hatherley	1.2	28
Cheltenham	Charlton Kings	1.3	43
Cheltenham	Prestbury	1.3	43
Cheltenham	Charlton Park	1.4	51
Cheltenham	Battledown	1.5	62
Cheltenham	Benhall and The Reddings	1.8	74
Cheltenham	Warden Hill	2.0	84
Cheltenham	College	2.2	91
Cheltenham	Pittville	2.2	91
Cheltenham	Lansdown	2.8	107
Cheltenham	Swindon Village	3.0	113
Cheltenham	All Saints	3.6	120
Cheltenham	St Paul's	3.9	125
Cheltenham	Springbank	4.4	127
Cheltenham	St Mark's	4.7	132
Cheltenham	St Peter's	4.7	132
Cheltenham	Oakley	5.5	137
Cheltenham	Hesters Way	6.4	141

	bottom 10% of county
	first quartile of county
	second quartile of county
	third quartile of county
	fourth quartile of county
	highest 10% of county

* 1 = "best" and 142 = "worst"

Table 3 shows overall claimant rates for Cheltenham Borough wards and their position relative to all wards in Gloucestershire.

PART 4: LOCAL AUTHORITY DISTRICT AND WARD ANALYSIS

4.2 Cotswold District

Claimant Rate and Claimant Count

Figure 7: Cotswold District claimant rate over the last year

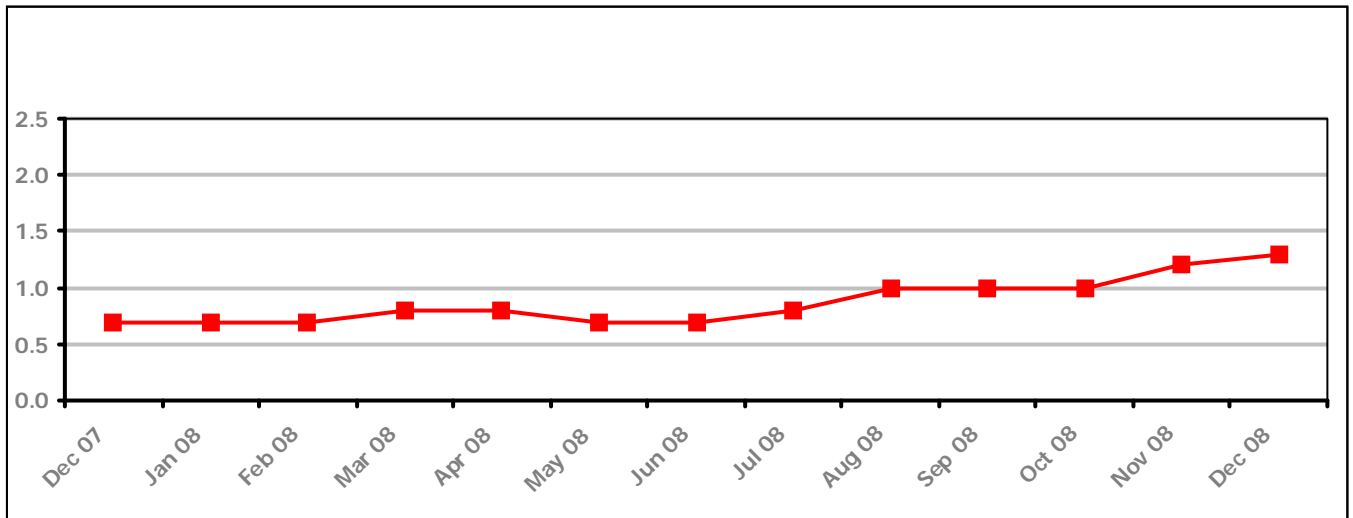


Figure 7 shows the claimant rate in Cotswold District was at its highest for over a year at 1.3%. The rate has been increasing since June 2008.

Figure 8: Cotswold District claimants - Month on Month and Year on Year change

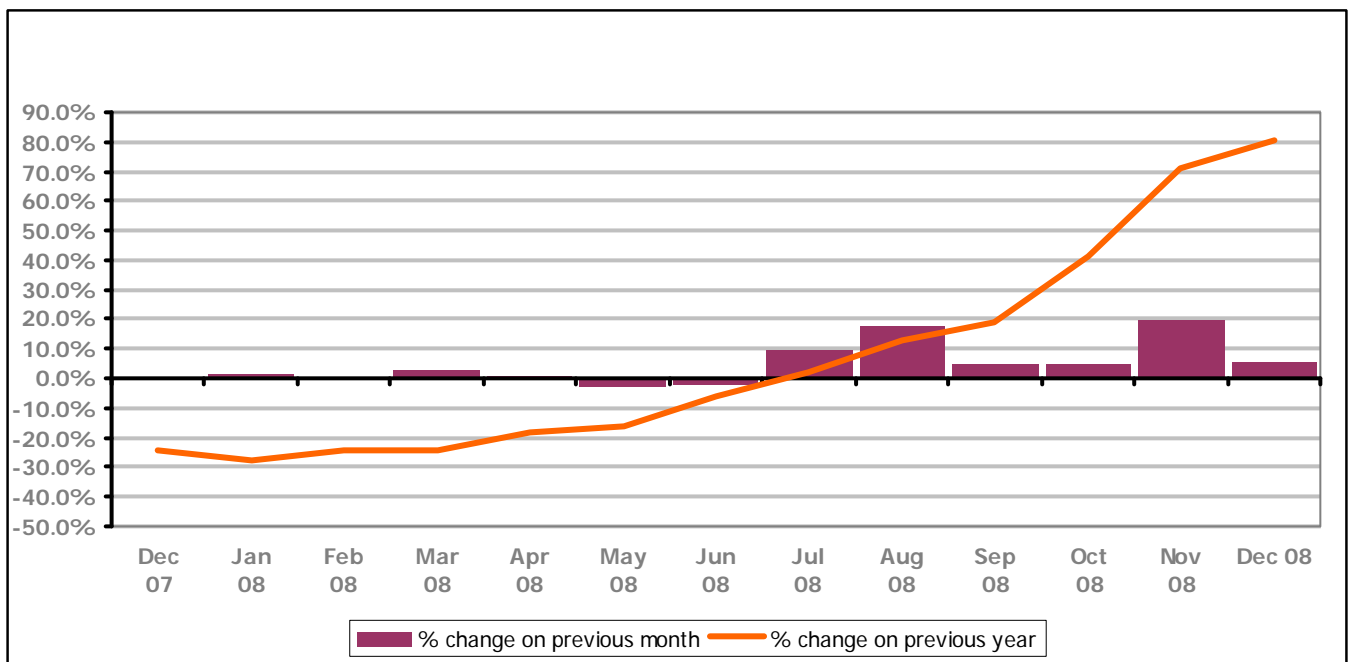


Figure 8 shows the claimant count increasing since July 2008. In addition, claimant counts are higher compared to the same month the previous year since July 2008. For example, in December 2008, the claimant count was over 80% higher than it was in December 2007.

PART 4: LOCAL AUTHORITY DISTRICT AND WARD ANALYSIS

4.2 Cotswold District continued...

Figure 9: Claimant rates across Cotswold District wards - December 2008

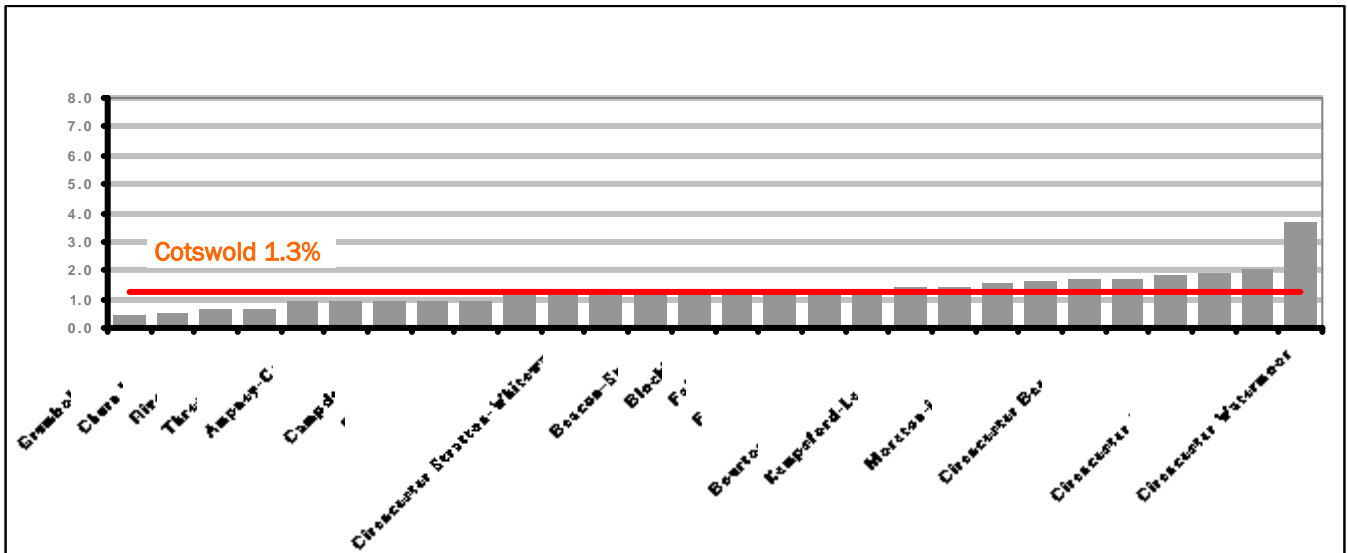
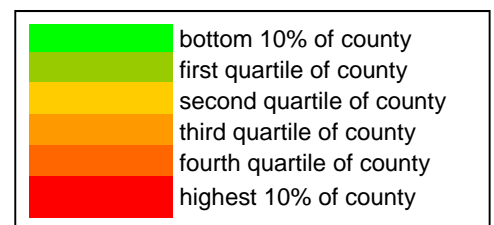


Figure 9 shows the claimant rates for Cotswold District wards. The red line represents the average claimant rate across the District. Ten wards above the District average of 1.3%

Table 4: Analysis of Claimant Count at Cotswold District ward level - December 2008

District	Ward	Rate	Rank*
Cotswolds	Grumbolds Ash	0.4	1
Cotswolds	Churn Valley	0.5	3
Cotswolds	Riversmeeth	0.6	4
Cotswolds	Three Rivers	0.6	4
Cotswolds	Ampney-Coln	0.9	9
Cotswolds	Avening	0.9	9
Cotswolds	Campan-Vale	0.9	9
Cotswolds	Rissingtons	0.9	9
Cotswolds	Water Park	0.9	9
Cotswolds	Chedworth	1.1	18
Cotswolds	Cirencester Stratton-Whiteway	1.1	18
Cotswolds	Ermin	1.1	18
Cotswolds	Beacon-Stow	1.2	28
Cotswolds	Blockley	1.2	28
Cotswolds	Fairford	1.2	28
Cotswolds	Fosseridge	1.2	28
Cotswolds	Hampton	1.2	28
Cotswolds	Bourton-on-the-Water	1.3	43
Cotswolds	Kempsford-Lechlade	1.4	51
Cotswolds	Sandywell	1.4	51
Cotswolds	Moreton-in-Marsh	1.5	62
Cotswolds	Thames Head	1.6	67
Cotswolds	Cirencester Beeches	1.7	71
Cotswolds	Tetbury	1.7	71
Cotswolds	Cirencester Park	1.8	74
Cotswolds	Cirencester Chesterton	1.9	79
Cotswolds	Northleach	2.0	84
Cotswolds	Cirencester Watermoor	3.7	122



* 1 = "best" and 142 = "worst"

Table 4 shows overall claimant rates for Cotswold District wards and their position relative to all wards in Gloucestershire.

PART 4: LOCAL AUTHORITY DISTRICT AND WARD ANALYSIS

4.3 Forest of Dean District

Claimant Rate and Claimant Count

Figure 10: Forest of Dean District claimant rate over the last year

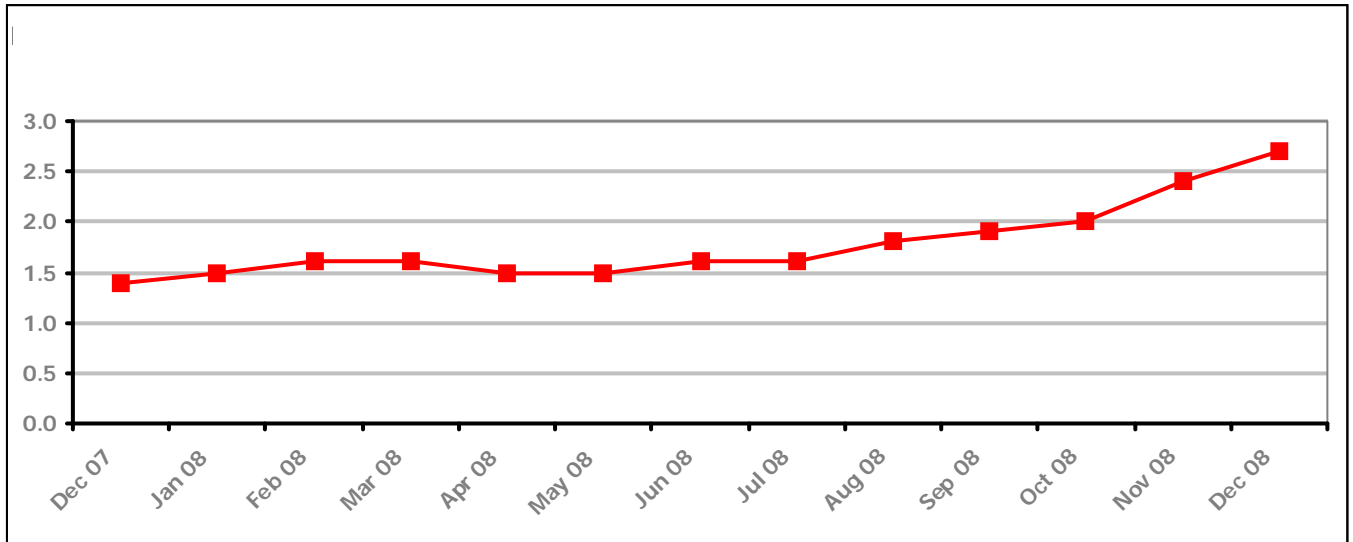


Figure 10 shows the claimant rate in the Forest of Dean was at its highest for over a year at 2.7%. The rate has been increasing since July 2008.

Figure 11: Forest of Dean District claimants - Month on Month and Year on Year change

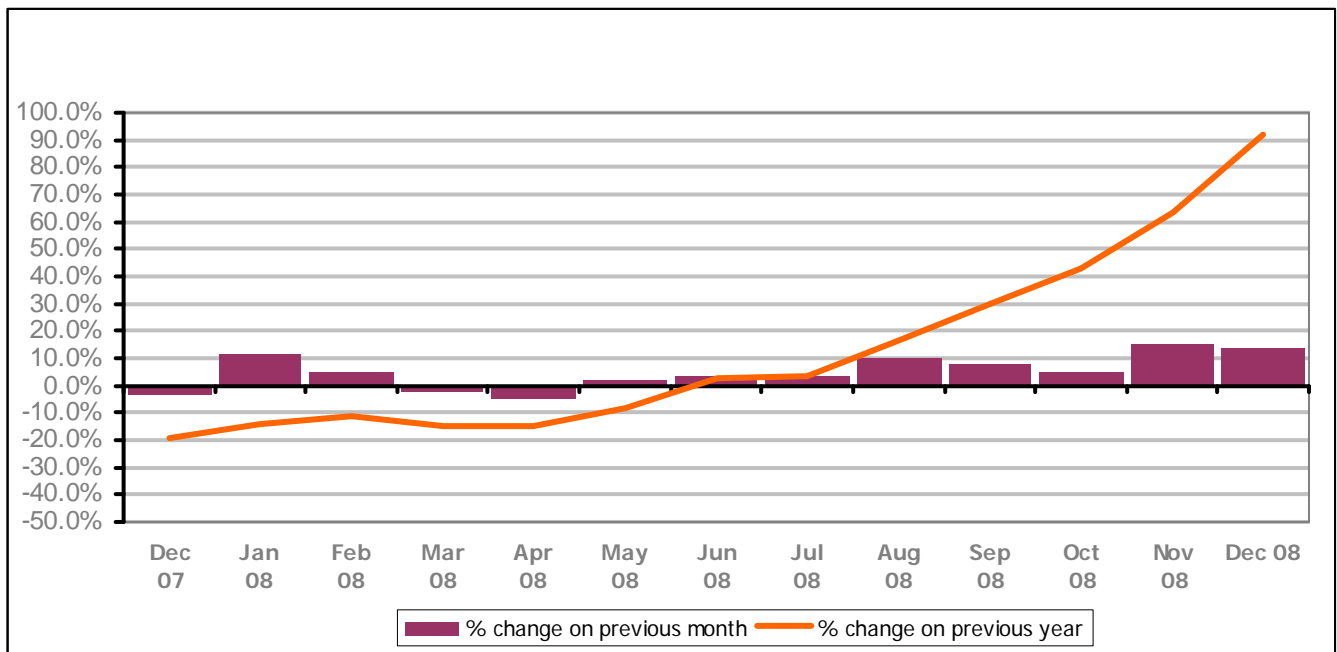


Figure 11 shows the claimant count has increased since May 2008, and that claimant count compared to the same month the previous year has been higher since June 2008. The number of claimants in December 2008 exceeded that of December 2007 by over 90%, an all time high in year on year change.

PART 4: LOCAL AUTHORITY DISTRICT AND WARD ANALYSIS

4.3 Forest of Dean District continued...

Figure 12: Claimant rates across Forest of Dean District wards - December 2008

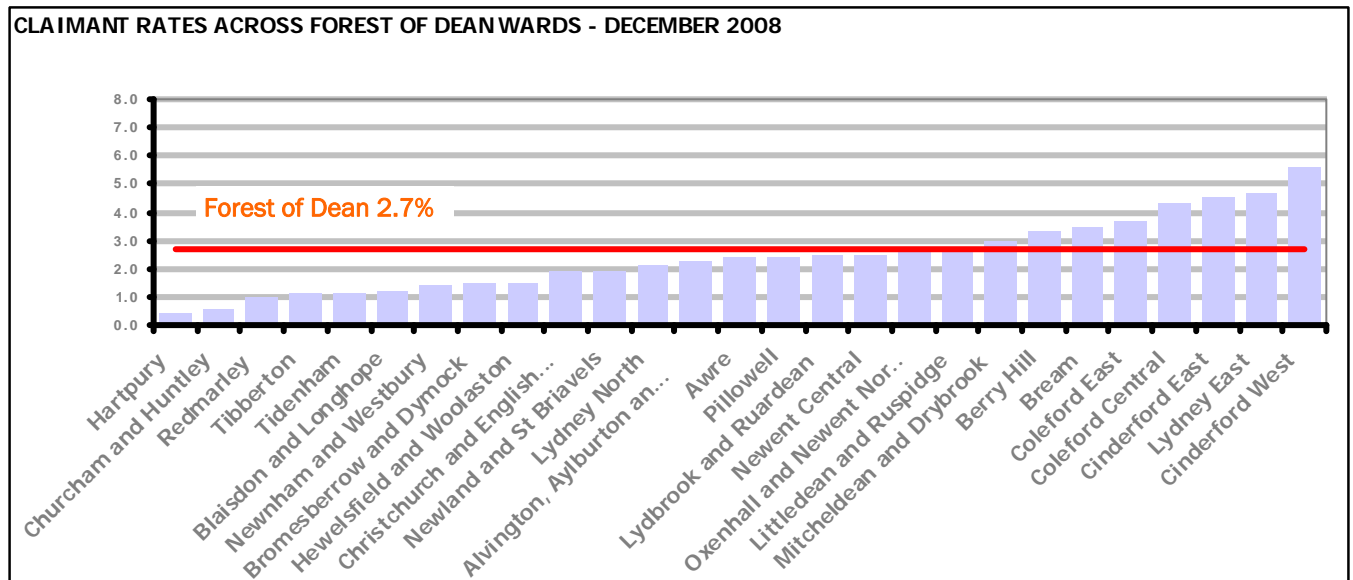
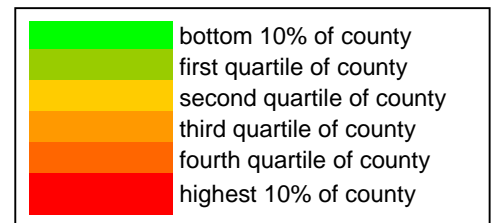


Figure 12 shows the claimant rates for Forest of Dean District wards. The red line represents the average claimant rate across the District. Eight wards are above the District average of 2.7%

Table 5: Analysis of Claimant Count at Forest of Dean District ward level - December 2008

District	Ward	Rate	Rank*
Forest	Hartpury	0.4	1
Forest	Churcham and Huntley	0.6	4
Forest	Redmarley	1.0	14
Forest	Tibberton	1.1	18
Forest	Tidenham	1.1	18
Forest	Blaisdon and Longhope	1.2	28
Forest	Newnham and Westbury	1.4	51
Forest	Bromesberrow and Dymock	1.5	62
Forest	Hewelsfield and Woolaston	1.5	62
Forest	Christchurch and English Bicknor	1.9	79
Forest	Newland and St Briavels	1.9	79
Forest	Lydney North	2.1	89
Forest	Alvington, Ayilburton and West Lydney	2.3	96
Forest	Awre	2.4	97
Forest	Pillowell	2.4	97
Forest	Lydbrook and Ruardean	2.5	100
Forest	Newent Central	2.5	100
Forest	Oxenhall and Newent North East	2.6	103
Forest	Littledean and Ruspidge	2.7	105
Forest	Mitcheldean and Drybrook	3.0	113
Forest	Berry Hill	3.3	117
Forest	Bream	3.5	119
Forest	Coleford East	3.7	122
Forest	Coleford Central	4.3	126
Forest	Cinderford East	4.5	129
Forest	Lydney East	4.7	132
Forest	Cinderford West	5.6	139



* 1 = "best" and 142 = "worst"

Table 5 shows overall claimant rates for the Forest of Dean District wards and their position relative to all wards in Gloucestershire.

PART 4: LOCAL AUTHORITY DISTRICT AND WARD ANALYSIS

4.4 Gloucester City

Claimant Rate and Claimant Count

Figure 13: Gloucester City claimant rate over the last year

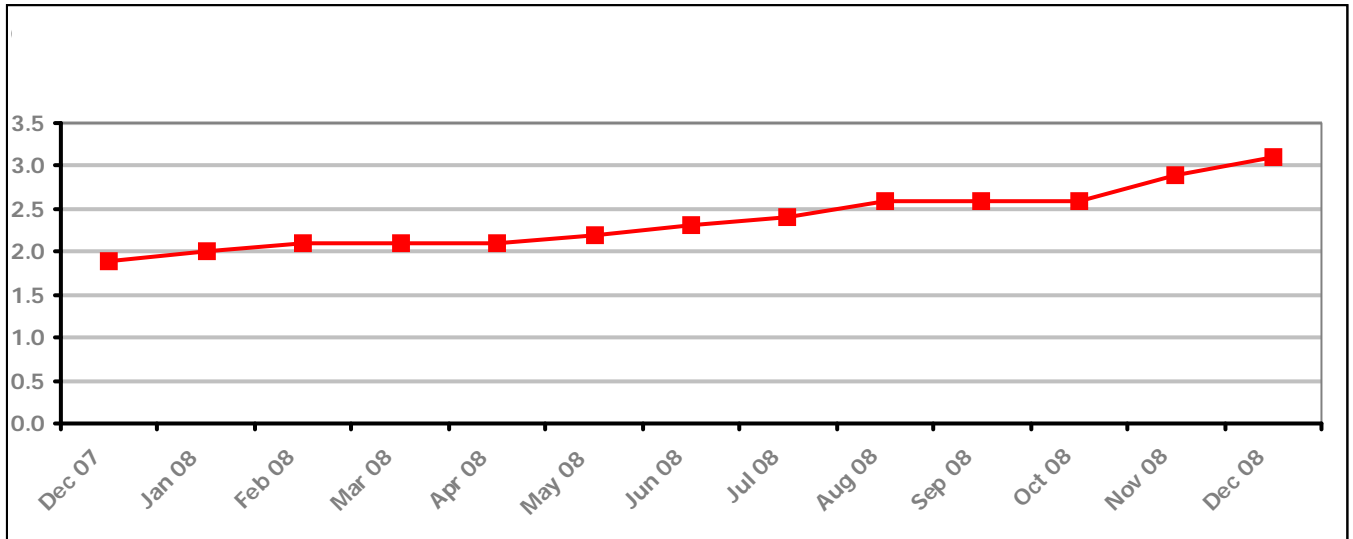


Figure 13 shows the claimant rate for Gloucester City was at the highest point for over a year at 3.1%. The rate has been increasing since May 2008.

Figure 14: Gloucester City claimants - Month on Month and Year on Year change

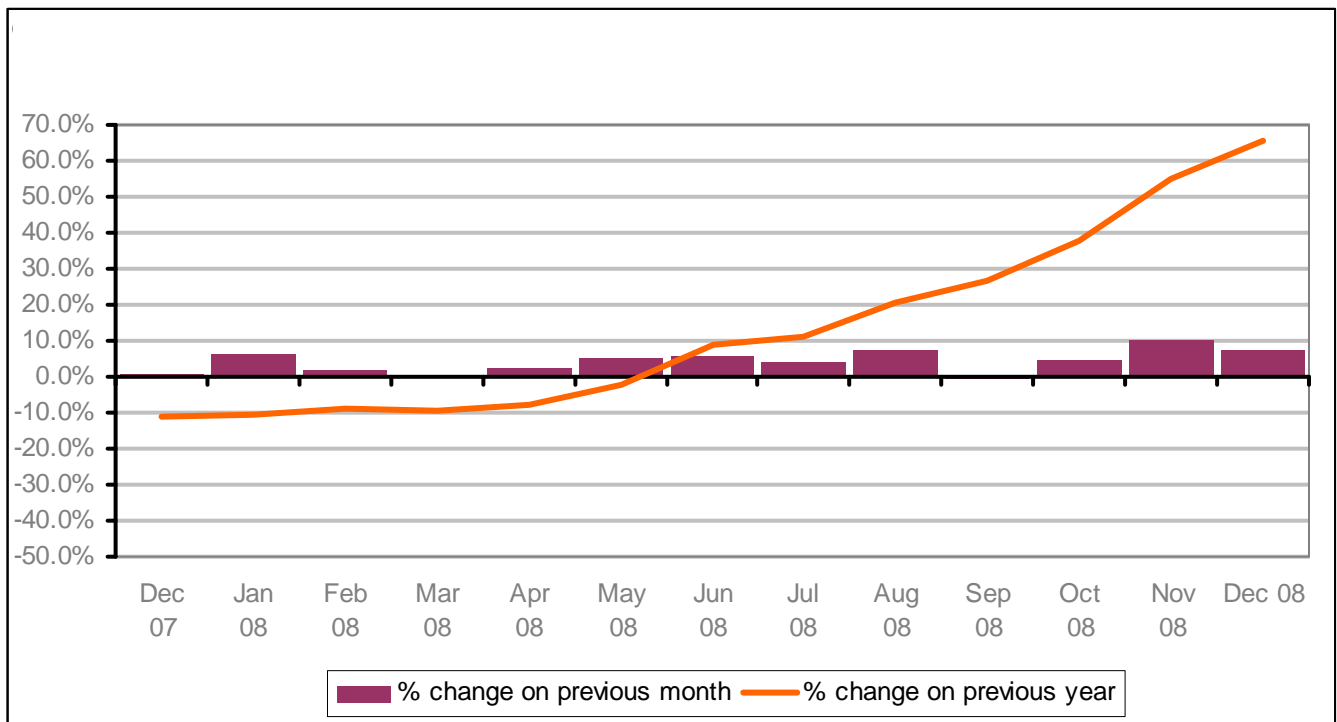


Figure 14 shows the claimant count has increased since April 2008, before falling during September 2008 and then increasing again to November before falling again in December 2008.

PART 4: LOCAL AUTHORITY DISTRICT AND WARD ANALYSIS

4.4 Gloucester City continued...

Figure 15: Claimant rates across Gloucester City wards - December 2008

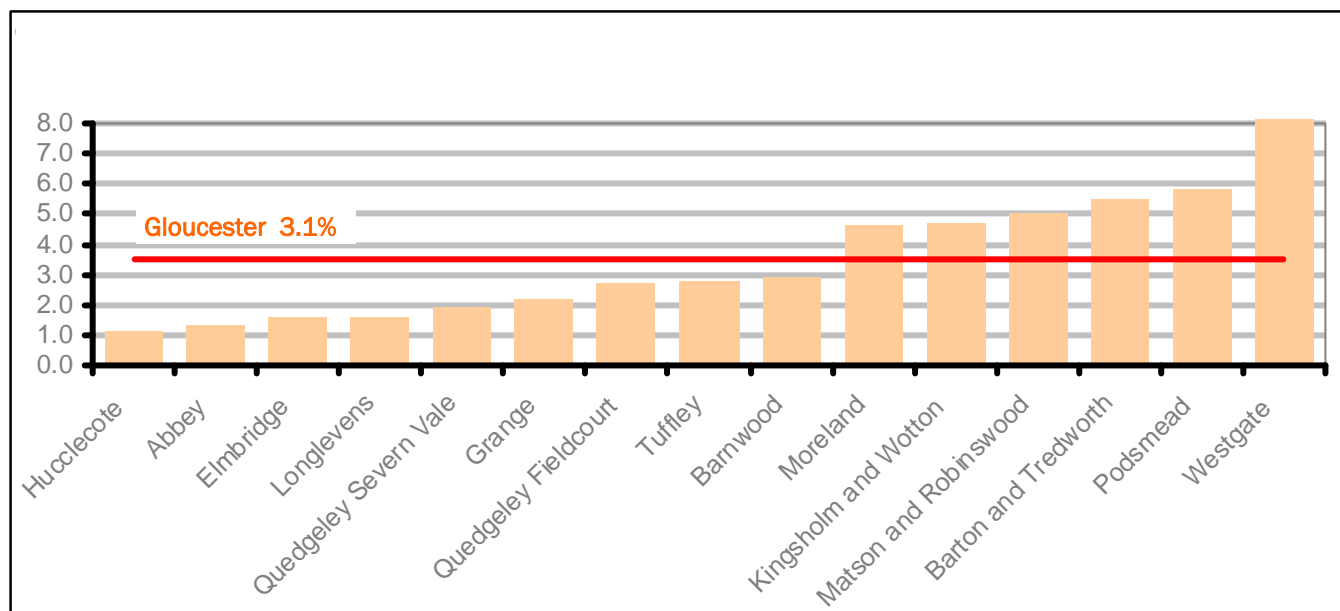
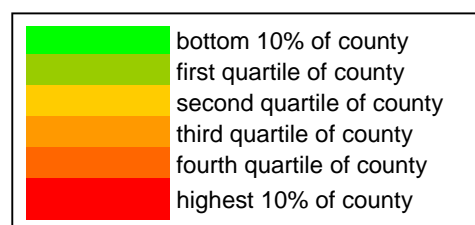


Figure 15 shows the claimant rates for Gloucester City district wards. The red line represents the average claimant rate across the City. Six wards are above the City average of 3.1%

Table 6: Analysis of Claimant Count at Gloucester City ward level - December 2008

District	Ward	Rate	Rank*
Gloucester	Hucclecote	1.1	18
Gloucester	Abbey	1.3	43
Gloucester	Elmbridge	1.6	67
Gloucester	Longlevens	1.6	67
Gloucester	Quedgeley Severn Vale	1.9	79
Gloucester	Grange	2.2	91
Gloucester	Quedgeley Fieldcourt	2.7	105
Gloucester	Tuffley	2.8	107
Gloucester	Barnwood	2.9	111
Gloucester	Moreland	4.6	131
Gloucester	Kingsholm and Wotton	4.7	132
Gloucester	Matson and Robinswood	5.0	136
Gloucester	Barton and Tredworth	5.5	137
Gloucester	Podsmead	5.8	140
Gloucester	Westgate	8.7	142



* 1 = "best" and 142 = "worst"

Table 6 shows overall claimant rates for Gloucester City wards and their position relative to all wards in Gloucestershire.

PART 4: LOCAL AUTHORITY DISTRICT AND WARD ANALYSIS

4.5 Stroud District

Claimant Rate and Claimant Count

Figure 16: Stroud District claimant rate over the last year

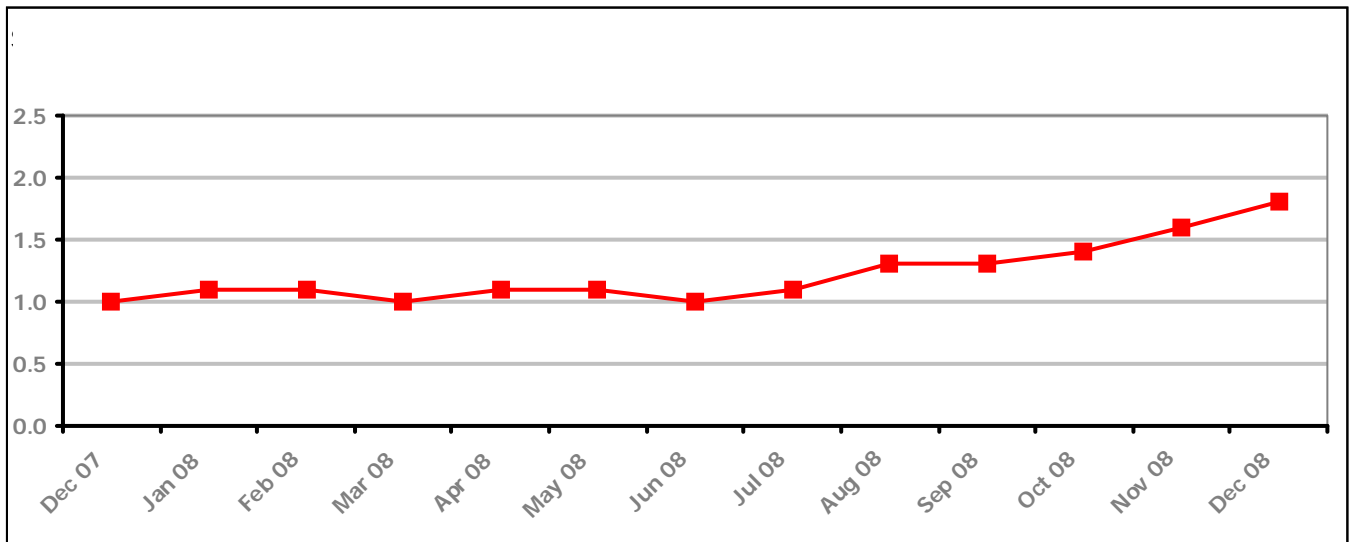


Figure 16 shows the claimant rate for Stroud District was at 1.8% the highest it has been for over two years.

Figure 17: Stroud District claimants - Month on Month and Year on Year change

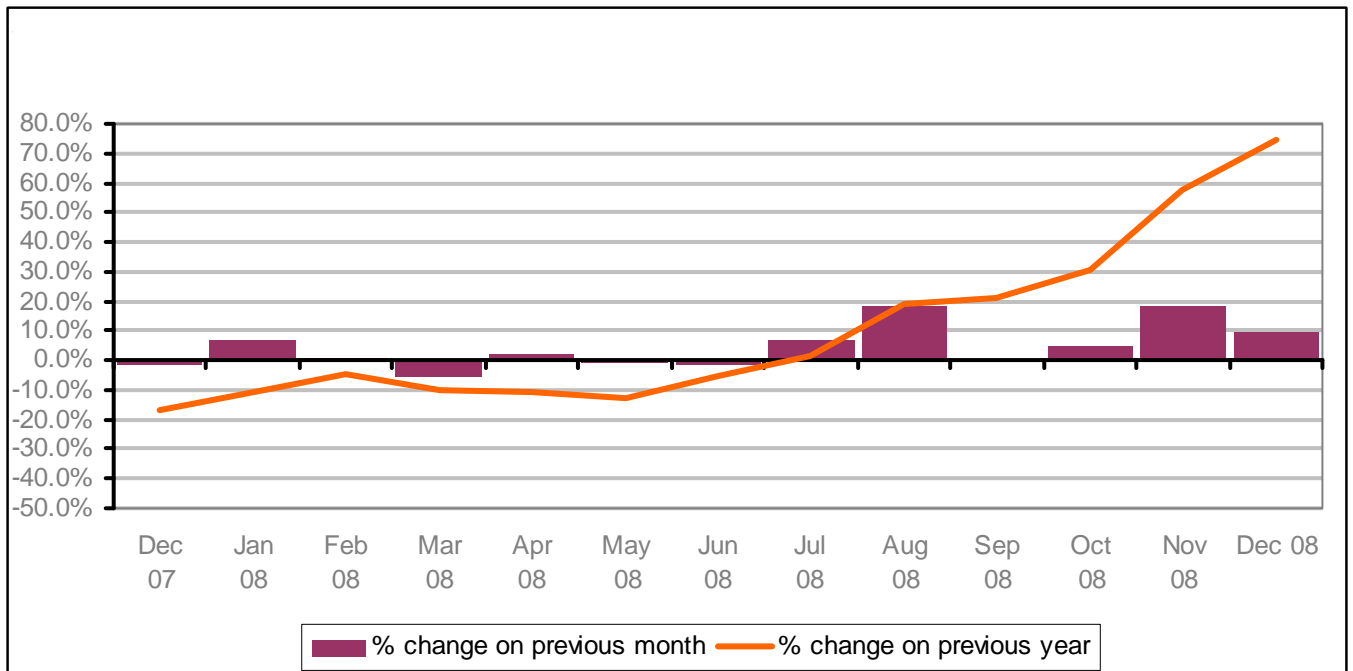


Figure 17 shows that when compared to the same month in the previous year, claimant counts have been increasing since July 2008. The December 2008 figure was 75% higher than it was during December 2007.

PART 4: LOCAL AUTHORITY AND DISTRICT ANALYSIS

4.5 Stroud District continued...

Figure 18: Claimant rates across Stroud District wards - December 2008

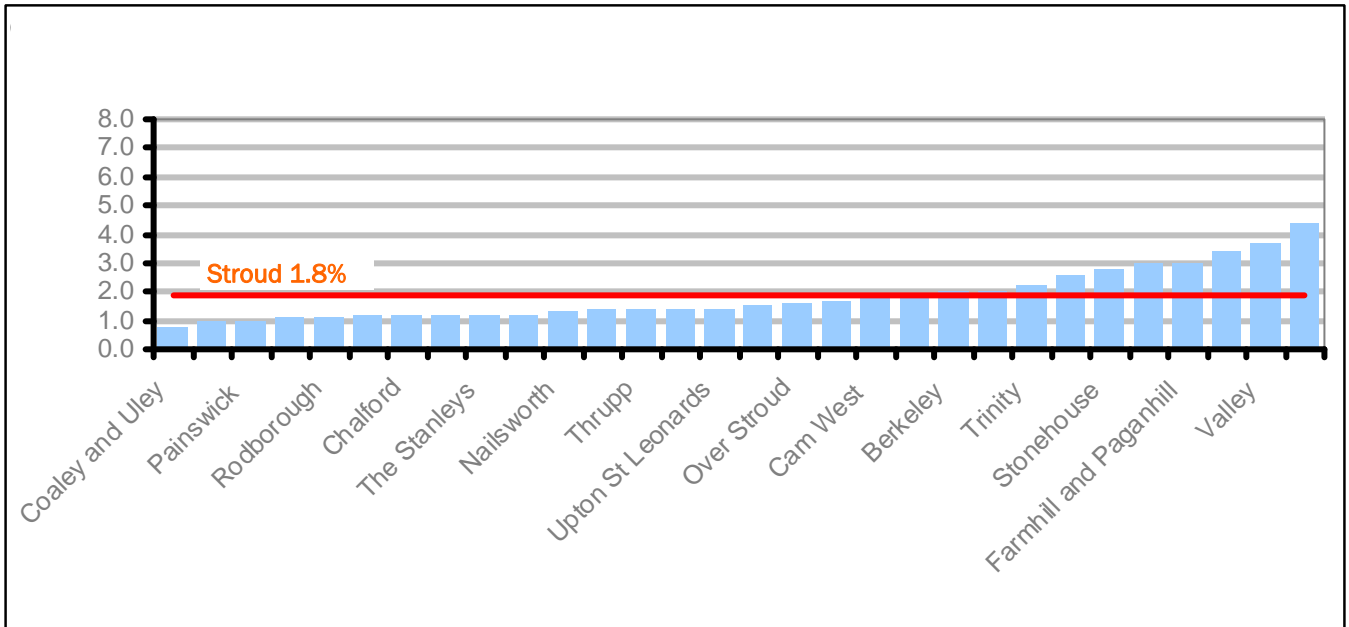
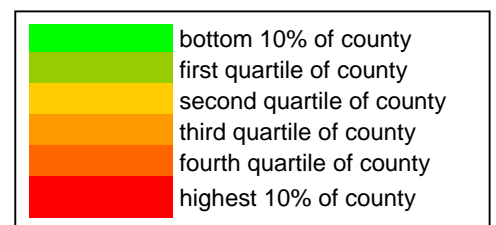


Figure 18 shows the claimant rates in Stroud District wards. The red line represents the average claimant rate across the District and ten of the wards are above the District average of 1.8%.

Table 7: Analysis of Claimant Count at Stroud District ward level - December 2008

District	Ward	Rate	Rank*
Stroud	Coaley and Uley	0.8	8
Stroud	Kingswood	1.0	14
Stroud	Painswick	1.0	14
Stroud	Bisley	1.1	18
Stroud	Rodborough	1.1	18
Stroud	Cam East	1.2	28
Stroud	Chalford	1.2	28
Stroud	Severn	1.2	28
Stroud	The Stanleys	1.2	28
Stroud	Wotton-under-Edge	1.2	28
Stroud	Nailsworth	1.3	43
Stroud	Eastington and Standish	1.4	51
Stroud	Thrupp	1.4	51
Stroud	Uplands	1.4	51
Stroud	Upton St Leonards	1.4	51
Stroud	Vale	1.5	62
Stroud	Over Stroud	1.6	67
Stroud	Amberley and Woodchester	1.7	71
Stroud	Cam West	1.8	74
Stroud	Hardwicke	1.8	74
Stroud	Berkeley	2.0	84
Stroud	Minchinhampton	2.0	84
Stroud	Trinity	2.2	91
Stroud	Dursley	2.6	103
Stroud	Stonehouse	2.8	107
Stroud	Cainscross	3.0	113
Stroud	Farmhill and Paganhill	3.0	113
Stroud	Slade	3.4	118
Stroud	Valley	3.7	122
Stroud	Central	4.4	127



* 1 = "best" and 142 = "worst"

Table 7 shows overall claimant rates for Stroud District wards and their position relative to all wards in Gloucestershire.

PART 4: LOCAL AUTHORITY DISTRICT AND WARD ANALYSIS

4.6 Tewkesbury District

Claimant Rate and Claimant Count

Figure 19: Tewkesbury District claimant rate over the last year

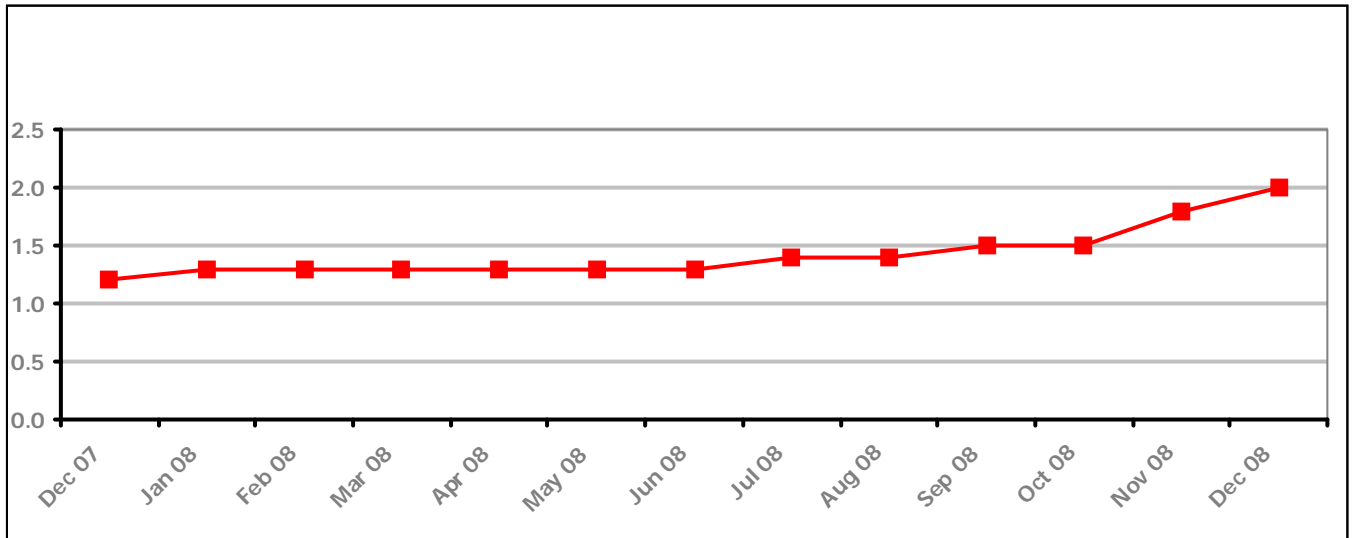


Figure 19 shows the claimant rate for Tewkesbury District was at 2.0% the highest it has been for over a year.

Figure 20: Tewkesbury District claimants - Month on Month and Year on Year change

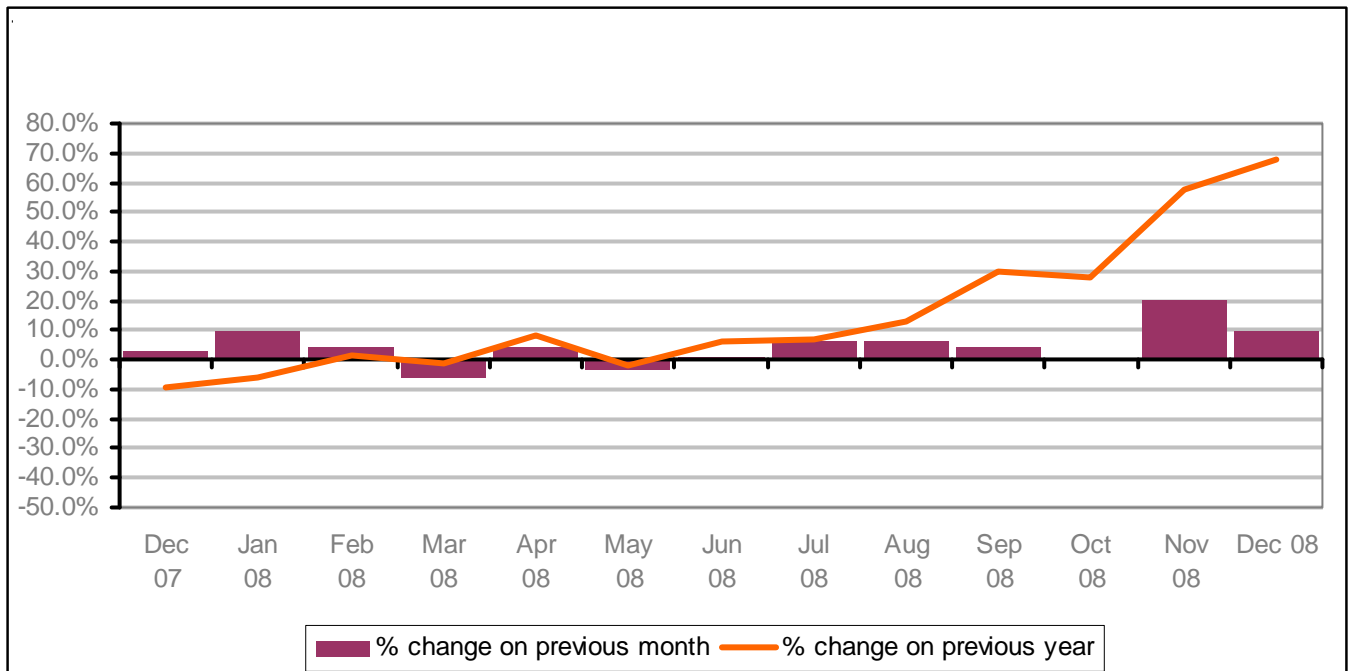


Figure 20 shows that claimant counts have been increasing since June 2008. The rate in December 2008 figure was 68% higher than it was in December 2007.

PART 4: LOCAL AUTHORITY AND DISTRICT ANALYSIS

4.6 Tewkesbury District continued...

Figure 21: Claimant rates across Tewkesbury District wards - December 2008

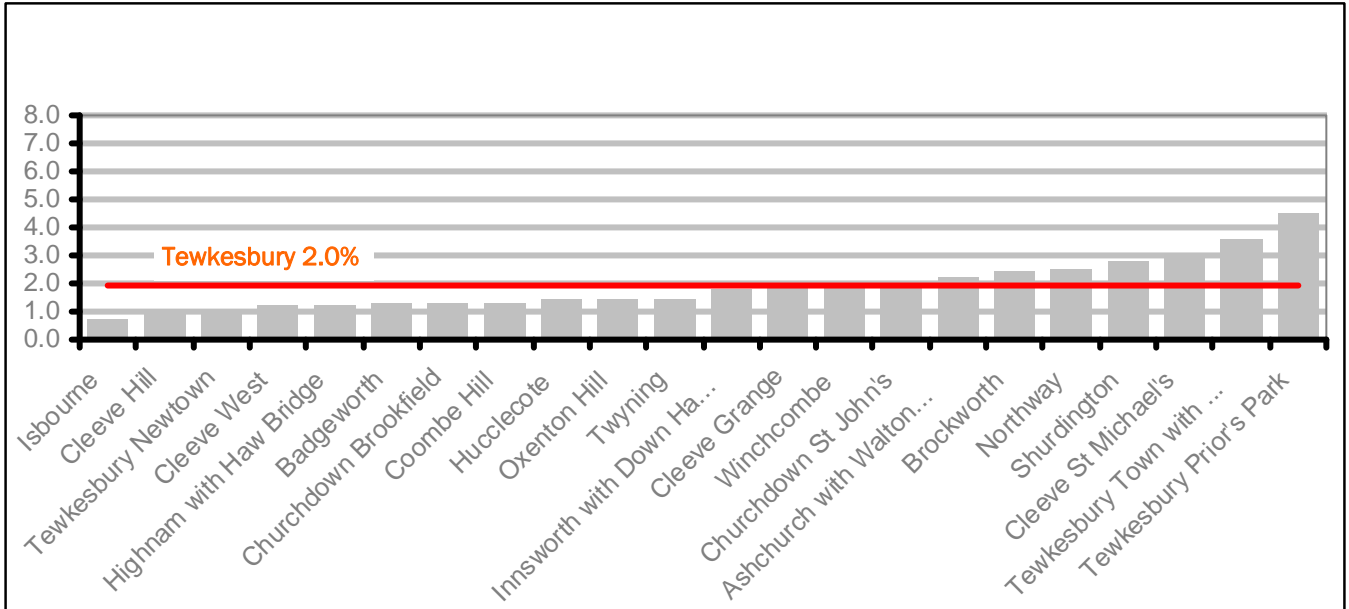
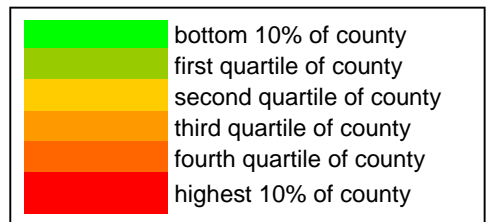


Figure 21 shows the claimant rates in Tewkesbury District wards. The red line represents the average claimant rate across the District and nine of the wards are above the District average of 2.0%.

Table 8: Analysis of Claimant Count at Tewkesbury District level - December 2008

District	Ward	Rate	Rank*
Tewkesbury	Isbourne	0.7	7
Tewkesbury	Cleeve Hill	1.0	14
Tewkesbury	Tewkesbury Newtown	1.1	18
Tewkesbury	Cleeve West	1.2	28
Tewkesbury	Highnam with Haw Bridge	1.2	28
Tewkesbury	Badgeworth	1.3	43
Tewkesbury	Churchdown Brookfield	1.3	43
Tewkesbury	Coombe Hill	1.3	43
Tewkesbury	Hucclecote	1.4	51
Tewkesbury	Oxenton Hill	1.4	51
Tewkesbury	Twyning	1.4	51
Tewkesbury	Innsworth with Down Hatherley	1.8	74
Tewkesbury	Cleeve Grange	1.9	79
Tewkesbury	Winchcombe	2.0	84
Tewkesbury	Churchdown St John's	2.1	89
Tewkesbury	Ashchurch with Walton Cardiff	2.2	91
Tewkesbury	Brockworth	2.4	97
Tewkesbury	Northway	2.5	100
Tewkesbury	Shurdington	2.8	107
Tewkesbury	Cleeve St Michael's	2.9	111
Tewkesbury	Tewkesbury Town with Mitton	3.6	120
Tewkesbury	Tewkesbury Prior's Park	4.5	129



* 1 = "best" and 142 = "worst"

Table 8 shows overall claimant rates for Tewkesbury District wards and their position relative to all wards in Gloucestershire.

PART 5: YOUNG PEOPLE NOT IN EDUCATION, EMPLOYMENT OR TRAINING (NEET) IN GLOUCESTERSHIRE

Data provided by the government organisation Connexions on the situation of young people (16-18) in Gloucestershire who are not in education, employment or formal training.

Connexions Gloucestershire is required to report performance with the 16-18 age range against nationally defined criteria for counting the NEET group. The NEET group includes young people actively seeking education, employment or training as well as those young people who are either not yet ready or who are unable to access these opportunities because of their personal circumstances. The figures quoted below include young people in both of these categories.

SUMMARY

As at the end of December 2008 there were 687 young people aged 16-18 not in education, employment or training in Gloucestershire. This figure translates into an adjusted (*) 16-18 NEET population of 3.9%. This has remained in line with the strong performance of 3.9% at the end of November 2008 and, given the current economic climate, is very positive and results from continual tracking and enhanced support for young people from staff within Connexions.

Total NEET Group by District Area 31 December 2008

	Cheltenham	Cotswold	Forest	Gloucester	Stroud	Tewkesbury	Total
NEET Group	149	55	103	198	114	68	687(*)
% NEET of total 16-18 cohort	5.6%	2.1%	3.6%	3.6%	3.6%	3.2%	3.9%(*)

Early evidence of the impact of the economic recession on young people;

Whilst to date NEET performance has remained positive, our updated position for January 2009 looks more challenging. We are also witnessing the needs of the NEET group changing as a result of the recession and further analysis of this group has highlighted the following findings;

- There are now approx 100 young people in the NEET group who hold a level two (or above) qualification and Connexions is working closely with the LSC to ensure that NEET provision meet the needs of these young people
- We have evidenced a 15% reduction in the numbers of 16-18 yr olds in employment opportunities when comparing Nov 2007 with Nov 2008
- 150 young people aged 16-18 yrs joined the NEET register during December with approx 35% of these joining from an employment option
- 40% of the NEET group are also part of our recognised vulnerable groups (including young offenders, teenage mothers and care leavers)
- A 300% increase in the numbers of enquiries to the vacancy section of our website

If you would like to receive any further information on Gloucestershire's NEET strategy then please contact Andrew.Webster@prospects.co.uk or telephone 01452 426900

(*) Adjustment includes a proportion of young people aged 16-18 whose outcomes are not-known to Connexions Gloucestershire