

Contents

Part 1: Summary

A summary of unemployment data at district, County, regional and national level

1

Part 2: County

Unemployment figures for the County compared to the South West and the rest of the UK

3

Part 3: Districts

A comparative break down of unemployment figures by district

4

Part 4: Wards

Further breakdown of unemployment figures by ward:

Cheltenham

6

Cotswolds

8

Forest of Dean

10

Gloucester

12

Stroud

14

Tewkesbury

16

Part 5: Map

Distribution of claimant rate across Gloucestershire

18

Part 6: Young People

Data about Young People Not in Education, Employment or Training (NEET)

20

Produced by:

The Research Team (Economics)
Chief Executive Support Unit
Gloucestershire County Council
September 2009

INTRODUCTION

The Unemployment Bulletin provides a monthly update on unemployment data for Gloucestershire, the South West region and the United Kingdom. It is produced by the Economic section of the County Council Chief Executive's Support Unit Research Team. The data is sourced from the Office for National Statistics via Nomis (www.nomis.co.uk).

The claimant count measures the number of people claiming unemployment-related benefit (currently Job Seeker's allowance). The claimant rate is the number of claimants as a proportion of the working age population.

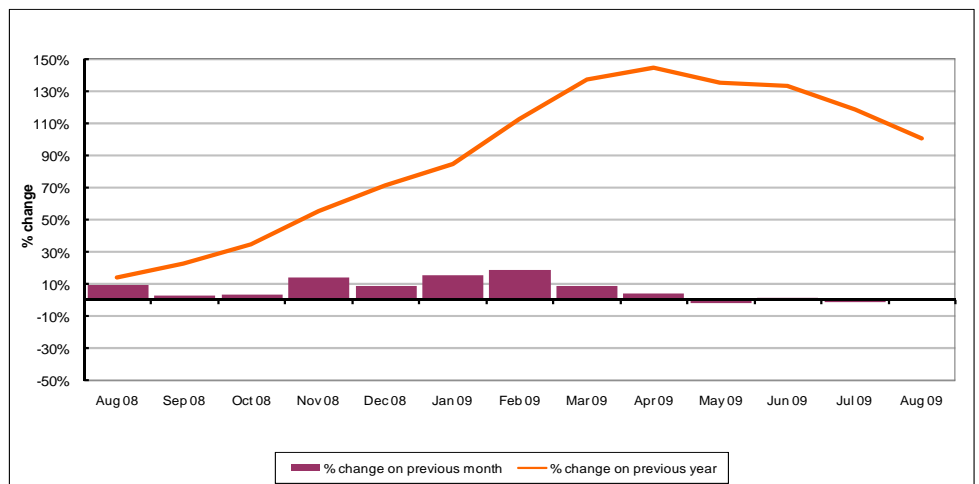
PART 1: SUMMARY

The claimant rate in Gloucestershire was 3.6% in August 2009. This was an increase of 0.1% on the July 2009 figure. The rate has increased from last month. The UK and South West rate remained the same as last month at 4.2% and 3.0% respectively. Gloucestershire's rate remains above the South West average of 3.0%, but 0.6% lower than the UK average of 4.2%.

The claimant count in Gloucestershire in August 2009 increased by 86 people. The amount of people claiming in August 2009 was 0.7% higher than the number in July 2009 compared to a 0.4% increase in the South West and a 1.8% increase for the UK.

The claimant count in Gloucestershire has increased. The count was 100% higher in August 2009 than at the same point in the previous year as shown in the graph below.

Gloucestershire claimants - Month on Month and Year on Year change: August 2008 to August 2009



Source: ONS Crown Copyright Reserved

DISTRICTS AT A GLANCE

At a glance unemployment information grouped by district. Includes:

Claim count: Total number of people claiming Job Seekers Allowance in August 2009

Compared to last month: How much larger/smaller August's claim count is compared to June, expressed as a %

Claimant rate: The % of working population claiming Job Seekers Allowance in August 2009

Highest claiming ward: The ward with the highest claim count in that district and the rate

CHELTENHAM BOROUGH

Claim count:	2,975
Compared to last month:	+3.2%
Claimant rate:	4.2%
Highest claiming ward	Hesters Way (9.6%)

GLOUCESTER CITY

Claim count:	3,286
Compared to last month:	- 0.6%
Claimant rate:	4.6%
Highest claiming ward	Westgate (8.9%)

COTSWOLD DISTRICT

Claim count:	1,068
Compared to last month:	+ 2.7%
Claimant rate:	2.2%
Highest claiming ward	Cirencester Watermoor (4.8%)

STROUD DISTRICT

Claim count:	2,059
Compared to last month:	+1.1%
Claimant rate:	3.1%
Highest claiming ward	Central (7.5%)

FOREST OF DEAN

Claim count:	1,711
Compared to last month:	- 1.4%
Claimant rate:	3.5%
Highest claiming ward	Cinderford West (5.7%)

TEWKESBURY BOROUGH

Claim count:	1,440
Compared to last month:	- 0.8%
Claimant rate:	3.1%
Highest claiming ward	Tewkesbury Priors Park (5.8%)

YOUNG PEOPLE NOT IN EDUCATION, EMPLOYMENT OR TRAINING (NEET)

As at the end of August 2009 there were 658 young people aged 16-18 not in education, employment or training in Gloucestershire and this figure translates into an adjusted (*) 16-18 NEET population of 4.9%.

PART 2: UK, SW AND GLOUCESTERSHIRE INDICATORS

The unemployment situation in Gloucestershire compared to the South West and the UK.

Claimant Rate

Figure 1: Claimant Rate for Gloucestershire, the South West and UK over the past year

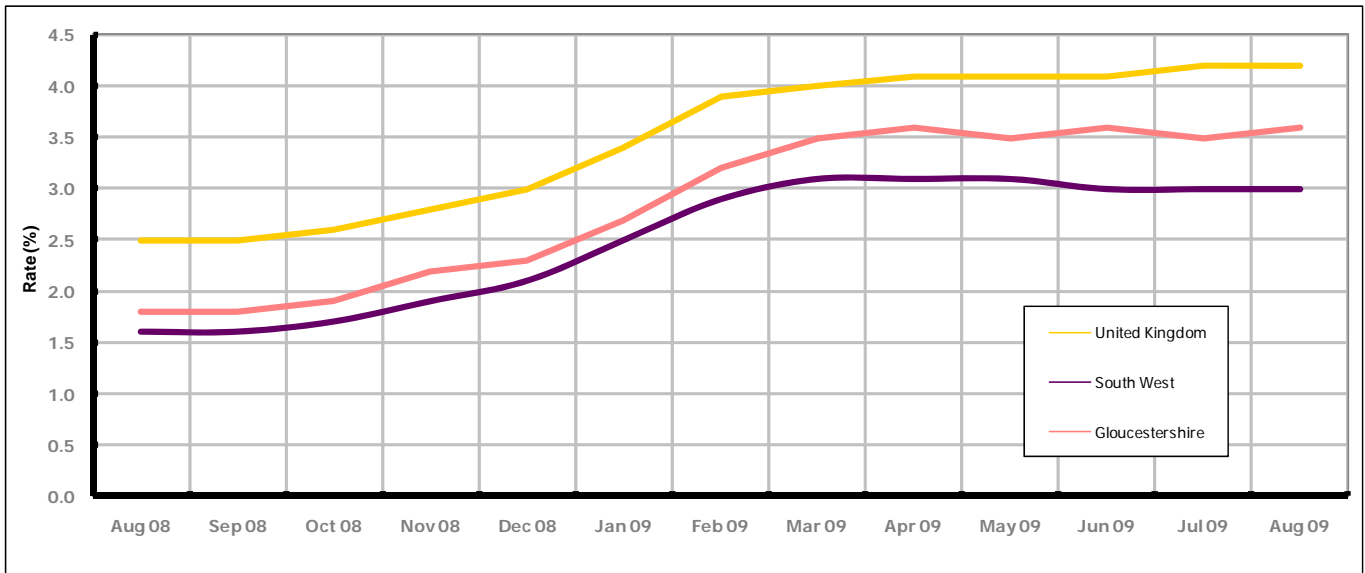


Figure 1 shows the claimant rate for Gloucestershire at 3.6% in August 2009. The rate has remained slightly higher than the South West average over the past year, but persistently lower by approximately 0.6% against the UK average during the same period. August 2009 represented a 0.1% decrease on July 2009.

Claimant Count

Table 1: Analysis of UK, South West and Gloucestershire Claimant Counts

Area	Claimant Count in August 2009	% change on July 2009	Average % increase over the last six months	Consecutive months increasing
UK	1,602,189	+1.8%	+0.8%	2
South West	94,712	+0.4%	-0.2%	1
Gloucestershire	12,539	+0.7%	+0.4%	1

Table 1 shows that in August 2009, the number of claimants in Gloucestershire was 0.7% higher than the number in July 2009.

The average growth in claimants in Gloucestershire for the six months to August 2009 was 0.4%. This is 0.4% lower than the UK average and 0.6% higher than the South West region.

PART 3: LOCAL AUTHORITY DISTRICT ANALYSIS

Claimant Rate and Claimant Count

Figure 2: Claimant Rate (%) across Gloucestershire - August 2009

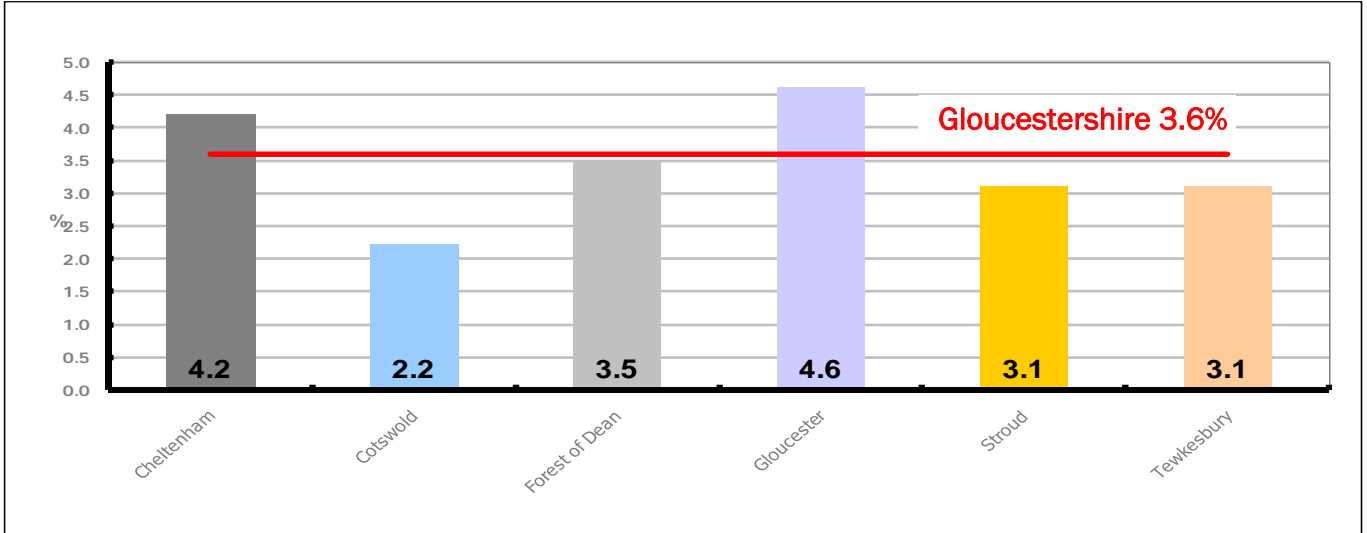


Figure 2 shows the claimant rate for August 2009 in Gloucestershire. Between July 2009 and August 2009, Cheltenham and Cotswold experienced an increase while Forest of Dean underwent a decrease and Gloucester, Stroud and Tewkesbury districts remained the same.

Figure 3: Total claimants over the past year across Gloucestershire Districts

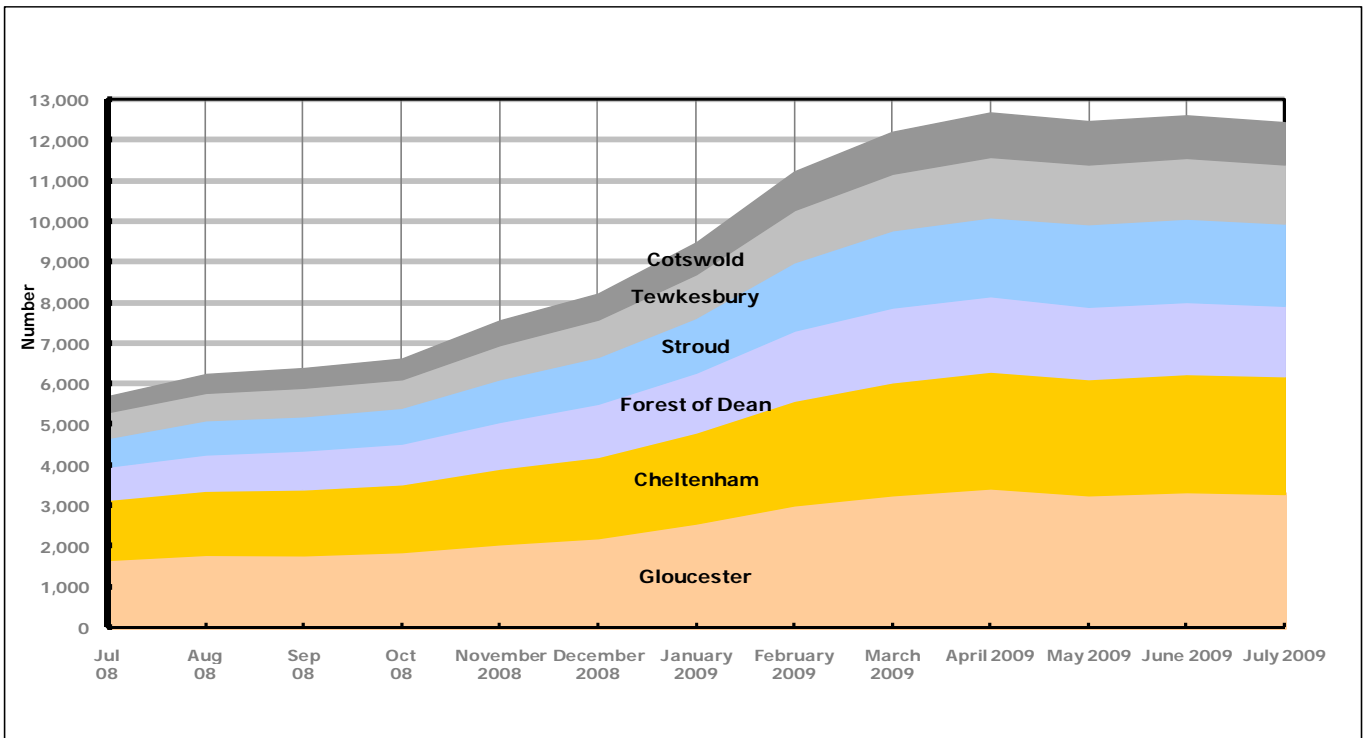


Figure 3 shows the overall claimant count by district for Gloucestershire over the past year. It demonstrates a noticeable levelling off since April 2009.

Table 2: Analysis of Gloucestershire and District Claimant Counts

Total	August 09 Number	August 09 Rate	July 09 Number	July 09 Rate	Monthly change	% monthly change	Monthly change of rate
Gloucestershire	12,539	3.6	12,453	3.5	86	0.7%	0.1
Cheltenham	2,975	4.2	2,883	4.1	92	3.2%	0.1
Cotswold	1,068	2.2	1,040	2.1	28	2.7%	0.1
Forest of Dean	1,711	3.5	1,736	3.6	-25	-1.4%	-0.1
Gloucester	3,286	4.6	3,305	4.6	-19	-0.6%	0.0
Stroud	2,059	3.1	2,037	3.1	22	1.1%	0.0
Tewkesbury	1,440	3.1	1,452	3.1	-12	-0.8%	0.0

Table 2 shows the change in the claimant count in August 2009 compared to July 2009. Cheltenham, Cotswold and Stroud districts experienced an increase and Forest of Dean, Gloucester and Tewkesbury districts showed a decrease.

Table 3: Analysis of Male Gloucestershire and District Claimant Counts

Male	August 09 Number	August 09 Rate	July 09 Number	July 09 Rate	Monthly change	% monthly change	Monthly change of rate
Gloucestershire	9,163	5.0	9,217	5.0	-54	-0.6%	0.0
Cheltenham	2,187	5.9	2,143	5.8	44	2.1%	0.1
Cotswold	775	3.0	750	2.9	25	3.3%	0.1
Forest of Dean	1,237	4.8	1,269	4.9	-32	-2.5%	-0.1
Gloucester	2,468	6.7	2,511	6.8	-43	-1.7%	-0.1
Stroud	1,492	4.3	1,494	4.3	-2	-0.1%	0.0
Tewkesbury	1,004	4.1	1,050	4.3	-46	-4.4%	-0.2

Table 3 shows the change in the male claimant count in August 2009 compared to July 2009. Cheltenham and Cotswold districts experienced an increase while the other four districts underwent a decrease.

Table 4: Analysis of Female Gloucestershire and District Claimant Counts

Female	August 09 Number	August 09 Rate	July 09 Number	July 09 Rate	Monthly change	% monthly change	Monthly change of rate
Gloucestershire	3,376	2.0	3,236	1.9	140	4.3%	0.1
Cheltenham	788	2.4	740	2.2	48	6.5%	0.2
Cotswold	293	1.3	290	1.3	3	1.0%	0.0
Forest of Dean	474	2.1	467	2.0	7	1.5%	0.1
Gloucester	818	2.4	794	2.3	24	3.0%	0.1
Stroud	567	1.8	543	1.8	24	4.4%	0.0
Tewkesbury	436	1.9	402	1.8	34	8.5%	0.1

Table 4 shows the change in the female claimant count in August 2009 compared to July 2009. All the districts experienced an increase.

PART 4: LOCAL AUTHORITY DISTRICT AND WARD ANALYSIS

This section covers the six districts and a comparison of their constituent wards.

4.1 Cheltenham Borough

Claimant Rate and Claimant Count

Figure 4: Cheltenham Borough claimant rate over the last year

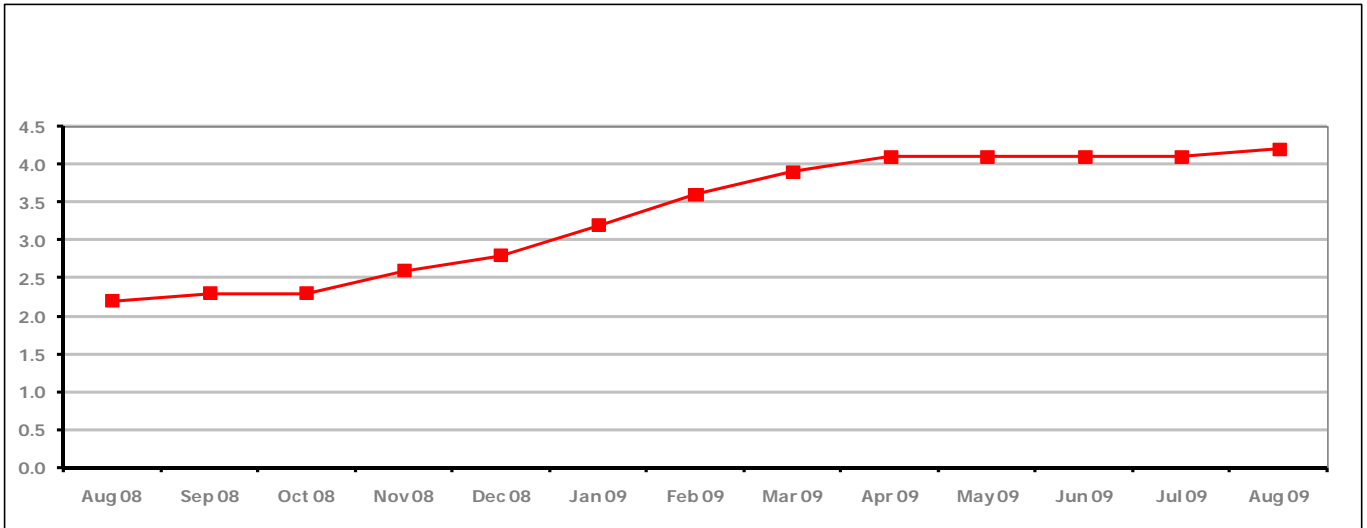


Figure 4 shows the claimant rate in Cheltenham increased by 0.1% since last month to 4.2%. This is the first increase in four months.

Figure 5: Cheltenham Borough claimants - Month on Month and Year on Year change

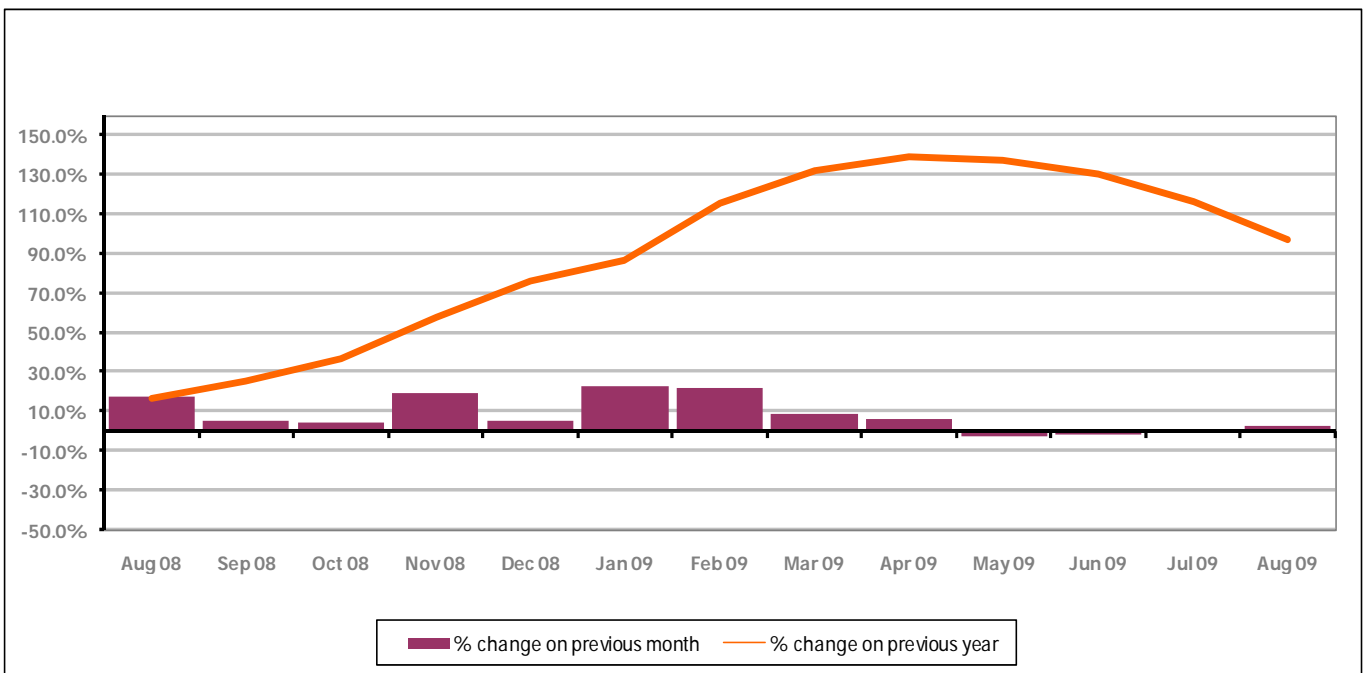


Figure 5 shows the claimant count increased by 3.2% since last month, a reverse of the trend shown over the last three months. In addition, the change on the previous year has gone down in August 2009 compared to July 2009 to 91%.

PART 4: LOCAL AUTHORITY DISTRICT AND WARD ANALYSIS

4.1 Cheltenham Borough continued...

Figure 6: Claimant rates across Cheltenham Borough wards - August 2009

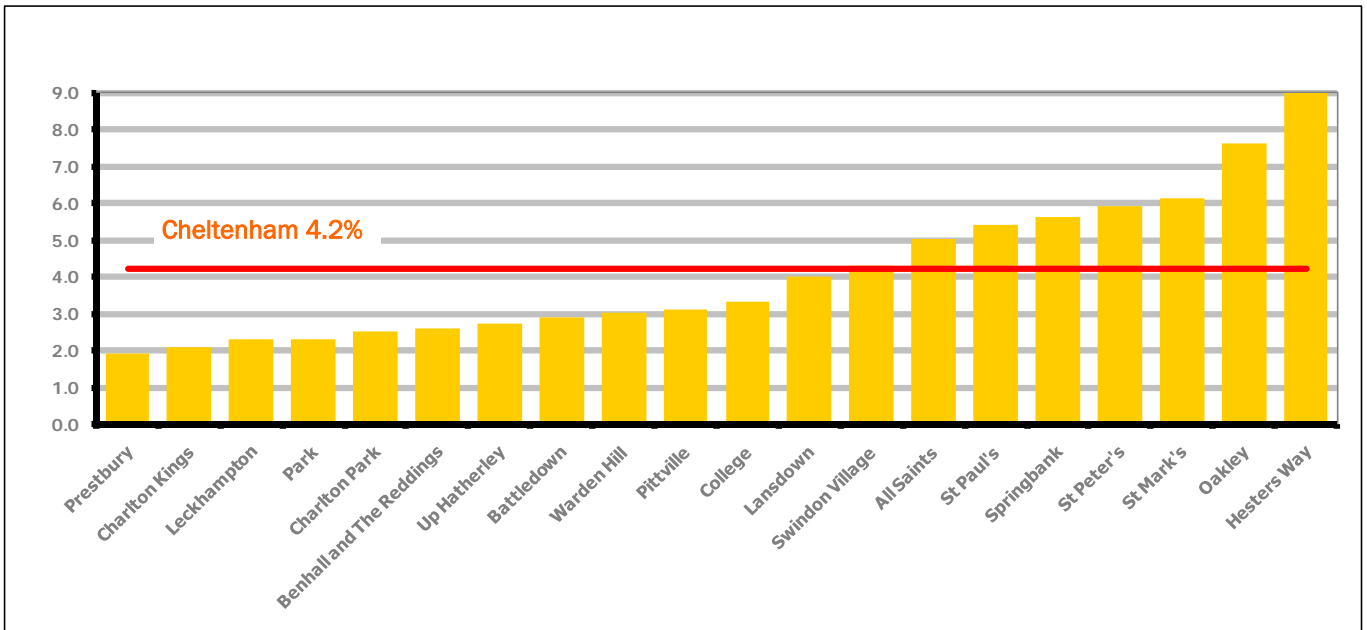


Figure 6 shows the claimant rates for Cheltenham Borough wards. The red line represents the average claimant rate across the Borough of 4.2%. Eight wards lie above the average.

Table 5: Analysis of Claimant Count at Cheltenham Borough ward level - August 2009

District	Ward	Rate	Rank*
Cheltenham	Prestbury	1.9	24
Cheltenham	Charlton Kings	2.1	38
Cheltenham	Leckhampton	2.3	45
Cheltenham	Park	2.3	45
Cheltenham	Charlton Park	2.5	55
Cheltenham	Benhall and The Reddings	2.6	64
Cheltenham	Up Hatherley	2.7	68
Cheltenham	Battledown	2.9	77
Cheltenham	Warden Hill	3.0	82
Cheltenham	Pittville	3.1	86
Cheltenham	College	3.3	91
Cheltenham	Lansdown	4.0	107
Cheltenham	Swindon Village	4.3	113
Cheltenham	All Saints	5.0	121
Cheltenham	St Paul's	5.4	125
Cheltenham	Springbank	5.6	129
Cheltenham	St Peter's	5.9	133
Cheltenham	St Mark's	6.1	134
Cheltenham	Oakley	7.6	139
Cheltenham	Hesters Way	9.6	142

	bottom 10% of county
	first quartile of county
	second quartile of county
	third quartile of county
	fourth quartile of county
	highest 10% of county

* 1 = "best" and 142 = "worst"

Table 5 shows overall claimant rates for Cheltenham Borough wards and their position relative to all wards in Gloucestershire.

PART 4: LOCAL AUTHORITY DISTRICT AND WARD ANALYSIS

4.2 Cotswold District

Claimant Rate and Claimant Count

Figure 7: Cotswold District claimant rate over the last year

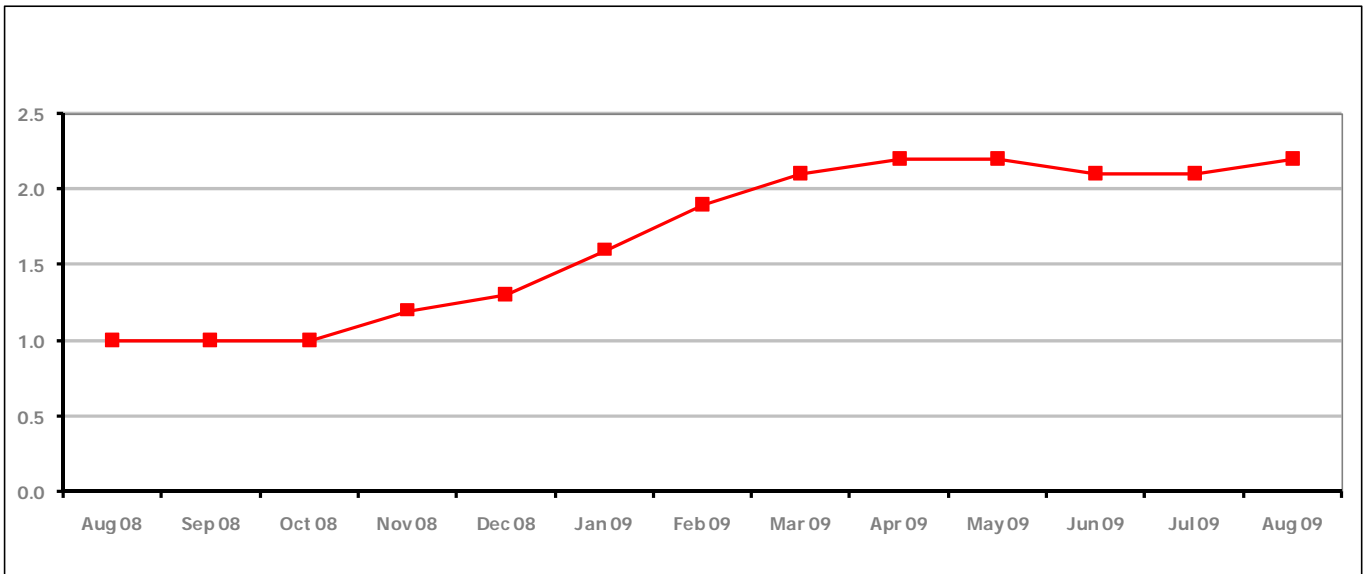


Figure 7 shows the claimant rate in Cotswold District increased in August 2009 to 2.2%. The rate had been lower for the last two months.

Figure 8: Cotswold District claimants - Month on Month and Year on Year change

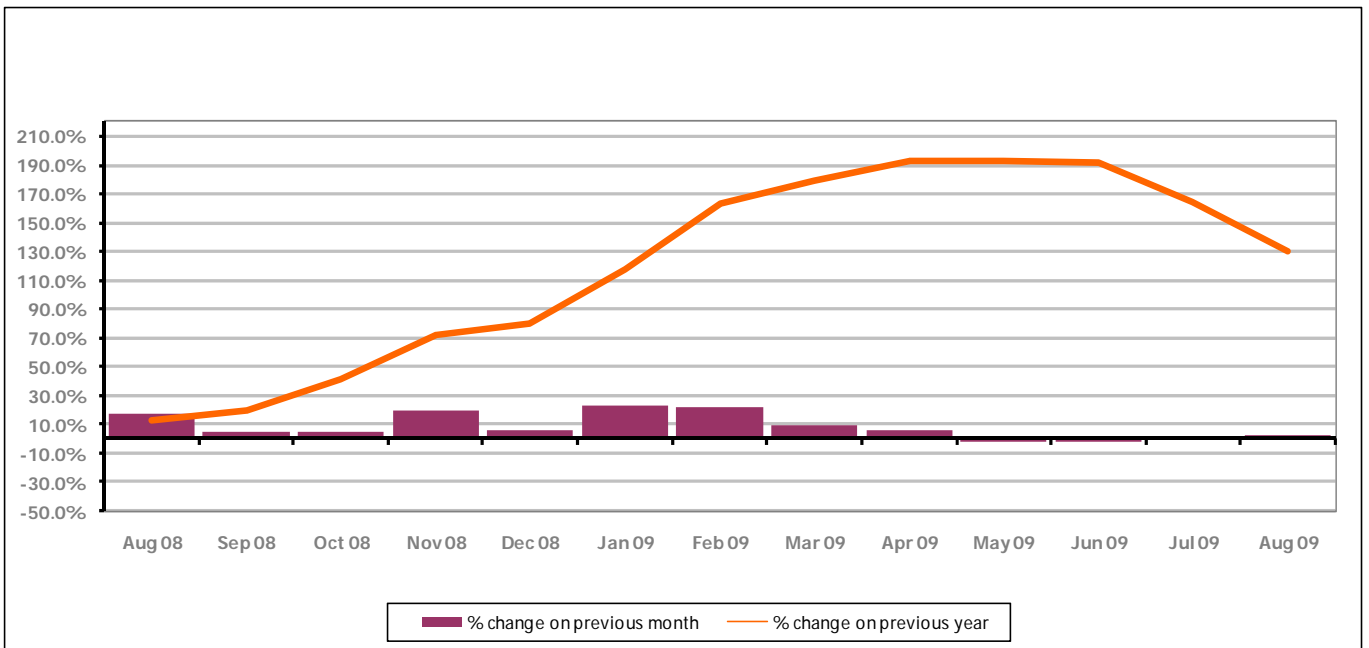


Figure 8 shows the claimant count increased by 2.7% since July 2009 after a decline experienced in the last three months. The change on the previous year although still an increase is less than the previous month at 130%.

PART 4: LOCAL AUTHORITY DISTRICT AND WARD ANALYSIS

4.2 Cotswold District continued...

Figure 9: Claimant rates across Cotswold District wards - August 2009

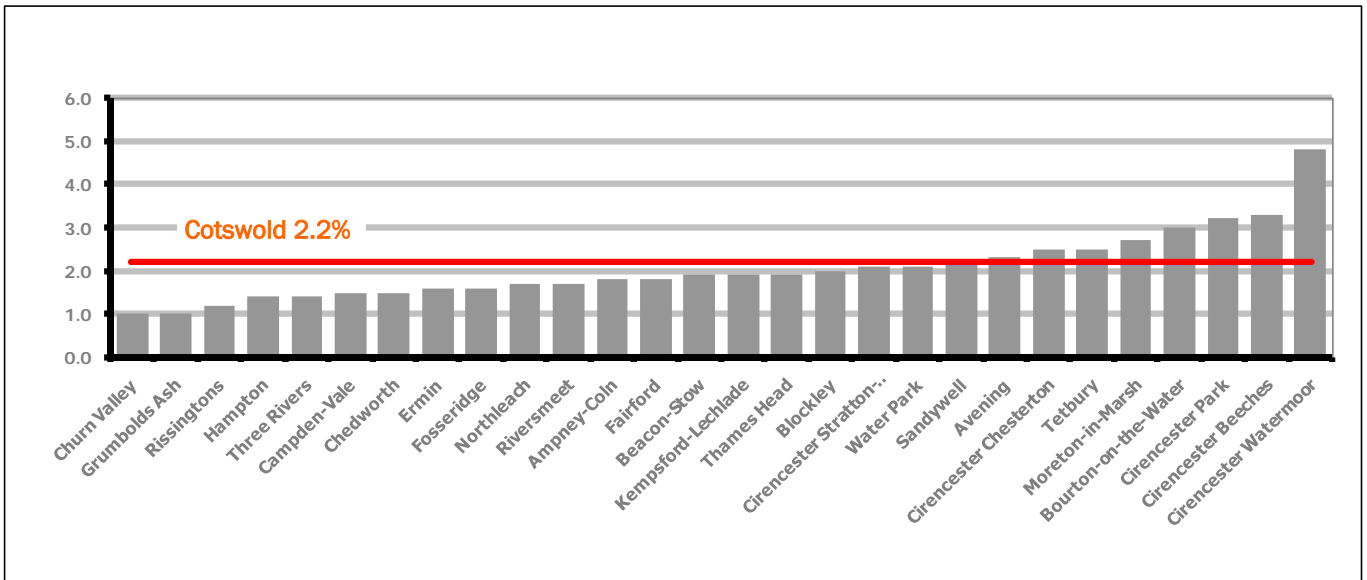
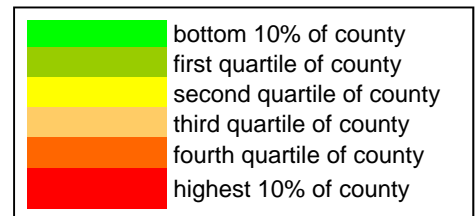


Figure 9 shows the claimant rates for Cotswold District wards. The red line represents the average claimant rate across the District of 2.2%. Eight wards lie above the average.

Table 6: Analysis of Claimant Count at Cotswold District ward level - August 2009

District	Ward	Rate	Rank*
Cotswolds	Churn Valley	1.0	2
Cotswolds	Grumbolds Ash	1.0	2
Cotswolds	Rissingtons	1.2	5
Cotswolds	Hampton	1.4	7
Cotswolds	Three Rivers	1.4	7
Cotswolds	Campden-Vale	1.5	10
Cotswolds	Chedworth	1.5	10
Cotswolds	Ermin	1.6	14
Cotswolds	Fosseridge	1.6	14
Cotswolds	Northleach	1.7	18
Cotswolds	Riversmeet	1.7	18
Cotswolds	Ampney-Coln	1.8	21
Cotswolds	Fairford	1.8	21
Cotswolds	Beacon-Stow	1.9	24
Cotswolds	Kempsford-Lechlade	1.9	24
Cotswolds	Thames Head	1.9	24
Cotswolds	Blockley	2.0	34
Cotswolds	Cirencester Stratton-Whiteway	2.1	38
Cotswolds	Water Park	2.1	38
Cotswolds	Sandywell	2.2	41
Cotswolds	Avening	2.3	45
Cotswolds	Cirencester Chesterton	2.5	55
Cotswolds	Tetbury	2.5	55
Cotswolds	Moreton-in-Marsh	2.7	68
Cotswolds	Bourton-on-the-Water	3.0	82
Cotswolds	Cirencester Park	3.2	87
Cotswolds	Cirencester Beeches	3.3	91
Cotswolds	Cirencester Watermoor	4.8	119



* 1 = "best" and 142 = "worst"

Table 6 shows overall claimant rates for Cotswold District wards and their position relative to all wards in Gloucestershire.

PART 4: LOCAL AUTHORITY DISTRICT AND WARD ANALYSIS

4.3 Forest of Dean District

Claimant Rate and Claimant Count

Figure 10: Forest of Dean District claimant rate over the last year

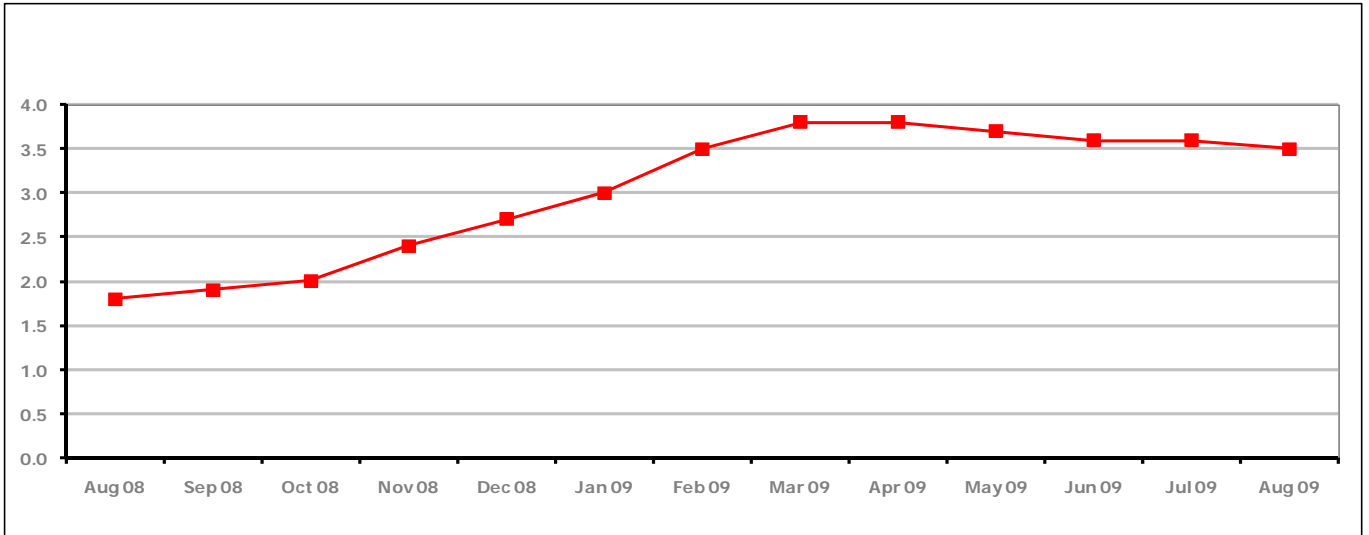


Figure 10 shows the claimant rate in the Forest of Dean in August 2009 amounting to 3.5% is continuing the downward trend shown since April 2009.

Figure 11: Forest of Dean District claimants - Month on Month and Year on Year change

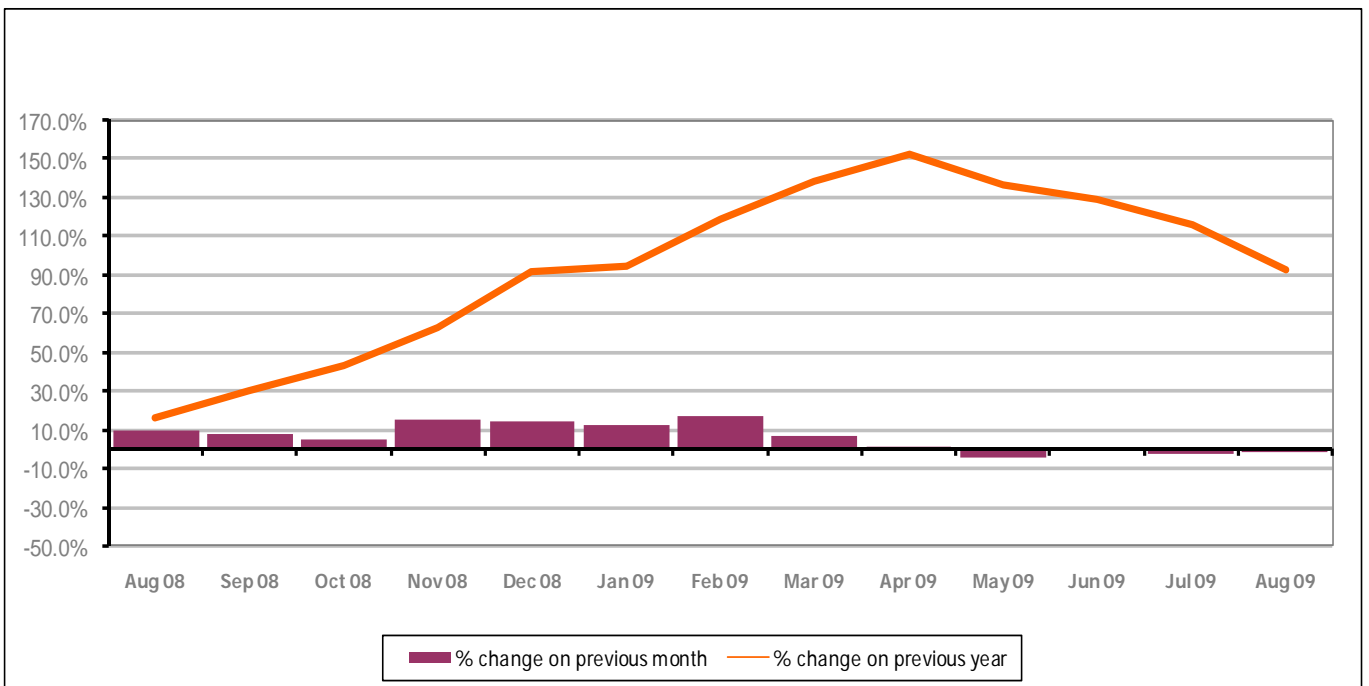


Figure 11 shows the claimant count decreased by 1.4% since the previous month. The change on the previous year has also decreased between August 2009 and July 2009 to 93%.

PART 4: LOCAL AUTHORITY DISTRICT AND WARD ANALYSIS

4.3 Forest of Dean District continued...

Figure 12: Claimant rates across Forest of Dean District wards - August 2009

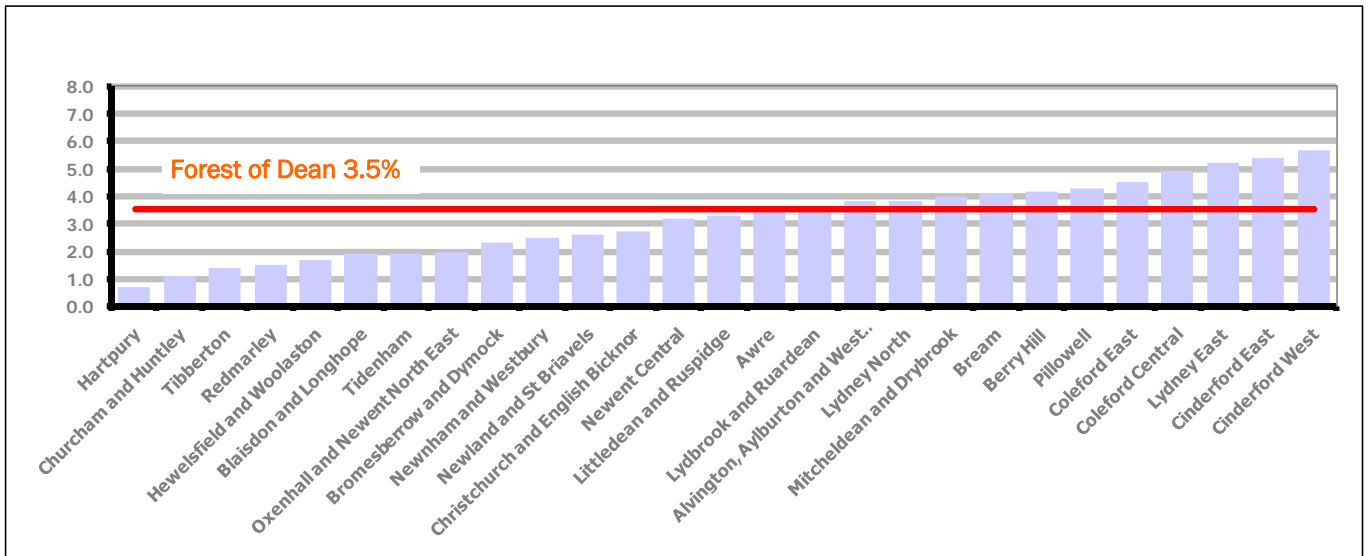


Figure 12 shows the claimant rates for Forest of Dean District wards. The red line represents the average claimant rate across the District of 3.5%. Twelve wards lie above the average.

Table 7: Analysis of Claimant Count at Forest of Dean District ward level - August 2009

District	Ward	Rate	Rank*
Forest	Hartpury	0.7	1
Forest	Churcham and Huntley	1.1	4
Forest	Tibberton	1.4	7
Forest	Redmarley	1.5	10
Forest	Hewelsfield and Woolaston	1.7	18
Forest	Blaisdon and Longhope	1.9	24
Forest	Tidenham	1.9	24
Forest	Oxenhall and Newent North East	2.0	34
Forest	Bromesberrow and Dymock	2.3	45
Forest	Newnham and Westbury	2.5	55
Forest	Newland and St Briavels	2.6	64
Forest	Christchurch and English Bicknor	2.7	68
Forest	Newent Central	3.2	87
Forest	Littledean and Ruspidge	3.3	91
Forest	Awre	3.5	96
Forest	Lydbrook and Ruardean	3.6	97
Forest	Alvington, Aylburton and West Lydney	3.8	100
Forest	Lydney North	3.8	100
Forest	Mitcheldean and Drybrook	4.0	107
Forest	Bream	4.1	110
Forest	Berry Hill	4.2	111
Forest	Pillowell	4.3	113
Forest	Coleford East	4.5	116
Forest	Coleford Central	4.9	120
Forest	Lydney East	5.2	122
Forest	Cinderford East	5.4	125
Forest	Cinderford West	5.7	130

	bottom 10% of county
	first quartile of county
	second quartile of county
	third quartile of county
	fourth quartile of county
	highest 10% of county

* 1 = "best" and 142 = "worst"

Table 7 shows overall claimant rates for the Forest of Dean District wards and their position relative to all wards in Gloucestershire.

PART 4: LOCAL AUTHORITY DISTRICT AND WARD ANALYSIS

4.4 Gloucester City

Claimant Rate and Claimant Count

Figure 13: Gloucester City claimant rate over the last year

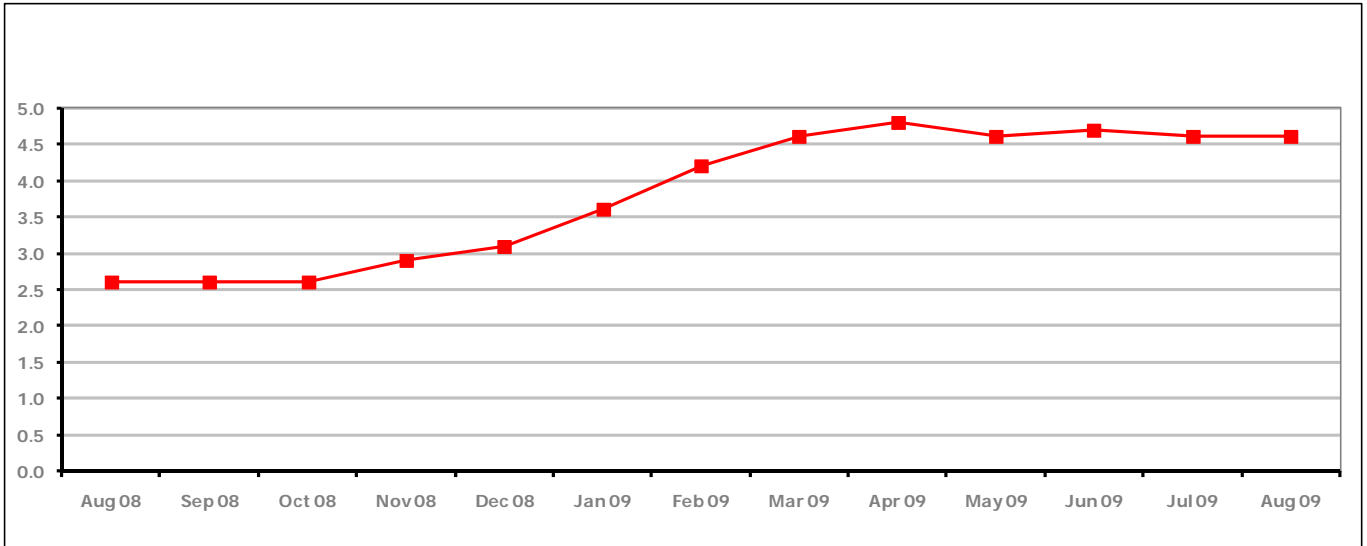


Figure 13 shows the claimant rate for Gloucester City remained the same in August 2009 at 4.6%.

Figure 14: Gloucester City claimants - Month on Month and Year on Year change

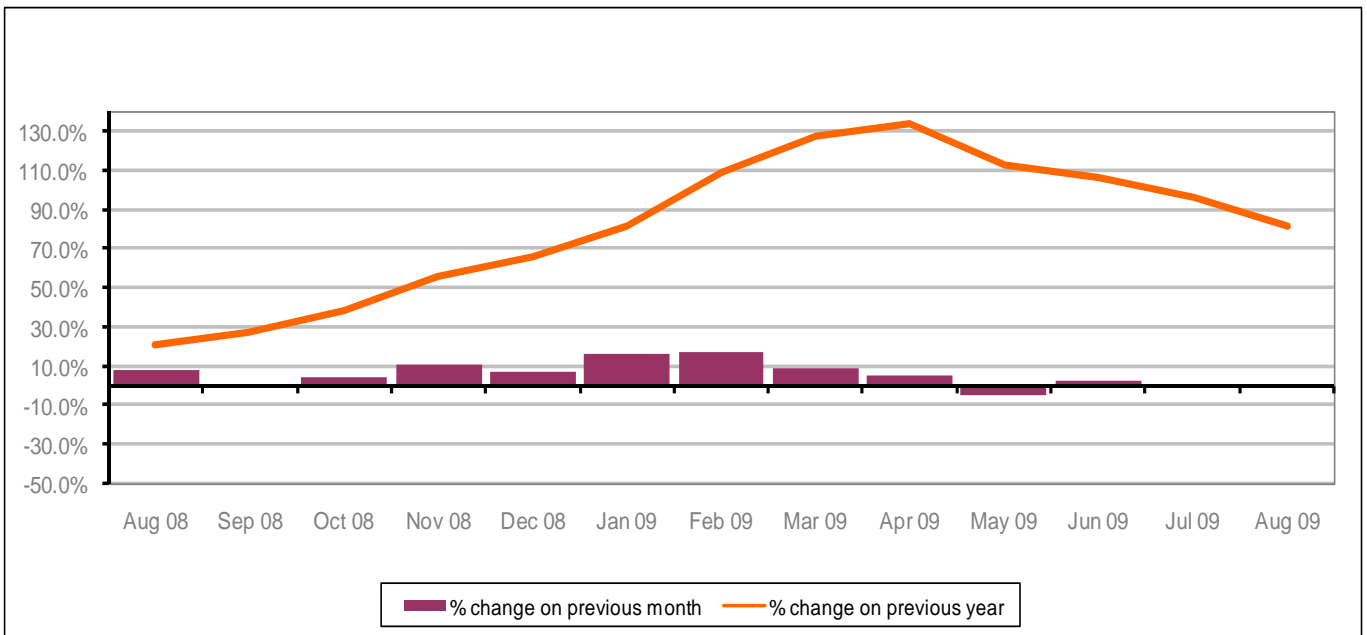


Figure 14 shows the monthly claimant count decreased by 0.6% since July 2009. The change on the previous year has also decreased between July 2009 and August 2009 to 82%.

PART 4: LOCAL AUTHORITY DISTRICT AND WARD ANALYSIS

4.4 Gloucester City continued...

Figure 15: Claimant rates across Gloucester City wards - August 2009

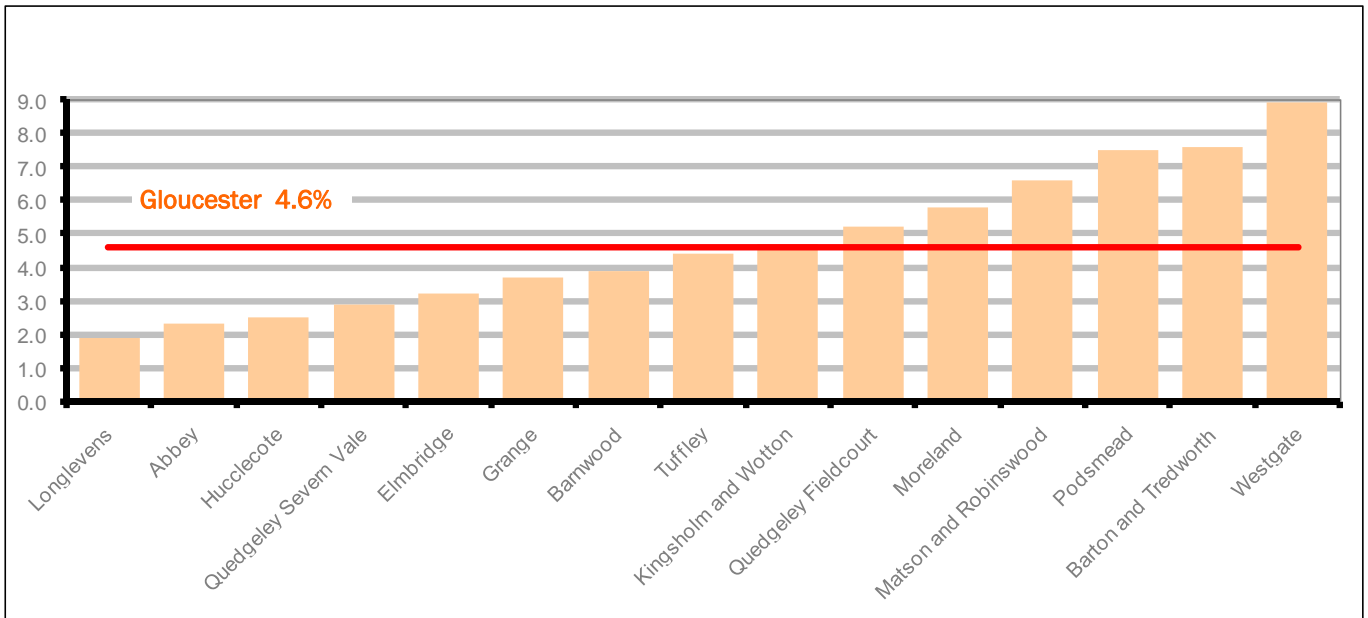


Figure 15 shows the claimant rates for Gloucester City district wards. The red line represents the average claimant rate across the City of 4.6%. Seven wards lie above the average.

Table 8: Analysis of Claimant Count at Gloucester City ward level - August 2009

District	Ward	Rate	Rank*
Gloucester	Longlevens	1.9	24
Gloucester	Abbey	2.3	45
Gloucester	Hucclecote	2.5	55
Gloucester	Quedgeley Severn Vale	2.9	77
Gloucester	Elmbridge	3.2	87
Gloucester	Grange	3.7	98
Gloucester	Barnwood	3.9	103
Gloucester	Tuffley	4.4	115
Gloucester	Kingsholm and Wotton	4.7	118
Gloucester	Quedgeley Fieldcourt	5.2	122
Gloucester	Moreland	5.8	131
Gloucester	Matson and Robinswood	6.6	136
Gloucester	Podsmead	7.5	137
Gloucester	Barton and Tredworth	7.6	139
Gloucester	Westgate	8.9	141

	bottom 10% of county
	first quartile of county
	second quartile of county
	third quartile of county
	fourth quartile of county
	highest 10% of county

* 1 = "best" and 142 = "worst"

Table 8 shows overall claimant rates for Gloucester City wards and their position relative to all wards in Gloucestershire.

PART 4: LOCAL AUTHORITY DISTRICT AND WARD ANALYSIS

4.5 Stroud District

Claimant Rate and Claimant Count

Figure 16: Stroud District claimant rate over the last year

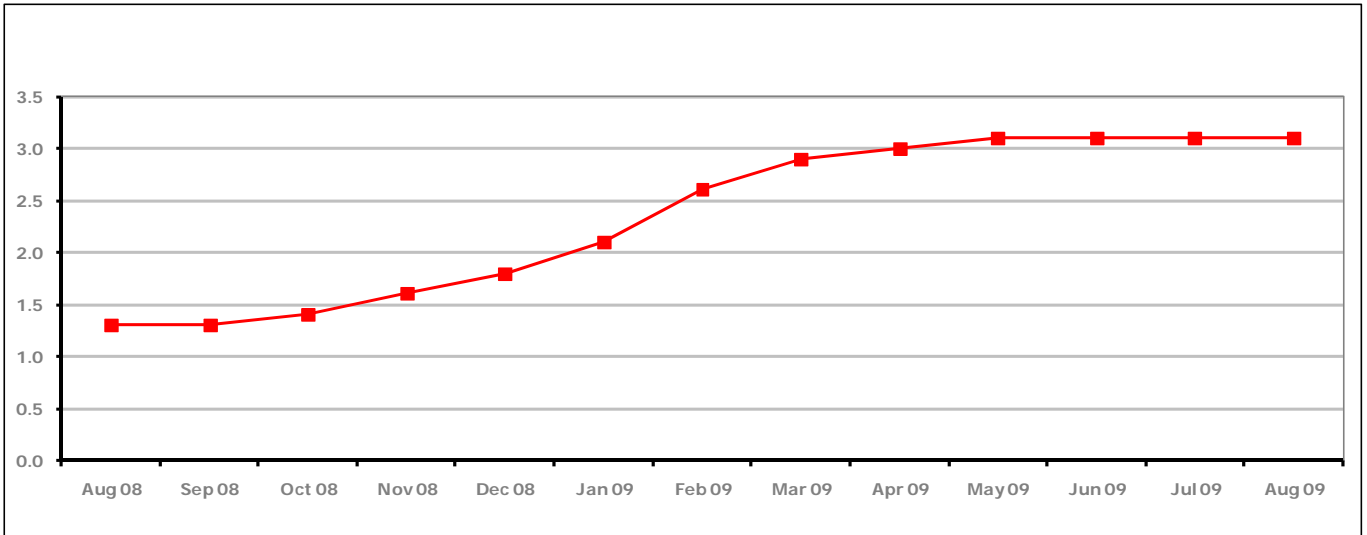


Figure 16 shows the claimant rate for Stroud District remained the same at 3.1%, the highest it has been for over two years.

Figure 17: Stroud District claimants - Month on Month and Year on Year change

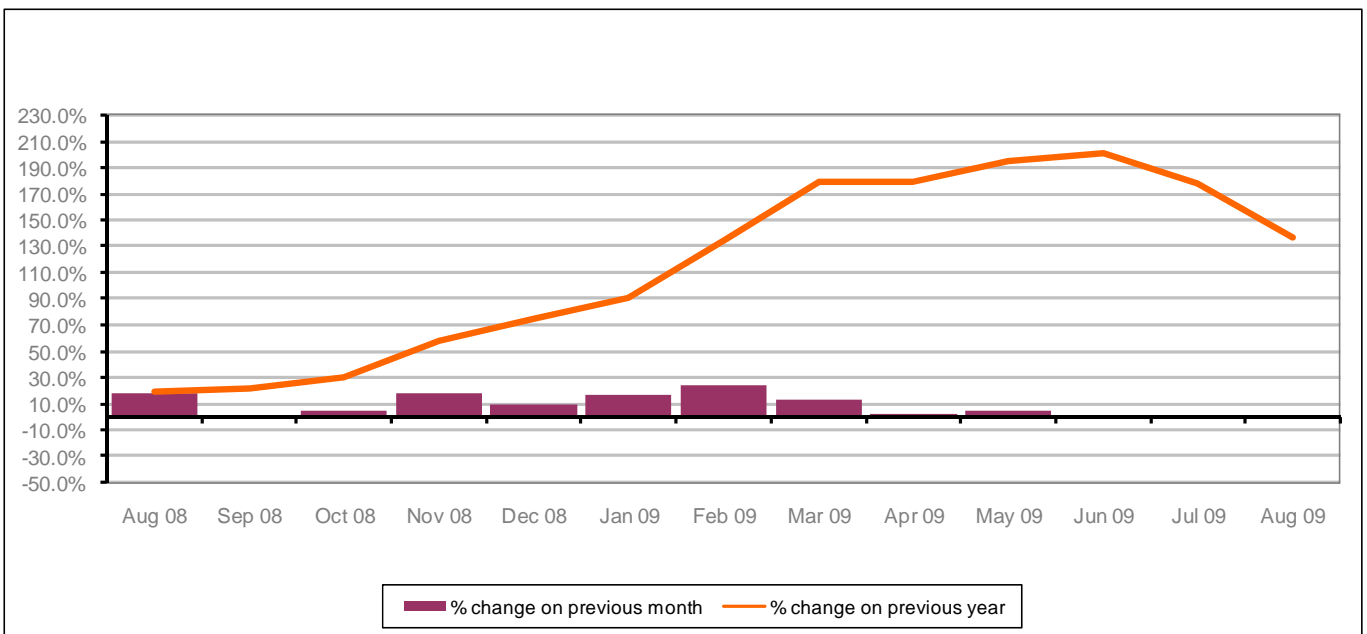


Figure 17 shows the monthly claimant count increased by 1.1% since July 2009. The change on the previous year has decreased between July 2009 and August 2009 to 137%.

PART 4: LOCAL AUTHORITY AND DISTRICT ANALYSIS

4.5 Stroud District continued...

Figure 18: Claimant rates across Stroud District wards - August 2009

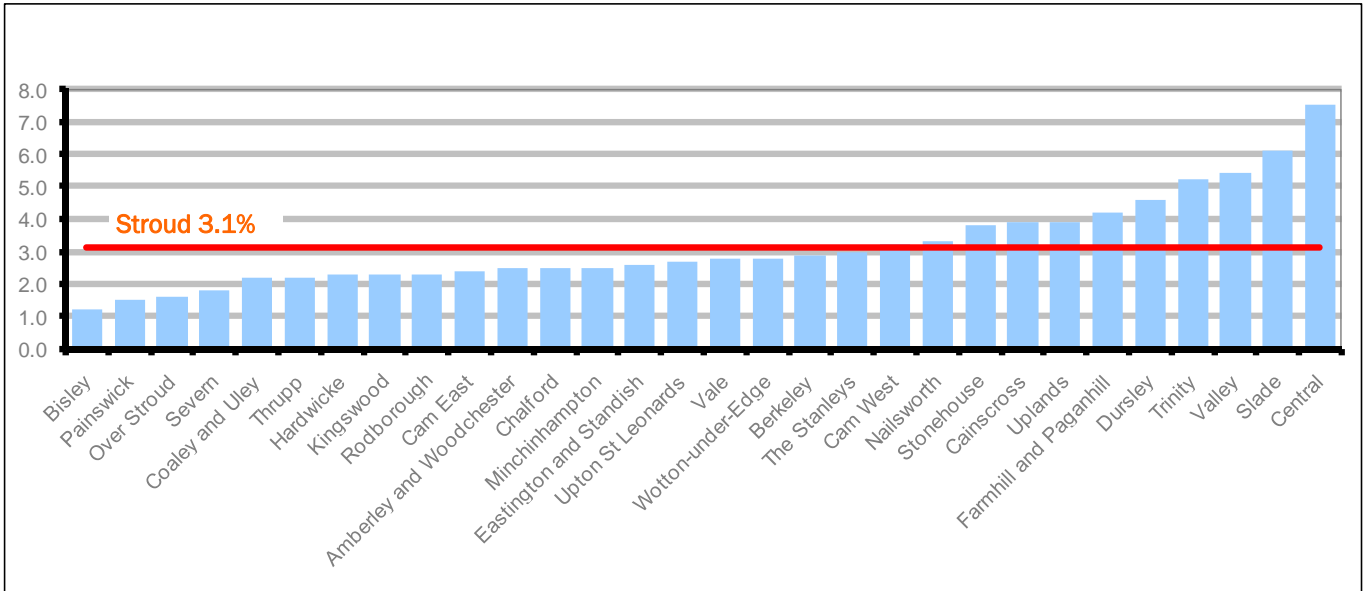
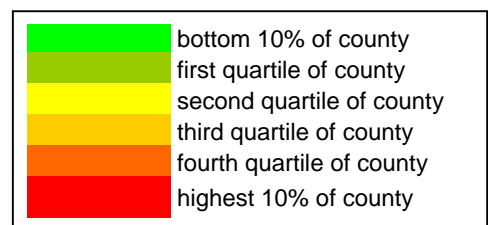


Figure 18 shows the claimant rates in Stroud District wards. The red line represents the average claimant rate across the District of 3.1% and eleven wards are above the average.

Table 9: Analysis of Claimant Count at Stroud District ward level - August 2009

District	Ward	Rate	Rank*
Stroud	Bisley	1.2	5
Stroud	Painswick	1.5	10
Stroud	Over Stroud	1.6	14
Stroud	Severn	1.8	21
Stroud	Coaley and Uley	2.2	41
Stroud	Thrupp	2.2	41
Stroud	Hardwicke	2.3	45
Stroud	Kingswood	2.3	45
Stroud	Rodborough	2.3	45
Stroud	Cam East	2.4	54
Stroud	Amberley and Woodchester	2.5	55
Stroud	Chalford	2.5	55
Stroud	Minchinhampton	2.5	55
Stroud	Eastington and Standish	2.6	64
Stroud	Upton St Leonards	2.7	68
Stroud	Vale	2.8	73
Stroud	Wotton-under-Edge	2.8	73
Stroud	Berkeley	2.9	77
Stroud	The Stanleys	3.0	82
Stroud	Cam West	3.2	87
Stroud	Nailsworth	3.3	91
Stroud	Stonehouse	3.8	100
Stroud	Cainscross	3.9	103
Stroud	Uplands	3.9	103
Stroud	Farmhill and Paganhill	4.2	111
Stroud	Dursley	4.6	117
Stroud	Trinity	5.2	122
Stroud	Valley	5.4	125
Stroud	Slade	6.1	134
Stroud	Central	7.5	137



* 1 = "best" and 142 = "worst"

Table 9 shows overall claimant rates for Stroud District wards and their position relative to all wards in Gloucestershire.

PART 4: LOCAL AUTHORITY DISTRICT AND WARD ANALYSIS

4.6 Tewkesbury District

Claimant Rate and Claimant Count

Figure 19: Tewkesbury District claimant rate over the last year

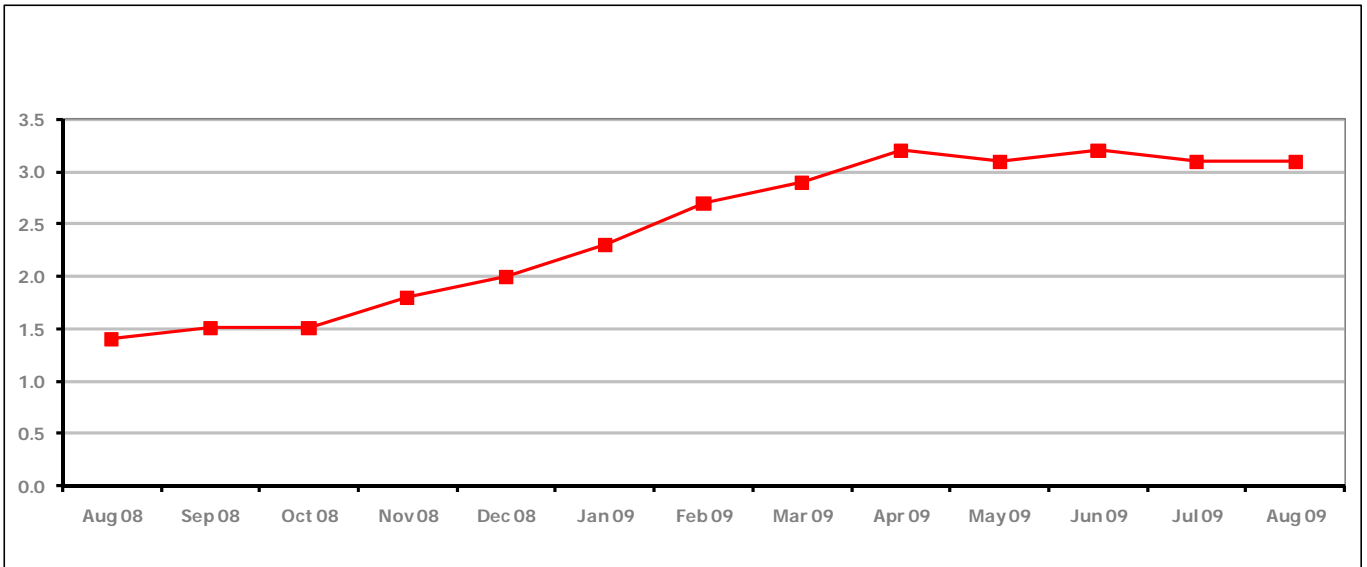


Figure 19 shows the claimant rate for Tewkesbury District remained the same at 3.1% in August

Figure 20: Tewkesbury District claimants - Month on Month and Year on Year change

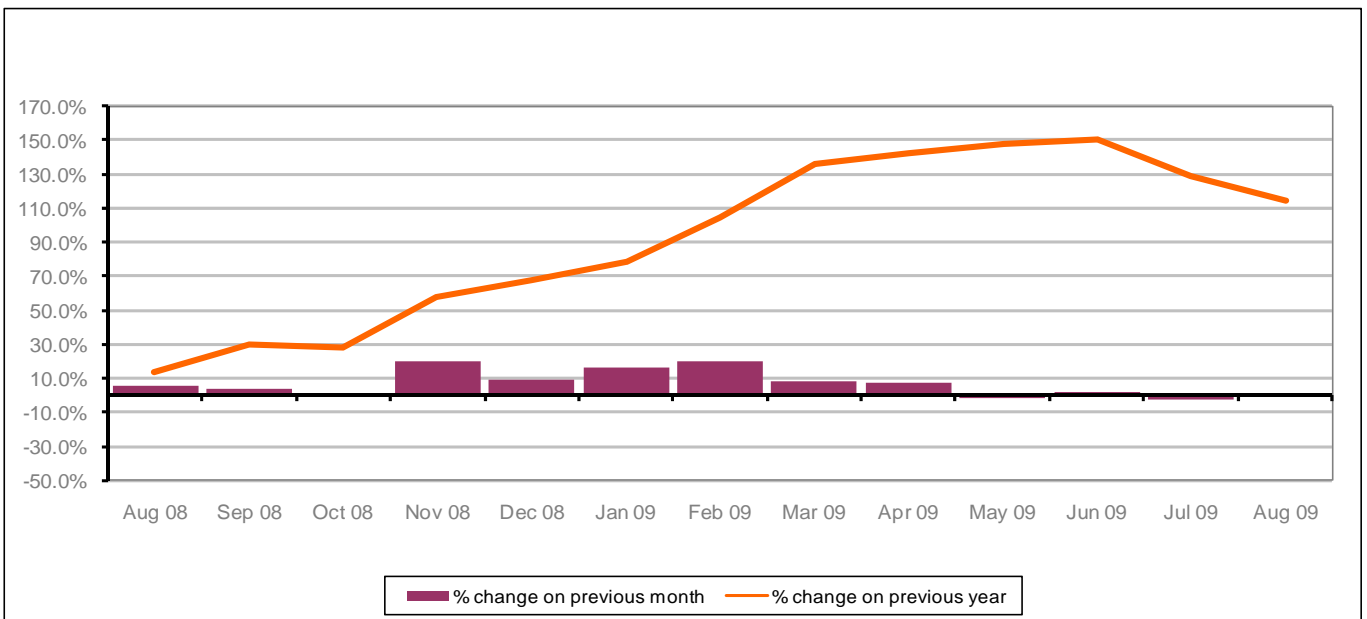


Figure 20 shows that the monthly claimant count decreased in August 2009 by 0.8%. The rate in August 2009 was 114% higher than it was in August 2008.

PART 4: LOCAL AUTHORITY AND DISTRICT ANALYSIS

4.6 Tewkesbury District continued...

Figure 21: Claimant rates across Tewkesbury District wards - August 2009

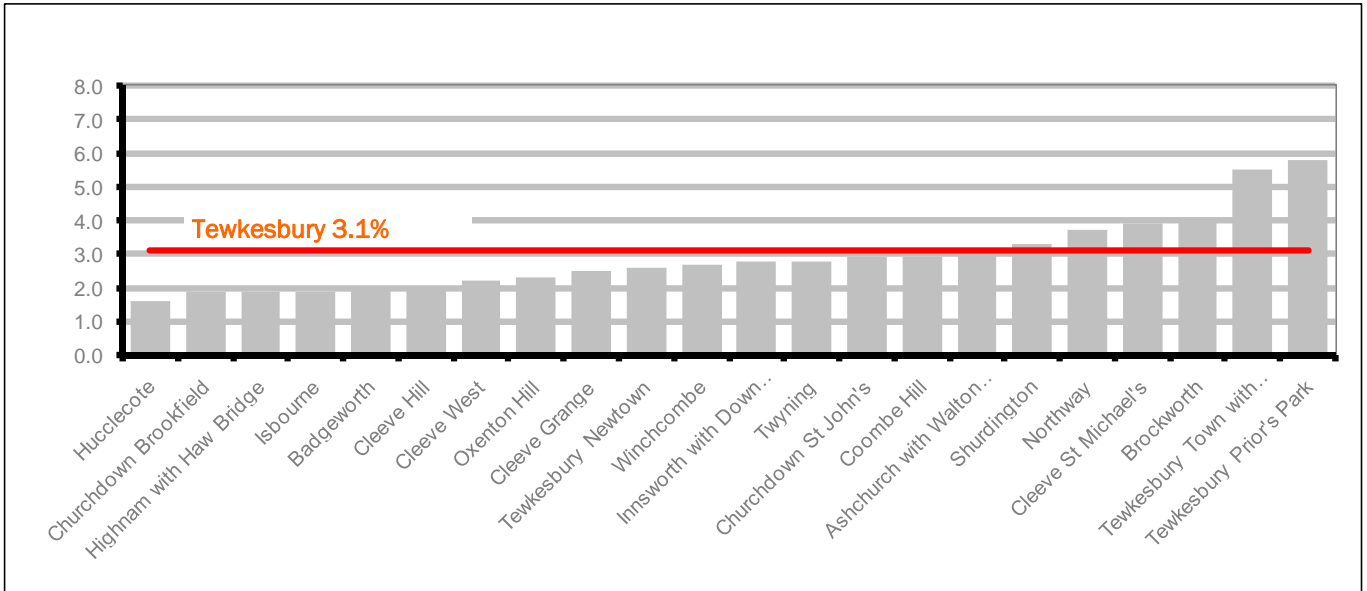
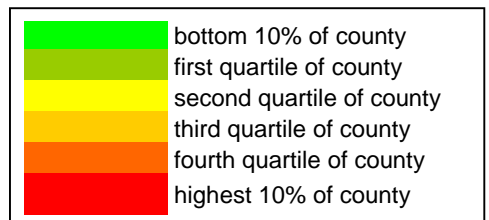


Figure 21 shows the claimant rates in Tewkesbury District wards. The red line represents the average claimant rate across the District of 3.1% and six wards are above the average.

Table 10: Analysis of Claimant Count at Tewkesbury District level - August 2009

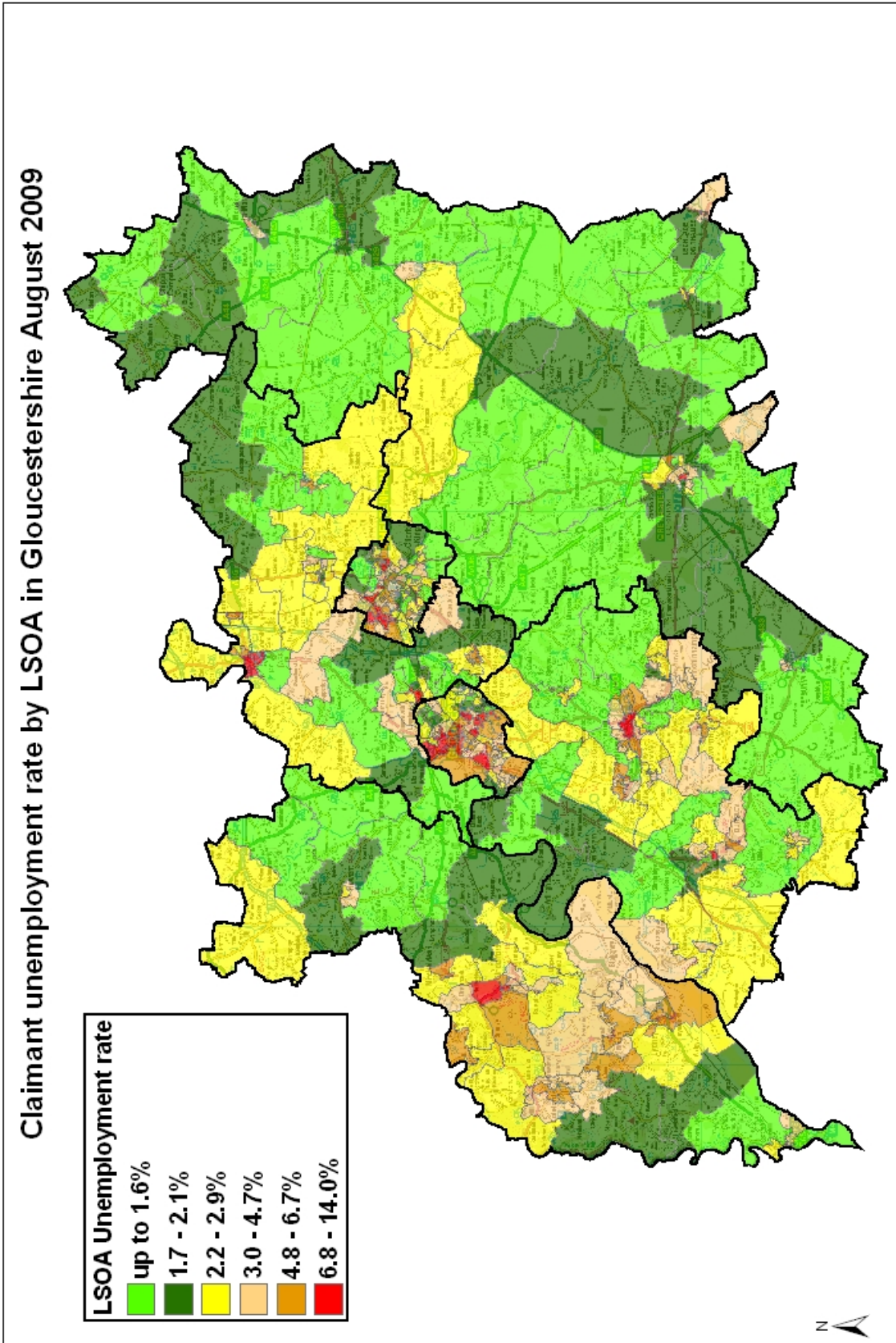
District	Ward	Rate	Rank*
Tewkesbury	Hucclecote	1.6	14
Tewkesbury	Churchdown Brookfield	1.9	24
Tewkesbury	Highnam with Haw Bridge	1.9	24
Tewkesbury	Isbourne	1.9	24
Tewkesbury	Badgeworth	2.0	34
Tewkesbury	Cleeve Hill	2.0	34
Tewkesbury	Cleeve West	2.2	41
Tewkesbury	Oxenton Hill	2.3	45
Tewkesbury	Cleeve Grange	2.5	55
Tewkesbury	Tewkesbury Newtown	2.6	64
Tewkesbury	Winchcombe	2.7	68
Tewkesbury	Innsworth with Down Hatherley	2.8	73
Tewkesbury	Twyning	2.8	73
Tewkesbury	Churchdown St John's	2.9	77
Tewkesbury	Coombe Hill	2.9	77
Tewkesbury	Ashchurch with Walton Cardiff	3.0	82
Tewkesbury	Shurdington	3.3	91
Tewkesbury	Northway	3.7	98
Tewkesbury	Cleeve St Michael's	3.9	103
Tewkesbury	Brockworth	4.0	107
Tewkesbury	Tewkesbury Town with Mitton	5.5	128
Tewkesbury	Tewkesbury Prior's Park	5.8	131



* 1 = "best" and 142 = "worst"

Table 10 shows overall claimant rates for Tewkesbury District wards and their position relative to all wards in Gloucestershire.

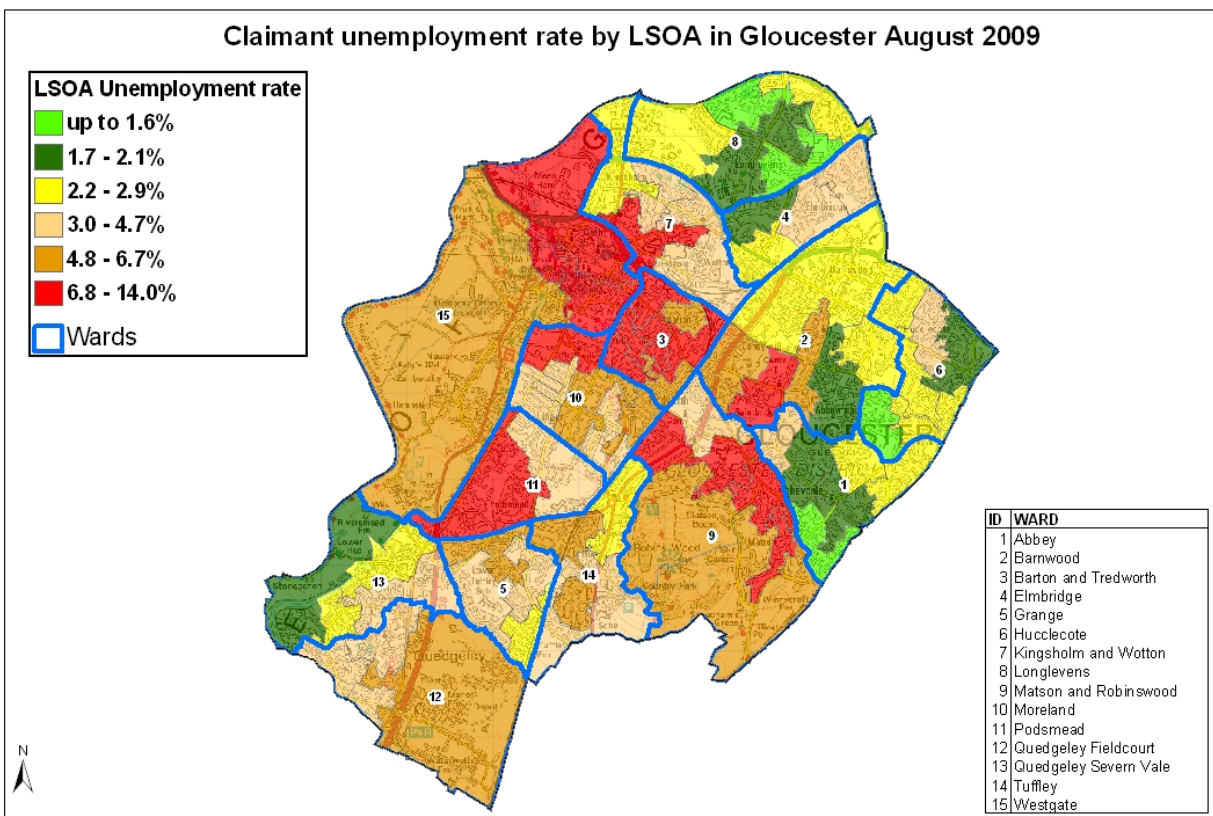
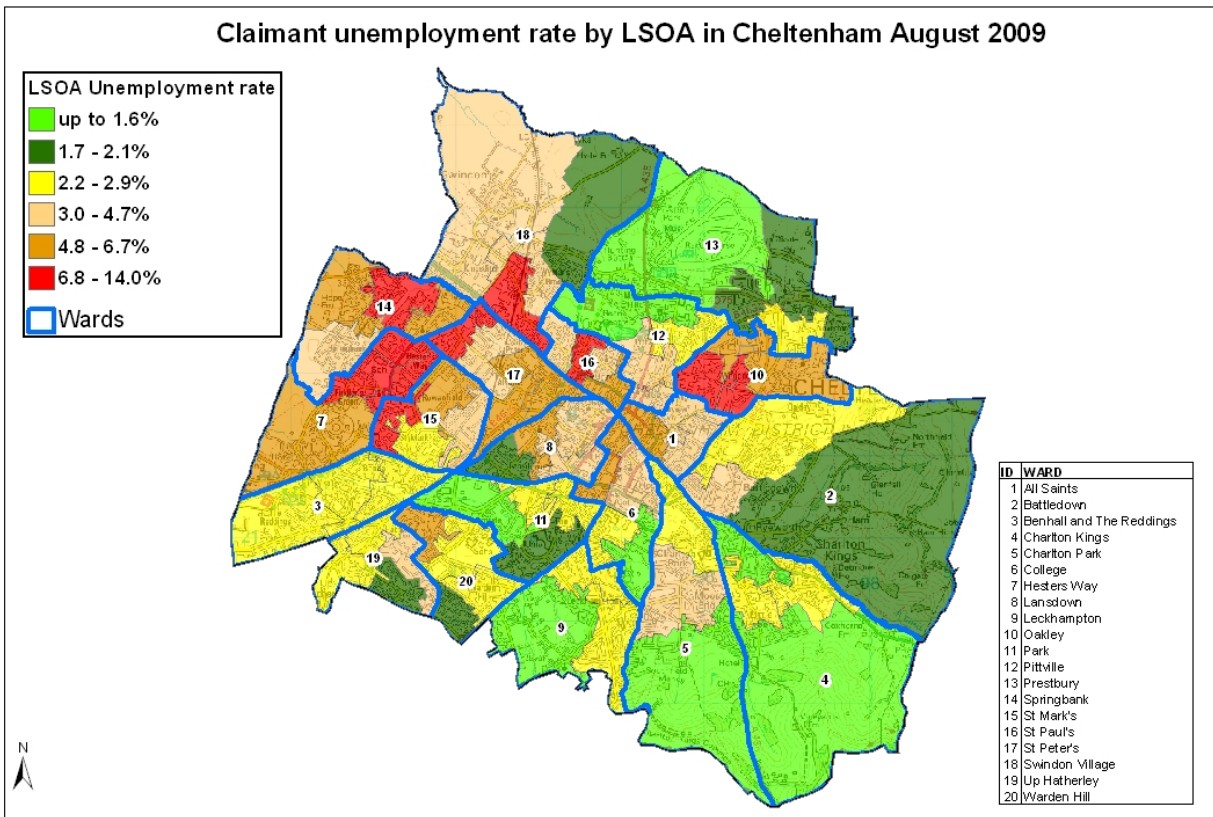
PART 5: MAP SHOWING DISTRIBUTION OF CLAIMANT RATE ACROSS GLOUCESTERSHIRE



This map is reproduced here for use upon the Ordnance Survey material with the permission of Ordnance Survey on behalf of the controller of Her Majesty's Stationery Office © Crown Copyright. Unauthorised reproduction infringes Crown copyright and may lead to prosecution or civil proceedings. © Gloucestershire County Council, 1000 1014 2009.

10 Miles

PART 5: MAP SHOWING DISTRIBUTION OF CLAIMANT RATE ACROSS GLOUCESTERSHIRE



1
Miles

This map is reproduced from (or based upon) the Ordnance Survey map held in the possession of Ordnance Survey on behalf of the Controller of Her Majesty's Stationery Office (© Crown Copyright). Unauthorised reproduction in this or any other form may lead to proceedings for infringement of copyright in the Ordnance Survey data.

PART 6: YOUNG PEOPLE NOT IN EDUCATION, EMPLOYMENT OR TRAINING (NEET) IN GLOUCESTERSHIRE

Data provided by Prospects, the Connexions service in Gloucestershire on the situation of young people (16-18) in Gloucestershire who are not in education, employment or formal training.

Connexions Gloucestershire is required to report performance with the 16-18 age range against nationally defined criteria for counting the NEET group. The NEET group includes young people actively seeking education, employment or training as well as those young people who are either not yet ready or who are unable to access these opportunities because of their personal circumstances. The figures quoted below include young people in both of these categories.

Summary

As at the end of August 2009 there were 658 young people aged 16-18 not in education, employment or training in Gloucestershire and this figure translates into an adjusted (*) 16-18 NEET population of 4.9%. This figure evidences a 0.5% increase from the performance achieved at the end of July 09 with all districts (apart from Tewkesbury's) NEET population also increasing. The largest of these increases was in the Cheltenham District where the NEET population has increased by 1.5%. We have recently received our national comparator data which shows (at the end of July 09) Gloucestershire remaining in the top 2 best performing local authorities in the South West with its NEET levels well below the SW average of 6.6%.

Total NEET Group by District Area 3rd August 2009

	Cheltenham	Cotswold	Forest	Gloucester	Stroud	Tewkesbury	Total
NEET Group	157	59	81	186	126	49	658(*)
% NEET of total 16-18 cohort	7.7%	2.9%	3.7%	4.5%	5.3%	2.9%	4.9%(*)

Update – September Guarantee

The September Guarantee is an offer of education or training for all 16 and 17 year olds and is a national initiative designed to galvanise support for school leavers. During the last few months we have been working closely with key stakeholders to ensure that we meet our obligations with this initiative. We are pleased to report that (to date) we have surpassed last years performance and now have recorded offers of education/training for 94% of 16 yr olds and 84% of 17 yr olds. We are now working hard to ensure all of these offers translate into actual post 16 enrolments as well as following up those young people who still remain without an offer.

The Audit Commission are coming to Gloucestershire

Gloucestershire has been selected to be involved in some research which the Audit Commission are undertaking around the NEET agenda. The research falls broadly into two areas covering how the LA funds work and support for NEET young people and how local partnerships within Gloucestershire work together to support NEET young people. Most of the research is desk based, however colleagues from the Audit Commission will also be visiting Gloucestershire on the 12/13th October to meet with some key contacts. The research will be used to inform national NEET guidance which will be published mid 2010.

If you would like to receive any further information on Gloucestershire's NEET strategy then please contact Andrew.Webster@prospects.co.uk or telephone 01452 426900

(*) Adjustment includes a proportion of young people aged 16-18 whose outcomes are not-known to Connexions Gloucestershire