

Contents

Part 1: Summary A summary of unemployment data at district, County, regional and national level	1
Part 2: County Unemployment figures for the County compared to the South West and the rest of the UK	3
Part 3: Districts A comparative break down of unemployment figures by district	4
Part 4: Wards Further breakdown of unemployment figures by ward:	
Cheltenham	6
Cotswolds	8
Forest of Dean	10
Gloucester	12
Stroud	14
Tewkesbury	16
Part 5: Map Distribution of claimant rate across Gloucestershire	18
Part 6: Young People Data about Young People Not in Education, Employment or Training (NEET)	20

INTRODUCTION

The Unemployment Bulletin provides a monthly update on unemployment data for Gloucestershire, the South West region and the United Kingdom. It is produced by the Economic section of the County Council Chief Executive's Support Unit Research Team. The data is sourced from the Office for National Statistics via Nomis (www.nomis.co.uk).

The claimant count measures the number of people claiming unemployment-related benefit (currently Job Seeker's allowance). The claimant rate is the number of claimants as a proportion of the working age population.

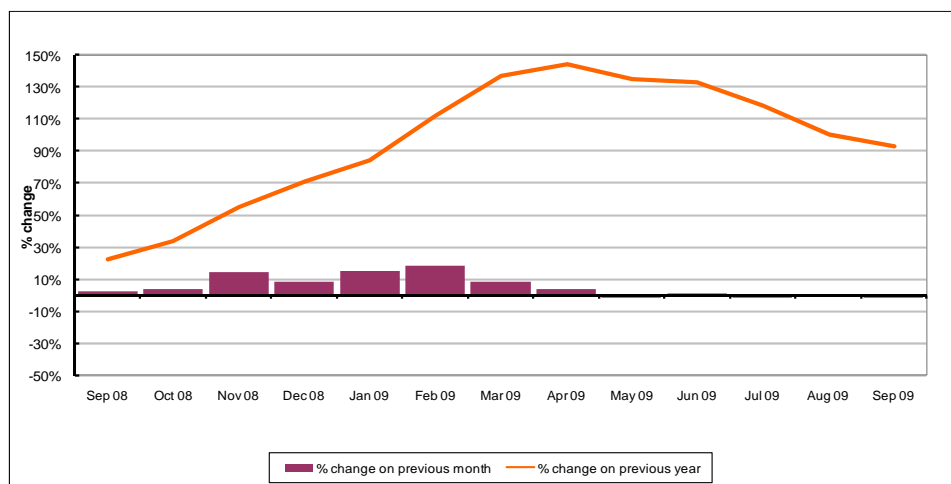
PART 1: SUMMARY

The claimant rate in Gloucestershire was 3.5% in September 2009. This was a decline of 0.1% on the August 2009 figure. The rate has decreased from last month. The UK and South West rate remained the same as last month at 4.2% and 3.0% respectively. Gloucestershire's rate remains above the South West average of 3.0%, but 0.7% lower than the UK average of 4.2%.

The claimant count in Gloucestershire in September 2009 declined by 169 people. The amount of people claiming in September 2009 was 1.3% lower than the number in August 2009 compared to a 1.5% decline in the South West and a 0.7% decrease for the UK.

The claimant count in Gloucestershire has decreased. The count was 93% higher in September 2009 than at the same point in the previous year as shown in the graph below.

Gloucestershire claimants - Month on Month and Year on Year change: September 2008 to September 2009



Source: ONS Crown Copyright Reserved

Produced by:

The Research Team (Economics)
 Chief Executive Support Unit
 Gloucestershire County Council
 October 2009

DISTRICTS AT A GLANCE

At a glance unemployment information grouped by district. Includes:

Claim count: Total number of people claiming Job Seekers Allowance in September 2009

Compared to last month: How much larger/smaller September's claim count is compared to August, expressed as a %

Claimant rate: The % of working population claiming Job Seekers Allowance in September 2009

Highest claiming ward: The ward with the highest claim count in that district and the rate

CHELTENHAM BOROUGH

Claim count:	2,915
Compared to last month:	-2.0%
Claimant rate:	4.2%
Highest claiming ward	Hesters Way (8.8%)

GLOUCESTER CITY

Claim count:	3,240
Compared to last month:	- 1.4%
Claimant rate:	4.5%
Highest claiming ward	Westgate (8.6%)

COTSWOLD DISTRICT

Claim count:	1,061
Compared to last month:	-0.7%
Claimant rate:	2.2%
Highest claiming ward	Cirencester Watermoor (4.5%)

STROUD DISTRICT

Claim count:	2,040
Compared to last month:	-0.9%
Claimant rate:	3.1%
Highest claiming ward	Central (7.5%)

FOREST OF DEAN

Claim count:	1,641
Compared to last month:	- 4.1%
Claimant rate:	3.4%
Highest claiming ward	Cinderford West (5.3%)

TEWKESBURY BOROUGH

Claim count:	1,473
Compared to last month:	+2.3%
Claimant rate:	3.1%
Highest claiming ward	Tewkesbury Town with Mitton (5.8%)

YOUNG PEOPLE NOT IN EDUCATION, EMPLOYMENT OR TRAINING (NEET)

As at the end of September 2009 there were 704 young people aged 16-18 not in education, employment or training in Gloucestershire and this figure translates into an adjusted (*) 16-18 NEET population of 4.7%.

PART 2: UK, SW AND GLOUCESTERSHIRE INDICATORS

The unemployment situation in Gloucestershire compared to the South West and the UK.

Claimant Rate

Figure 1: Claimant Rate for Gloucestershire, the South West and UK over the past year

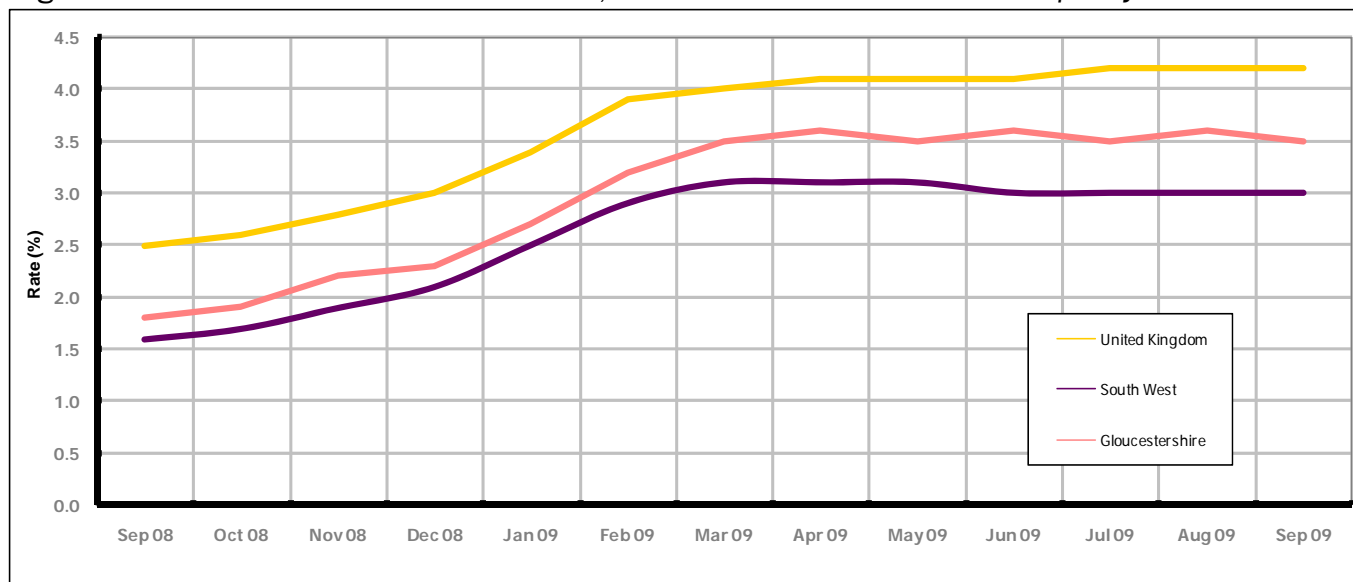


Figure 1 shows the claimant rate for Gloucestershire at 3.5% in September 2009. The rate has remained slightly higher than the South West average over the past year, but persistently lower by approximately 0.7% against the UK average during the same period. September 2009 represented a 0.1% decrease on August 2009.

Claimant Count

Table 1: Analysis of UK, South West and Gloucestershire Claimant Counts

Area	Claimant Count in September 2009	% change on August 2009	Average % increase over the last six months	Consecutive months increasing
UK	1,591,112	-0.7%	+0.4%	0
South West	93,283	-1.5%	-0.7%	0
Gloucestershire	12,370	-1.3%	-0.4%	0

Table 1 shows that in September 2009, the number of claimants in Gloucestershire was 1.3% lower than the number in August 2009.

The average growth in claimants in Gloucestershire for the six months to September 2009 was -0.4%. This is 0.8% lower than the UK average and 0.3% higher than the South West region.

PART 3: LOCAL AUTHORITY DISTRICT ANALYSIS

Claimant Rate and Claimant Count

Figure 2: Claimant Rate (%) across Gloucestershire - September 2009

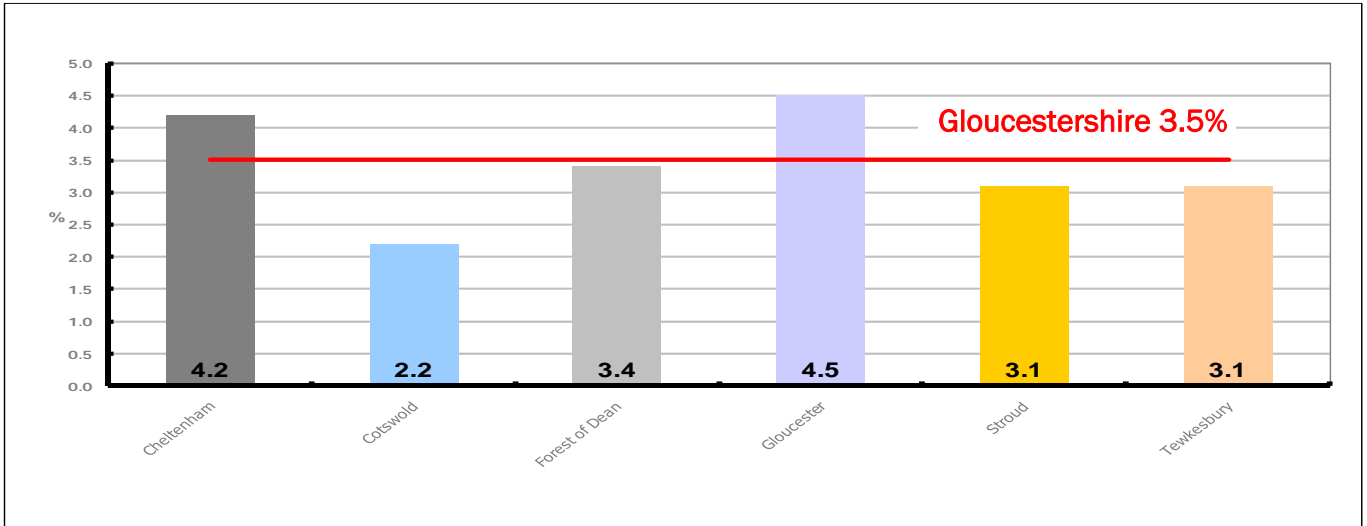


Figure 2 shows the claimant rate for September 2009 in Gloucestershire. Between August 2009 and September 2009 Forest of Dean and Gloucester districts experienced a decrease the other districts remained the same.

Figure 3: Total claimants over the past year across Gloucestershire Districts

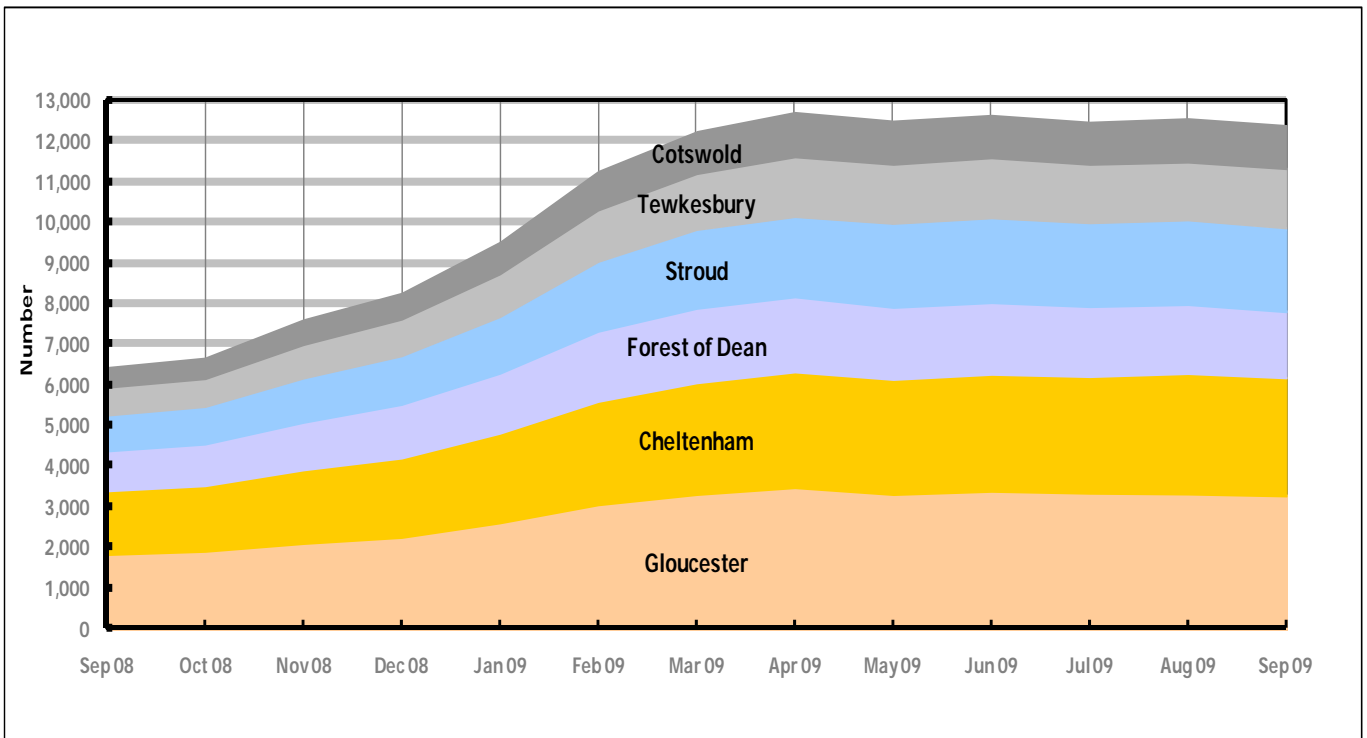


Figure 3 shows the overall claimant count by district for Gloucestershire over the past year. It demonstrates a noticeable levelling off since April 2009.

Table 2: Analysis of Gloucestershire and District Claimant Counts

Total	Sep 09 Number	Sep 09 Rate	Aug 09 Number	Aug 09 Rate	Monthly change	% monthly change	Monthly change of rate
Gloucestershire	12,370	3.5	12,539	3.6	-169	-1.3%	-0.1
Cheltenham	2,915	4.2	2,975	4.2	-60	-2.0%	0.0
Cotswold	1,061	2.2	1,068	2.2	-7	-0.7%	0.0
Forest of Dean	1,641	3.4	1,711	3.5	-70	-4.1%	-0.1
Gloucester	3,240	4.5	3,286	4.6	-46	-1.4%	-0.1
Stroud	2,040	3.1	2,059	3.1	-19	-0.9%	0.0
Tewkesbury	1,473	3.1	1,440	3.1	33	2.3%	0.0

Table 2 shows the change in the claimant count in September 2009 compared to August 2009. Tewkesbury district experienced an increase while the remaining districts underwent a decrease.

Table 3: Analysis of Male Gloucestershire and District Claimant Counts

Male	Sep 09 Number	Sep 09 Rate	Aug 09 Number	Aug 09 Rate	Monthly change	% monthly change	Monthly change of rate
Gloucestershire	8,980	4.9	9,163	5.0	-183	-2.0%	-0.1
Cheltenham	2,134	5.8	2,187	5.9	-53	-2.4%	-0.1
Cotswold	767	3.0	775	3.0	-8	-1.0%	0.0
Forest of Dean	1,170	4.5	1,237	4.8	-67	-5.4%	-0.3
Gloucester	2,427	6.5	2,468	6.7	-41	-1.7%	-0.2
Stroud	1,468	4.2	1,492	4.3	-24	-1.6%	-0.1
Tewkesbury	1,014	4.1	1,004	4.1	10	1.0%	0.0

Table 3 shows the change in the male claimant count in September 2009 compared to August 2009. Tewkesbury district experienced an increase while the other districts underwent a decrease.

Table 4: Analysis of Female Gloucestershire and District Claimant Counts

Female	Sep 09 Number	Sep 09 Rate	Aug 09 Number	Aug 09 Rate	Monthly change	% monthly change	Monthly change of rate
Gloucestershire	3,390	2.0	3,376	2.0	14	0.4%	0.0
Cheltenham	781	2.3	788	2.4	-7	-0.9%	-0.1
Cotswold	294	1.3	293	1.3	1	0.3%	0.0
Forest of Dean	471	2.1	474	2.1	-3	-0.6%	0.0
Gloucester	813	2.4	818	2.4	-5	-0.6%	0.0
Stroud	572	1.8	567	1.8	5	0.9%	0.0
Tewkesbury	459	2.0	436	1.9	23	5.3%	0.1

Table 4 shows the change in the female claimant count in September 2009 compared to August 2009. Cotswold, Stroud and Tewkesbury district experienced an increase, while Cheltenham, Forest of Dean and Gloucester districts underwent a decline.

PART 4: LOCAL AUTHORITY DISTRICT AND WARD ANALYSIS

This section covers the six districts and a comparison of their constituent wards.

4.1 Cheltenham Borough

Claimant Rate and Claimant Count

Figure 4: Cheltenham Borough claimant rate over the last year

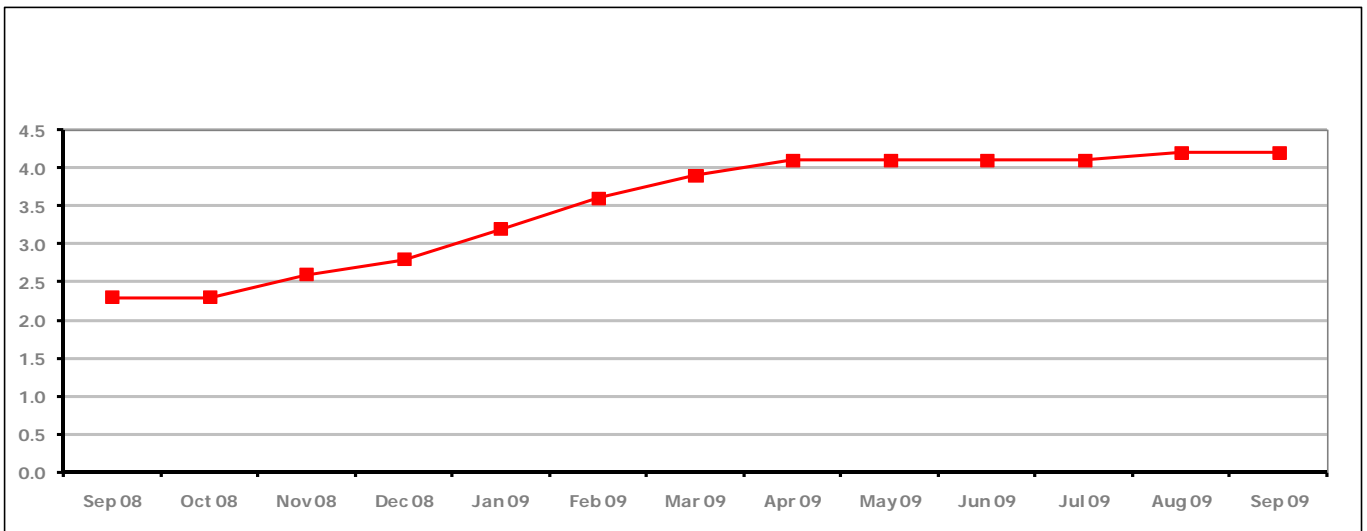


Figure 4 shows the claimant rate in Cheltenham remained the same as last month at 4.2%.

Figure 5: Cheltenham Borough claimants - Month on Month and Year on Year change

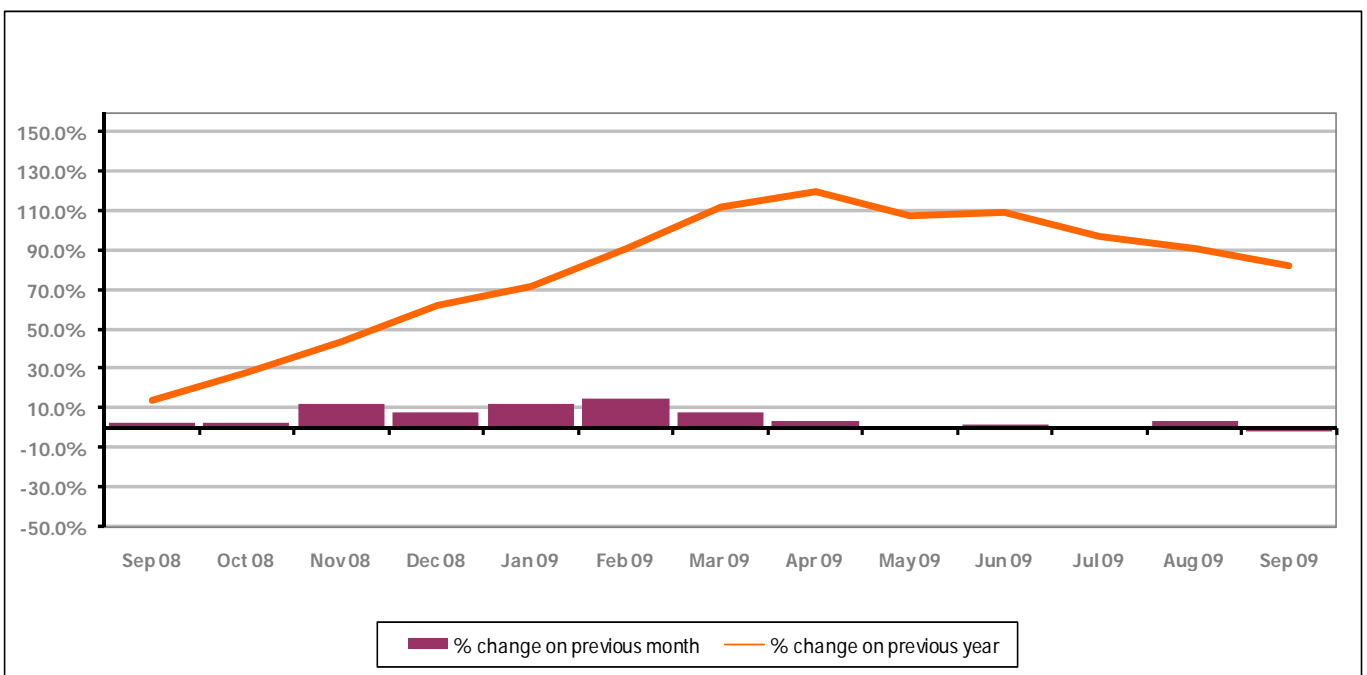


Figure 5 shows the claimant count declined by 2.0% since last month. In addition, the change on the previous year has gone down in September 2009 compared to August 2009 to 82%.

PART 4: LOCAL AUTHORITY DISTRICT AND WARD ANALYSIS

4.1 Cheltenham Borough continued...

Figure 6: Claimant rates across Cheltenham Borough wards - September 2009

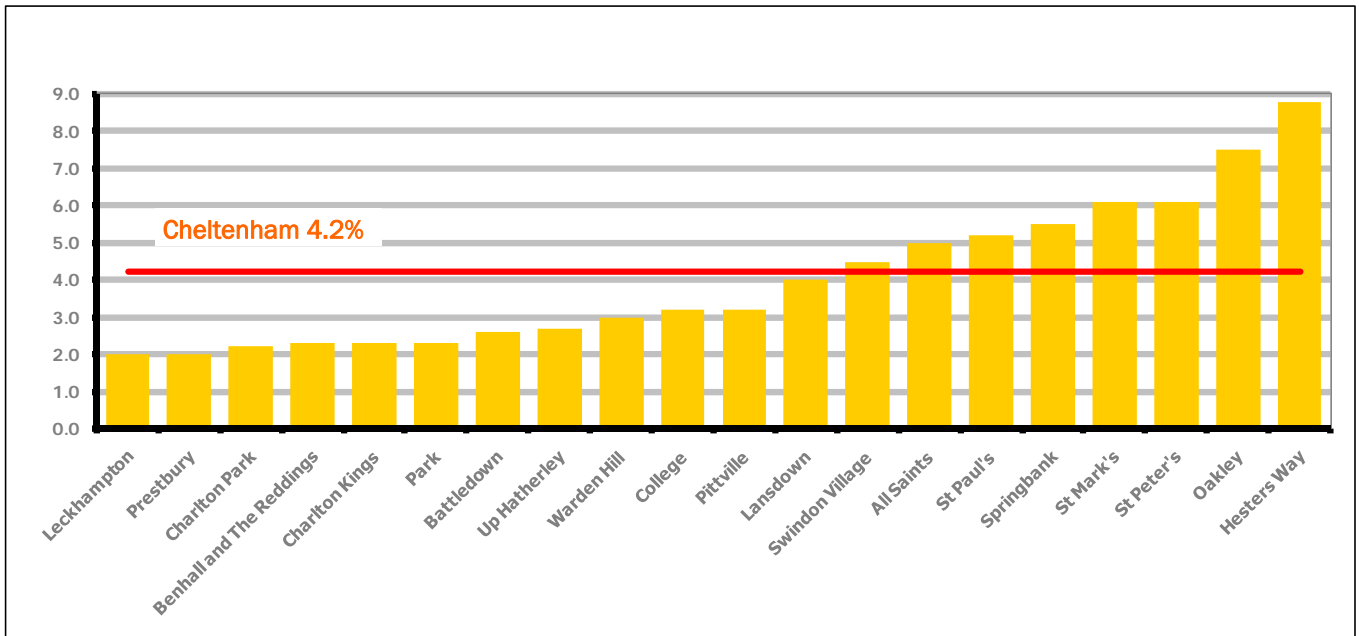
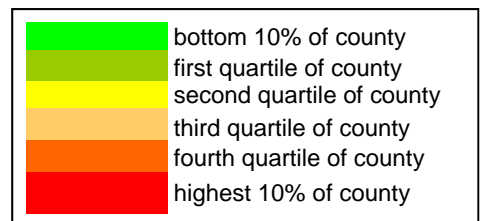


Figure 6 shows the claimant rates for Cheltenham Borough wards. The red line represents the average claimant rate across the Borough of 4.2%. Eight wards lie above the average.

Table 5: Analysis of Claimant Count at Cheltenham Borough ward level - September 2009

District	Ward	Rate	Rank*
Cheltenham	Leckhampton	2.0	34
Cheltenham	Prestbury	2.0	34
Cheltenham	Charlton Park	2.2	43
Cheltenham	Benhall and The Reddings	2.3	49
Cheltenham	Charlton Kings	2.3	49
Cheltenham	Park	2.3	49
Cheltenham	Battledown	2.6	63
Cheltenham	Up Hatherley	2.7	67
Cheltenham	Warden Hill	3.0	77
Cheltenham	College	3.2	90
Cheltenham	Pittville	3.2	90
Cheltenham	Lansdown	4.0	106
Cheltenham	Swindon Village	4.5	116
Cheltenham	All Saints	5.0	125
Cheltenham	St Paul's	5.2	126
Cheltenham	Springbank	5.5	129
Cheltenham	St Mark's	6.1	133
Cheltenham	St Peter's	6.1	133
Cheltenham	Oakley	7.5	139
Cheltenham	Hesters Way	8.8	142



* 1 = "best" and 142 = "worst"

Table 5 shows overall claimant rates for Cheltenham Borough wards and their position relative to all wards in Gloucestershire.

PART 4: LOCAL AUTHORITY DISTRICT AND WARD ANALYSIS

4.2 Cotswold District

Claimant Rate and Claimant Count

Figure 7: Cotswold District claimant rate over the last year

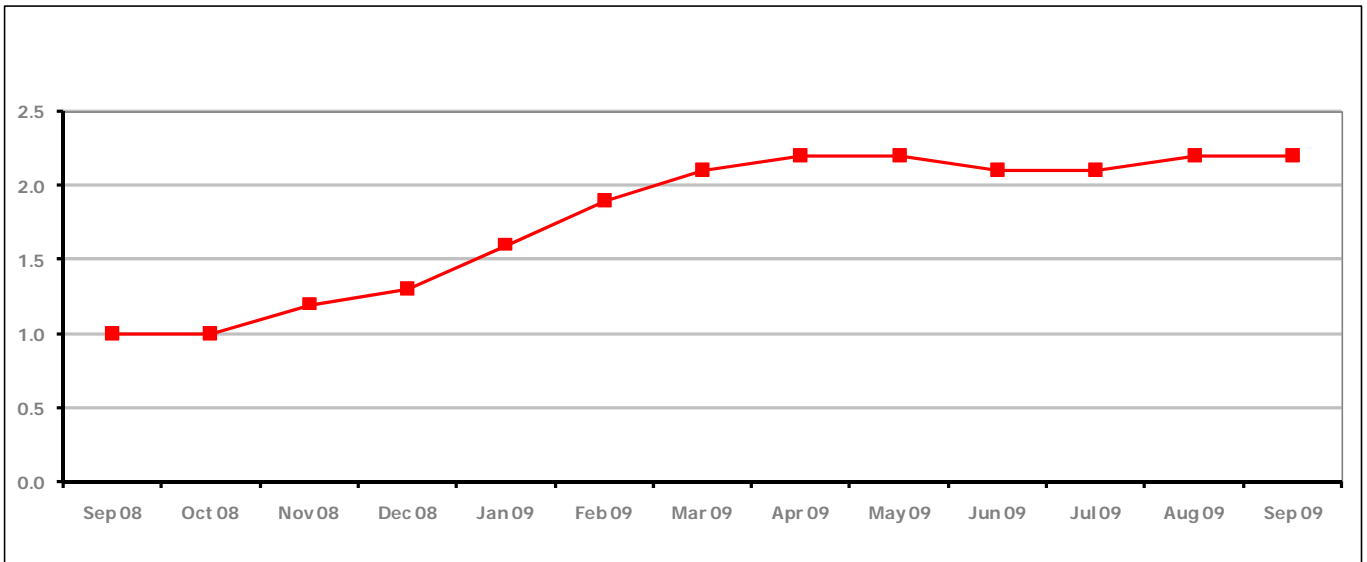


Figure 7 shows the claimant rate in Cotswold District remained the same as last month as 2.2%. Prior to this the rate had been lower for two months.

Figure 8: Cotswold District claimants - Month on Month and Year on Year change

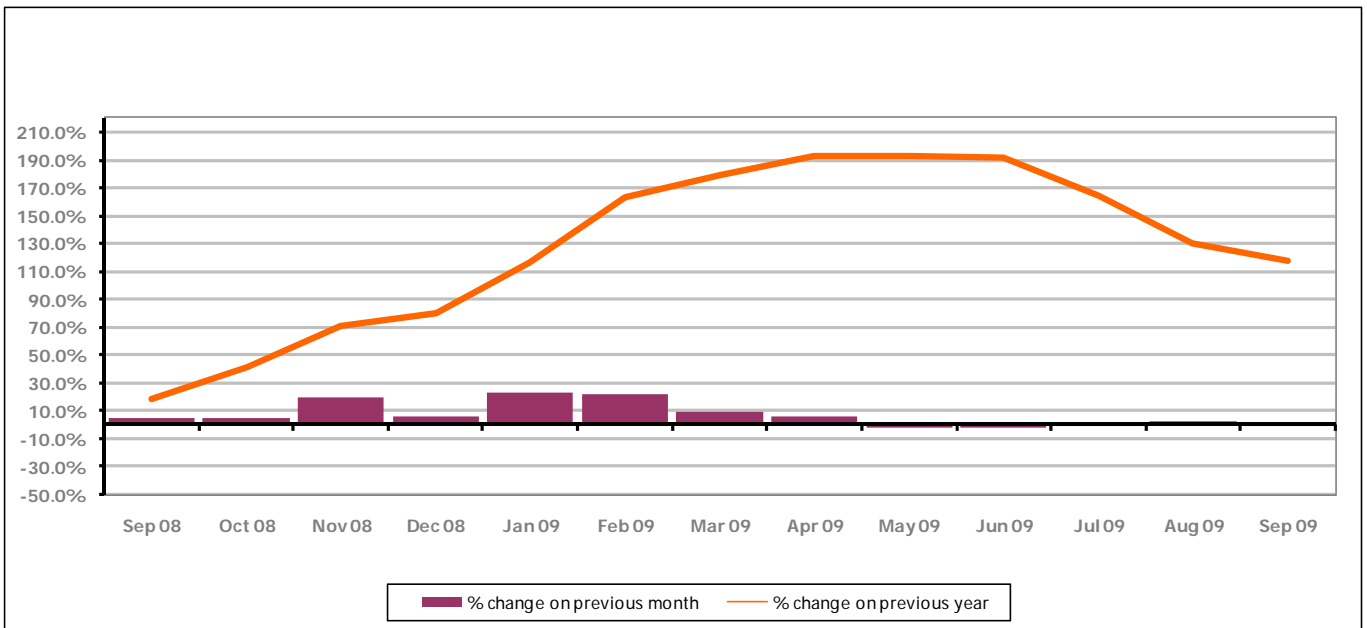


Figure 8 shows the claimant count decreased by 0.7% since August 2009. The change on the previous year has decreased from August 2009 to September 2009 to 117.9%.

PART 4: LOCAL AUTHORITY DISTRICT AND WARD ANALYSIS

4.2 Cotswold District continued...

Figure 9: Claimant rates across Cotswold District wards - September 2009

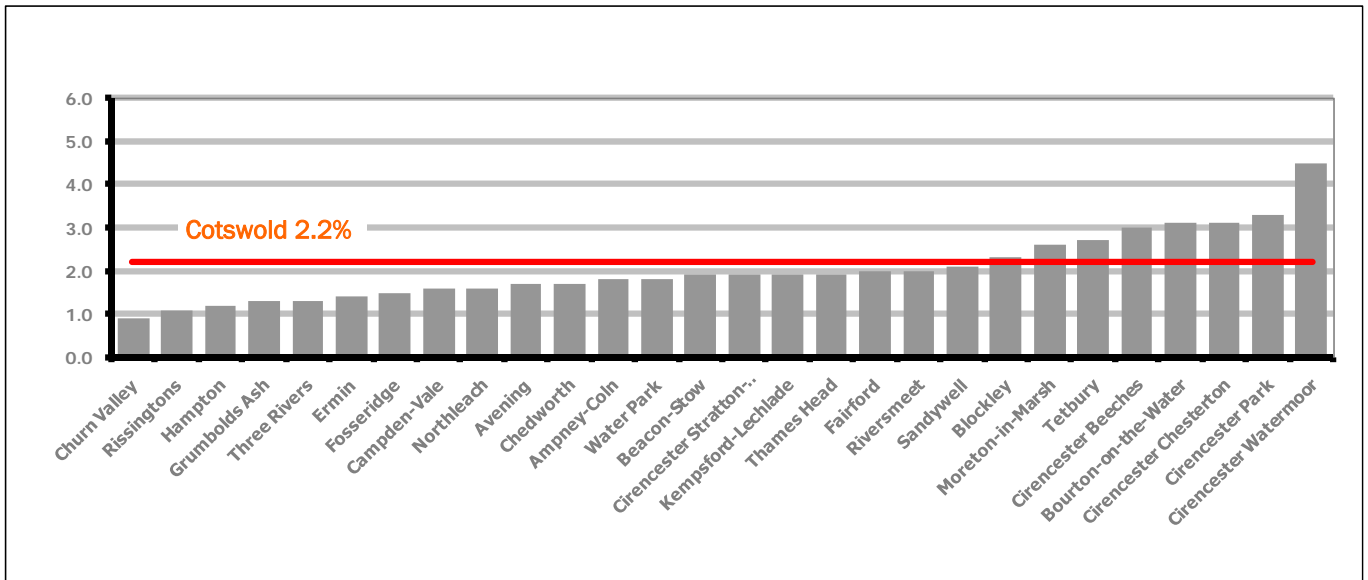
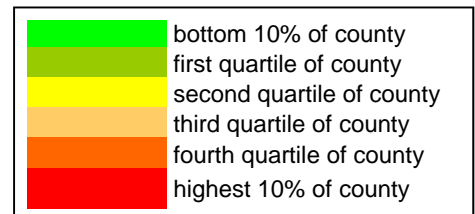


Figure 9 shows the claimant rates for Cotswold District wards. The red line represents the average claimant rate across the District of 2.2%. Eight wards lie above the average.

Table 6: Analysis of Claimant Count

District	Ward	Rate	Rank*
Cotswolds	Churn Valley	0.9	2
Cotswolds	Rissingtons	1.1	3
Cotswolds	Hampton	1.2	6
Cotswolds	Grumbolds Ash	1.3	7
Cotswolds	Three Rivers	1.3	7
Cotswolds	Ermin	1.4	9
Cotswolds	Fosseridge	1.5	10
Cotswolds	Campden-Vale	1.6	14
Cotswolds	Northleach	1.6	14
Cotswolds	Avening	1.7	17
Cotswolds	Chedworth	1.7	17
Cotswolds	Ampney-Coln	1.8	22
Cotswolds	Water Park	1.8	22
Cotswolds	Beacon-Stow	1.9	28
Cotswolds	Cirencester Stratton-Whiteway	1.9	28
Cotswolds	Kempsford-Lechlade	1.9	28
Cotswolds	Thames Head	1.9	28
Cotswolds	Fairford	2.0	34
Cotswolds	Riversmeet	2.0	34
Cotswolds	Sandywell	2.1	41
Cotswolds	Blockley	2.3	49
Cotswolds	Moreton-in-Marsh	2.6	63
Cotswolds	Tetbury	2.7	67
Cotswolds	Cirencester Beeches	3.0	77
Cotswolds	Bourton-on-the-Water	3.1	84
Cotswolds	Cirencester Chesterton	3.1	84
Cotswolds	Cirencester Park	3.3	92
Cotswolds	Cirencester Watermoor	4.5	116



* 1 = "best" and 142 = "worst"

Table 6 shows overall claimant rates for Cotswold District wards and their position relative to all wards in Gloucestershire.

PART 4: LOCAL AUTHORITY DISTRICT AND WARD ANALYSIS

4.3 Forest of Dean District

Claimant Rate and Claimant Count

Figure 10: Forest of Dean District claimant rate over the last year

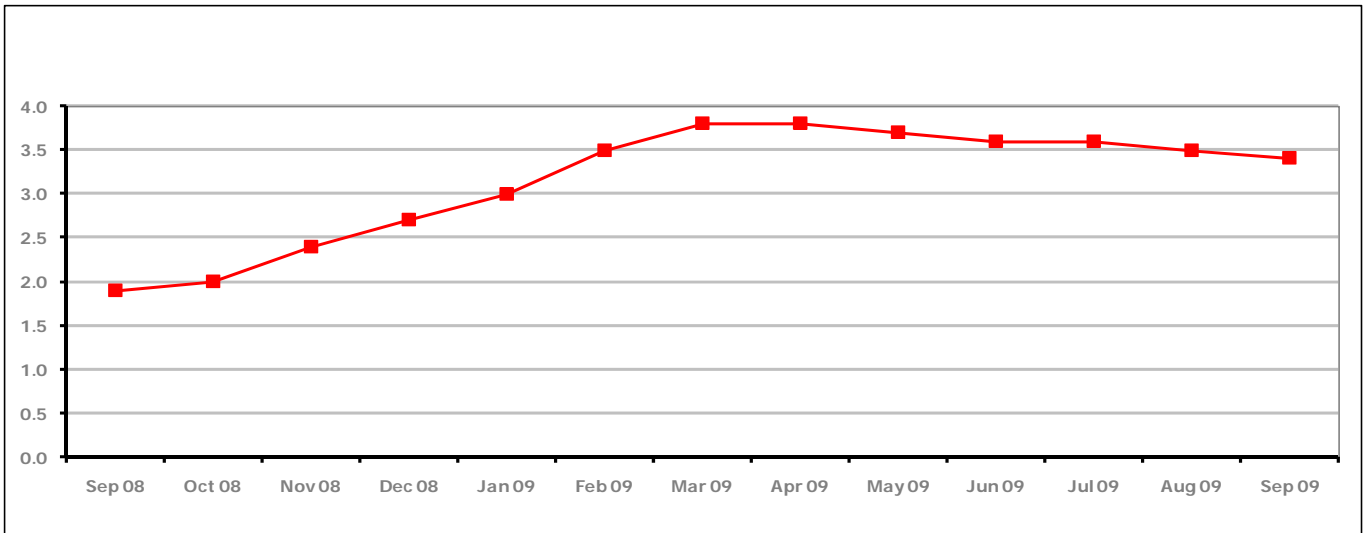


Figure 10 shows the claimant rate in the Forest of Dean in September 2009 amounting to 3.4% is continuing the downward trend shown since April 2009.

Figure 11: Forest of Dean District claimants - Month on Month and Year on Year change

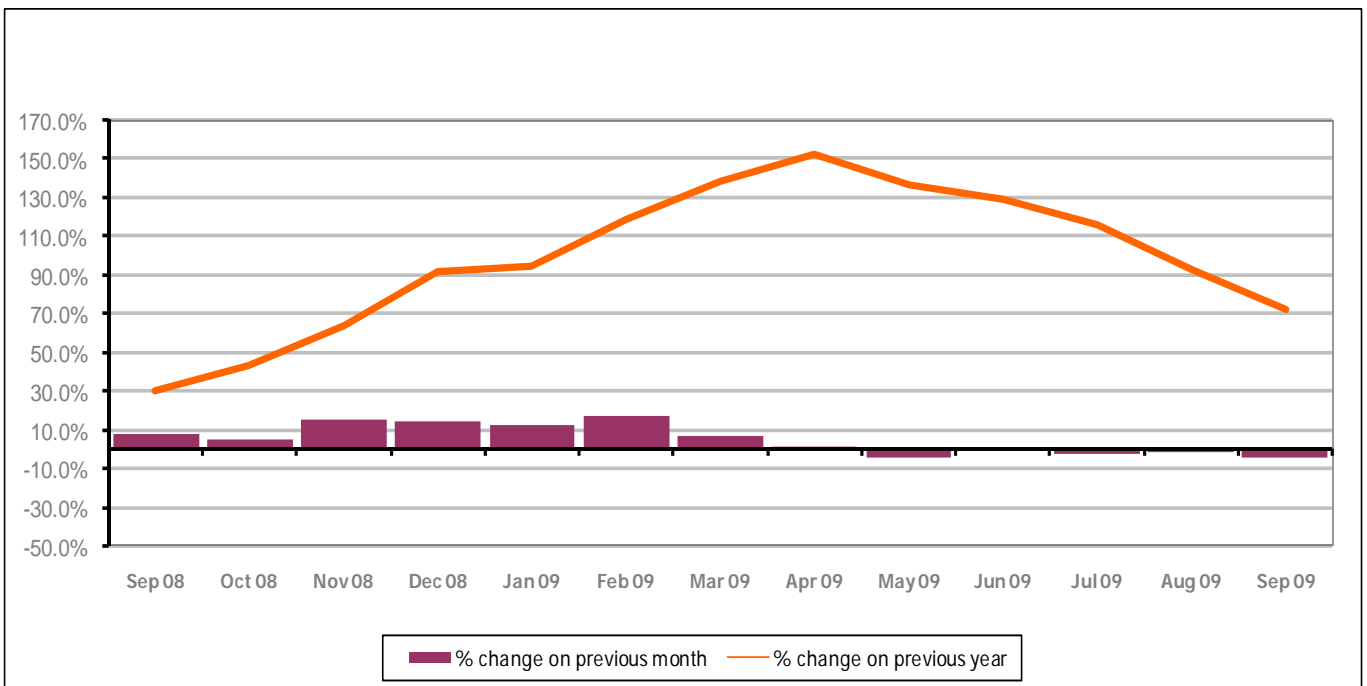


Figure 11 shows the claimant count decreased by 4.1% since the previous month. The change on the previous year has also decreased between September 2009 and August 2009 to 72.4%.

PART 4: LOCAL AUTHORITY DISTRICT AND WARD ANALYSIS

4.3 Forest of Dean District continued...

Figure 12: Claimant rates across Forest of Dean District wards - September 2009

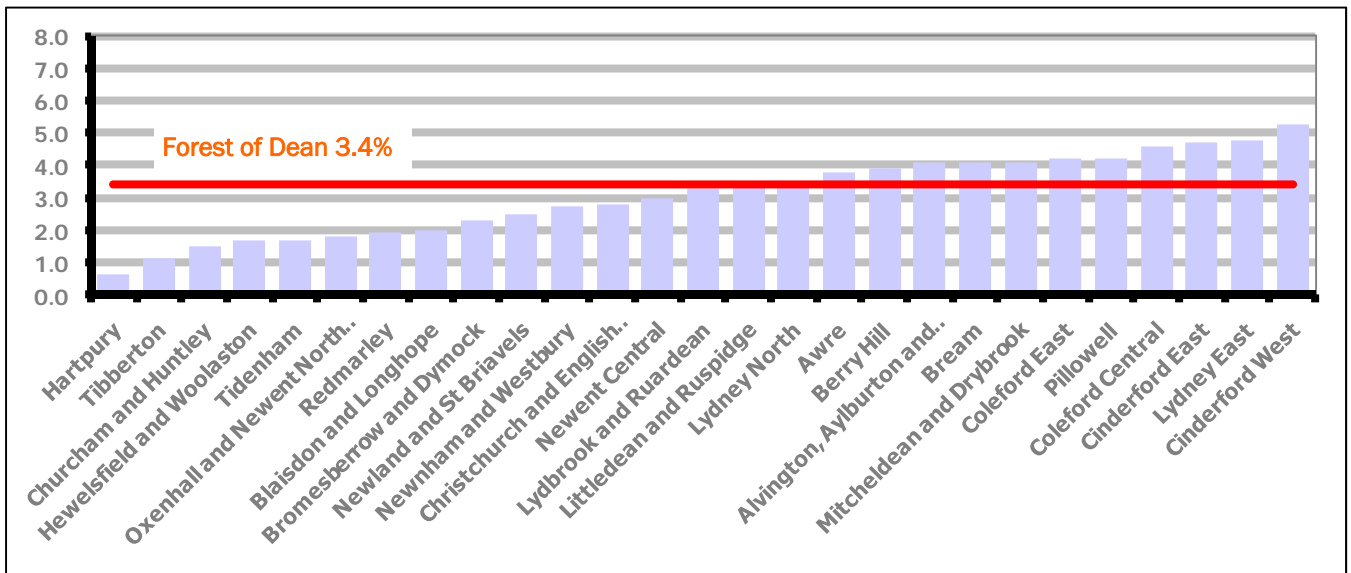
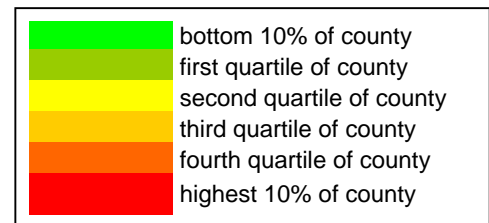


Figure 12 shows the claimant rates for Forest of Dean District wards. The red line represents the average claimant rate across the District of 3.4%. Eleven wards lie above the average.

Table 7: Analysis of Claimant Count at Forest of Dean District ward level - September 2009

District	Ward	Rate	Rank*
Forest	Hartपुर	0.6	1
Forest	Tibberton	1.1	3
Forest	Churcham and Huntley	1.5	10
Forest	Hewelsfield and Woolaston	1.7	17
Forest	Tidenham	1.7	17
Forest	Oxenhall and Newent North East	1.8	22
Forest	Redmarley	1.9	28
Forest	Blaisdon and Longhope	2.0	34
Forest	Bromesberrow and Dymock	2.3	49
Forest	Newland and St Briavels	2.5	58
Forest	Newnham and Westbury	2.7	67
Forest	Christchurch and English Bicknor	2.8	73
Forest	Newent Central	3.0	77
Forest	Lydbrook and Ruardean	3.3	92
Forest	Littledean and Ruspidge	3.4	94
Forest	Lydney North	3.4	94
Forest	Awre	3.8	101
Forest	Berry Hill	3.9	104
Forest	Alvington, Aylburton and West Lydney	4.1	108
Forest	Bream	4.1	108
Forest	Mitcheldean and Drybrook	4.1	108
Forest	Coleford East	4.2	111
Forest	Pillowell	4.2	111
Forest	Coleford Central	4.6	118
Forest	Cinderford East	4.7	120
Forest	Lydney East	4.8	122
Forest	Cinderford West	5.3	128



* 1 = "best" and 142 = "worst"

Table 7 shows overall claimant rates for the Forest of Dean District wards and their position relative to all wards in Gloucestershire.

PART 4: LOCAL AUTHORITY DISTRICT AND WARD ANALYSIS

4.4 Gloucester City

Claimant Rate and Claimant Count

Figure 13: Gloucester City claimant rate over the last year

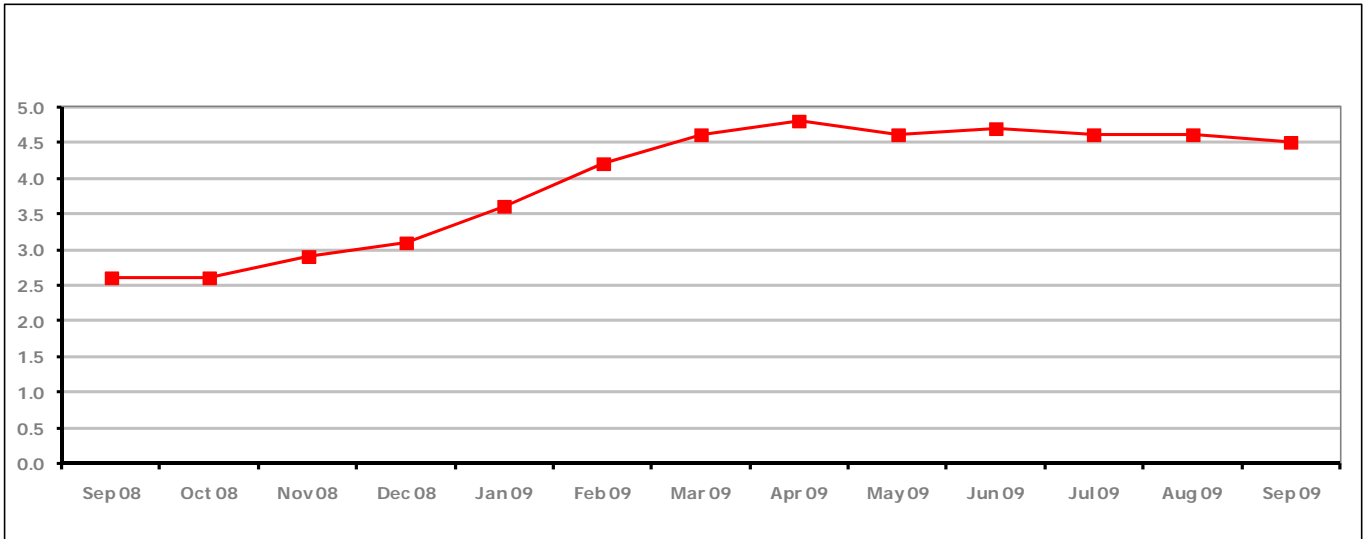


Figure 13 shows the claimant rate for Gloucester City declined in September 2009 at 4.5%.

Figure 14: Gloucester City claimants - Month on Month and Year on Year change

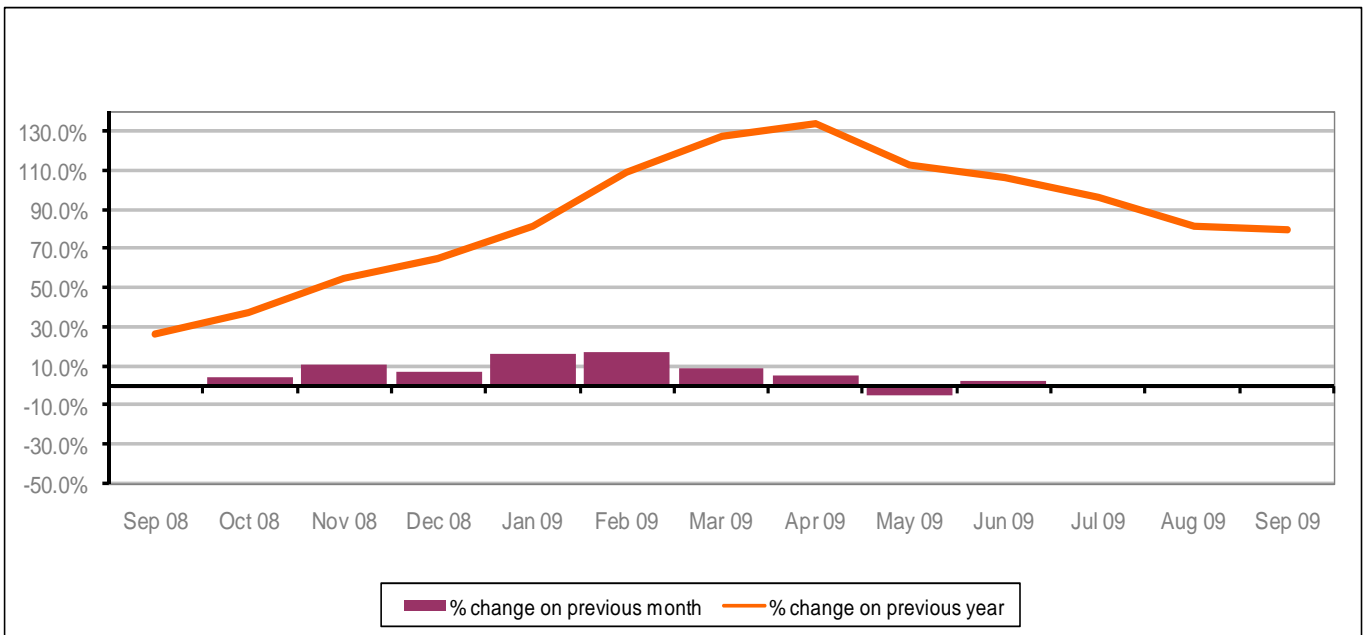


Figure 14 shows the monthly claimant count decreased by 1.4% since August 2009. The change on the previous year has also decreased between August 2009 and September 2009 to 80%.

PART 4: LOCAL AUTHORITY DISTRICT AND WARD ANALYSIS

4.4 Gloucester City continued...

Figure 15: Claimant rates across Gloucester City wards - September 2009

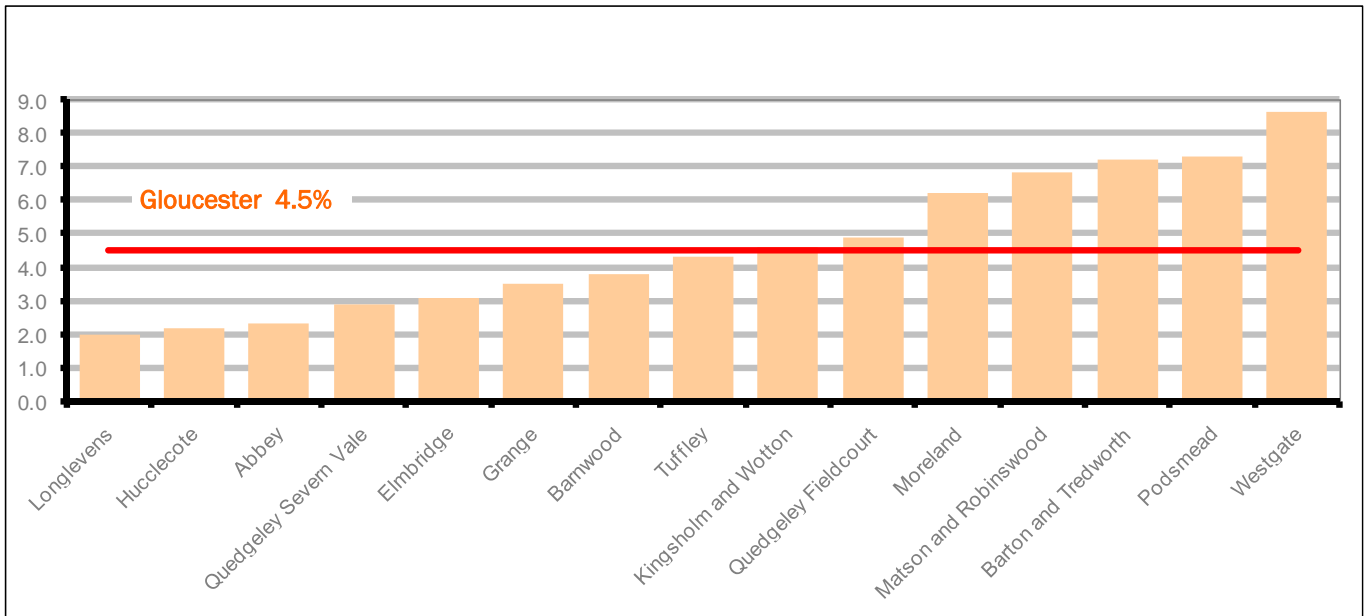
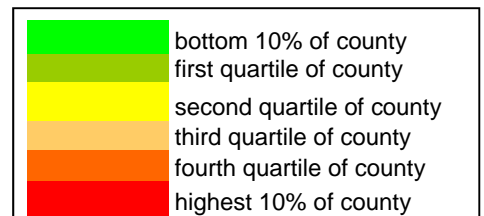


Figure 15 shows the claimant rates for Gloucester City district wards. The red line represents the average claimant rate across the City of 4.5%. Seven wards lie above the average.

Table 8: Analysis of Claimant Count at Gloucester City ward level - September 2009

District	Ward	Rate	Rank*
Gloucester	Longlevens	2.0	34
Gloucester	Hucclecote	2.2	43
Gloucester	Abbey	2.3	49
Gloucester	Quedgeley Severn Vale	2.9	76
Gloucester	Elmbridge	3.1	84
Gloucester	Grange	3.5	97
Gloucester	Barnwood	3.8	101
Gloucester	Tuffley	4.3	114
Gloucester	Kingsholm and Wotton	4.6	118
Gloucester	Quedgeley Fieldcourt	4.9	124
Gloucester	Moreland	6.2	135
Gloucester	Matson and Robinswood	6.8	136
Gloucester	Barton and Tredworth	7.2	137
Gloucester	Podsmead	7.3	138
Gloucester	Westgate	8.6	141



* 1 = "best" and 142 = "worst"

Table 8 shows overall claimant rates for Gloucester City wards and their position relative to all wards in Gloucestershire.

PART 4: LOCAL AUTHORITY DISTRICT AND WARD ANALYSIS

4.5 Stroud District

Claimant Rate and Claimant Count

Figure 16: Stroud District claimant rate over the last year

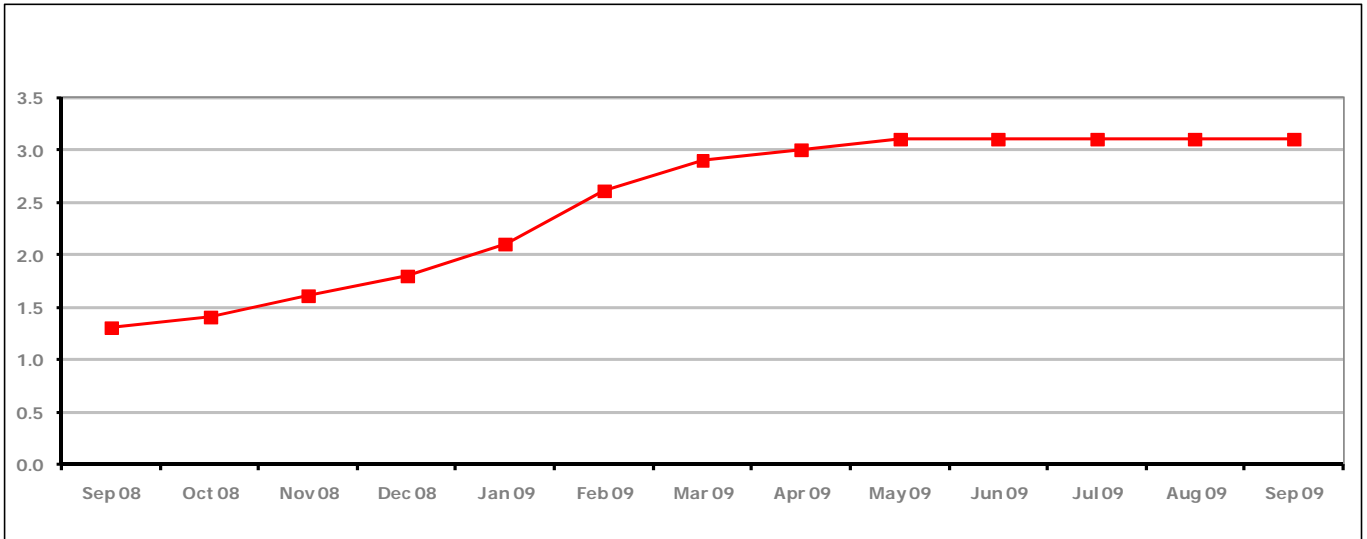


Figure 16 shows the claimant rate for Stroud District remained the same at 3.1%, the highest it has been for over two years.

Figure 17: Stroud District claimants - Month on Month and Year on Year change

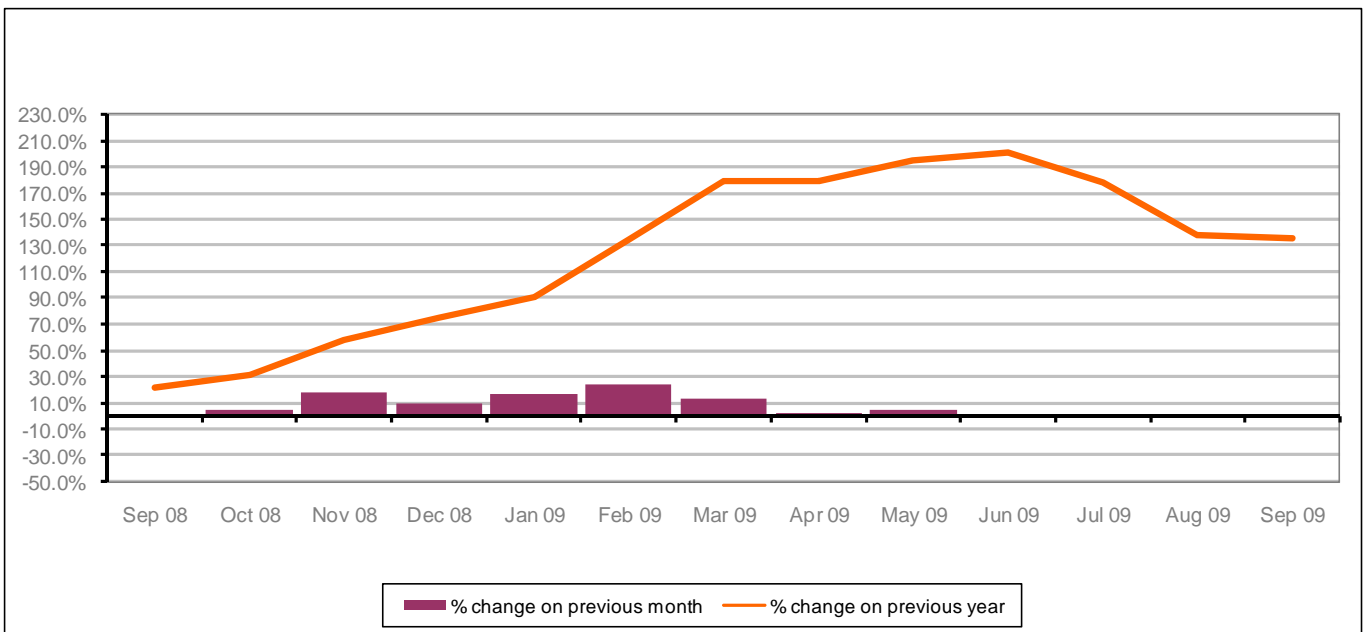


Figure 17 shows the monthly claimant count declined by 0.9% since August 2009. The change on the previous year has decreased between August 2009 and September 2009 to 135.6%.

PART 4: LOCAL AUTHORITY AND DISTRICT ANALYSIS

4.5 Stroud District continued...

Figure 18: Claimant rates across Stroud District wards - September 2009

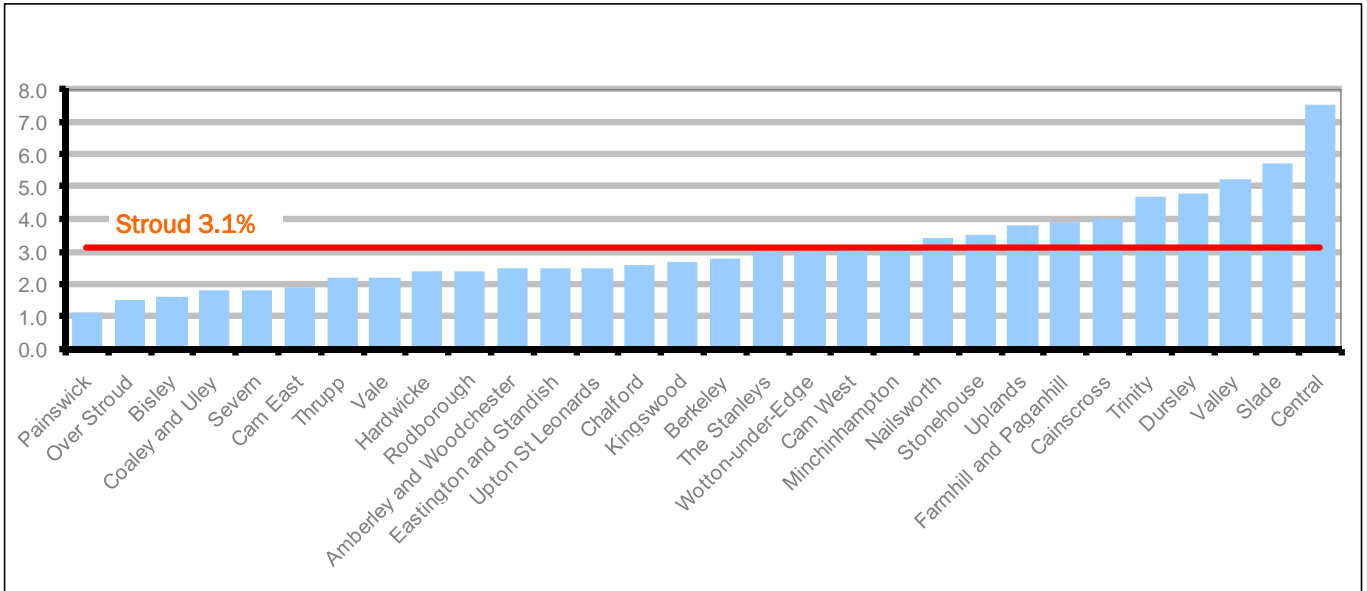
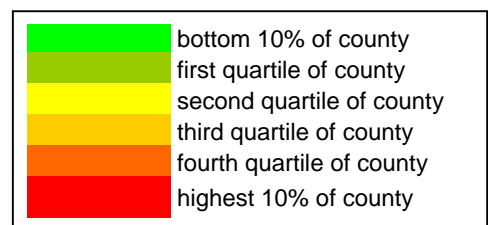


Figure 18 shows the claimant rates in Stroud District wards. The red line represents the average claimant rate across the District of 3.1% and ten wards are above the average.

Table 9: Analysis of Claimant Count at Stroud District ward level - September 2009

District	Ward	Rate	Rank*
Stroud	Painswick	1.1	3
Stroud	Over Stroud	1.5	10
Stroud	Bisley	1.6	14
Stroud	Coaley and Uley	1.8	22
Stroud	Severn	1.8	22
Stroud	Cam East	1.9	28
Stroud	Thrupp	2.2	43
Stroud	Vale	2.2	43
Stroud	Hardwicke	2.4	56
Stroud	Rodborough	2.4	56
Stroud	Amberley and Woodchester	2.5	58
Stroud	Eastington and Standish	2.5	58
Stroud	Upton St Leonards	2.5	58
Stroud	Chalford	2.6	63
Stroud	Kingswood	2.7	67
Stroud	Berkeley	2.8	73
Stroud	The Stanleys	3.0	77
Stroud	Wotton-under-Edge	3.0	77
Stroud	Cam West	3.1	84
Stroud	Minchinhampton	3.1	84
Stroud	Nailsworth	3.4	94
Stroud	Stonehouse	3.5	97
Stroud	Uplands	3.8	101
Stroud	Farmhill and Paganhill	3.9	104
Stroud	Cainscross	4.0	106
Stroud	Trinity	4.7	120
Stroud	Dursley	4.8	122
Stroud	Valley	5.2	126
Stroud	Slade	5.7	131
Stroud	Central	7.5	139



* 1 = "best" and 142 = "worst"

Table 9 shows overall claimant rates for Stroud District wards and their position relative to all wards in Gloucestershire.

PART 4: LOCAL AUTHORITY DISTRICT AND WARD ANALYSIS

4.6 Tewkesbury District

Claimant Rate and Claimant Count

Figure 19: Tewkesbury District claimant rate over the last year

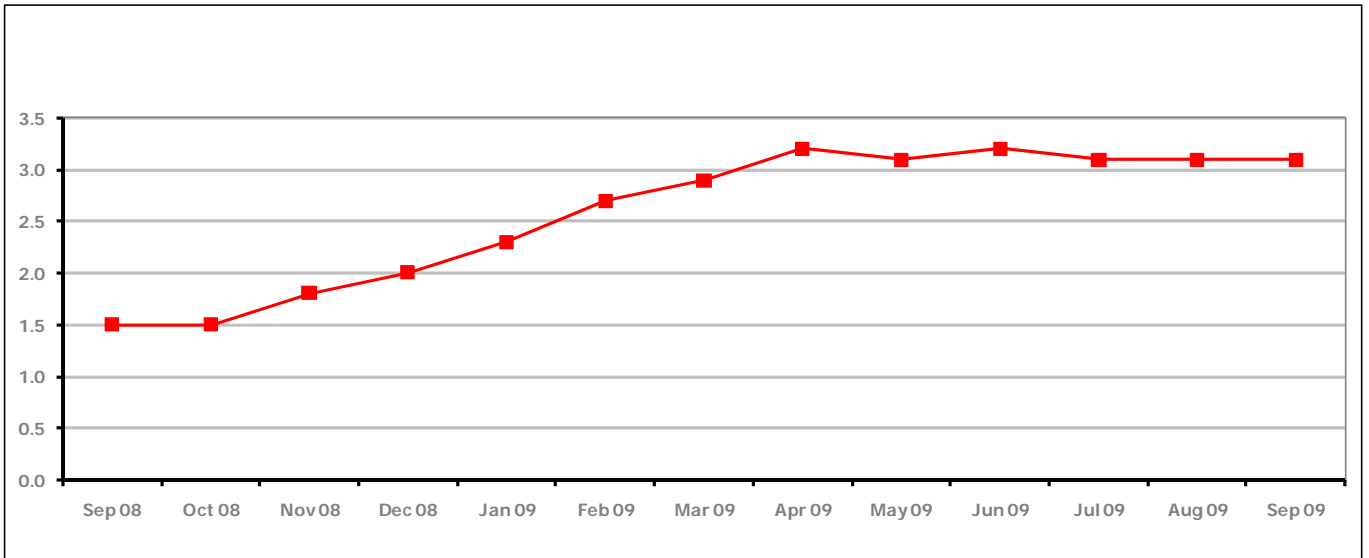


Figure 19 shows the claimant rate for Tewkesbury District remained the same at 3.1% in September 2009. The rate has shown an overall decline since April 2009.

Figure 20: Tewkesbury District claimants - Month on Month and Year on Year change

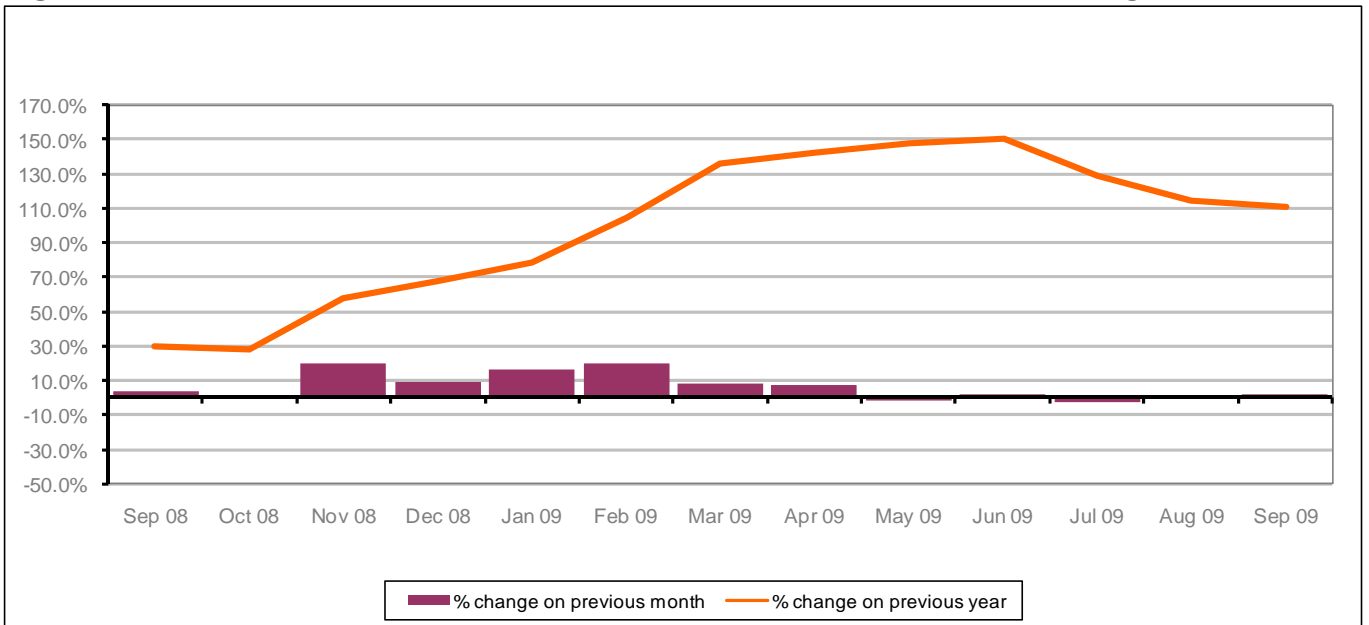


Figure 20 shows that the monthly claimant count increased in September 2009 by 2.3%, the first increase for 2 months. The change on the previous year increased between August 2009 and September 2009 to 110%.

PART 4: LOCAL AUTHORITY AND DISTRICT ANALYSIS

4.6 Tewkesbury District continued...

Figure 21: Claimant rates across Tewkesbury District wards - September 2009

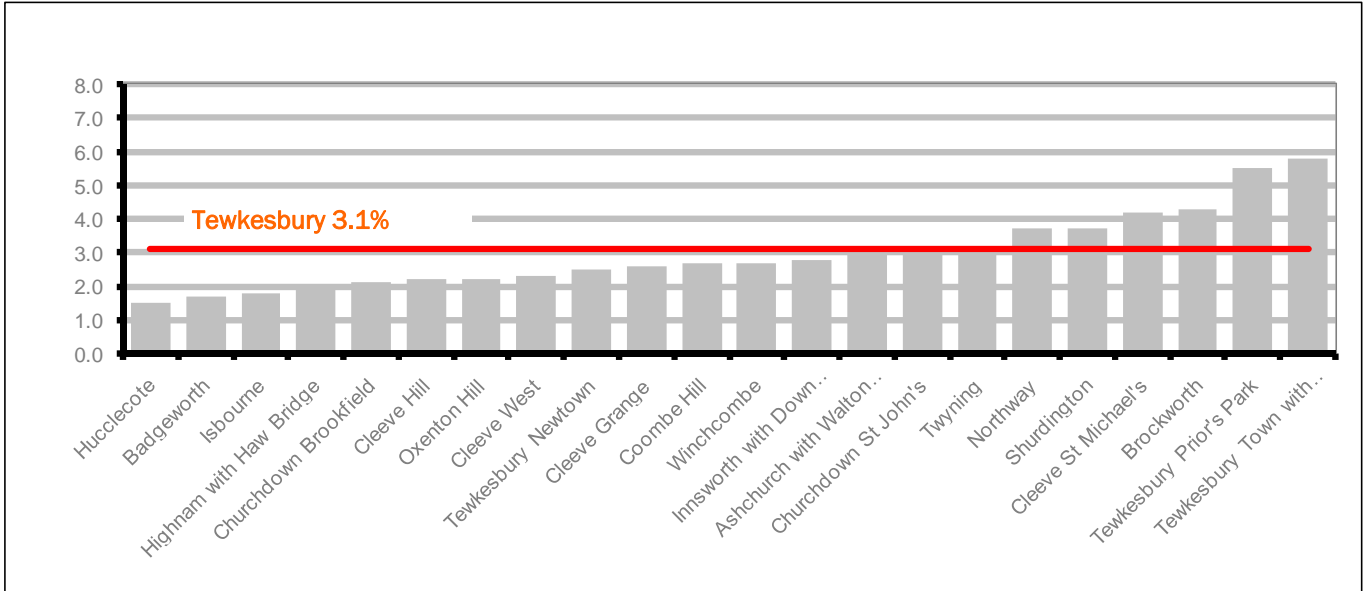
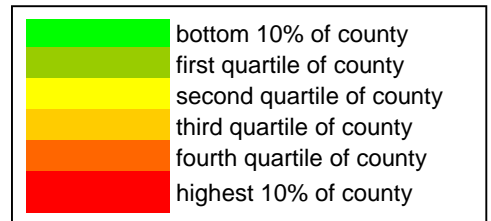


Figure 21 shows the claimant rates in Tewkesbury District wards. The red line represents the average claimant rate across the District of 3.1% and six wards are above the average.

Table 10: Analysis of Claimant Count at Tewkesbury District level - September 2009

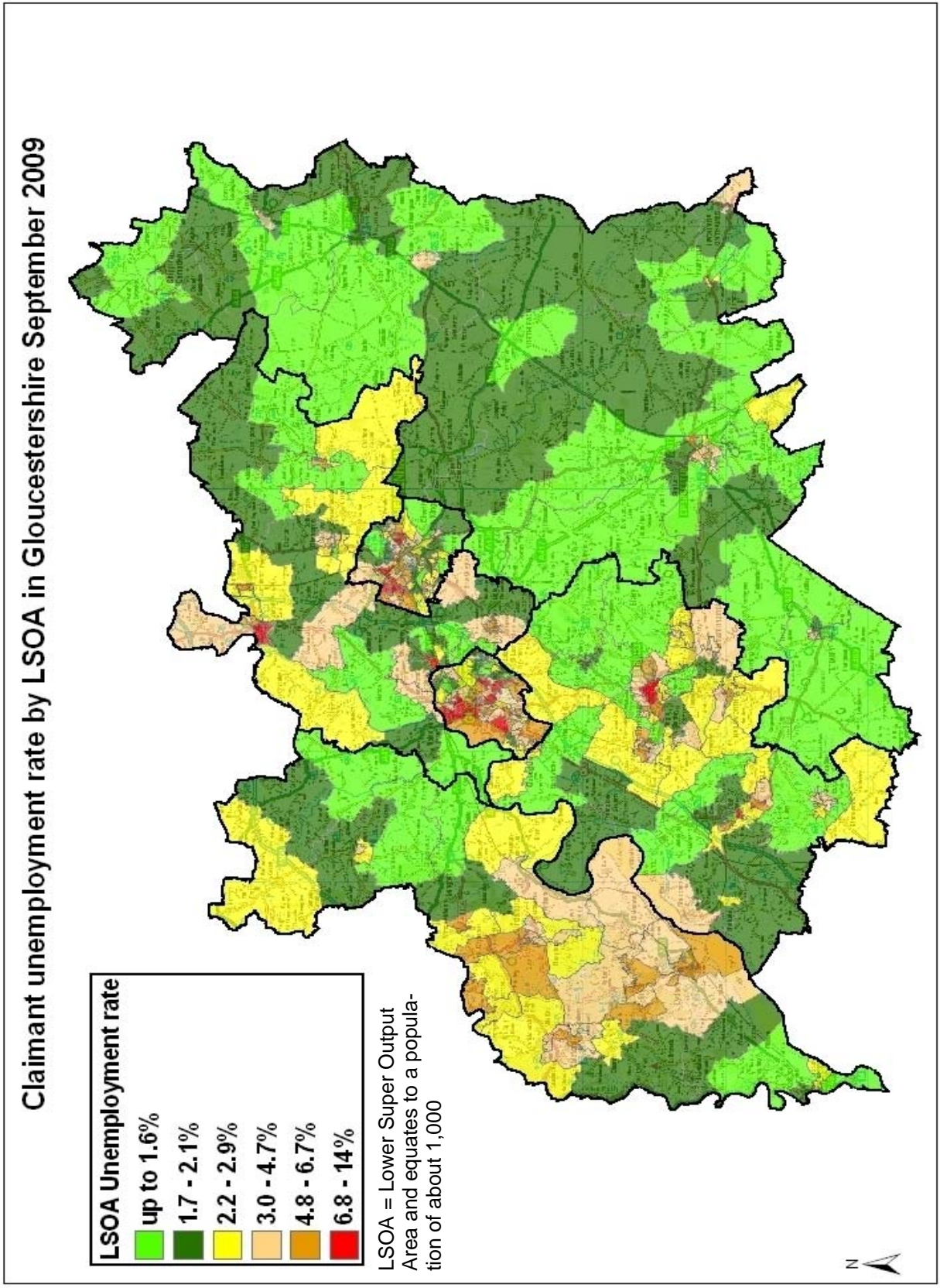
District	Ward	Rate	Rank*
Tewkesbury	Hucclecote	1.5	10
Tewkesbury	Badgeworth	1.7	17
Tewkesbury	Isbourne	1.8	22
Tewkesbury	Highnam with Haw Bridge	2.0	34
Tewkesbury	Churchdown Brookfield	2.1	41
Tewkesbury	Cleeve Hill	2.2	43
Tewkesbury	Oxenton Hill	2.2	43
Tewkesbury	Cleeve West	2.3	49
Tewkesbury	Tewkesbury Newtown	2.5	58
Tewkesbury	Cleeve Grange	2.6	63
Tewkesbury	Coombe Hill	2.7	67
Tewkesbury	Winchcombe	2.7	67
Tewkesbury	Innsworth with Down Hatherley	2.8	73
Tewkesbury	Ashchurch with Walton Cardiff	3.0	77
Tewkesbury	Churchdown St John's	3.0	77
Tewkesbury	Twyning	3.1	84
Tewkesbury	Northway	3.7	99
Tewkesbury	Shurdington	3.7	99
Tewkesbury	Cleeve St Michael's	4.2	111
Tewkesbury	Brockworth	4.3	114
Tewkesbury	Tewkesbury Prior's Park	5.5	129
Tewkesbury	Tewkesbury Town with Mitton	5.8	132



* 1 = "best" and 142 = "worst"

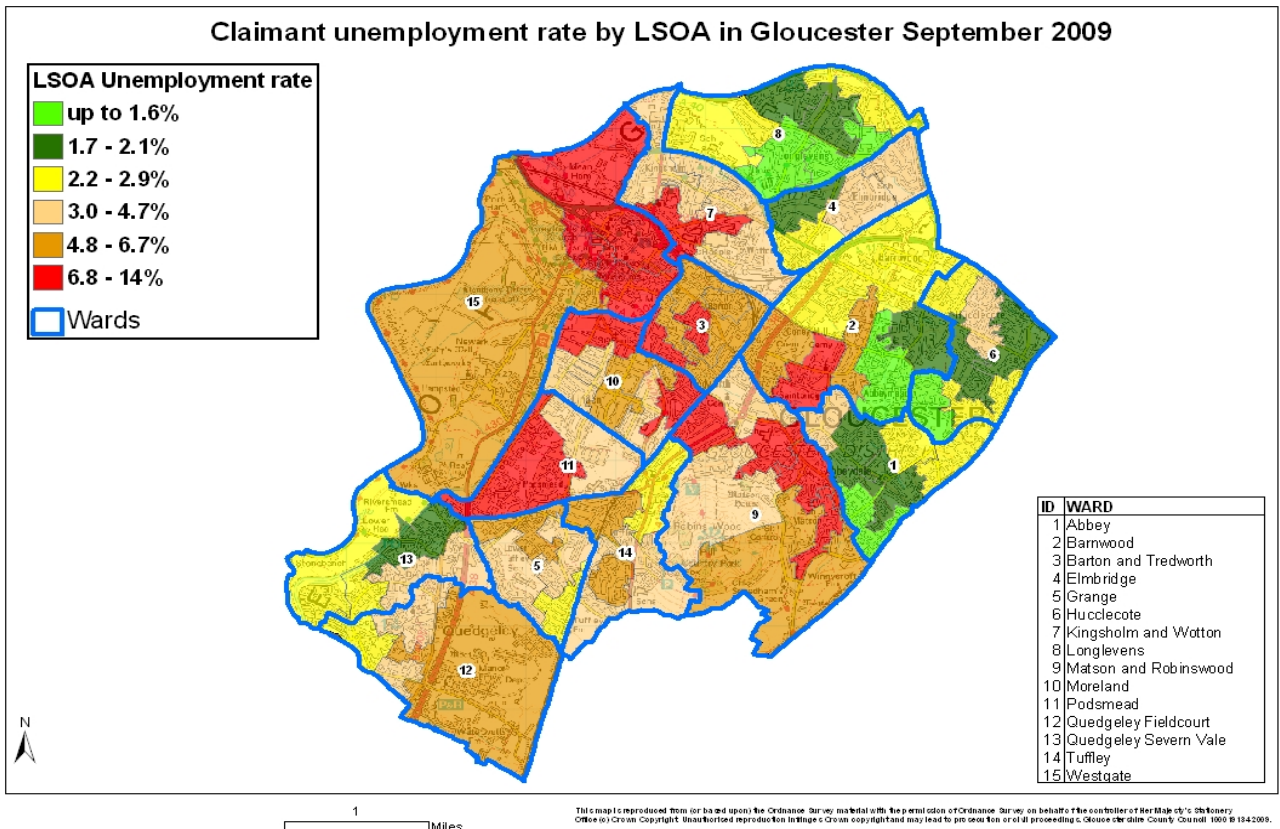
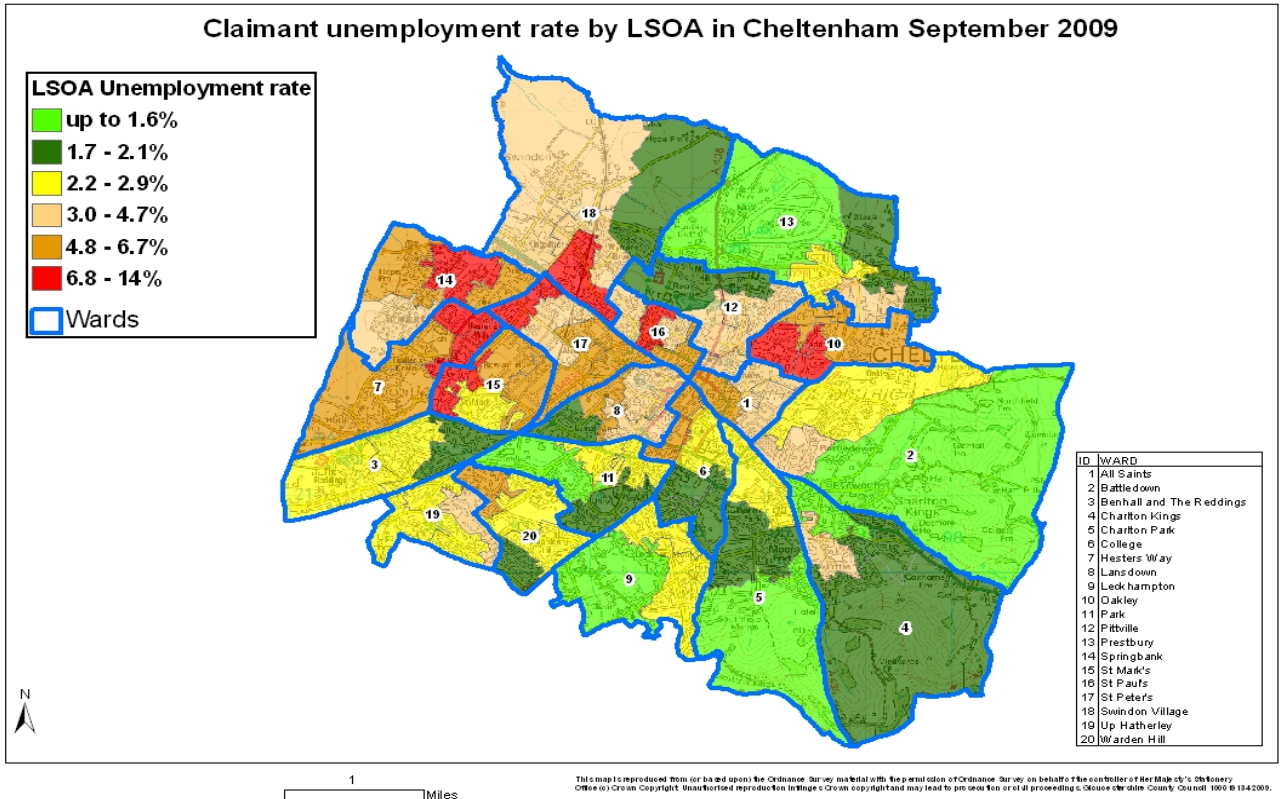
Table 10 shows overall claimant rates for Tewkesbury District wards and their position relative to all wards in Gloucestershire.

PART 5: MAP SHOWING DISTRIBUTION OF CLAIMANT RATE ACROSS GLOUCESTERSHIRE



This map is reproduced from or based upon the Ordnance Survey material with the permission of Ordnance Survey on behalf of the Controller of Her Majesty's Stationery Office (© Crown Copyright). Unauthorised reproduction in any form is prohibited. Ordnance Survey, 1000 St. James Street, London, EC1A 3BB. 1000 St. James Street, London, EC1A 3BB. 1000 St. James Street, London, EC1A 3BB. 1000 St. James Street, London, EC1A 3BB.

PART 5: MAP SHOWING DISTRIBUTION OF CLAIMANT RATE ACROSS GLOUCESTERSHIRE



PART 6: YOUNG PEOPLE NOT IN EDUCATION, EMPLOYMENT OR TRAINING (NEET) IN GLOUCESTERSHIRE

Data provided by Prospects, the Connexions service in Gloucestershire on the situation of young people (16-18) in Gloucestershire who are not in education, employment or formal training.

Connexions Gloucestershire is required to report performance with the 16-18 age range against nationally defined criteria for counting the NEET group. The NEET group includes young people actively seeking education, employment or training as well as those young people who are either not yet ready or who are unable to access these opportunities because of their personal circumstances. The figures quoted below include young people in both of these categories.

Summary

At the end of September 2009 there were 704 young people aged 16-18 not in education, employment or training in Gloucestershire and this figure translates into an adjusted (*) 16-18 NEET population of 4.7%. This figure evidences a 0.2% decrease from the performance achieved at the end of August 09 however this positive figure results from an annual spike in our 16-18 cohort. When looking at actual numbers of young people within the NEET group it should be noted that this has increased from 658 in August to 705 in September. All districts (apart from Cheltenham and Forest) have evidenced an increase in their numbers of 16-18 NEET young people. We have recently received our national NEET comparator data which shows (at the end of August 09) that whilst we remain in the top 2 best performing local authorities in the South West, Gloucestershire has evidenced the largest annual increase in our NEET rate (up 30% from Aug 08 to Aug 09).

Total NEET Group by District Area 30th September 2009

	Cheltenham	Cotswold	Forest	Gloucester	Stroud	Tewkesbury	Total
NEET Group	137	62	77	218	147	63	704(*)
% NEET of total 16-18 cohort	4.4%	2.0%	2.5%	3.9%	4.3%	2.7%	4.7%(*)

NEET Update

As part of our regular tracking procedures Connexions personal advisers contact all young people who have left school or college over the summer months to ensure they receive the support they need to move in further education, employment or training. During October we have contacted 3,500 16-18 yr olds and have found that a number of young people who would have previously found employment opportunities are now unemployed and need support. This has resulted in a large increase in NEET levels which we are forecasting may now reach 1,000 young people by the end of October 09.

Connexions is working closely with key partners within the local authority and the LSC to support this unprecedented increase and has already instigated a series of NEET programmes of support for this group.

If you would like to receive any further information on Gloucestershire's NEET strategy then please contact Andrew.Webster@prospects.co.uk or telephone 01452 426900

(*) Adjustment includes a proportion of young people aged 16-18 whose outcomes are not-known to Connexions Gloucestershire