

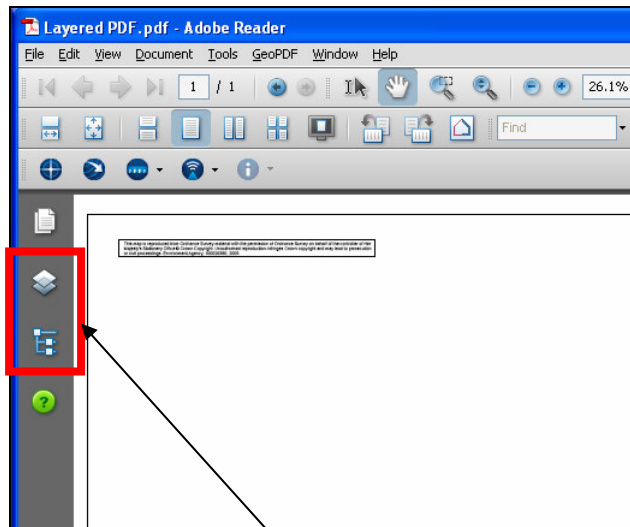
## Technical note

Author :- AJ Bryan

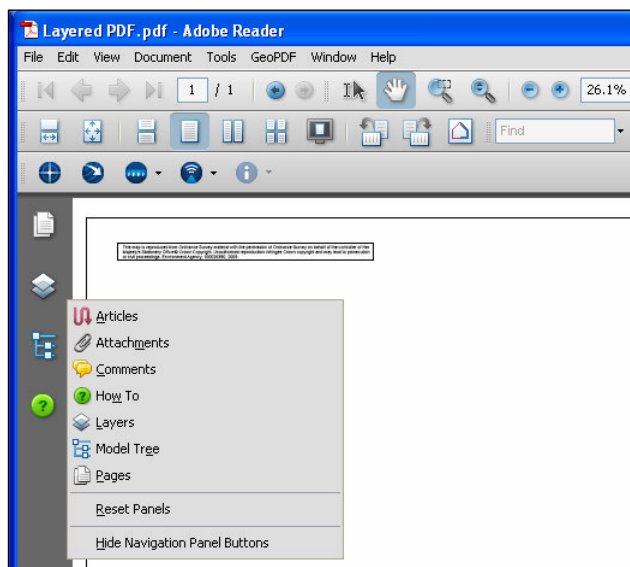
### Using Layered PDFs in Adobe Reader

#### 1. Configuring Adobe

- Open the Layered PDF file in Adobe Reader version 7 or higher.



- Ensure you have the two highlighted icons visible on screen.
- If not, then right click on the grey edge and select the two icons for **Layers & Model Tree**.

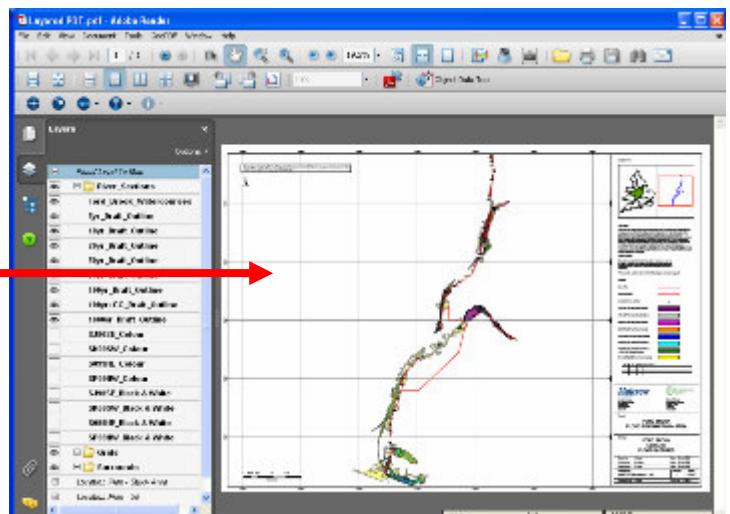
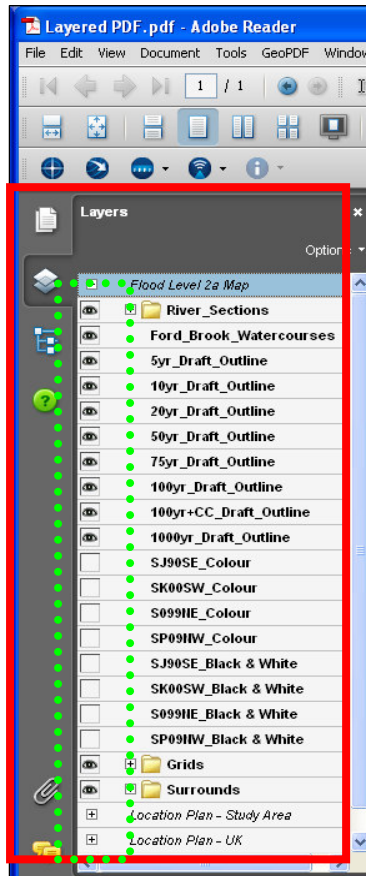


## 2. Using Adobe to View GIS Layers


- Click on the Layer Icon.

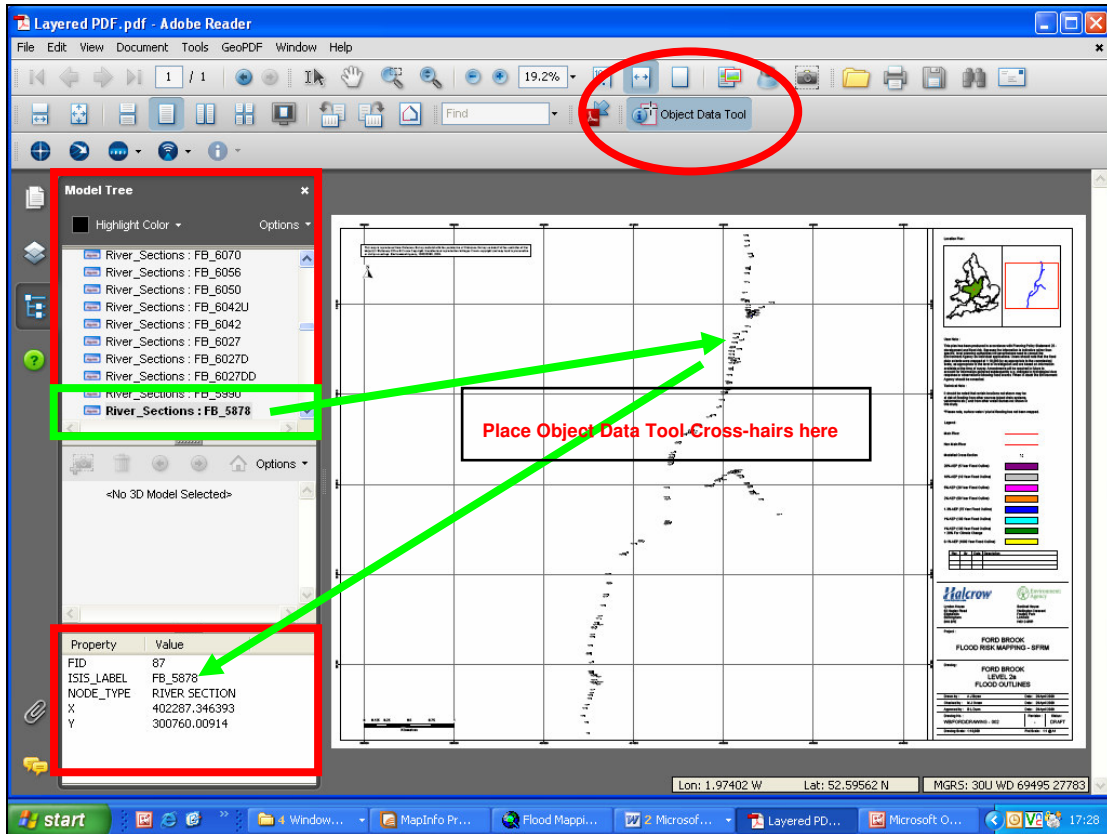


- This will open a “**Layer Control Panel**” on screen allowing the user to switch on / off any of the GIS Layers in the Map Window. Simply click on the “**eye**” **symbol** to control which layers are visible. It is worth practising switching on and off layers to determine which are suitable for the map you want.



## 3. Using Adobe to Access Attributes contained in the GIS Layers

- Ensure you have the **Object Data Tool** located on the Toolbar. 
- If not, then from the menu options at the top of screen, left click on **View > Toolbars > Object Data** and the **Object Data Tool** will appear on the toolbar.
- Switch on the GIS Layers you want by using the Layer Control described above.
- Using the **Object Data Tool**, place the cross-hairs on a point, polyline, or polygon on any of the GIS Layers in the Map Window. If the layer clicked on contains GIS Attribute information, the Left hand pane will change to the Model Tree view.
- The selected layer will be highlighted and the attribute information for that object will be visible in the bottom left pane.
- See image below.



- Additional functionality can be achieved by right clicking on any of the objects listed in the **Model Tree** top left pane.
- From the drop down menu, the user is able to **zoom to selection**, or **select / count** features where similar in style.
- Attribute Information can also be copied to the clipboard.

