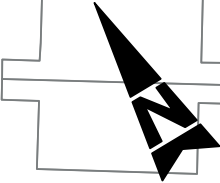


Zone 1

This map is reproduced from (or based on) the Ordnance Survey on behalf of the controller of Her Majesty's Stationery Office © Crown Copyright. Unauthorised reproduction infringes Crown copyright and may lead to prosecution or civil proceedings. Gloucestershire County Council © Crown Copyright and database right 2011. Ordnance Survey 100019134



Two-way general traffic on Albion Street between Beechwood Centre car park/Gloucester Place and St. Johns Avenue

Albion Street / St. Johns Avenue signal junction amended to allow two-way traffic on Albion Street



Existing cycle by-pass reversed to allow cyclists to enter Albion Street westbound

