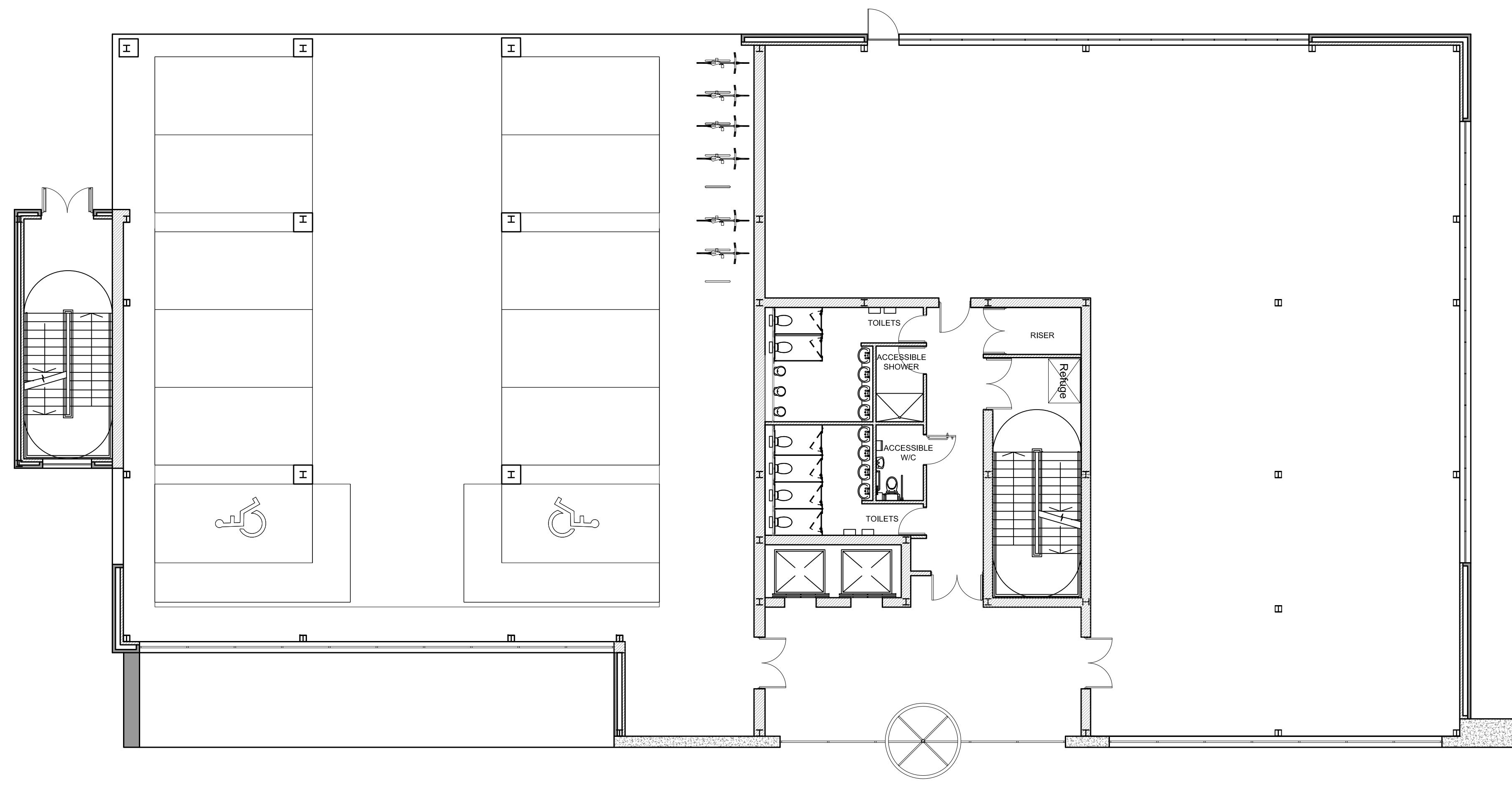
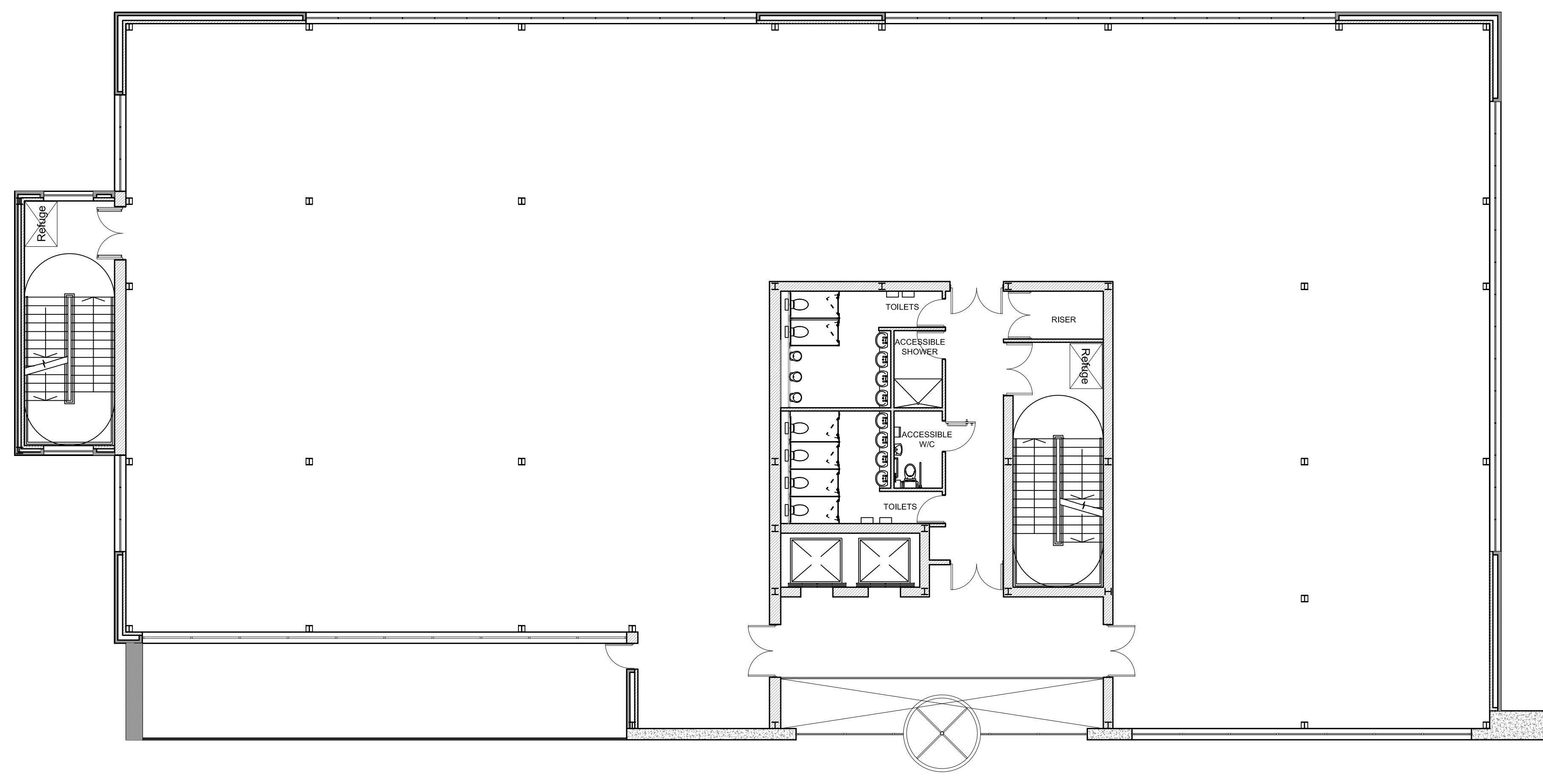


- Preliminary Comment Planning
- Tender Construction Record
- Legal

REVISIONS			
REV	DATE	DESCRIPTION	CHECKED BY
A	16-05-16	-GENERAL DESIGN ALTERATIONS INCLUDING REVISED CLADDING AND GLAZING.	D.W
B	03-05-16	-REVISED UNDERCROFT PARKING LAYOUT. -REVISED GLAZING CONFIGURATION. -UPPER FLOOR BALCONIES INTRODUCED.	D.W
C	18-11-16	-MINOR REVISION, EXTERNAL WALL LOCATION. -REVISED SCHEDULE OF ACCOMMODATION.	D.W
D	07.12.16	-STAIRCASE ALTERATIONS. -FIRE DOOR ALTERATIONS.	D.W
E	11.05.16	-AREA SCHEDULE CORRECTED	D.W



Proposed Ground Floor Plan



Proposed First and Second Floor Plan

AREA SCHEDULE

Ground Floor G.I.A
5,414 SQ FT / 503 SQM
Ground Floor N.I.A
3,648 SQ FT / 339 SQM

First Floor G.I.A
9,558 SQ FT / 888 SQM
First Floor N.I.A
7890 SQ FT / 733 SQM

Second Floor G.I.A
9,558 SQ FT / 888 SQM
Second Floor N.I.A
7890 SQ FT / 733 SQM

Total Area
G.I.A 24,530 SQ FT / 2,279 SQM
N.I.A 19,429 SQ FT / 1,805 SQM

CLIENT **HG HINTON GROUP**

PROJECT Grovefield Way
Cheltenham

TITLE Proposed Office 1 Floor Plans

SCALE @ A1 1:100 DATE 21-04-16

DRAWING 178-19 REV E

DRAWN BY R.D CHECKED BY D.W

