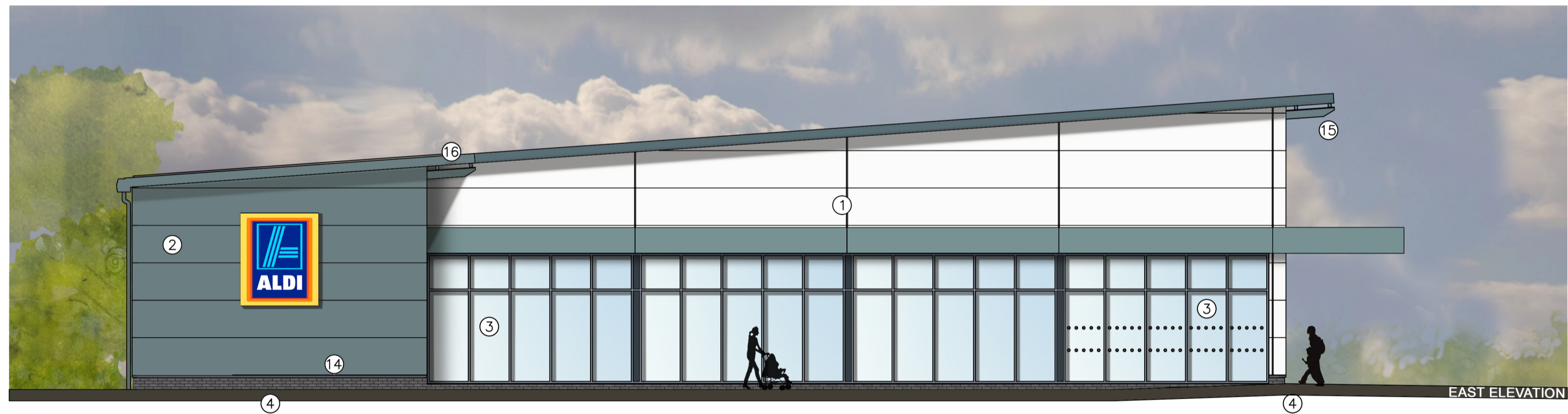


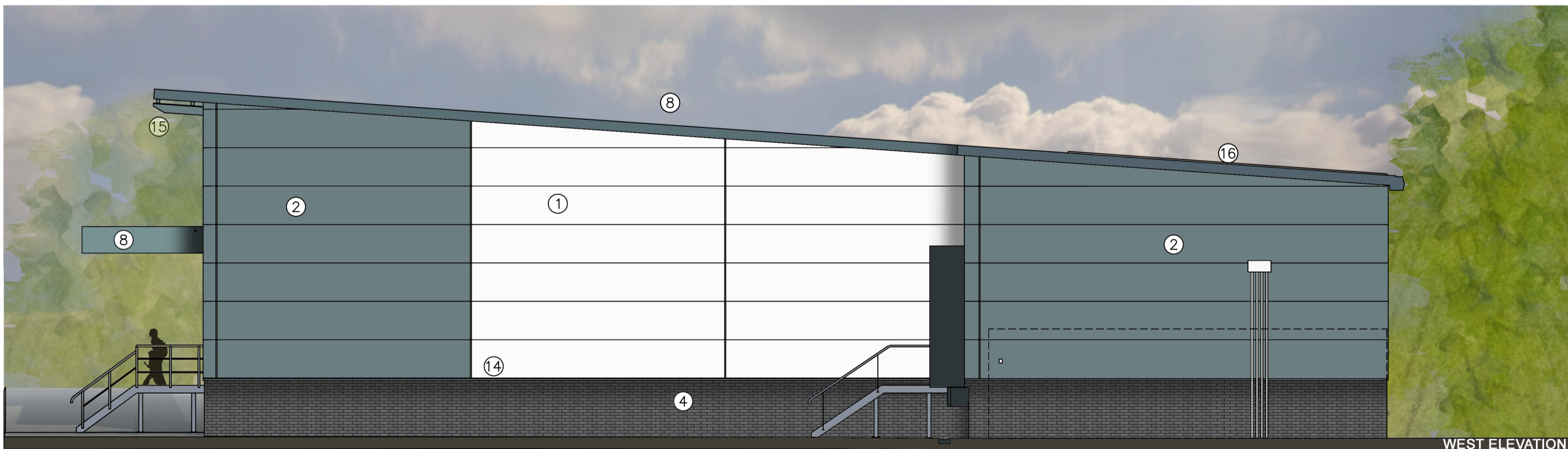
NORTH ELEVATION



SOUTH ELEVATION



EAST ELEVATION



WEST ELEVATION

© This drawing/disk and the works depicted are the copyright of Design Development Partnership Ltd and may not be reproduced or amended except by written permission. No liability will be accepted for amendments made by other persons.

All drawings and specification to be read in conjunction with Structural Engineer and other consultants drawings; all discrepancies should be reported to the architect.

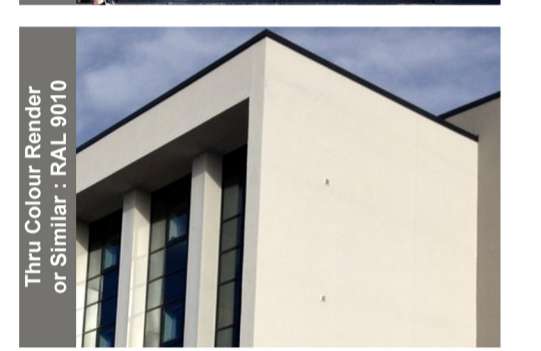
Figured dimensions only are to be taken from this drawing

Landscaping indicative only.

Please refer to detailed landscape design.

- Preliminary Comment Planning
 Tender Construction Record
 Legal

REVISIONS			
REV	DATE	DESCRIPTION	CHECKED BY
A	31.08.16	-REVISED BUILDING DESIGN.	D.W
B	21.09.16	-DOOR DES REVISD / REVISED EXTERNAL STAIRCASE DESIGN. -REVISED GLAZING DESIGN.	D.W
C	15.09.16	-UPDATED PRESENTATION STYLE.	D.W
D	05.12.16	-REVISED PRESENTATION STYLE.	L.T
E	14.03.17	-REVISED ENTRANCE DESIGN. -REVISED PLANT LOCATION. -GENERAL MINOR AMENDMENTS.	D.W
F	20.06.17	-REVISED PRESENTATION STYLE.	L.T



PROPOSED EXTERNAL FINISHES

- 1 KINGSPAN KS1000MR METALLIC SILVER CLADDING RAL 9006
- 2 KINGSPAN KS1000MR ANTHRACITE GREY CLADDING RAL 7016
- 3 SHOPFRONTS - POLYESTER POWDER COATED ALUMINIUM (RAL 7016)
- 4 BLOCKLEYS BRICK LTD. 'CHARCOAL' BRICKWORK WITH TARMAC Y14 (BLACK) COLOURED MORTAR
- 5 ENTRANCE - POLYESTER POWDER COATED ALUMINIUM (RAL 7016 ANTHRACITE)
- 6 STEEL ESCAPE DOORS - POLYESTER POWDER COATED COLOUR GREY (RAL 7016) (FRAME COLOUR RAL 7016).
- 7 WINDOWS - POLYESTER POWDER COATED ALUMINIUM (RAL 7016).
- 8 FASCIAS - POWDER COATED ALUMINIUM TO BS6496, COLOUR ANTHRACITE GREY (RAL 7016). (JOINTS TO MATCH HALF GRID SPACING ON ENTRANCE ELEVATION AND SHOPFRONTS ELEVATIONS.
- 9 RAINWATER GOODS POLYESTER POWDER COATED ALUMINIUM (RAL 7016).
- 10 KINGSPAN KS 1000 RW 80MM THICK TRAPEZOIDAL COMPOSITE PANELS ON PURLINS. ALL TO ACHIEVE MIN U-VALUE OF 0.25W/MK COLOUR TO BE ANTHRACITE GREY RAL 7016.
- 11 SECTIONAL OVERHEAD DOOR - PVF COATED STEEL (RAL 7016).
- 12 TROLLEY BAY RAILS - SATIN FINISH STAINLESS STEEL.
- 13 HANDRAILS - GALVANISED TUBULAR STEEL
- 14 PVF2 COATED ALUMINIUM PRESSED DRIP FLASHING. COLOUR METALIC SILVER RAL 9006.
- 15 ALL EXPOSED STEELWORK TO BE PAINTED STEELGUARD Z44 FINISH COAT TO BE GLOSS FINISH RAL 7016 ANTHRACITE GREY.
- 16 THROUGH COLOUR RENDER K-REND OR SIMILAR APPROVED - COLOUR : WHITE RAL 9010
- 17 SOLAR (PHOTOVOLTAIC) PANELS: LOW REFLECTION ROOF-MOUNTED SYSTEM 60-CELL MONOCRYSTALLINEPHOTOVOLTAIC MODULES BY AXITEC REF AXI PREMIUM AC-250M/156-60S. PANEL REFERENCE - AC-250M/156-60S
- 18 HANDRAILS - GALVANISED TUBULAR STEEL TO BE PAINTED 7016 ANTHRACITE GREY.

NOTE: MATERIALS USED WILL BE AS ABOVE OR SIMILAR APPROVED

*SIGNAGE SUBJECT TO SEPARATE APPLICATION

CLIENT **HG HINTON GROUP**

PROJECT Phase 2
Corinthian Park
Grovefield Way
Cheltenham

TITLE Proposed Aldi Elevations

SCALE @ A1 1:100 DATE 21-04-16

DRAWING 178-34 REV F

DRAWN BY R.D CHECKED BY D.W

DDP DESIGN DEVELOPMENT PARTNERSHIP

ARCHITECTURE + PLANNING + PRINCIPAL DESIGNER

A: Reims House, 8 The Croft, Buntsford Drive, Bromsgrove, B60 4JE
T: 01527 571 765
F: 01527 878 207
E: mail@ddpdesign.co.uk
W: www.hintongroup.co.uk