

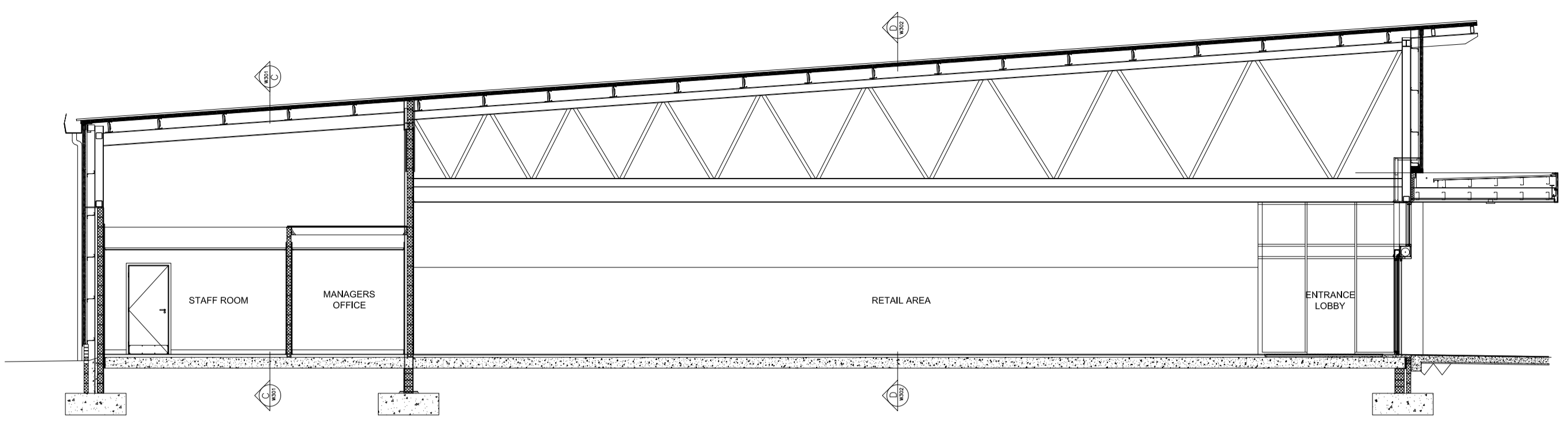
© This drawing/disk and the works depicted are the copyright of Design Development Partnership Ltd and may not be reproduced or amended except by written permission. No liability will be accepted for amendments made by other persons.

All drawings and specification to be read in conjunction with Structural Engineer and other consultants drawings; all discrepancies should be reported to the architect.

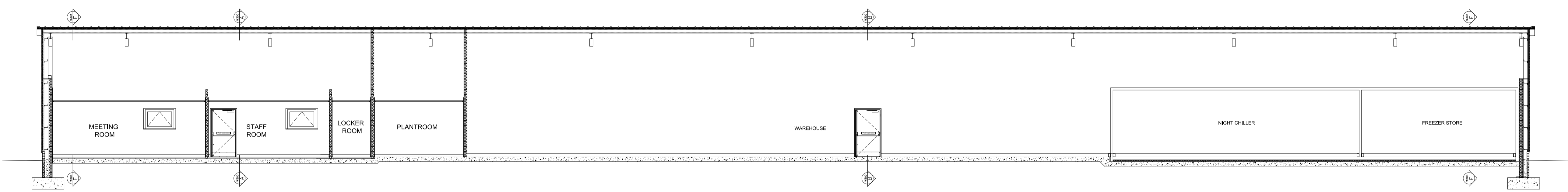
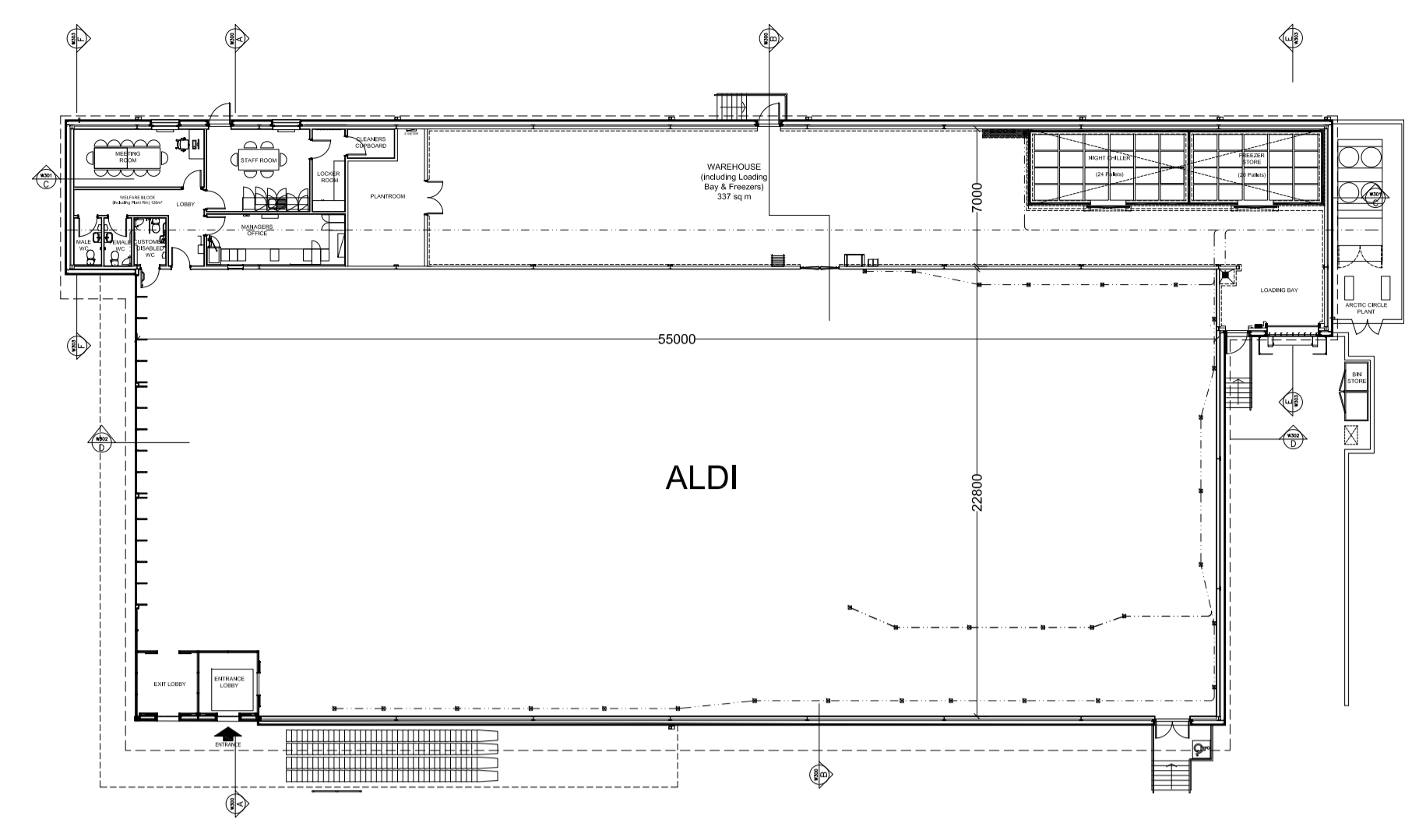
Figured dimensions only are to be taken from this drawing

- Preliminary     Comment     Planning
- Tender     Construction     Record
- Legal

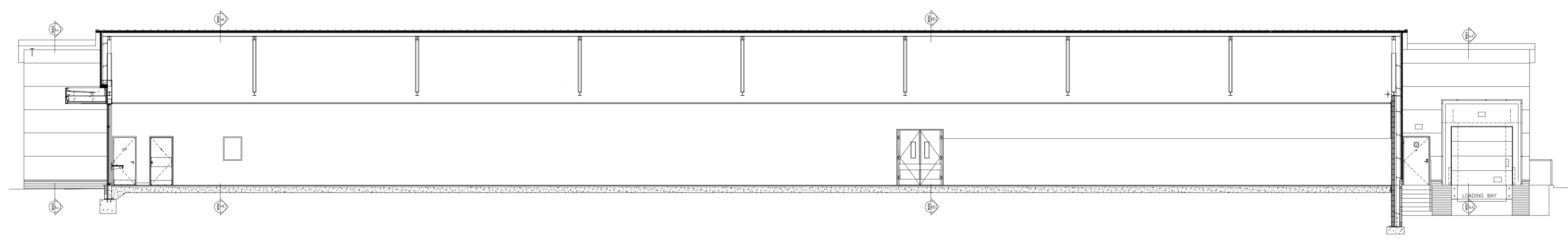
REVISIONS			
REV	DATE	DESCRIPTION	CHECKED BY
A	16.03.17	-REVISED ENTRANCE DESIGN. -REVISED PLANT LOCATION. -GENERAL MINOR AMENDMENTS.	D,W



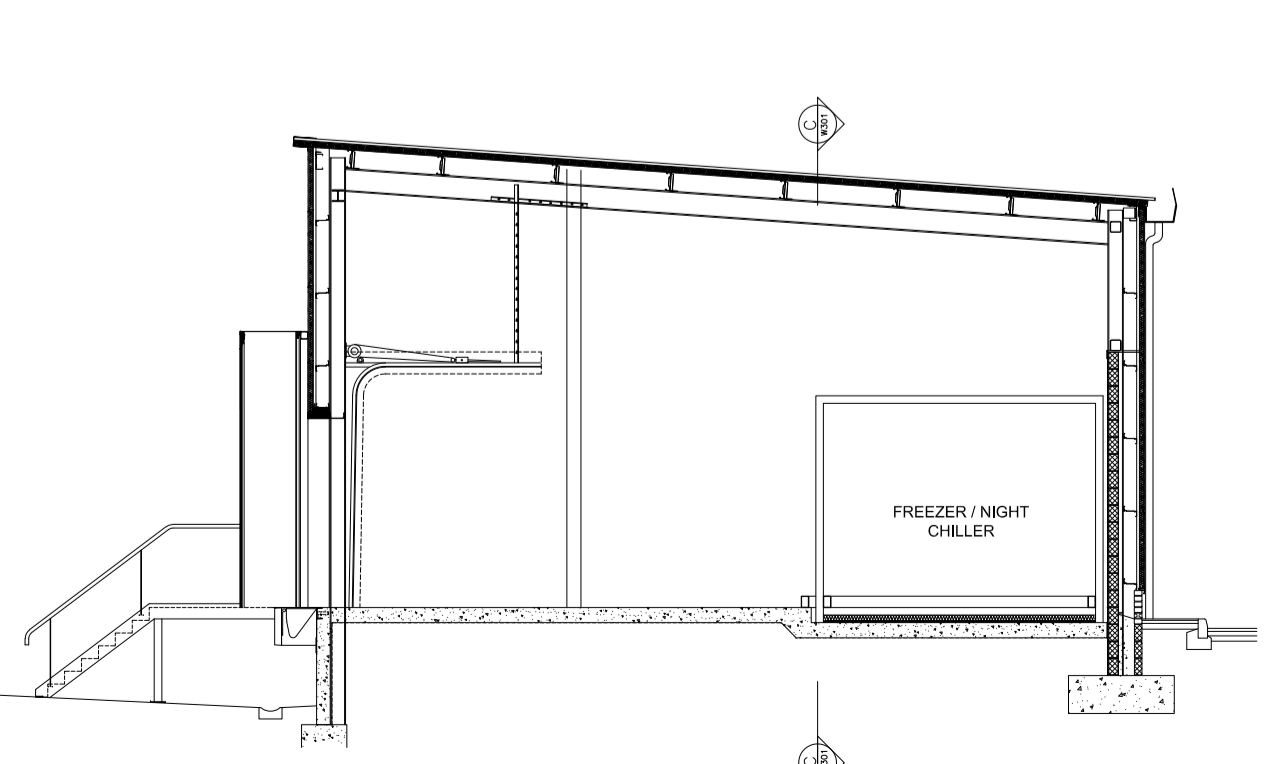
SECTION A - A



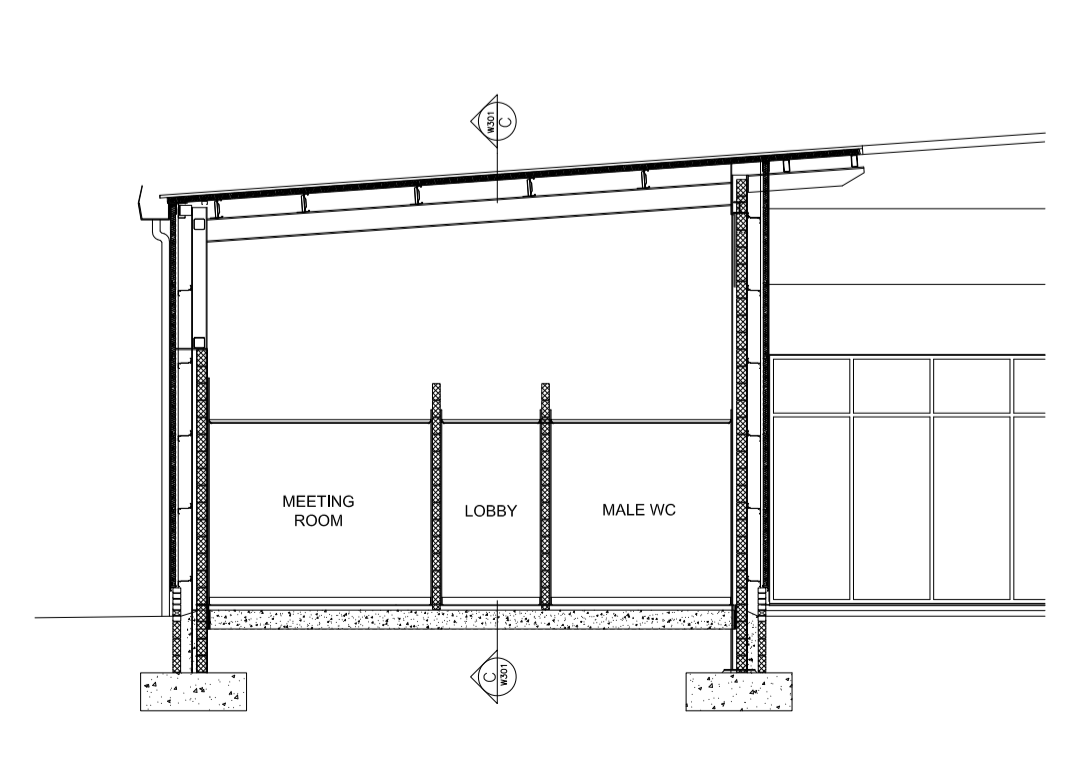
SECTION C - C



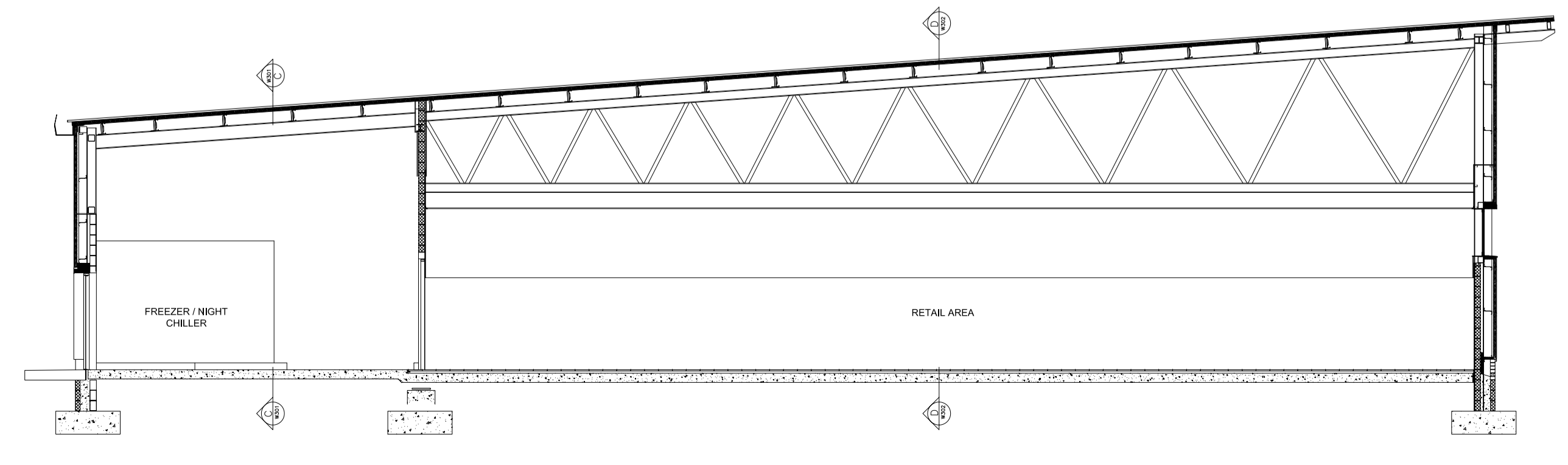
SECTION D - D



SECTION E - E



SECTION F - F



SECTION B - B

CLIENT **HG HINTON GROUP**

PROJECT Phase 2  
Corinthian Park  
Grovefield Way  
Cheltenham

TITLE Proposed Aldi Sections

SCALE @ A1 1:100    DATE 09-11-16

DRAWING 178 - 65    REV A

DRAWN BY R.D    CHECKED BY D.W

**DDP DESIGN DEVELOPMENT PARTNERSHIP**

ARCHITECTURE + PLANNING + PRINCIPAL DESIGNER

A: Reims House, 8 The Croft, Buntsford Drive, Bromsgrove, B60 4JE  
T: 01527 571 765  
F: 01527 878 207  
E: mail@ddpdesign.co.uk  
W: www.hintongroup.co.uk