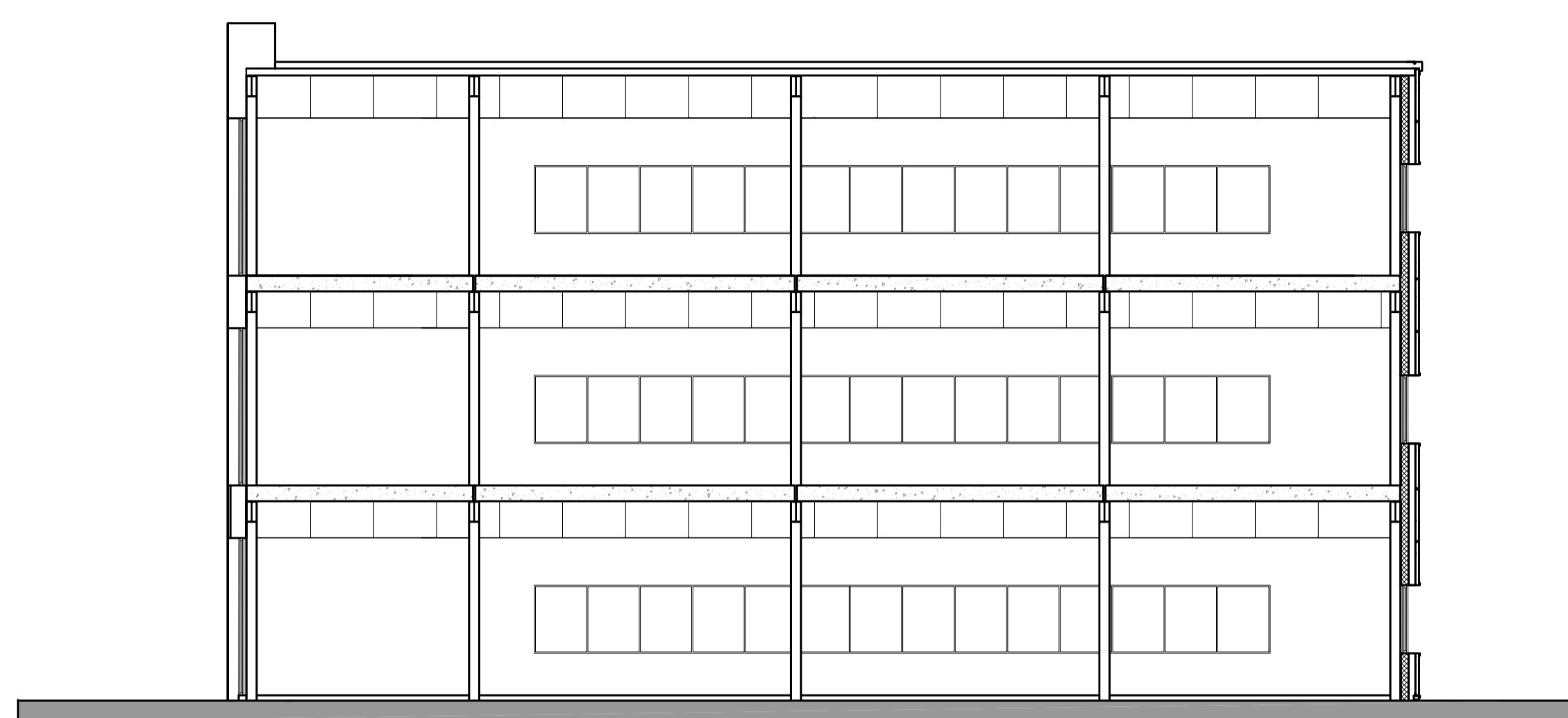
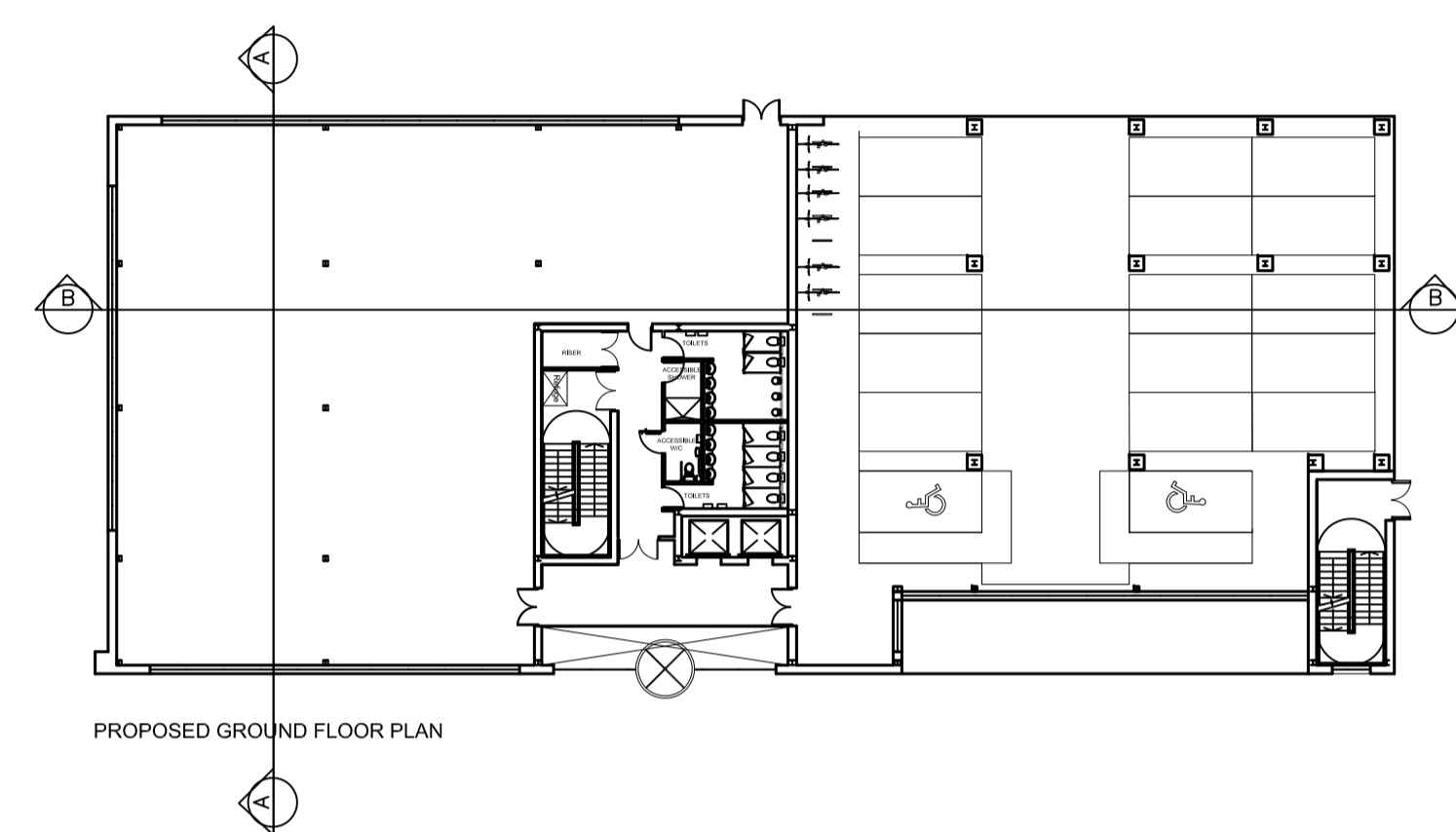


- Preliminary Comment Planning
- Tender Construction Record
- Legal

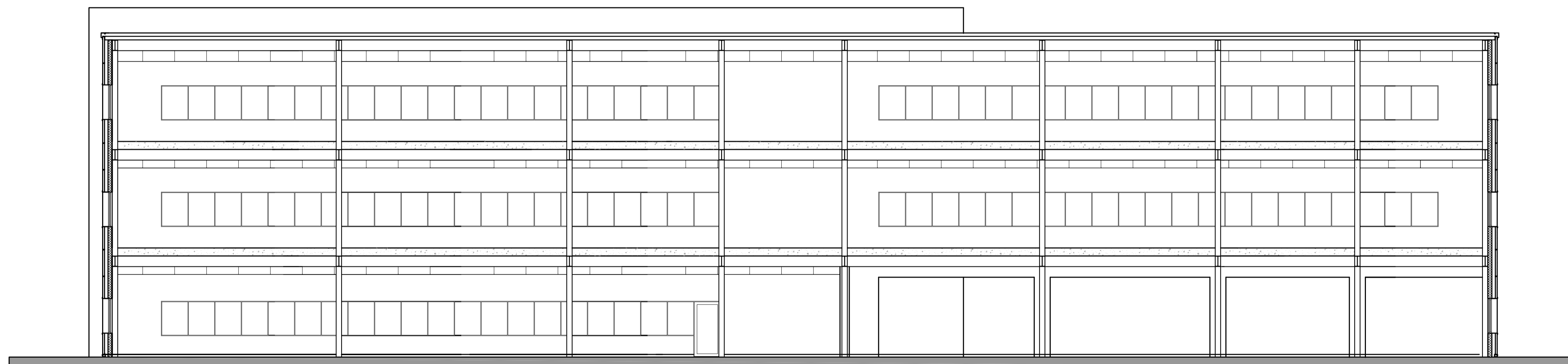
REVISIONS			
REV	DATE	DESCRIPTION	CHECKED BY



Section A-A



PROPOSED GROUND FLOOR PLAN



Section B-B

CLIENT **HP HINTON PROPERTIES**

PROJECT Grovefield Way
Cheltenham

TITLE Proposed Office 2 Sections

SCALE @ A1 1:100 DATE 25-11-16

DRAWING 178-69 REV

DRAWN BY R.D CHECKED BY D.W

DDP DESIGN DEVELOPMENT PARTNERSHIP

ARCHITECTURE + PLANNING + PRINCIPAL DESIGNER

A: Reims House, 8 The Croft, Buntsford Drive, Bromsgrove, B60 4JE
T: 01527 571 765
F: 01527 878 207
E: mail@ddpdesign.co.uk
W: www.hintongroup.co.uk