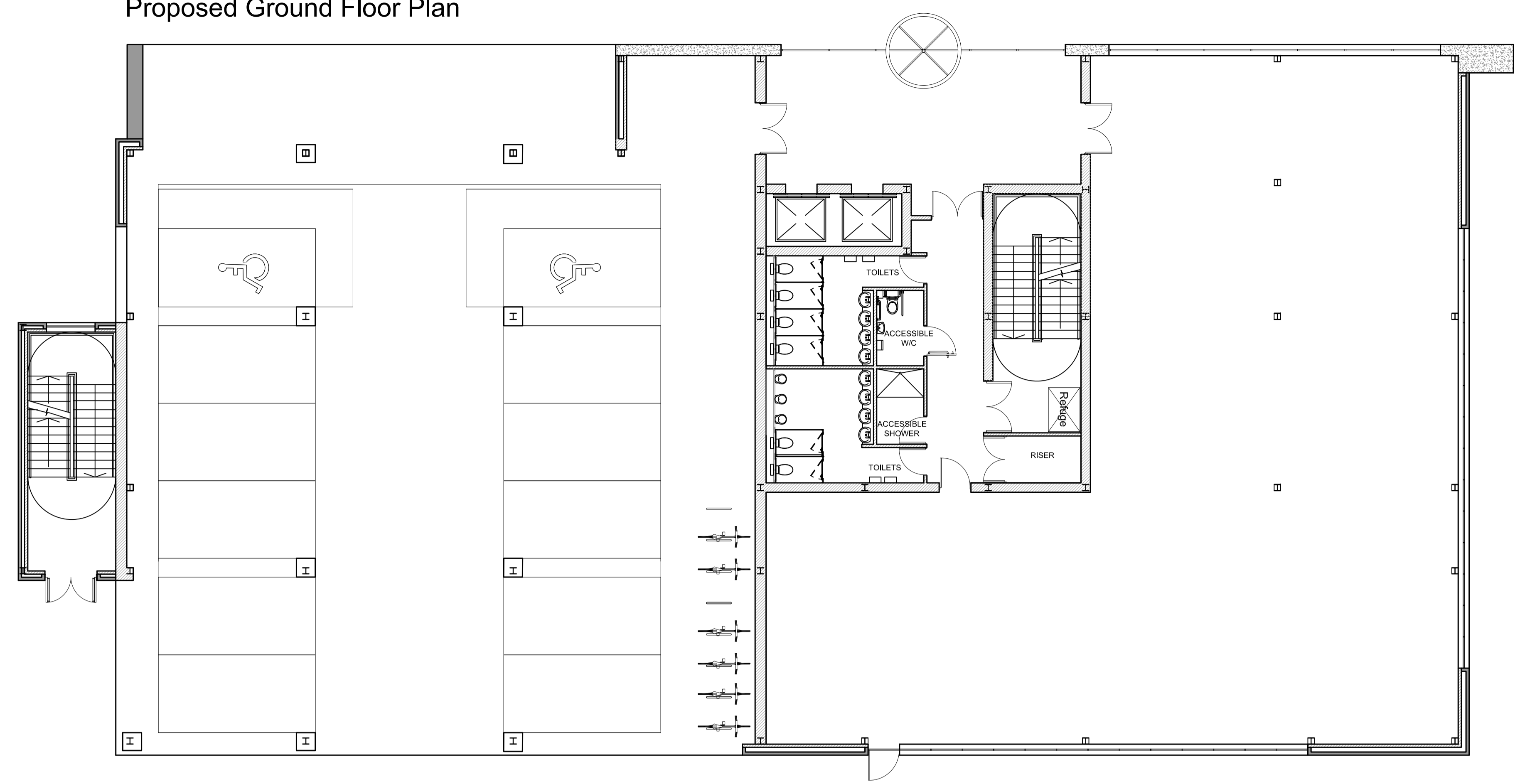


Figured dimensions only are to be taken from this drawing

- Preliminary     Comment     Planning
- Tender     Construction     Record
- Legal

REVISIONS			
REV	DATE	DESCRIPTION	CHECKED BY

Proposed Ground Floor Plan



**AREA SCHEDULE**

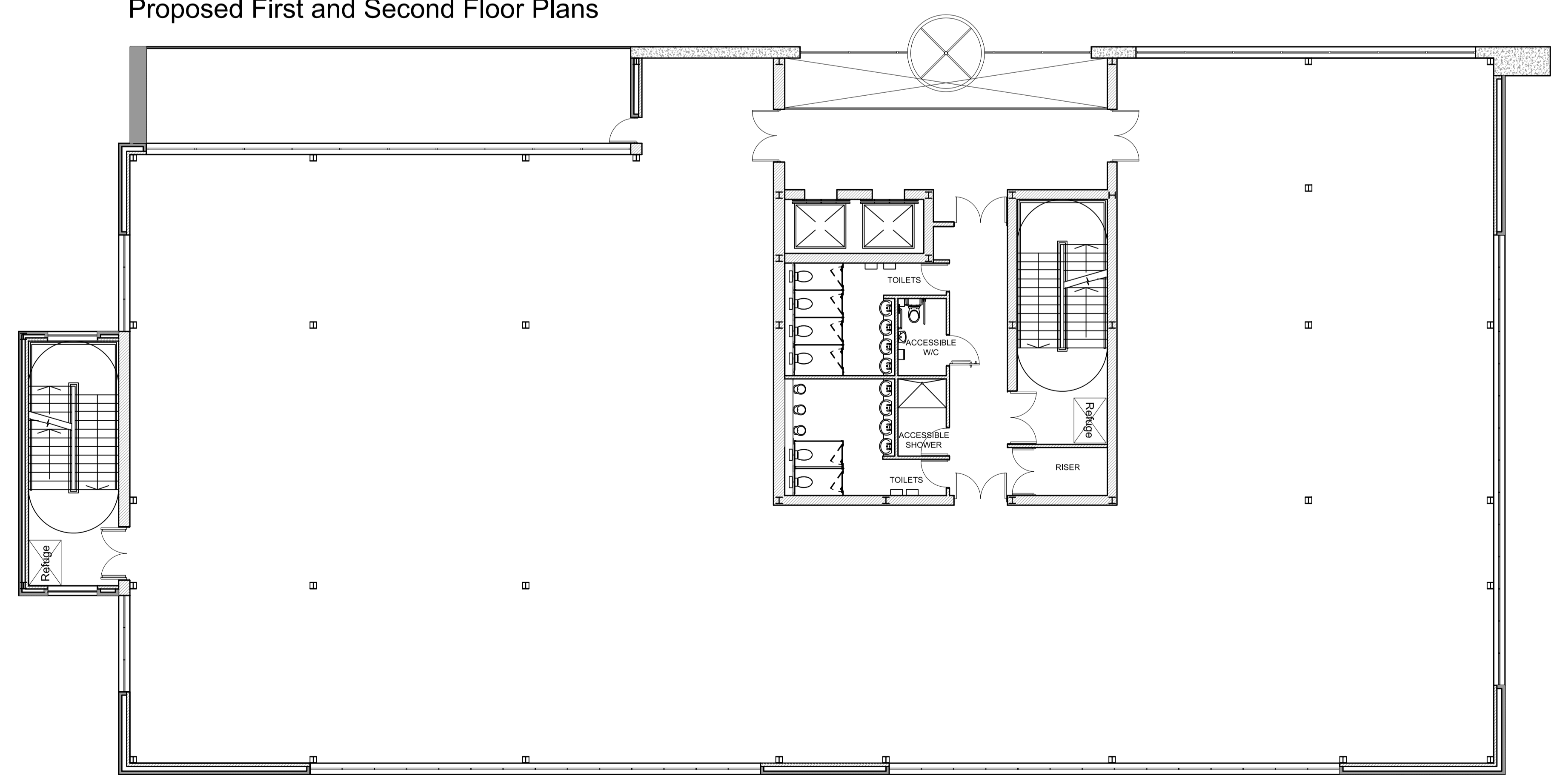
**Ground Floor G.I.A**  
5,414 SQ FT / 503 SQM  
**Ground Floor N.I.A**  
3,648 SQ FT / 339 SQM

**First Floor G.I.A**  
9,558 SQ FT / 888 SQM  
**First Floor N.I.A**  
7890 SQ FT / 733 SQM

**Second Floor G.I.A**  
9,558 SQ FT / 888 SQM  
**Second Floor N.I.A**  
7890 SQ FT / 733 SQM

**Total Area**  
G.I.A 24,530 SQ FT / 2,279 SQM  
N.I.A 19,429 SQ FT / 1,805 SQM

Proposed First and Second Floor Plans



CLIENT **HG HINTON GROUP**

PROJECT Grovefield Way Cheltenham

TITLE Proposed Office 4 Indicative Floor Plans

SCALE @ A1 1:100    DATE 04-05-17

DRAWING 178 - 93    REV

DRAWN BY LT    CHECKED BY DW

**DDP DESIGN DEVELOPMENT PARTNERSHIP**

ARCHITECTURE + PLANNING + PRINCIPAL DESIGNER