

**PLANTING SCHEDULE**

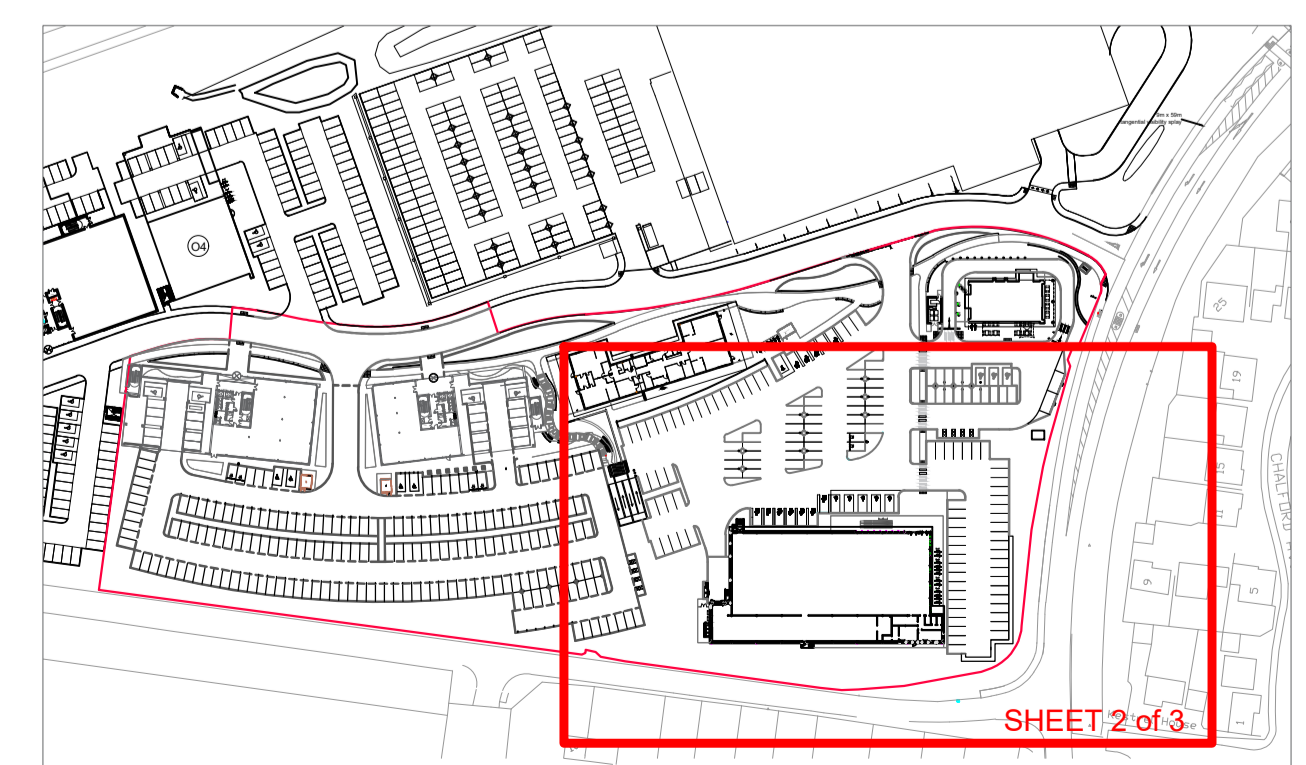
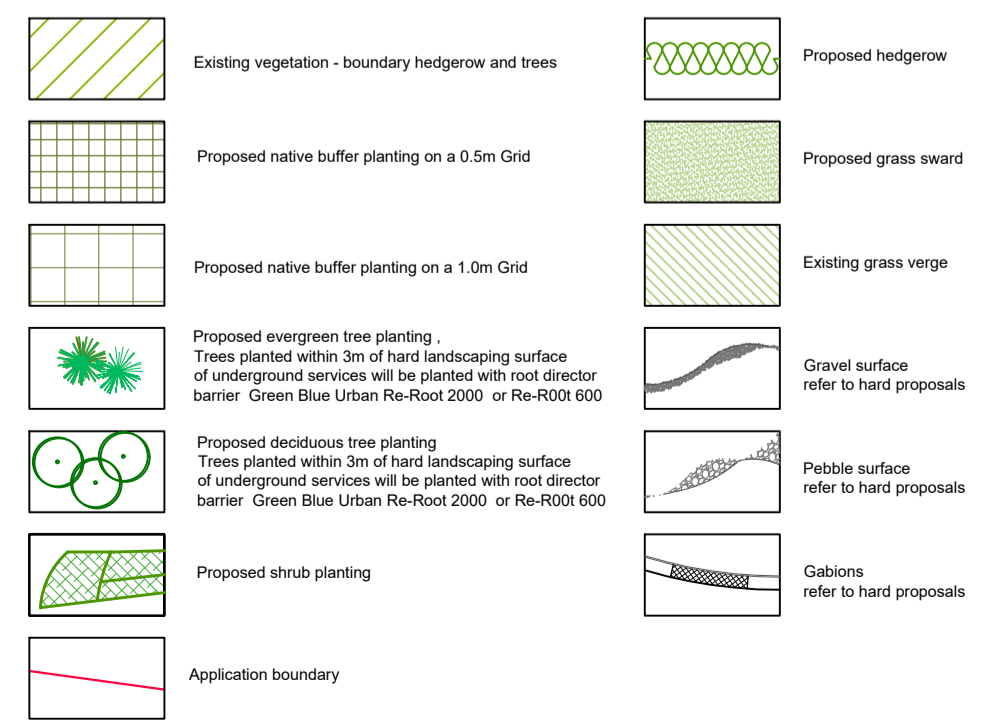
| Species                            | Size                            | Spec            | Density                           |
|------------------------------------|---------------------------------|-----------------|-----------------------------------|
| <b>Trees</b>                       |                                 |                 |                                   |
| Acer campestre                     | 14-16cm girth                   | Root balled     | As shown                          |
| Acer campestre 'Streetwise'        | 18-20cm girth                   | Root balled     | As shown                          |
| Acer x freemanii 'Autumn Blaze'    | 18-20cm girth                   | Root balled     | As shown                          |
| Acer griseum                       | 20-25cm girth                   | Container grown | As shown                          |
| Alnus incana 'Laciniata'           | 18-20cm girth                   | Root balled     | As shown                          |
| Alnus glutinosa                    | 18-20cm girth                   | Container grown | As shown                          |
| Amelanchier Ballerina              | 14-16cm girth - Standard        | Container grown | As shown                          |
| Amelanchier canadensis             | 14-16cm girth - multi stem      | Container grown | As shown                          |
| Amelanchier lamarkii               | 14-16cm girth - multi stem      | Container grown | As shown                          |
| Betula pendula                     | 18-20cm girth - multi stem      | Container grown | As shown                          |
| Betula utilis 'Grayswood Ghost'    | 20-25cm girth - multi stem      | Container grown | As shown                          |
| Carpinus betulus                   | 18-20cm girth                   | Root balled     | As shown                          |
| Carpinus betulus Boxhead           | 25-30cm girth - 3.0m clear stem | Root balled     | As shown                          |
| Ginkgo biloba Emperor's Garden     | 20-25cm girth                   | Root balled     | As shown                          |
| Malus profusion                    | 14-16cm girth                   | Root balled     | As shown                          |
| Pinus nigra                        | 3.5m high                       | Container grown | As shown                          |
| Pinus pinea                        | 4.5m high                       | Container grown | As shown                          |
| Pinus sylvestris                   | 3.5m high                       | Container grown | As shown                          |
| Prunus avium 'Plena'               | 14-16cm girth                   | Root balled     | As shown                          |
| Pyrus chanticleer                  | 20-25cm girth                   | Root balled     | As shown                          |
| Quercus ilex                       | 18-20cm girth                   | Container grown | As shown                          |
| Quercus robur                      | 16-18cm girth                   | Root balled     | As shown                          |
| Tilia cordata 'Winter Orange'      | 25-30cm girth                   | Root balled     | As shown                          |
| <b>Accent plants</b>               |                                 |                 |                                   |
| Dicksonia Antarctica               | 2.2-2.5m high                   | 50lt            | As shown                          |
| Drimys winteri                     | 2.2-2.5m high                   | 75lt            | As shown                          |
| Magnolia Stelata                   | 2.2-2.5m high                   | 100lt           | As shown                          |
| Philadelphus coronaries            | 1.5-1.8m high                   | 25lt            | As shown                          |
| Photinia Red Robin                 | 2.2-2.5m high                   | 50lt            | As shown                          |
| Viburnum burkwoodii 'Anne Russell' | 1.8-2.0m high                   | 25lt            | As shown                          |
| Cornus kousa                       | 2.2-2.5m high                   | 50lt            | As shown                          |
| <b>Hedge</b>                       |                                 |                 |                                   |
| Buxus microphylla 'Faulkner'       | 20-30cm high - hedge trough     | 1m trough       | 1 per lin m                       |
| Buxus sempervirens                 | 40-60cm high - hedge trough     | 1m trough       | 1 per lin m                       |
| Fagus sylvatica                    | 1.2-1.5m high                   | Bare root       | 5 per lin m double staggered rows |
| Griselinia littoralis              | 0.8-1.0m high                   | Root balled     | 3 per lin m double staggered rows |
| Taxus baccata                      | 90-1.2m high                    | 10lt            | 3 per lin m double staggered rows |
| <b>Native hedge</b>                |                                 |                 |                                   |
| Acer campestre                     | 60-90cm high                    | Bare root       | 12.5%                             |
| Corylus avellana                   | 60-90cm high                    | Bare root       | 40%                               |
| Crataegus monogyna                 | 60-90cm high                    | Bare root       | 20%                               |
| Ilex aquifolium                    | 60-90cm high                    | 5lt             | 10%                               |
| Lonicera periclymenum              | 60-90cm high                    | 3lt             | 2.5%                              |
| Prunus spinosa                     | 60-90cm high                    | Bare root       | 5%                                |
| Viburnum opulus                    | 60-90cm high                    | Bare root       | 10%                               |
| <b>Climbers</b>                    |                                 |                 |                                   |
| Cestrum parqui                     | 1.5-1.8m high - on trellis      | 20lt            | As shown                          |
| Jasminum officinale                | 1.5-1.8m high - on trellis      | 20lt            | As shown                          |
| Trachelospermum jasminoides        | 1.5-1.8m high - on trellis      | 20lt            | As shown                          |

| Species                               | Size              | Spec      | Density     |
|---------------------------------------|-------------------|-----------|-------------|
| <b>Ferns / grasses / herbaceous</b>   |                   |           |             |
| Dryopteris blandfordii                | N/A               | 5lt       | 3 per sq.m. |
| Dryopteris Filix-Mas                  | N/A               | 3lt       | 4 per sq.m. |
| Heuchera 'Fire Chief'                 | N/A               | 3lt       | 4 per sq.m. |
| Heuchera 'Fireworks'                  | N/A               | 3lt       | 4 per sq.m. |
| Hosta 'Paradise Island'               | N/A               | 5lt       | 3 per sq.m. |
| Hosta sieboldiana elegans             | N/A               | 5lt       | 3 per sq.m. |
| Miscanthus 'Morning Light'            | N/A               | 3lt       | 3 per sq.m. |
| Miscanthus sinensis 'Gold Bar'        | N/A               | 3lt       | 3 per sq.m. |
| Miscanthus sinensis 'Yakushima Dwarf' | N/A               | 3lt       | 3 per sq.m. |
| Pennisetum alopecuroides 'Hamel'      | N/A               | 3lt       | 3 per sq.m. |
| Sasa veitchii                         | 40-60cm           | 5lt       | 3 per sq.m. |
| Stipa gigantea                        | N/A               | 5lt       | 2 per sq.m. |
| <b>Shrubs</b>                         |                   |           |             |
| Berberis thunbergii 'Admiration'      | 20-30cm high      | 3lt       | 4 per sq.m. |
| Bergenia 'Bressingham White'          | 10-15cm high      | 3lt       | 5 per sq.m. |
| Ceanothus 'Blue Sapphire'             | 30-40cm high      | 3lt       | 2 per sq.m. |
| Choisya ternata                       | 50-60cm high      | 3lt       | 2 per sq.m. |
| Choisya ternata 'Sundance'            | 50-60cm high      | 3lt       | 2 per sq.m. |
| Cornus alba 'Sibirica'                | 60-90cm high      | 3lt       | 2 per sq.m. |
| Cornus sanguinea                      | 60-90cm high      | 3lt       | 2 per sq.m. |
| Cornus sanguinea 'Winter Flame'       | 60-90cm high      | 3lt       | 2 per sq.m. |
| Cornus stolonifera 'Flaviramea'       | 60-90cm high      | 3lt       | 2 per sq.m. |
| Corylus avellana 'Purpurea'           | 60-90cm high      | 3lt       | 1 per sq.m. |
| Escallonia Gold Ellen                 | 30-40cm high      | 3lt       | 3 per sq.m. |
| Euonymus 'Dart's Carpet'              | 20-30cm high      | 3lt       | 3 per sq.m. |
| Euonymus Emerald 'n' Gold             | 20-30cm high      | 3lt       | 4 per sq.m. |
| Euonymus Silver Queen                 | 20-30cm high      | 3lt       | 4 per sq.m. |
| Hebe 'Red Edge'                       | 20-30cm high      | 3lt       | 3 per sq.m. |
| Hebe 'Emerald Gem'                    | 20-30cm high      | 3lt       | 5 per sq.m. |
| Hedera helix 'Green Ripple'           | 15-20cm high      | 3lt       | 4 per sq.m. |
| Ilex crenata 'Dark Green'             | 40-60cm high      | 5lt       | 2 per sq.m. |
| Lonicera nitida 'Elegant'             | 30-40cm high      | 3lt       | 2 per sq.m. |
| Lonicera nitida Maigrun               | 30-40cm high      | 3lt       | 3 per sq.m. |
| Pachysandra terminalis 'Green Carpet' | 10-15cm high      | 2lt       | 5 per sq.m. |
| Prunus 'Otto Luyken'                  | 30-40cm high      | 3lt       | 2 per sq.m. |
| Rosa rugosa Alba                      | 30-40cm high      | Bare root | 2 per sq.m. |
| Rosmarinus officinalis 'Prostratus'   | 30-40cm high      | 3lt       | 2 per sq.m. |
| Skimmia japonica 'Fragrans'           | 30-40cm high      | 3lt       | 3 per sq.m. |
| Skimmia japonica 'Rubella'            | 30-40cm high      | 3lt       | 3 per sq.m. |
| Viburnum davidii                      | 40-60cm high      | 5lt       | 2 per sq.m. |
| Viburnum opulus 'Compactum'           | 40-60cm high      | Bare root | 2 per sq.m. |
| <b>Buffer planting</b>                |                   |           |             |
| Acer campestre                        | 60-90cm high      | Bare root | 10%         |
| Alnus glutinosa                       | 1.5-1.8m high ftd | Bare root | 10%         |
| Betula pubescens                      | 1.5-1.8m high ftd | 5lt       | 5%          |
| Corylus avellana                      | 60-90cm high      | Bare root | 20%         |
| Crataegus monogyna                    | 60-90cm high      | Bare root | 12.5%       |
| Cornus sanguinea                      | 60-90cm high      | Bare root | 5%          |
| Ilex aquifolium                       | 60-90cm high      | 5lt       | 15%         |
| Lonicera periclymenum                 | 60-90cm high      | 3lt       | 2.5%        |
| Prunus spinosa                        | 60-90cm high      | Bare root | 5%          |
| Rosa canina                           | 60-90cm high      | Bare root | 2.5%        |
| Sorbus aria                           | 1.5-1.8m high ftd | Bare root | 3%          |
| Sorbus torminalis                     | 1.5-1.8m high ftd | Bare root | 4%          |
| Viburnum lantana                      | 60-90cm high      | 3lt       | 2%          |
| Viburnum opulus                       | 60-90cm high      | Bare root | 2.5%        |

**Plant species**



**Legend**



|      |            |                         |    |
|------|------------|-------------------------|----|
|      |            |                         |    |
| D    | 26/10/2017 | Minor amendments        | MG |
| C    | 23/08/2017 | Asid lobby removed      | MG |
| B    | 22/08/2017 | Planting schedule added | HK |
| Mark | Date       | Details                 | By |

Client: **Hinton Group**

Project Title: **Corinthian Park, Cheltenham Phase 2**

Scale: 1:200 for the original size of A1

Drawn by: MG Checked by: - Passed by: MG Date: 26.10.2017

Drawing Status: **Planning**

Drawing Originator: **DAVIESLANDSCAPE ARCHITECTS**

Suite F1, Stroud House, Russell Street, Stroud, Gloucestershire, GL5 3AN  
 T: 01453 760380 e: info@dl-ia.co.uk w: www.dl-ia.co.uk

Drawing Title: **Planting Proposals (Sheet 2 of 3)**

| Rev No | Drawn | Design | Volume | Level | Type | Discp | Number | Revision |
|--------|-------|--------|--------|-------|------|-------|--------|----------|
| 1755   | -     | DLA    | -      | -     | P    | L     | 07     | D        |

DO NOT SCALE FROM THIS DRAWING

Visiter: DATA1195 Corinthe  
 Parks: Landscaping: Planning: Current  
 Drawing: DLA: 1755: 07 Rev: 2: 07 Rev: 2 and 08 Rev: C: 07