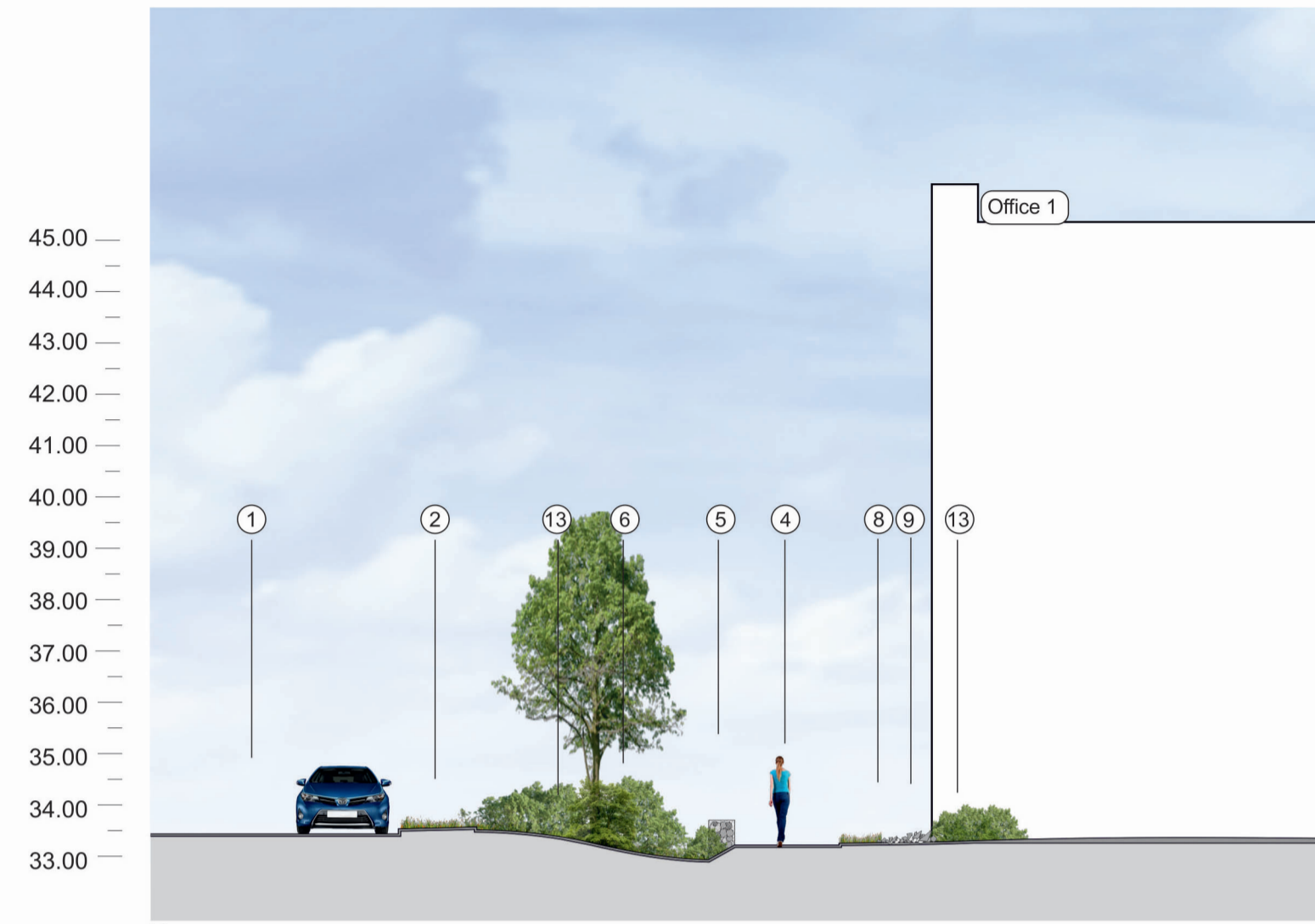
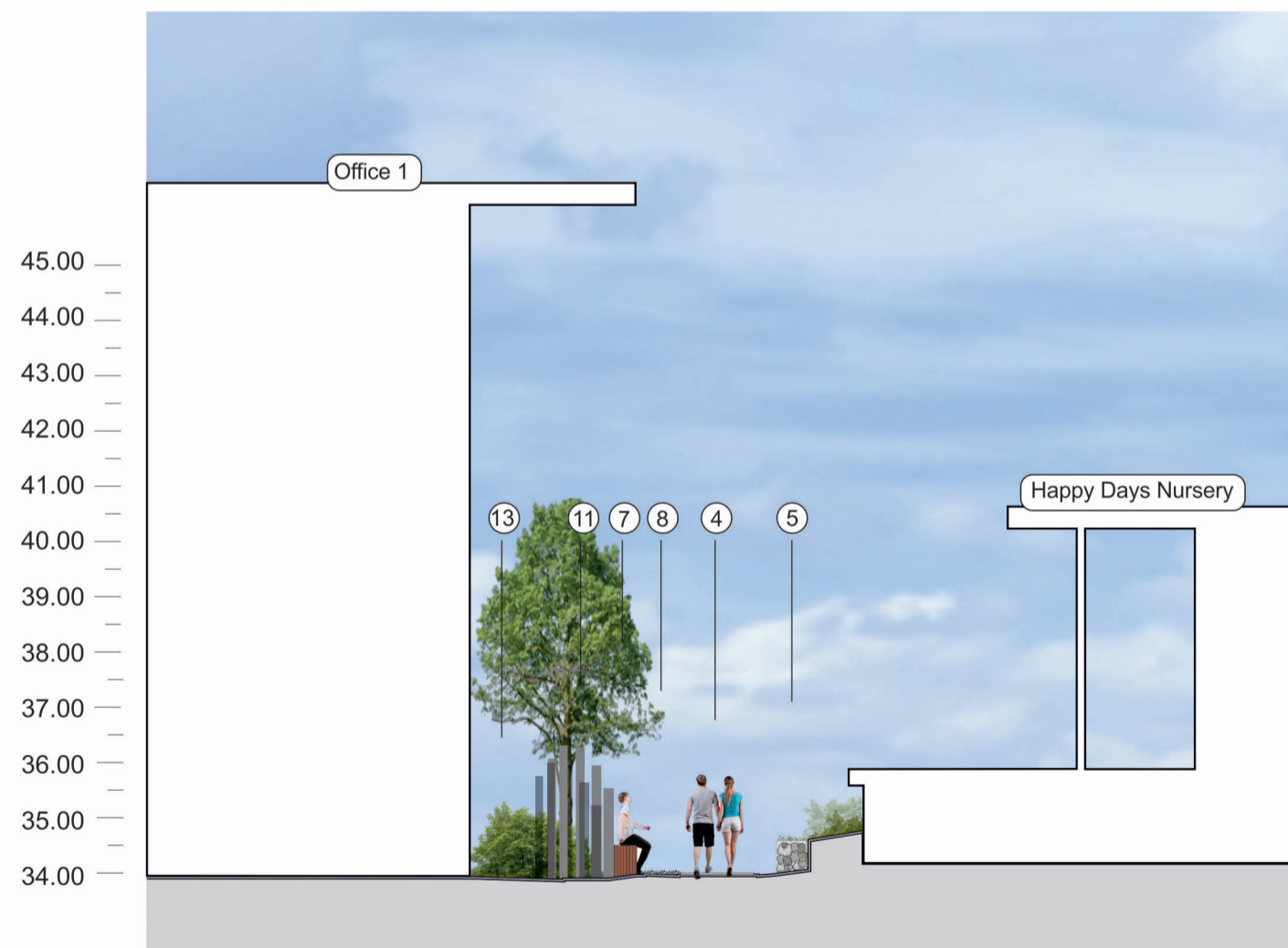




A



B



C



- ① Infrastructure Road
- ② Verge
- ③ 1.1m High Lang & Fulton Fencing
- ④ Footpath
- ⑤ Gabion Wall
- ⑥ Rill
- ⑦ Seating
- ⑧ Gravel
- ⑨ Pebbles
- ⑩ Pavement
- ⑪ Vertical Stone Shards
- ⑫ Car Park
- ⑬ Shrub Planting
- ⑭ Hedge
- ⑮ Sheffield Cycle Stands
- ⑯ Grovefield Way

0m 2m 5m

Landscape & Visual Assessment

On behalf of:  
**Hinton Group**

Produced by:  
**DAVIESLANDSCAPE**  
ARCHITECTS  
Suite F1, Stroud House, Russell Street, Stroud, Gloucestershire, G15 3AN  
t: 01453 760380 e: info@d-ls.co.uk w: www.d-ls.co.uk

PROJECT:  
**Corinthian Park,  
Cheltenham**

DRAWING TITLE:  
**Landscape Sections**

DATE: 27/10/17 SCALE: 1:1250 @ A2

REPORT REFERENCE: DLA.1755.L.10 Rev A