

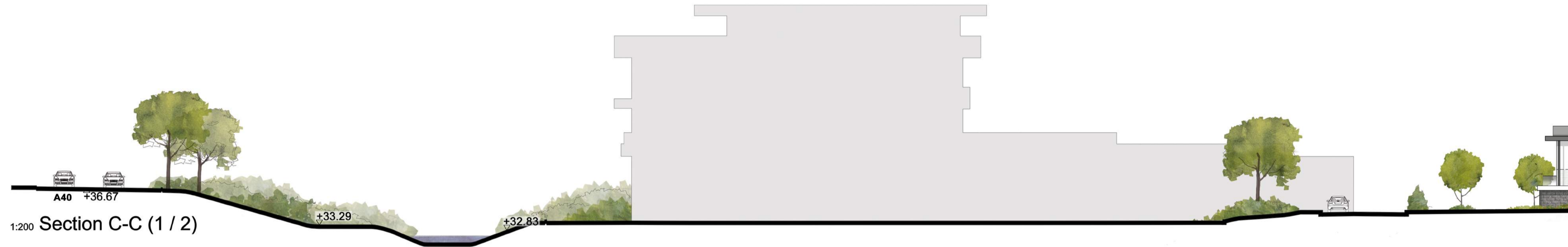
© This drawing/disk and the works depicted are the copyright of Design Development Partnership Ltd and may not be reproduced or amended except by written permission. No liability will be accepted for amendments made by other persons.

All drawings and specification to be read in conjunction with Structural Engineer and other consultants drawings; all discrepancies should be reported to the architect.

Figured dimensions only are to be taken from this drawing. Landscaping indicative only. Please refer to detailed landscaped design.

Preliminary Comment Planning
 Tender Construction Record
 Legal

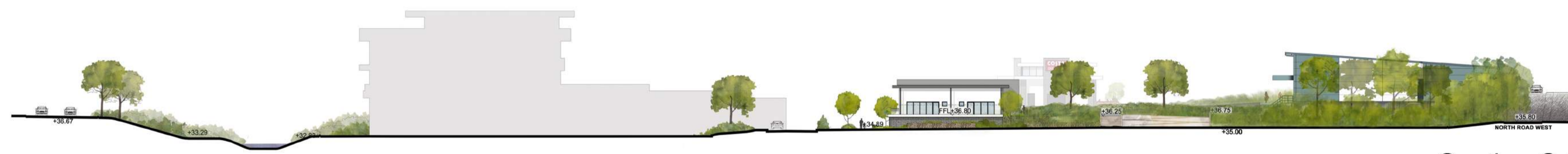
REVISIONS			
REV	DATE	DESCRIPTION	CHECKED BY
A	11-07-17	SITEWIDE AMENDMENTS	D.W
B	31-10-17	KEY PLAN AMENDED TO REFLECT LATEST SITE PLAN	L.T



1:200 Section C-C (1 / 2)



1:200 Section C-C (2 / 2)



1:500 Section C-C



CLIENT **HG HINTON GROUP**

PROJECT Corinthian Park
Grovefield Way
Cheltenham

TITLE Proposed Site Section
C-C

SCALE @ A1 As Indicated DATE 28-03-17

DRAWING 178-88 REV B

DRAWN BY R.D CHECKED BY D.W

DDP DESIGN DEVELOPMENT PARTNERSHIP

ARCHITECTURE + PLANNING + PRINCIPAL DESIGNER

A: Reims House, 8 The Croft, Buntford Drive, Bromsgrove, B60 4JE
 T: 01527 571 785
 F: 01527 878 207
 E: mail@ddpdesign.co.uk
 W: www.hintongroup.co.uk