

C. This drawing/disk and the works depicted are the copyright of Design Development Partnership Ltd and may not be reproduced or amended except by written permission. No liability will be accepted for amendments made by other persons.

All drawings and specification to be read in conjunction with Structural Engineer and other consultants drawings; all discrepancies should be reported to the architect.

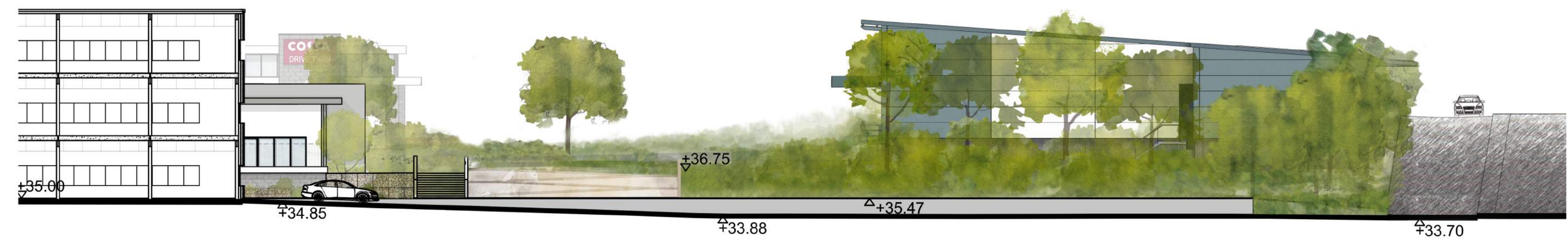
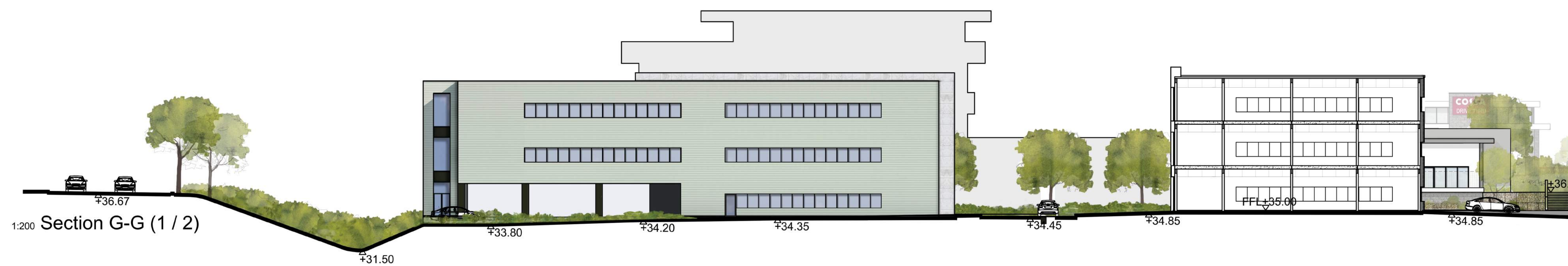
Figured dimensions only are to be taken from this drawing  
Landscaping indicative only.  
Please refer to detailed landscaped design.

Preliminary     Comment     Planning

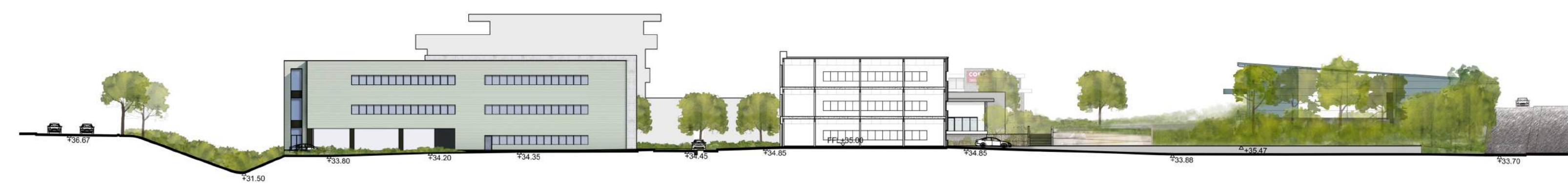
Tender     Construction     Record

Legal

REVISIONS			
REV	DATE	DESCRIPTION	CHECKED BY
A	31-10-17	KEY PLAN AMENDED TO REFLECT LATEST SITE PLAN	L.T



1:200 Section G-G (2 / 2)



1:500 Section G-G



CLIENT **HG HINTON GROUP**

PROJECT Corinthian Park  
Grovefield Way  
Cheltenham

TITLE Proposed Site Section  
G-G

SCALE @ A1 As Indicated    DATE 19-05-17

DRAWING 178-97    REV A

DRAWN BY L.T    CHECKED BY D.W

**DDP DESIGN DEVELOPMENT PARTNERSHIP**  
ARCHITECTURE + PLANNING + PRINCIPAL DESIGNER

A: Reims House, 8 The Croft, Buntford Drive, Bromsgrove, B60 4JE  
T: 01527 571 765  
F: 01527 878 207  
E: mail@ddpdesign.co.uk  
W: www.hintongroup.co.uk