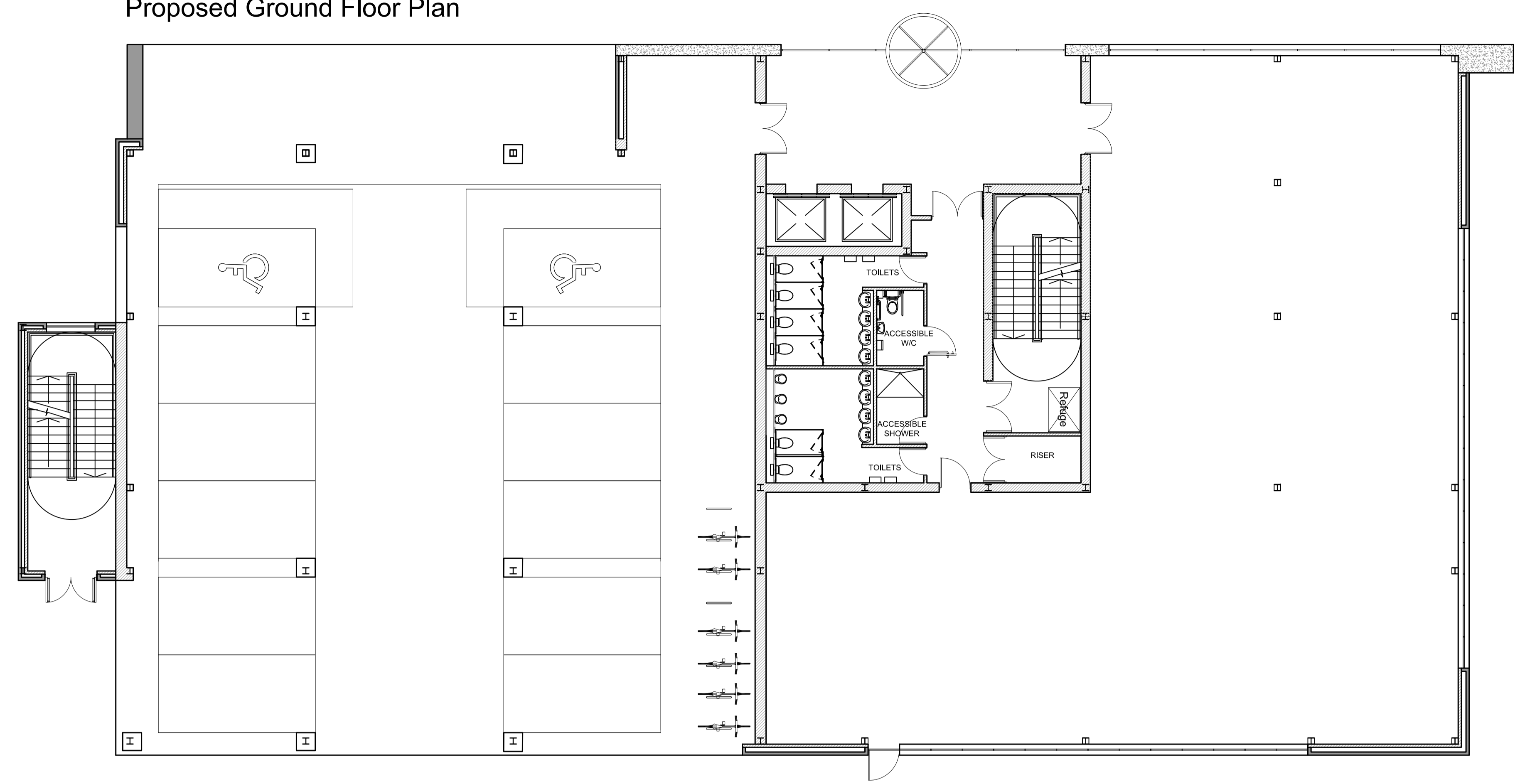


Figured dimensions only are to be taken from this drawing

- Preliminary Comment Planning
- Tender Construction Record
- Legal

REVISIONS			
REV	DATE	DESCRIPTION	CHECKED BY

Proposed Ground Floor Plan



AREA SCHEDULE

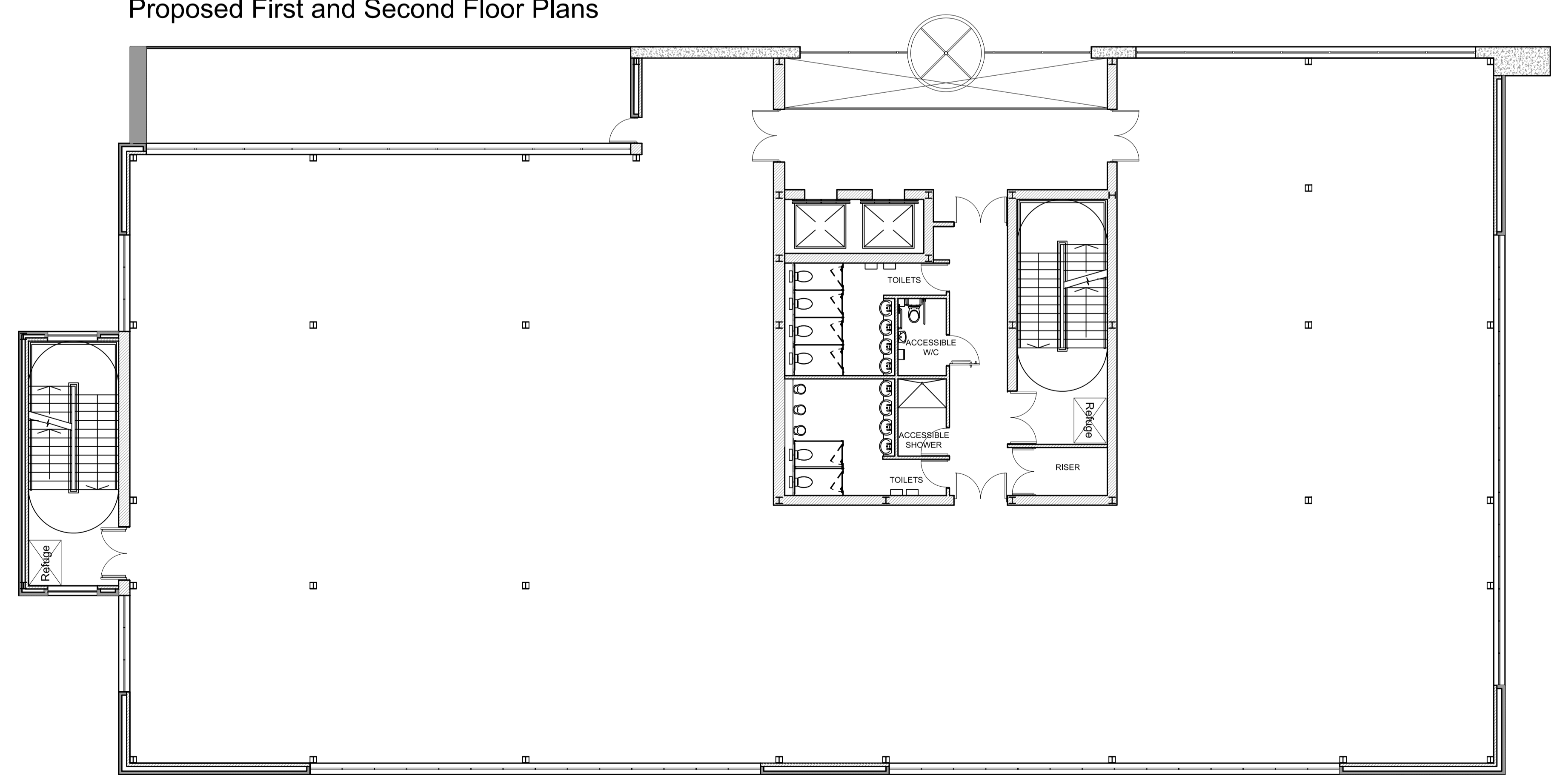
Ground Floor G.I.A
5,414 SQ FT / 503 SQM
Ground Floor N.I.A
3,648 SQ FT / 339 SQM

First Floor G.I.A
9,558 SQ FT / 888 SQM
First Floor N.I.A
7890 SQ FT / 733 SQM

Second Floor G.I.A
9,558 SQ FT / 888 SQM
Second Floor N.I.A
7890 SQ FT / 733 SQM

Total Area
G.I.A 24,530 SQ FT / 2,279 SQM
N.I.A 19,429 SQ FT / 1,805 SQM

Proposed First and Second Floor Plans



CLIENT **HG HINTON GROUP**

PROJECT Grovefield Way
Cheltenham

TITLE Proposed Office 4
Indicative Floor Plans

SCALE @ A1 1:100 DATE 04-05-17

DRAWING 178 - 93 REV

DRAWN BY LT CHECKED BY DW

DDP DESIGN DEVELOPMENT PARTNERSHIP

ARCHITECTURE + PLANNING + PRINCIPAL DESIGNER