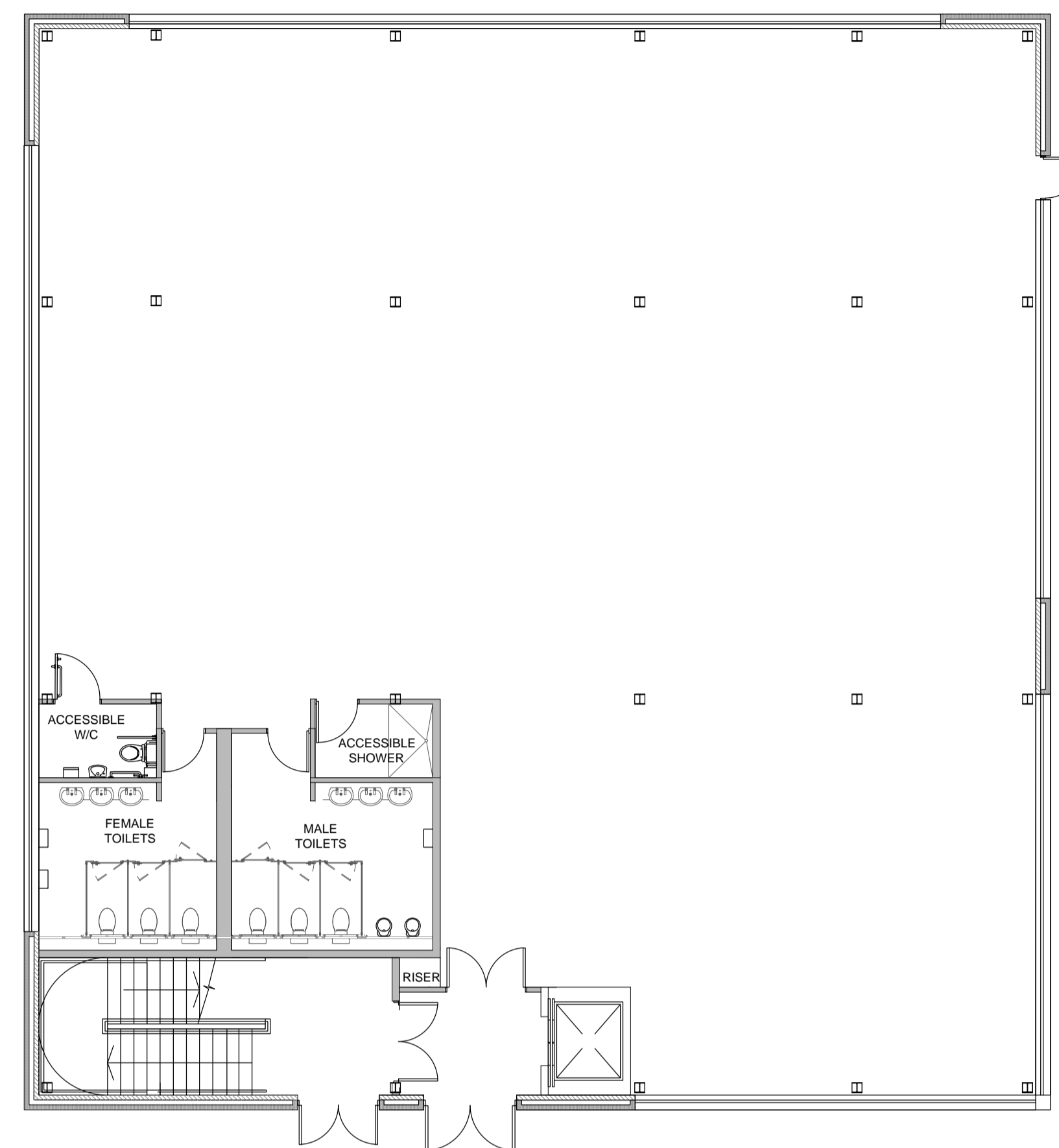


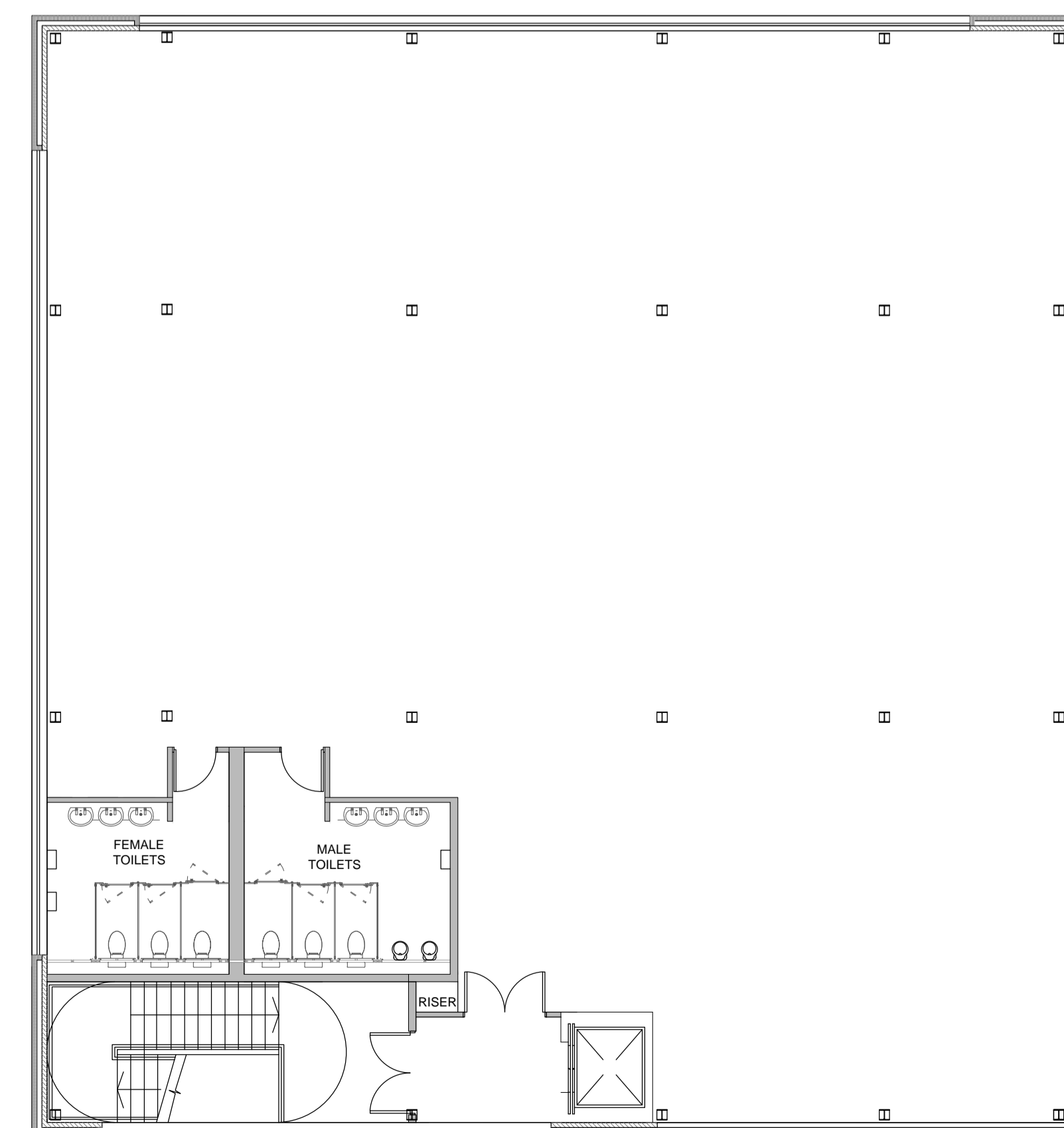
Figured dimensions only are to be taken from this drawing

- Preliminary     Comment     Planning
- Tender     Construction     Record
- Legal

REVISIONS			
REV	DATE	DESCRIPTION	CHECKED BY
A	13-09-18	FLOOR PLANS UPDATED	RTFS



PROPOSED GROUND FLOOR PLAN



PROPOSED FIRST FLOOR PLAN

CLIENT **HG HINTON GROUP**

PROJECT Grovefield Way  
Cheltenham

TITLE Proposed Office 5  
Indicative Floor Plans

SCALE @ A1 1:100    DATE 04-09-18

DRAWING 178 - 114    REV A

DRAWN BY LT    CHECKED BY DW

**DDP** DESIGN  
DEVELOPMENT  
PARTNERSHIP

ARCHITECTURE + PLANNING + PRINCIPAL DESIGNER