

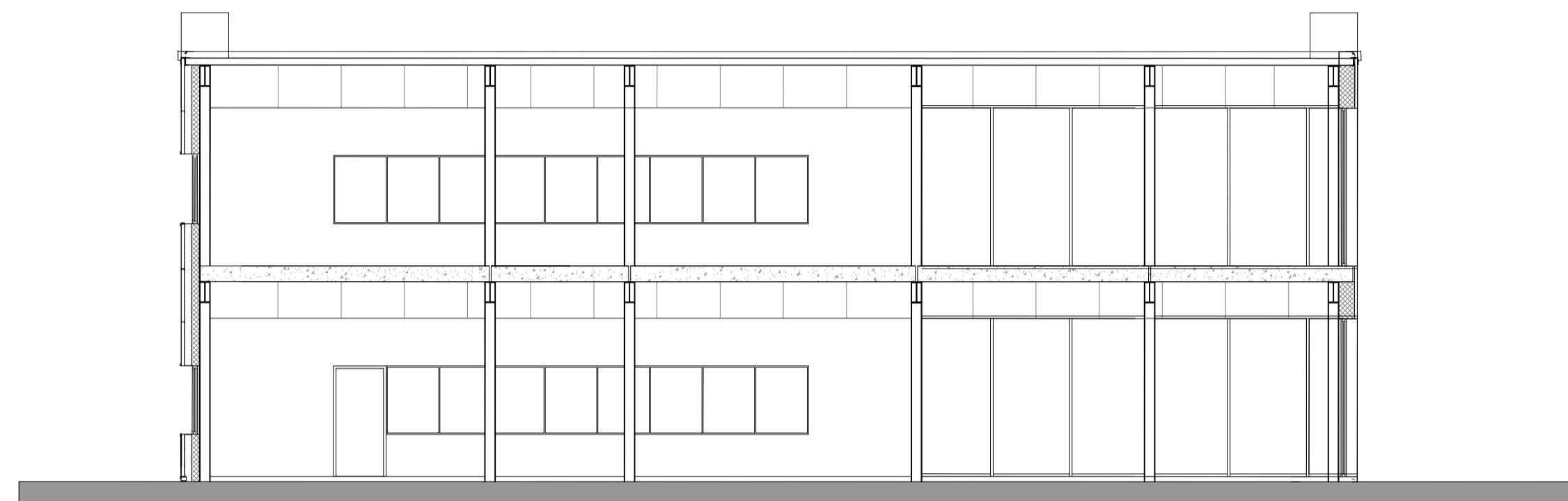
© This drawing/disk and the works depicted are the copyright of Design Development Partnership Ltd and may not be reproduced or amended except by written permission. No liability will be accepted for amendments made by other persons.

All drawings and specification to be read in conjunction with Structural Engineer and other consultants drawings; all discrepancies should be reported to the architect.

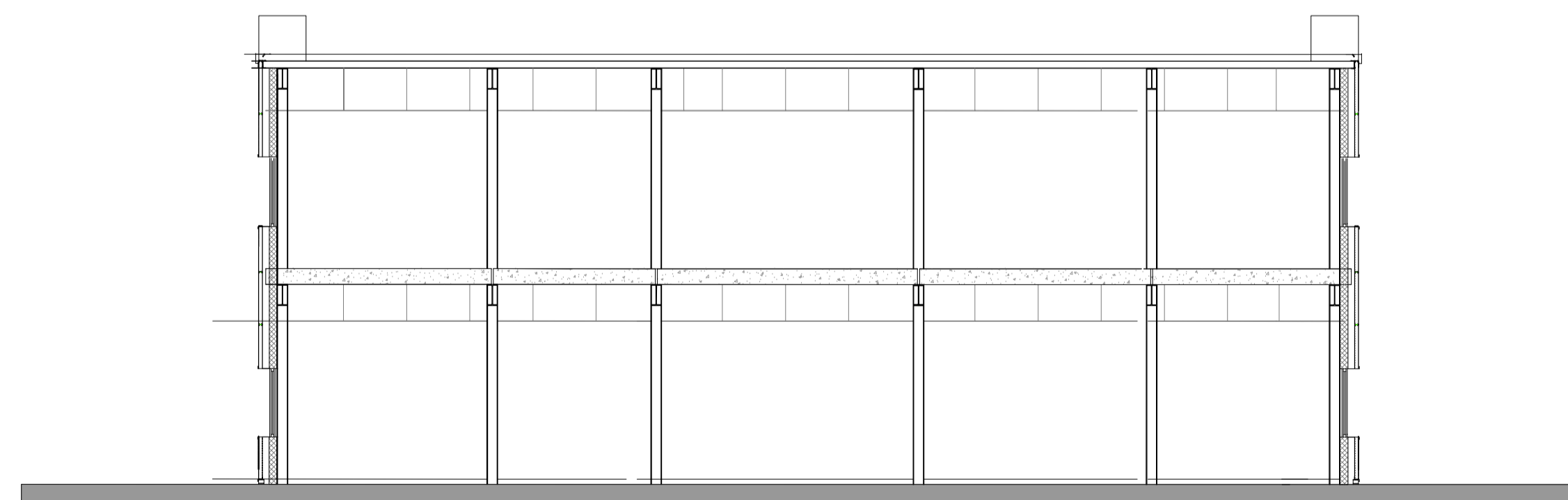
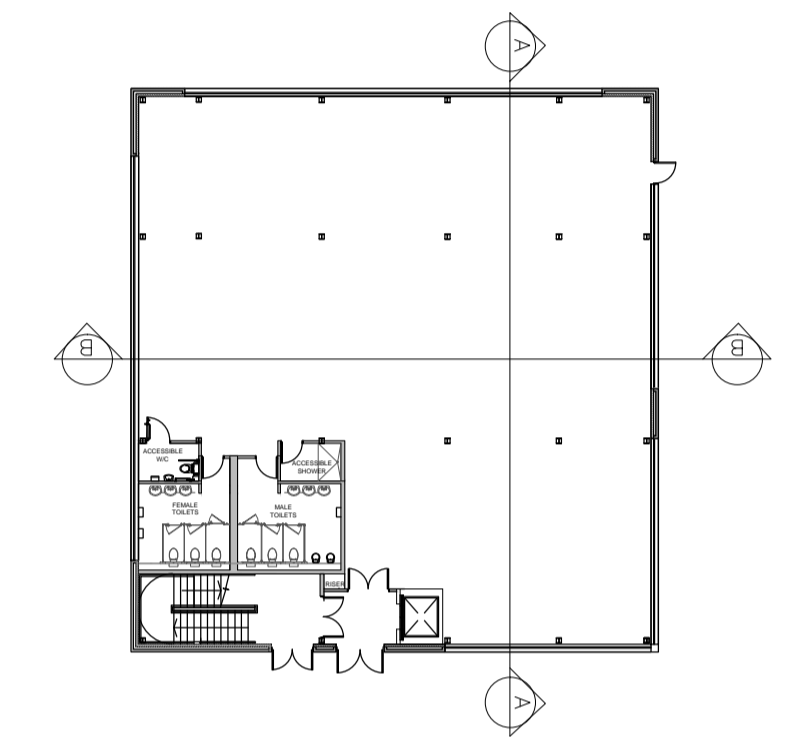
Figured dimensions only are to be taken from this drawing

- Preliminary Comment Planning
- Tender Construction Record
- Legal

REVISIONS			
REV	DATE	DESCRIPTION	CHECKED BY



Section A-A



Section B-B

CLIENT **HG HINTON GROUP**

PROJECT Grovefield Way
Cheltenham

TITLE Proposed Office 5
Indicative Sections

SCALE @ A1 1:100 DATE 04-09-18

DRAWING 178 - 115 REV

DRAWN BY LT CHECKED BY DW

DDP DESIGN DEVELOPMENT PARTNERSHIP

ARCHITECTURE + PLANNING + PRINCIPAL DESIGNER

A: Reims House, 8 The Croft, Buntsford Drive, Bromsgrove, B60 4JE
T: 01527 571 765
F: 01527 578 207
E: mail@ddpdesign.co.uk
W: www.hintongroup.co.uk