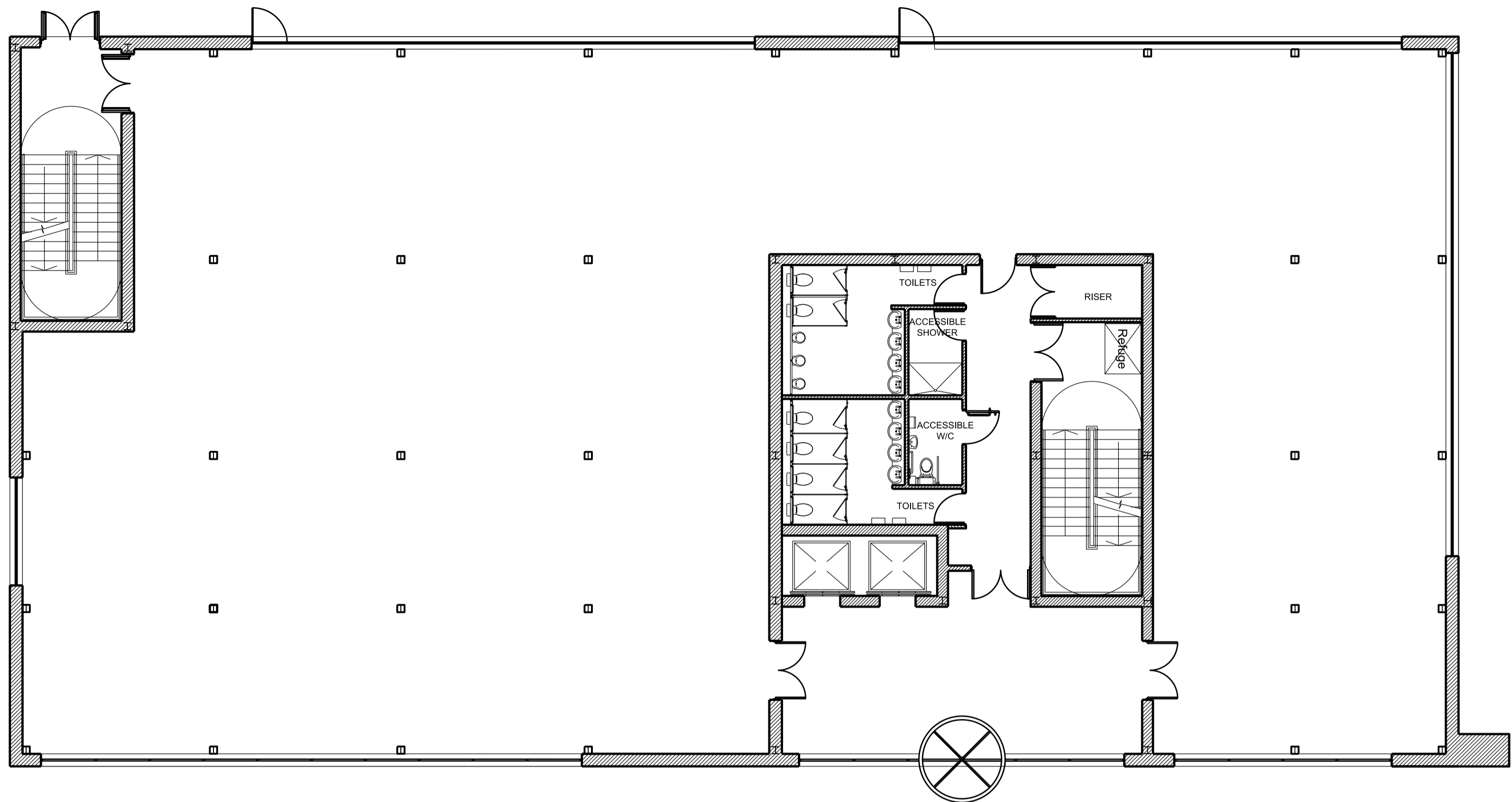
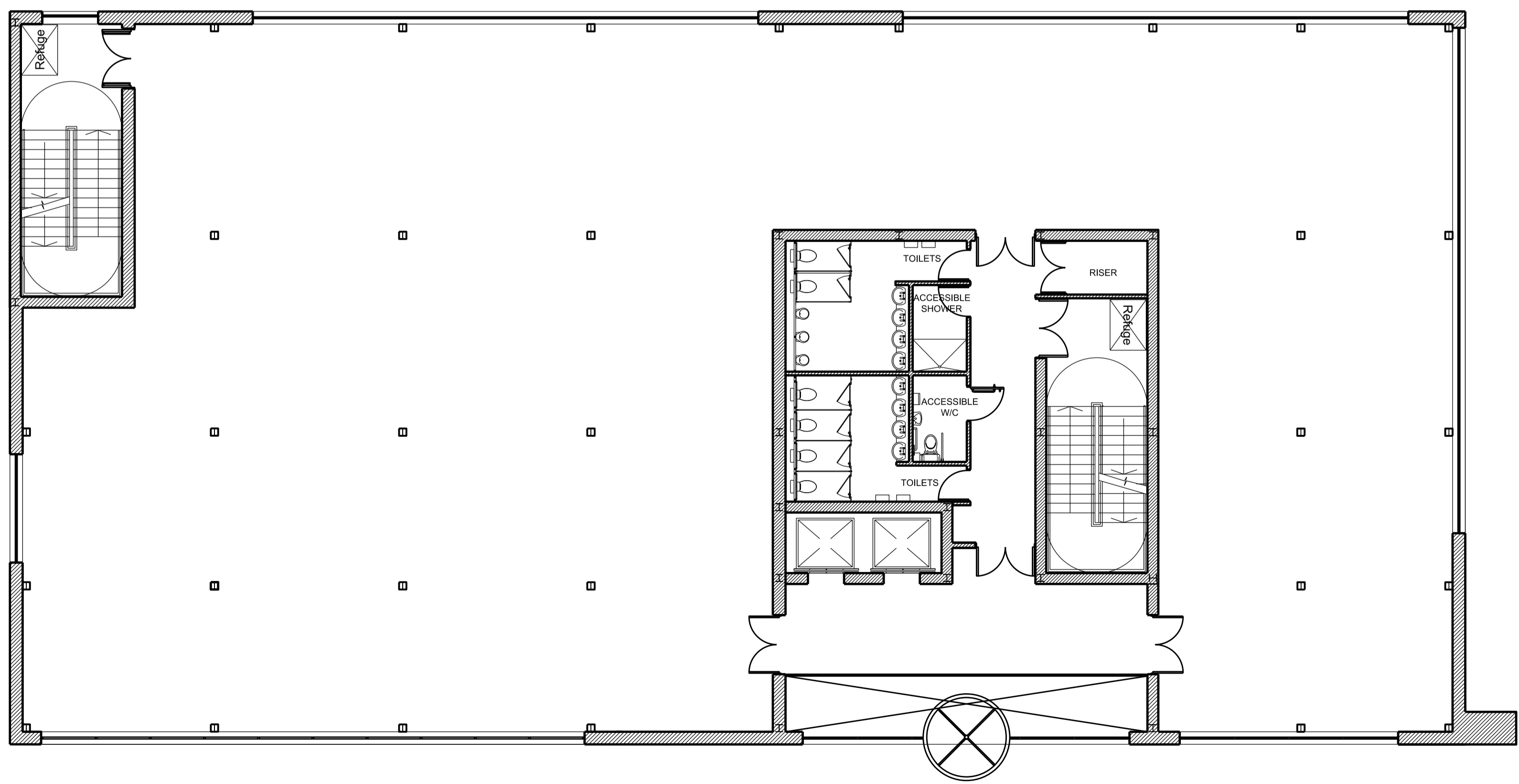


- Preliminary Comment Planning
 Tender Construction Record
 Legal

REVISIONS			
REV	DATE	DESCRIPTION	CHECKED BY
A	16-05-16	-GENERAL DESIGN ALTERATIONS INCLUDING REVISED CLADDING AND GLAZING.	D.W
B	03-05-16	-REVISED UNDERCROFT PARKING LAYOUT. -REVISED GLAZING CONFIGURATION. -UPPER FLOOR BALCONIES INTRODUCED.	D.W
C	18-11-16	-MINOR REVISION, EXTERNAL WALL LOCATION. -REVISED SCHEDULE OF ACCOMMODATION.	D.W
D	07.12.16	-STAIRCASE ALTERATIONS. -FIRE DOOR ALTERATIONS.	D.W
E	11.05.16	-AREA SCHEDULE CORRECTED	D.W
F	12.09.18	REVISED TO OCCUPIER REQUIREMENTS	D.W



Proposed Ground Floor Plan



Proposed First and Second Floor Plan

CLIENT **HINTON GROUP**
PROJECT Grovefield Way
Cheltenham
TITLE Proposed Office 1 Floor Plans
SCALE @ A1 1:100 **DATE** 21-04-16
DRAWING 178-19 **REV** F
DRAWN BY R.D **CHECKED BY** D.W

ARCHITECTURE + PLANNING + PRINCIPAL DESIGNER
 A: Reims House, 8 The Croft, Buntsford Drive, Bromsgrove, B60 4JE
 T: 01527 571 765
 E: mail@ddpdesign.co.uk
 W: www.hintongroup.co.uk