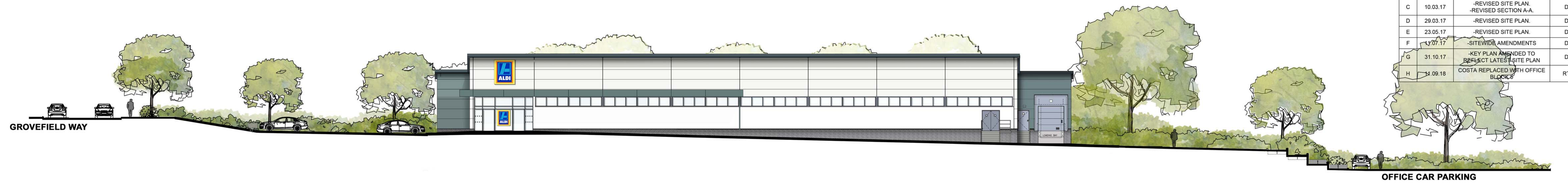


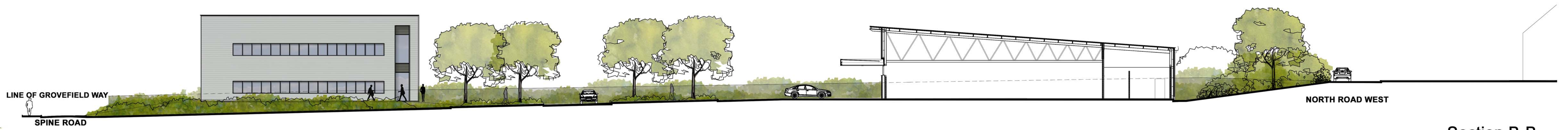
Figured dimensions only are to be taken from this drawing
Landscaping indicative only.
Please refer to detailed landscaped design.

Preliminary Comment Planning
 Tender Construction Record
 Legal

| REVISIONS | | | |
|-----------|----------|---|------------|
| REV | DATE | DESCRIPTION | CHECKED BY |
| A | 23.02.17 | -REVISED SITE PLAN. | D.W |
| B | 28.02.17 | -REVISED SITE PLAN. -REVISED SECTION A-A. | L.T |
| C | 10.03.17 | -REVISED SITE PLAN. -REVISED SECTION A-A. | D.W |
| D | 29.03.17 | -REVISED SITE PLAN. | D.W |
| E | 23.05.17 | -REVISED SITE PLAN. | D.W |
| F | 17.07.17 | -SITEWIDE AMENDMENTS | D.W |
| G | 31.10.17 | -KEY PLAN AMENDED TO REFLECT LATEST SITE PLAN | D.W |
| H | 14.09.18 | COSTA REPLACED WITH OFFICE BLOCKS | RTFS |



1:200 Section A-A



1:200 Section B-B



CLIENT **HG HINTON GROUP**

PROJECT Corinthian Park
Grovefield Way
Cheltenham

TITLE Proposed Site Sections
A-A & B-B

SCALE @ A1 1:200 DATE 15-02-17

DRAWING 178-86 REV H

DRAWN BY R.D CHECKED BY D.W

DDP DESIGN DEVELOPMENT PARTNERSHIP
ARCHITECTURE + PLANNING + PRINCIPAL DESIGNER

A: Reims House, 8 The Croft, Buntsford Drive, Bromsgrove, B60 4JE
T: 01527 571 785
F: 01527 878 207
E: mail@ddpdesign.co.uk
W: www.hintongroup.co.uk