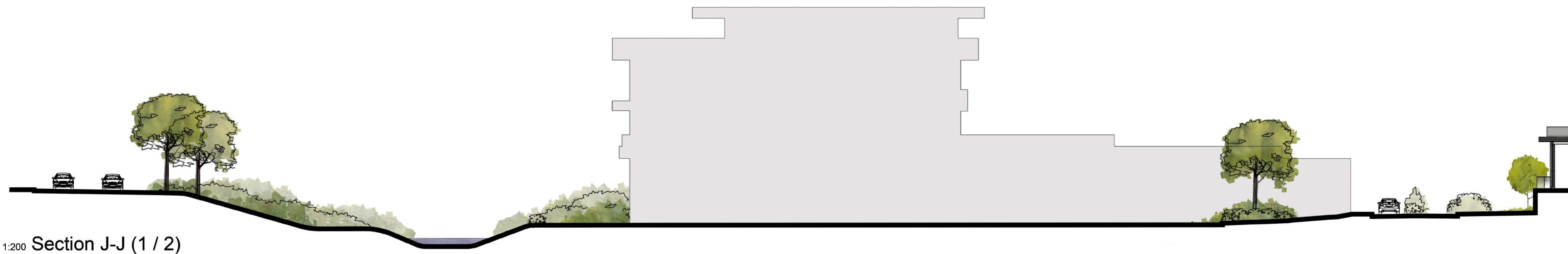
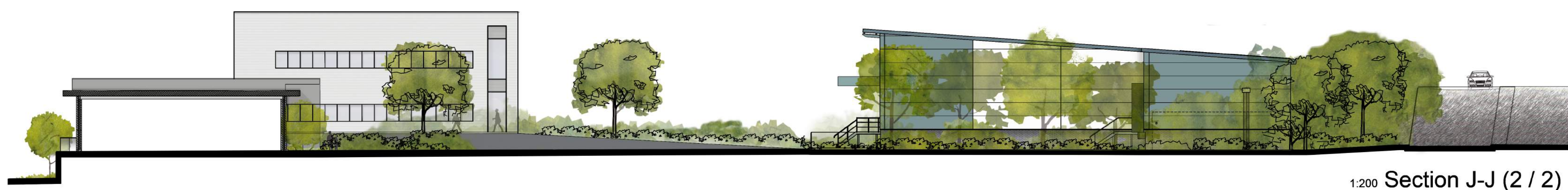


- Preliminary Comment Planning
 Tender Construction Record
 Legal

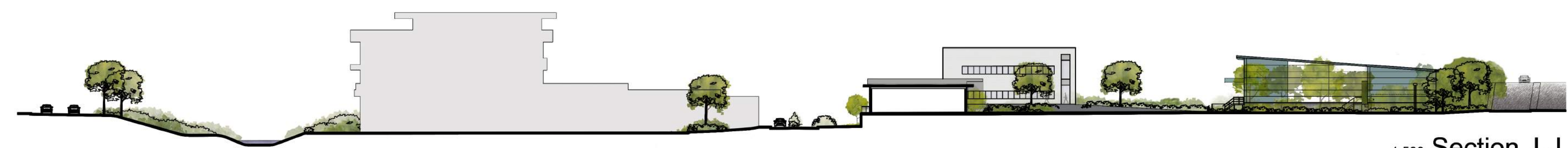
REVISIONS			
REV	DATE	DESCRIPTION	CHECKED BY
A	31.10.17	KEY PLAN AMENDED TO REFLECT LATEST SITE PLAN	D.W
B	11.09.18	COSTA REPLACED WITH OFFICE BLOCK FIVE	RTFS



1:200 Section J-J (1 / 2)



1:200 Section J-J (2 / 2)



1:500 Section J-J

CLIENT **HG HINTON GROUP**

PROJECT Corinthian Park
Grovefield Way
Cheltenham

TITLE Proposed Site Section
J-J

SCALE @ A1 As Indicated DATE 14-06-17

DRAWING 178-98 REV B

DRAWN BY R.D CHECKED BY L.T

DDP DESIGN DEVELOPMENT PARTNERSHIP

ARCHITECTURE + PLANNING + PRINCIPAL DESIGNER

A: Reims House, 8 The Croft, Buntford Drive, Bromsgrove, B60 4JE
T: 01527 571 785
F: 01527 878 207
E: mail@ddpdesign.co.uk
W: www.hintongroup.co.uk