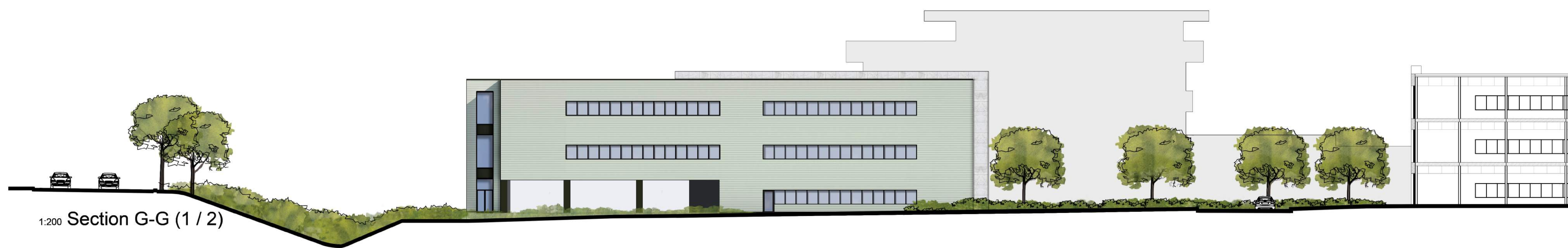


- Preliminary     Comment     Planning  
 Tender     Construction     Record  
 Legal

REVISIONS			
REV	DATE	DESCRIPTION	CHECKED BY
A	31.10.17	KEY PLAN AMENDED TO REFLECT LATEST SITE PLAN	D.W
B	11.09.18	COSTA REPLACED WITH OFFICE BLOCK FIVE	RTFS



1:200 Section G-G (1 / 2)



1:200 Section G-G (2 / 2)



1:500 Section G-G



CLIENT **HG HINTON GROUP**  
 PROJECT Corinthian Park  
 Grovefield Way  
 Cheltenham  
 TITLE Proposed Site Section  
 G-G  
 SCALE @ A1 As Indicated    DATE 19-05-17  
 DRAWING 178-97    REV B  
 DRAWN BY L.T    CHECKED BY D.W

**DDP DESIGN DEVELOPMENT PARTNERSHIP**  
 ARCHITECTURE + PLANNING + PRINCIPAL DESIGNER  
 A: Reims House, 8 The Croft, Buntford Drive, Bromsgrove, B60 4JE  
 T: 01527 571 765  
 F: 01527 878 207  
 E: mail@ddpdesign.co.uk  
 W: www.hintongroup.co.uk