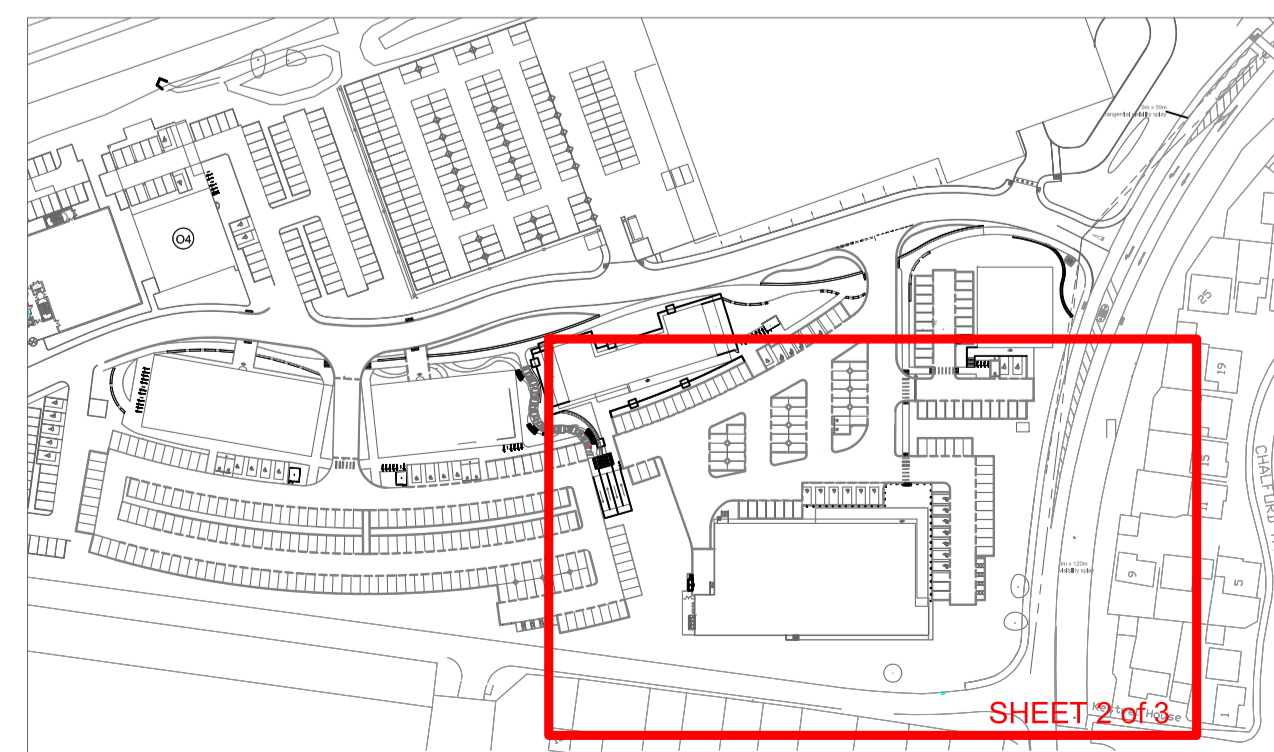
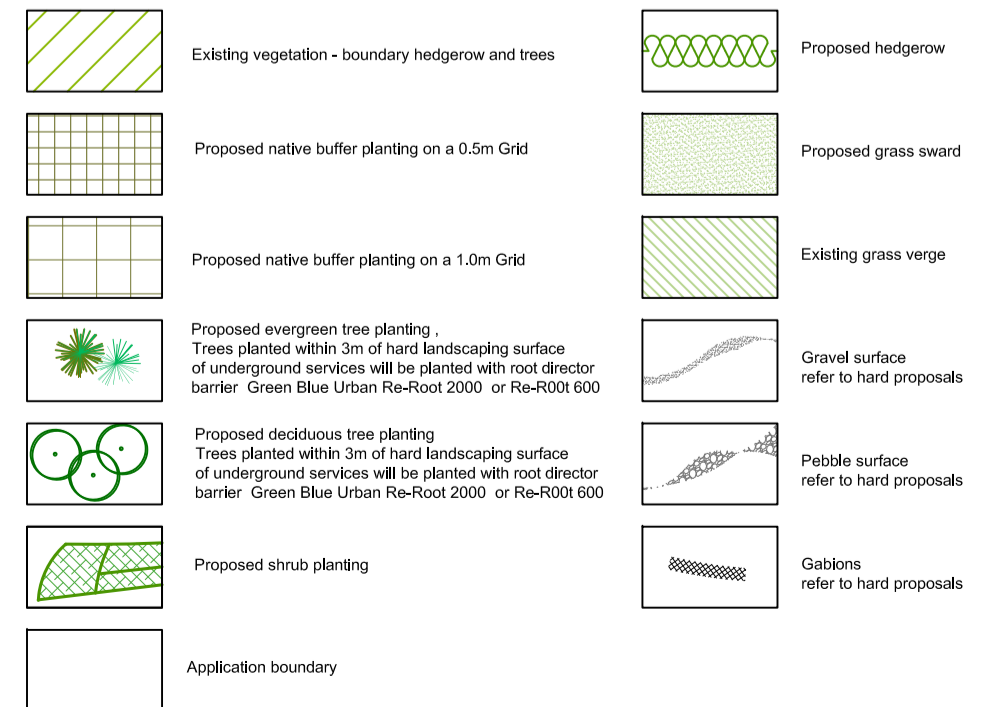


PLANTING SCHEDULE	Size	Spec	Density	Ferns / grasses / herbaceous	Density
Trees					
Acer campestre	14-16cm girth	Root balled	As shown	Dryopteris blanfordii	N/A
Acer campestre 'Streetwise'	18-20cm girth	Root balled	As shown	Dryopteris Filix-Mas	N/A
Acer x freemanii 'Autumn Blaze'	18-20cm girth	Root balled	As shown	Heuchera 'Fire Chief'	N/A
Acer griseum	20-25cm girth	Container grown	As shown	Heuchera 'Fireworks'	N/A
Alnus incana 'Laciniata'	18-20cm girth	Root balled	As shown	Hosta 'Paradise Island'	N/A
Alnus glutinosa	18-20cm girth	Container grown	As shown	Hosta sieboldiana elegans	N/A
Amelanchier Ballerina	14-16cm girth - Standard	Container grown	As shown	Miscanthus 'Morning Light'	N/A
Amelanchier canadensis	14-16cm girth - multi stem	Container grown	As shown	Miscanthus sinensis 'Gold Bar'	N/A
Amelanchier lamarkii	14-16cm girth - multi stem	Container grown	As shown	Miscanthus Sinensis 'Yakushima Dwarf'	N/A
Betula pendula	18-20cm girth - multi stem	Container grown	As shown	Pennisetum alopecuroides 'Hameln'	N/A
Betula utilis 'Grayswood Ghost'	20-25cm girth - multi stem	Container grown	As shown	Sasa velutina	40-60cm
Carpinus betulus	18-20cm girth	Root balled	As shown	Stipa gigantea	N/A
Carpinus betulus Boxhead	25-30cm girth - 3.0m clear stem	Root balled	As shown		
Ginkgo biloba Emperor's Garden	20-25cm girth	Root balled	As shown	Shrubs	
Malus profusion	14-16cm girth	Root balled	As shown	Berberis thunbergii 'Admiration'	20-30cm high
Pinus nigra	3.5m high	Container grown	As shown	Bergenia 'Bressingham White'	10-15cm high
Pinus pinea	4.5m high	Container grown	As shown	Ceanothus 'Blue Sapphire'	30-40cm high
Pinus sylvestris	3.5m high	Container grown	As shown	Choisya ternata	50-60cm high
Prunus avium 'Plena'	14-16cm girth	Root balled	As shown	Choisya ternata 'Sundance'	50-60cm high
Pyrus chanticleer	20-25cm girth	Root balled	As shown	Cornus alba 'Sibirica'	60-90cm high
Quercus ilex	18-20cm girth	Container grown	As shown	Cornus sanguinea	60-90cm high
Quercus robur	16-18cm girth	Root balled	As shown	Cornus sanguinea 'Winter Flame'	60-90cm high
Tilia cordata 'Winter Orange'	25-30cm girth	Root balled	As shown	Cornus stolonifera 'Flaviramea'	60-90cm high
Accent plants				Corylus avellana 'Purpurea'	60-90cm high
Dicksonia Antarctica	2.2-2.5m high	50Lt	As shown	Escallonia Gold Ellen	30-40cm high
Drimys winteri	2.2-2.5m high	75Lt	As shown	Euonymus 'Dart's Carpet'	30-40cm high
Magnolia Stellata	2.2-2.5m high	100Lt	As shown	Euonymus Emerald 'n' Gold	20-30cm high
Philadelphus coronarius	1.5-1.8m high	25Lt	As shown	Euonymus Silver Queen	20-30cm high
Photinia Red Robin	2.2-2.5m high	50Lt	As shown	Hebe 'Red Edge'	20-30cm high
Viburnum burkwoodii 'Anne Russell'	1.8-2.0m high	25Lt	As shown	Hebe 'Emerald Gem'	20-30cm high
Cornus kousa	2.2-2.5m high	50Lt	As shown	Hedera helix 'Green Ripple'	15-20cm high
Hedge				Ilex crenata 'Dark Green'	40-60cm high
Buxus microphylla 'Faulkner'	20-30cm high - hedge trough	1m trough	1 per lin m	Lonicera nitida 'Elegant'	30-40cm high
Buxus sempervirens	40-60cm high - hedge trough	1m trough	1 per lin m	Lonicera nitida Maigrun	30-40cm high
Fagus sylvatica	1.2-1.5m high	Bare root	5 per lin m double staggered rows	Pachysandra terminalis 'Green Carpet'	10-15cm high
Griselinia littoralis	0.8-1.0m high	Root balled	3 per lin m double staggered rows	Prunus 'Otto Luyken'	20-30cm high
Lonicera pileata	60-80cm high	10Lt	5 per lin m double staggered rows	Rosa rugosa Alba	30-40cm high
Taxus baccata	90-1.2m high	10Lt	3 per lin m double staggered rows	Rosmarinus officinalis 'Prostratus'	30-40cm high
Native hedge				Skimmia japonica 'Fragrans'	30-40cm high
Acer campestre	60-90cm high	Bare root	12.5%	Viburnum davidii	40-60cm high
Corylus avellana	60-90cm high	Bare root	20%	Viburnum opulus 'Compactum'	40-60cm high
Crataegus monogyna	60-90cm high	Bare root	10%	Buffer planting	
Ilex aquifolium	60-90cm high	3lt	2.5%	Acer campestre	60-90cm high
Prunus spinosa	60-90cm high	Bare root	10%	Alnus glutinosa	1.5-1.8m high fhd
Viburnum opulus	60-90cm high	Bare root	5%	Betula pubescens	1.5-1.8m high fhd
Climbers				Corylus avellana	60-90cm high
Cestrum parqui	1.5-1.8m high - on trellis	20Lt	As shown	Crataegus monogyna	60-90cm high
Jasminum officinale	1.5-1.8m high - on trellis	20Lt	As shown	Cornus sanguinea	60-90cm high
Trachelospermum jasminoides	1.5-1.8m high - on trellis	20Lt	As shown	Ilex aquifolium	60-90cm high
				Lonicera periclymenum	60-90cm high
				Prunus spinosa	60-90cm high
				Rosa canina	60-90cm high
				Sorbus aria	1.5-1.8m high fhd
				Sorbus terminalis	1.5-1.8m high fhd
				Viburnum lantana	60-90cm high
				Viburnum opulus	60-90cm high

Plant species



Legend



Mark	Date	Details	By
E	20/09/2018	Amendments to GA plan	MG
D	20/10/2017	Minor amendments	MG
C	23/06/2017	ABB lobby removed	MG
B	22/06/2017	Planting schedule added	HK

REVISIONS

Client: Hinton Group

Project Title: Corinthian Park, Cheltenham Phase 2

Scale: 1:200 for the original size of: A1

Drawn by: MG Checked by: - Passed by: MG Date: 20.09.2018

Planning

Drawing Originator: DAVIESLANDSCAPE ARCHITECTS

Drawing Title: Planting Proposals (Sheet 2 of 3)

Job No.	Client	Project	Origin	Volume	Level	Type	Block	Number	Sheet
1755	DIA	-	-	-	P	L	07	01	01

DO NOT SCALE FROM THIS DRAWING