



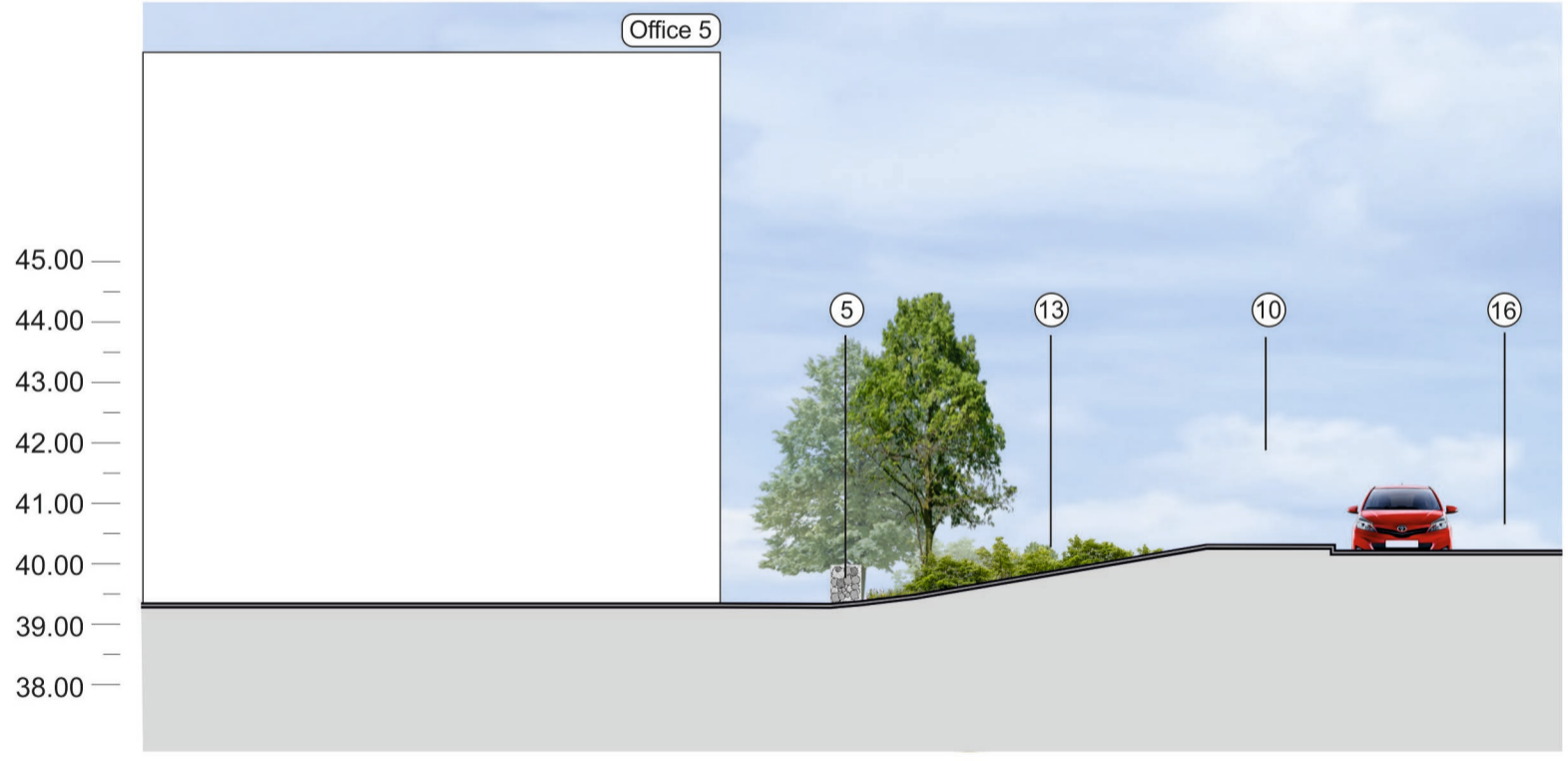
G



Section Location Plan NTS



H



I



- | | | | |
|-----------------------------------|------------|--------------------------|----------------------|
| ① Infrastructure Road | ⑥ Rill | ⑪ Vertical Stone Shards | ⑫ Grovefield Way |
| ② Verge | ⑦ Seating | ⑫ Car Park | ⑬ Costa Drive 'Thru' |
| ③ 1.1m High Lang & Fulton Fencing | ⑧ Gravel | ⑬ Shrub Planting | |
| ④ Footpath | ⑨ Pebbles | ⑭ Hedge | |
| ⑤ Gabion Feature Wall | ⑩ Pavement | ⑮ Sheffield Cycle Stands | |

On behalf of: Hinton Group	PROJECT: Corinthian Park, Cheltenham	
	DRAWING TITLE: Landscape Sections	
Produced by: DAVIESLANDSCAPE ARCHITECTS <small>Suite F1, Stroud House, Russell Street, Stroud, Gloucestershire, GRS 5AN t: 01453 760380 e: info@d-l-a.co.uk w: www.d-l-a.co.uk</small>	DATE: 20/09/18	SCALE: 1:125 @ A2
	REPORT REFERENCE: DLA.1755.L.12 Rev B	