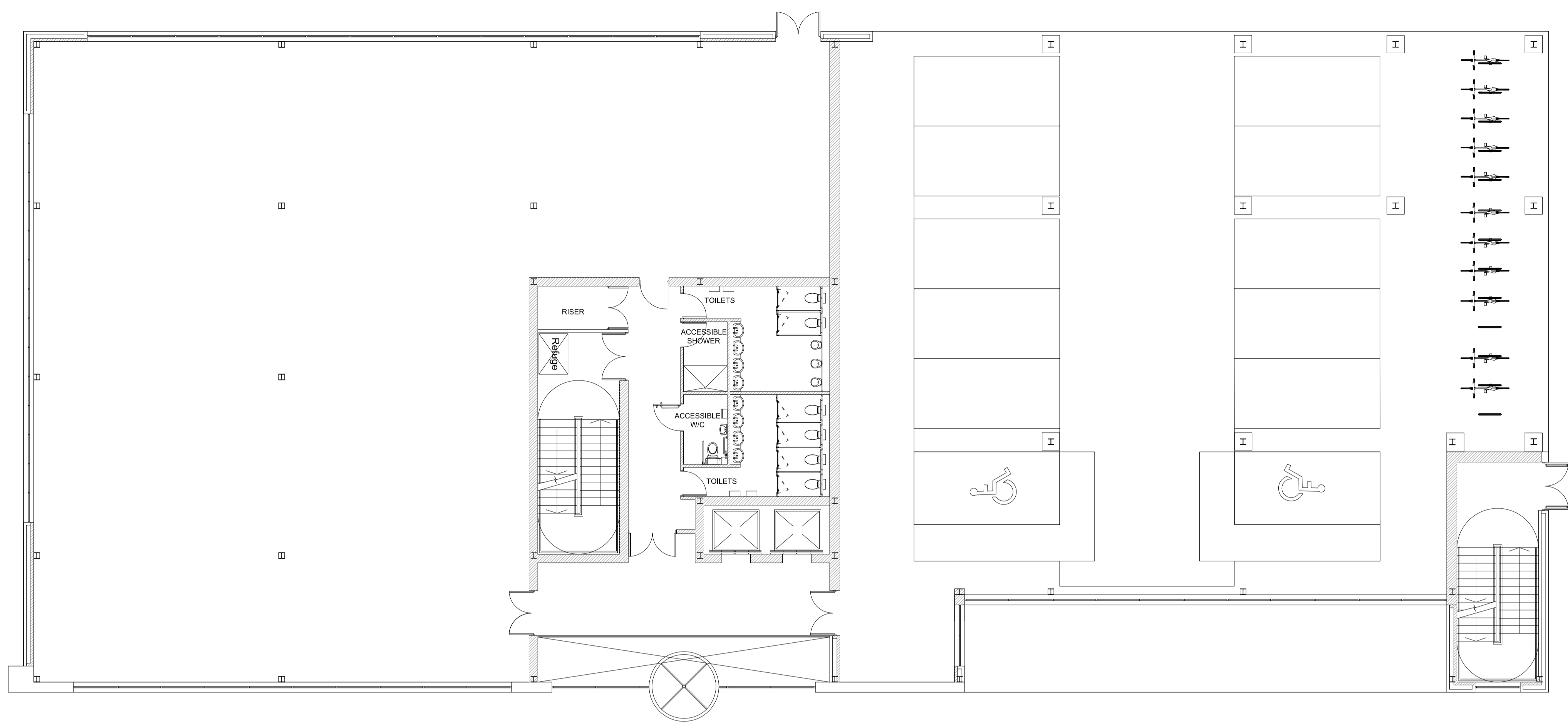


Figured dimensions only are to be taken from this drawing

- Preliminary     Comment     Planning
- Tender     Construction     Record
- Legal

REVISIONS			
REV	DATE	DESCRIPTION	CHECKED BY
A	02.12.16	-SCHEDULE OF ACCOMMODATION AMENDED.	D.W
B	07.12.16	-STAIRCASE ALTERATIONS. -FIRE DOOR ALTERATIONS.	D.W
C	18.07.17	-UPDATED UNDERCROFT PARKING LAYOUT. -FIRE EXIT REPOSITIONED.	L.T



PROPOSED GROUND FLOOR PLAN

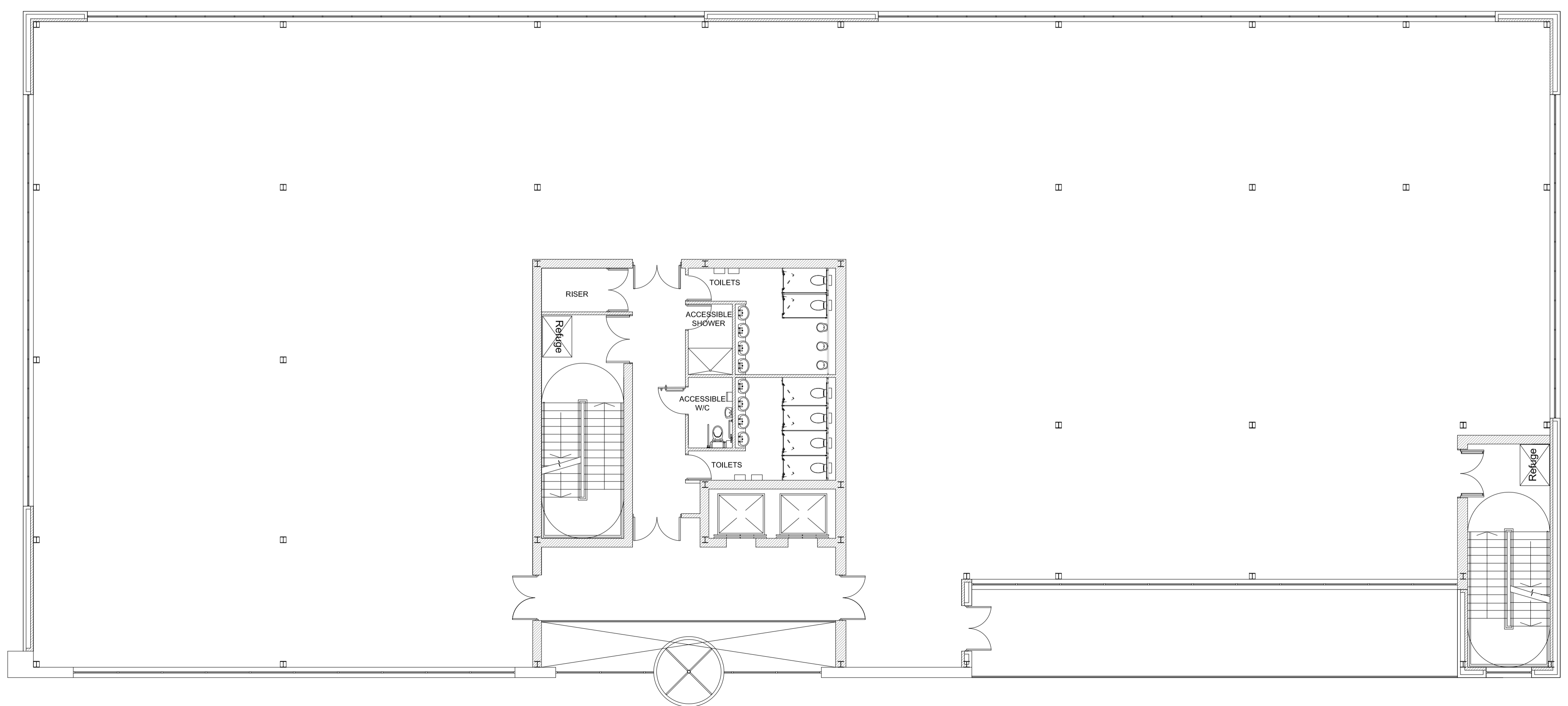
**AREA SCHEDULE**

**Ground Floor G.I.A**  
6,684 SQ FT / 621 SQM  
**Ground Floor N.I.A**  
4,919 SQ FT / 457 SQM

**First Floor G.I.A**  
11,485 SQ FT / 1067 SQM  
**First Floor N.I.A**  
9,816 SQ FT / 912 SQM

**Second Floor G.I.A**  
11,485 SQ FT / 1067 SQM  
**Second Floor N.I.A**  
9,816 SQ FT / 912 SQM

**Total Area**  
G.I.A 29,650 SQ FT / 2,755 SQM  
N.I.A 24,551 SQ FT / 2,281 SQM



PROPOSED UPPER FLOOR PLANS

CLIENT **HG HINTON GROUP**

PROJECT Phase 2  
Corinthian Park  
Grovefield Way  
Cheltenham

TITLE Proposed Office 2 Floor Plans

SCALE @ A1 1:100    DATE 21-07-16

DRAWING 178 - 41    REV C

DRAWN BY R.D    CHECKED BY D.W

**DDP DESIGN DEVELOPMENT PARTNERSHIP**  
ARCHITECTURE + PLANNING + PRINCIPAL DESIGNER

A: Reims House, 8 The Croft, Buntsford Drive, Bromsgrove, B60 4JE  
T: 01527 571 765  
F: 01527 878 207  
E: mail@ddpdesign.co.uk  
W: www.hintongroup.co.uk