

# Cheltenham Plan Proposals Map

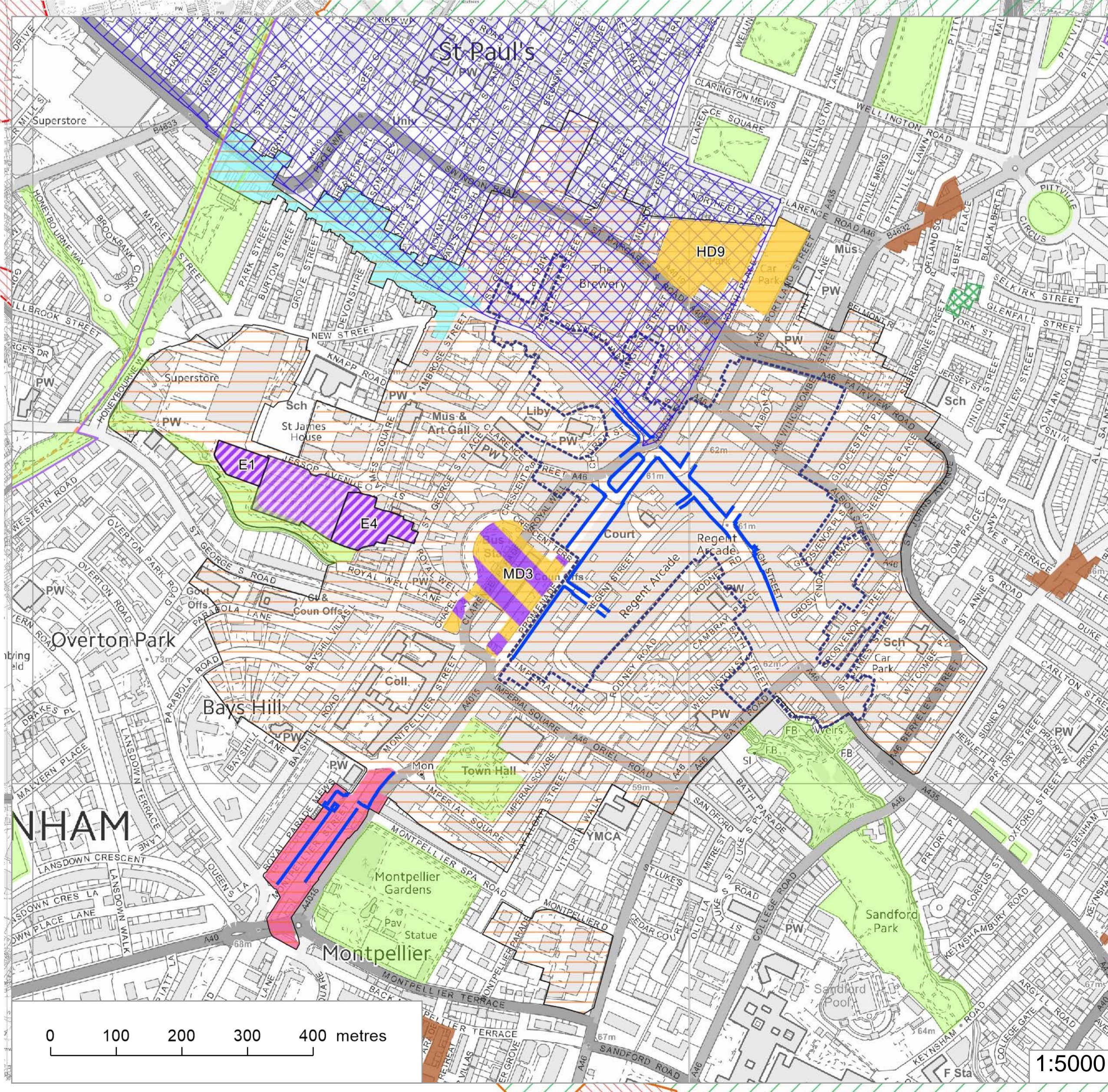
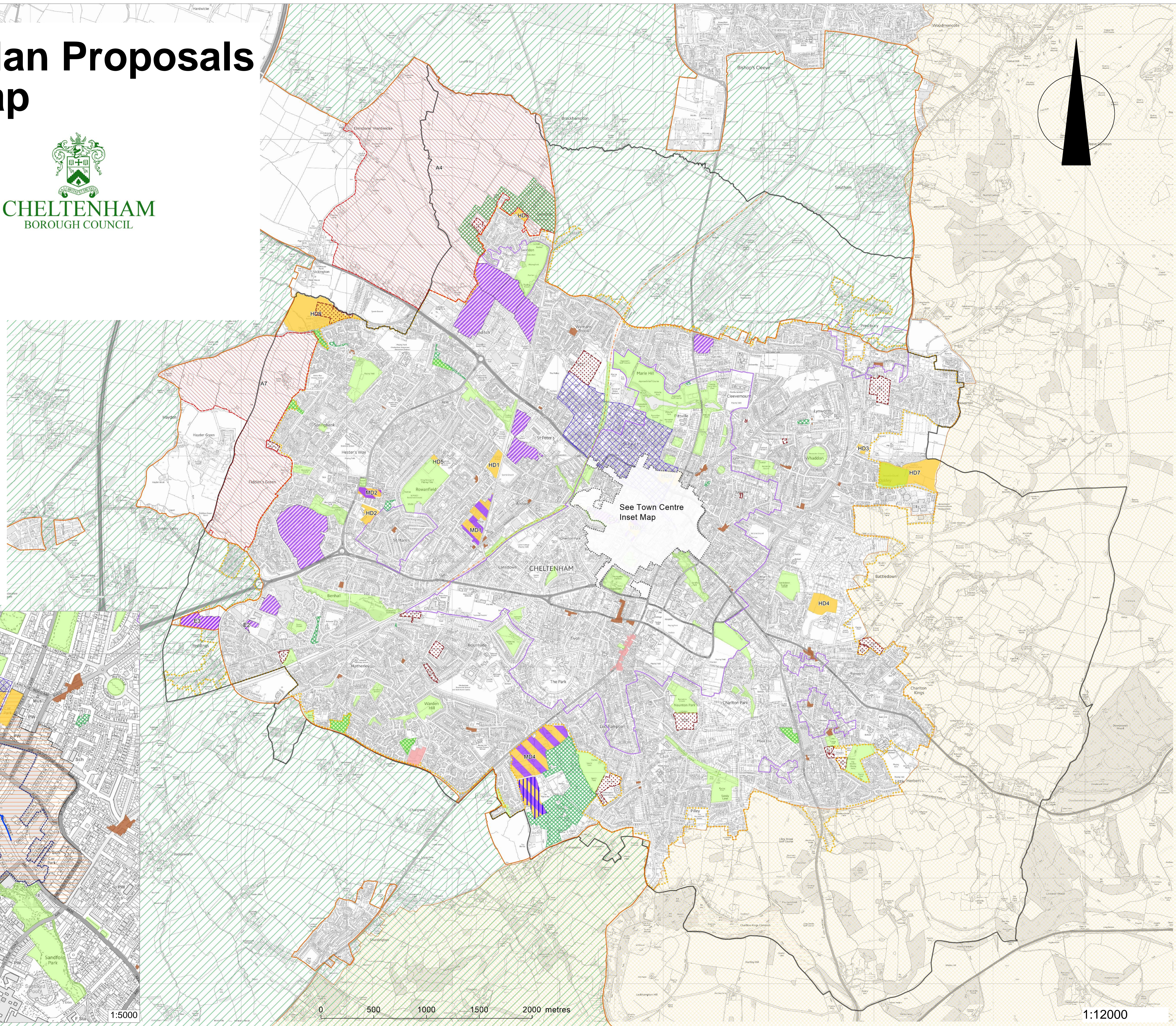
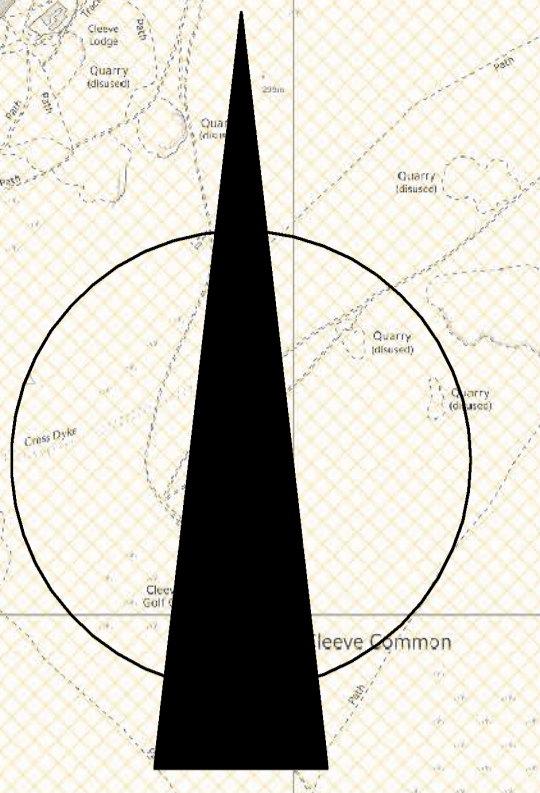
Adopted July 2020



© Crown copyright and database rights 2018 Ordnance Survey 100024384

## Key

- Cheltenham Borough Boundary
- The Cotswolds Area of Outstanding Natural Beauty (JCS SD5)
- Green Belt (JCS SD5)
- Strategic Allocations (JCS SA1, A4 and A7)
- Principal Urban Area (JCS SP2 & SD1)
- Employment Land (CP EM1)
- Conservation Areas (CP HE3)
- Housing allocations (CP H1)
- Mixed-Use Development (CP H2)
- Indicative area for Secondary School (CP MD4)
- HMO Restricted Area (CP HM5)
- Honeybourne Line (CP TN1)
- Local Green Space (CP GI1)
- Allotments (CP CI3)
- Public Green Space (LP2006 GE2)
- District Centres (LP2006 RT1 & RT4)
- Neighbourhood Centres (LP2006 RT1 and RT4)
- Core commercial area (LP2006 RT1 & RT2)
- Central Shopping area (LP2006 RT1)
- Lower High Street shopping area (LP2006 RT1)
- Montpellier shopping area (LP2006 RT1)
- Primary Shopping Frontages (LP2006 RT3)



0 500 1000 1500 2000 metres

1:12000