

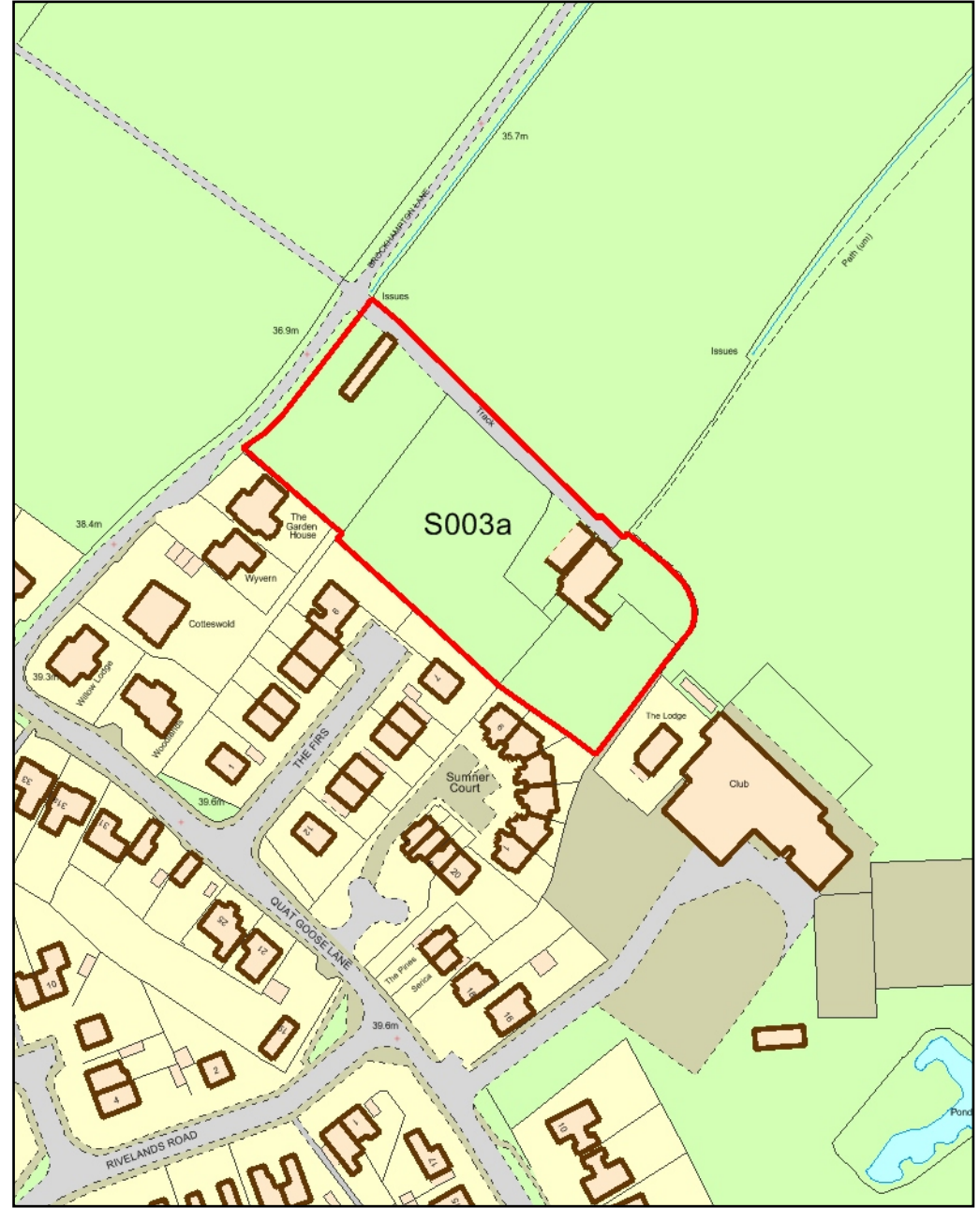
**S001- North West
Cheltenham (previously
known as Land to the north
west of Cheltenham within
Cheltenham)**

Not to scale

S002- Land at Hyde Lane



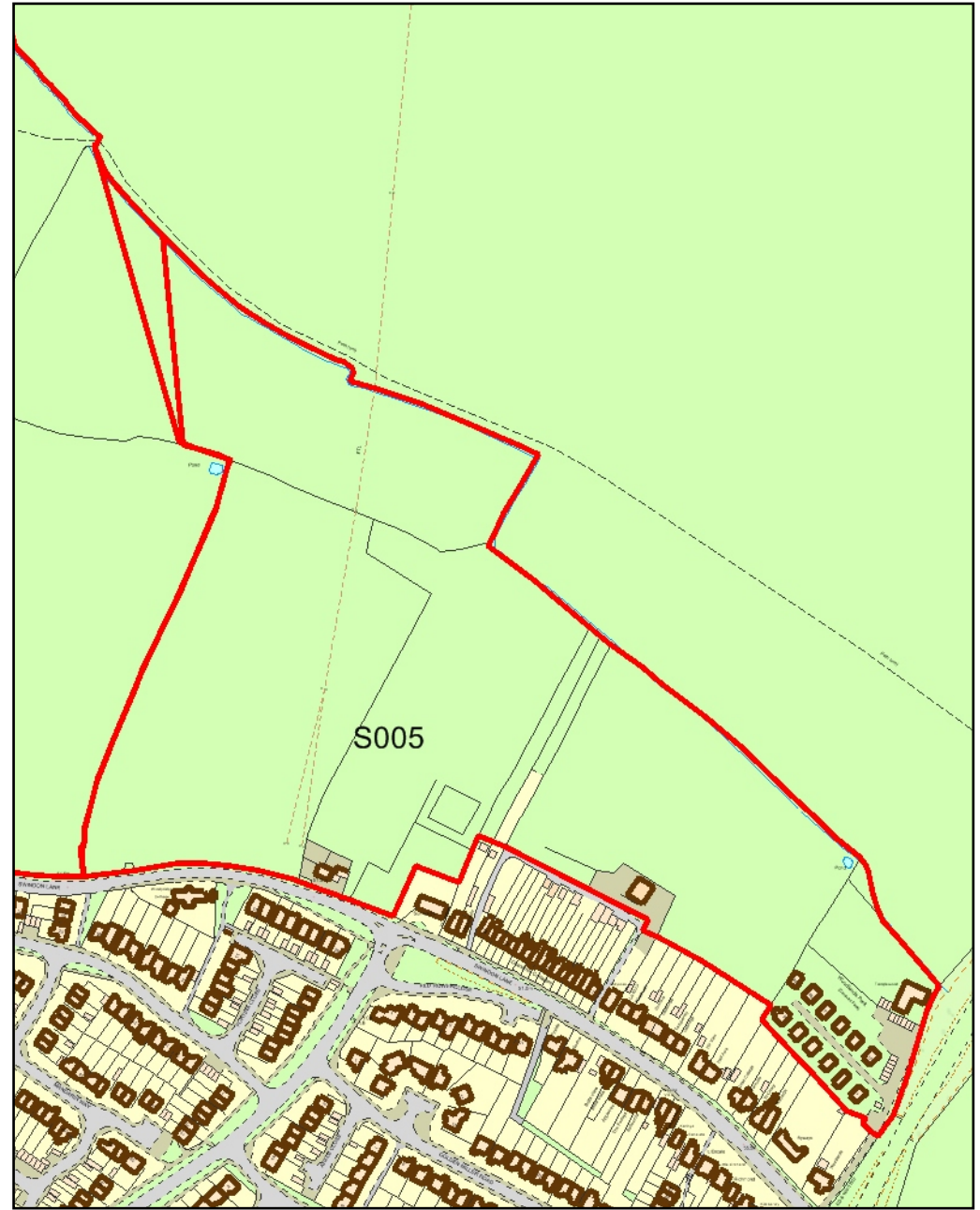
**S003- Land at Hyde Farm
(west section)**



**S003a- Land off
Brockhampton Lane**

Not to scale



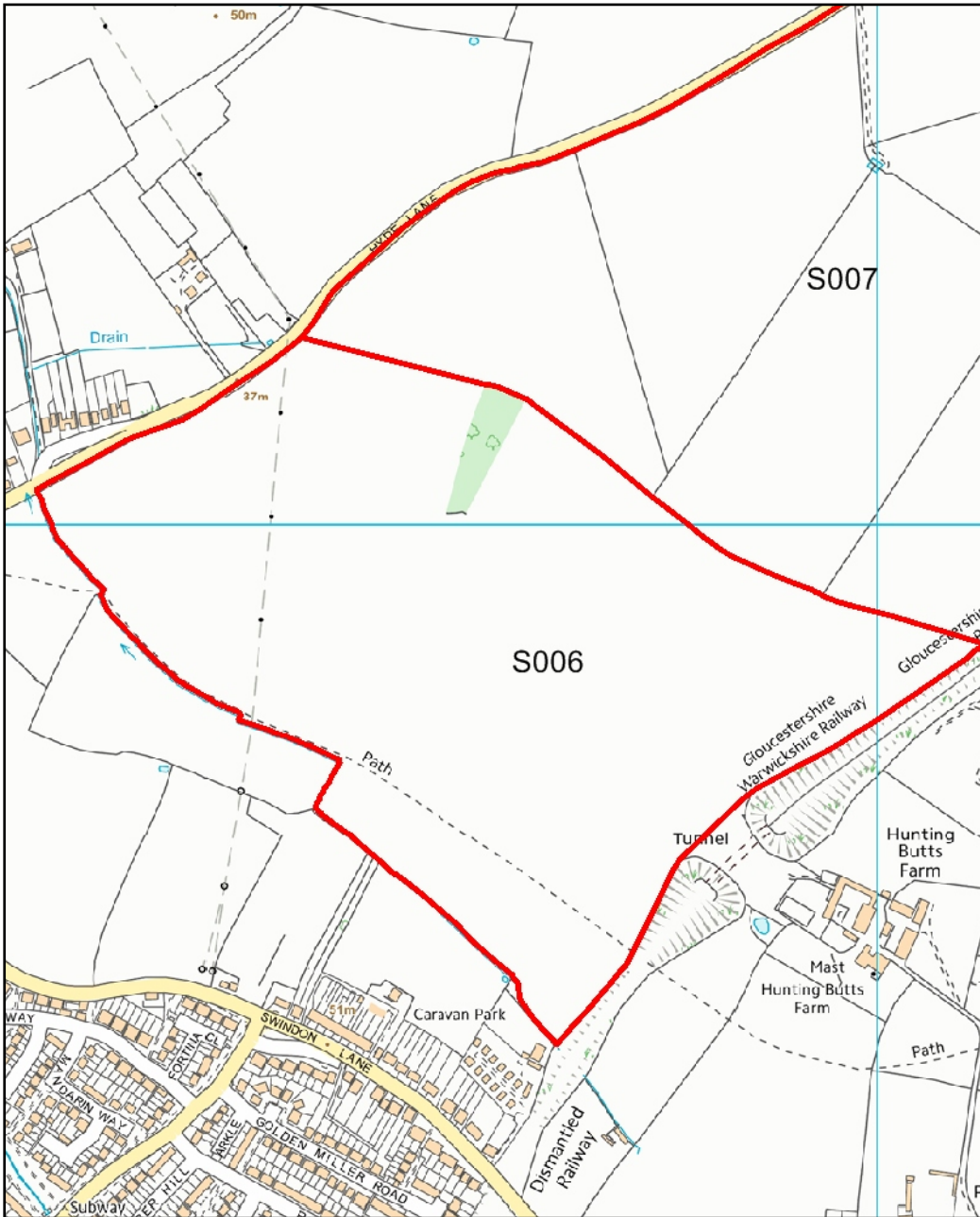


Not to scale

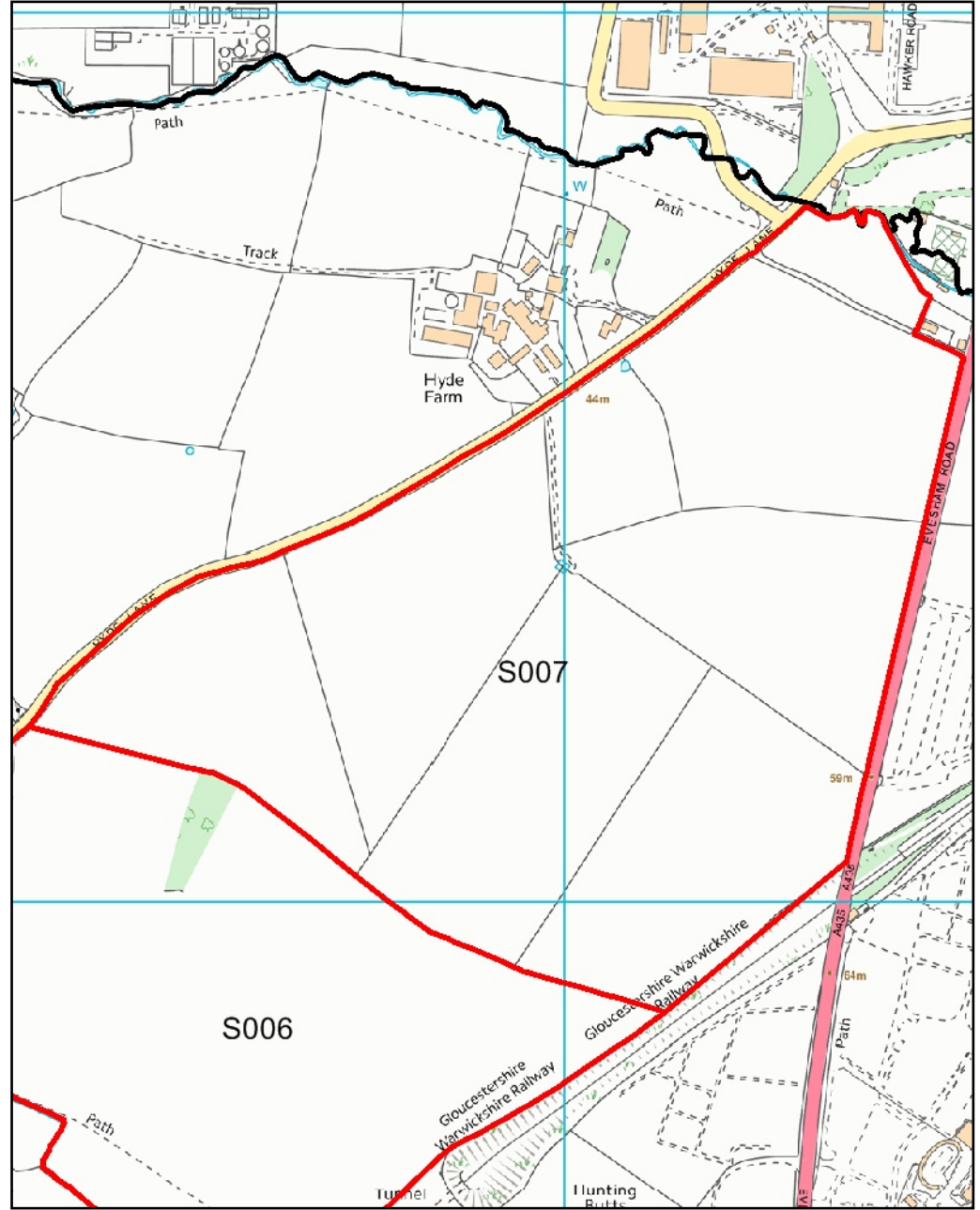
S004- Land at Hunting Butts (west)

S005- Land at Hunting Butts (south)





S006- Land at Hunting Butts (central)



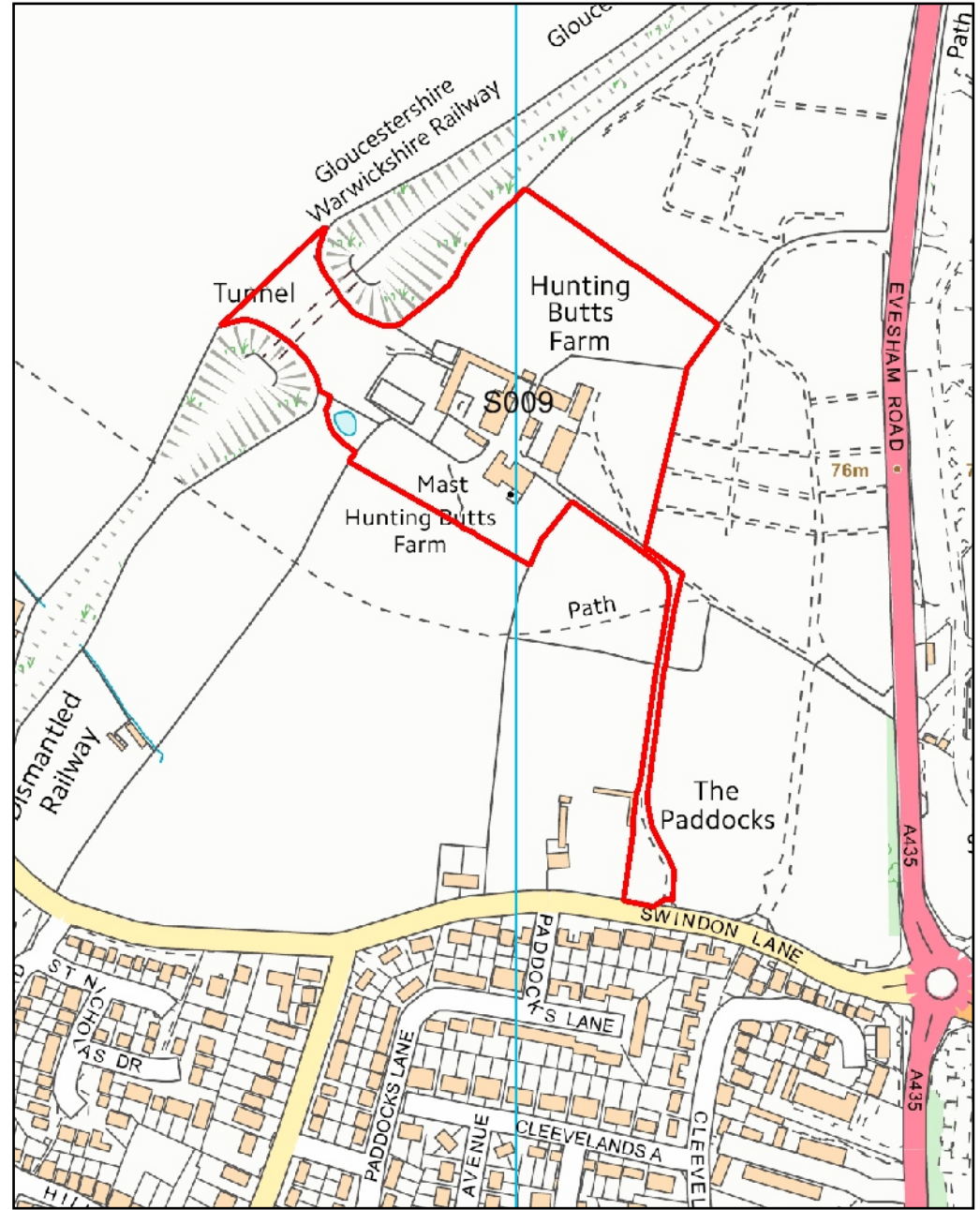
S007- Land at Hyde Farm (east section)

Not to scale





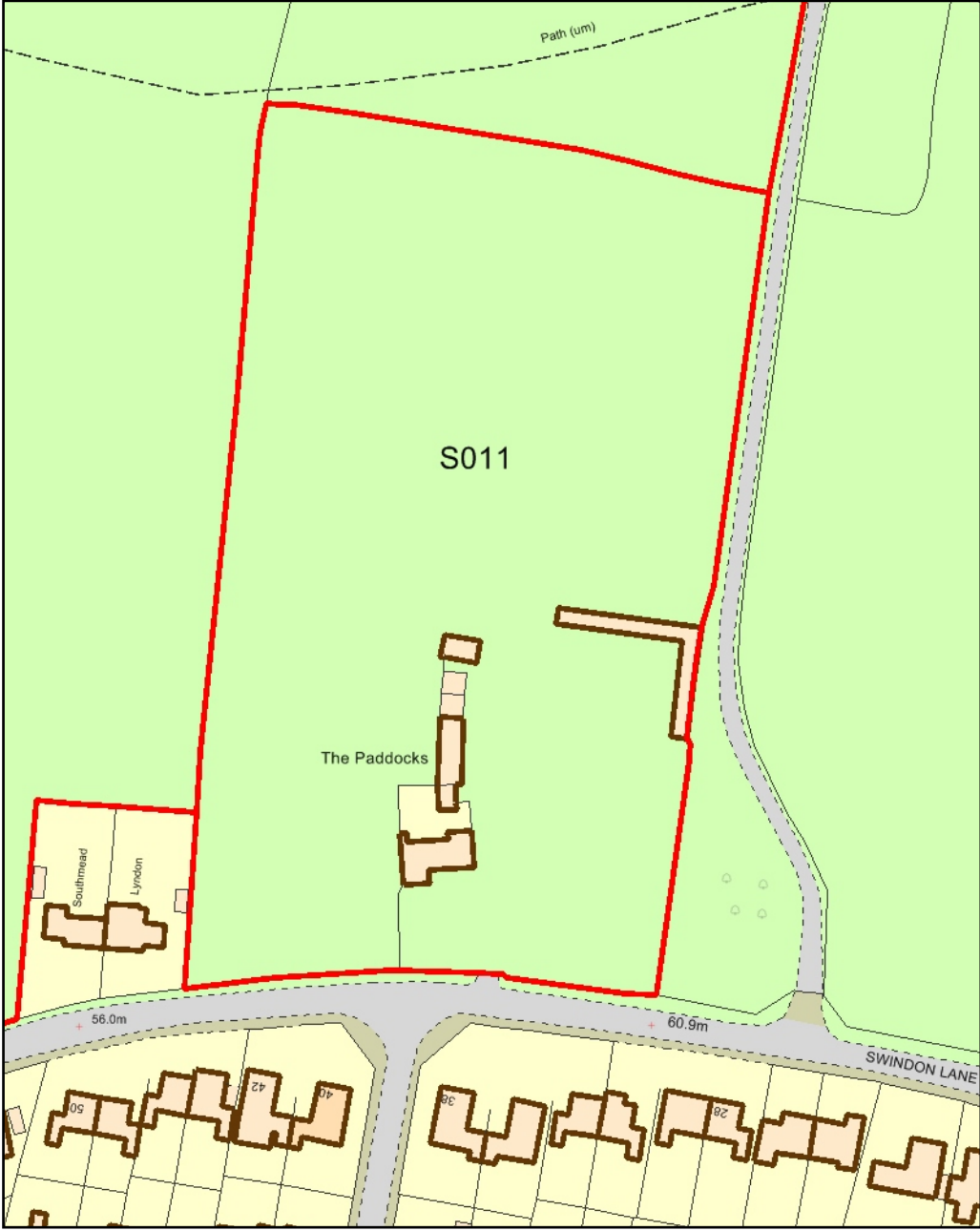
**S008- Blooms garden
Centre, Evesham Road**



**S009- Hunting Butts Farm,
east of railway cutting**

Not to scale



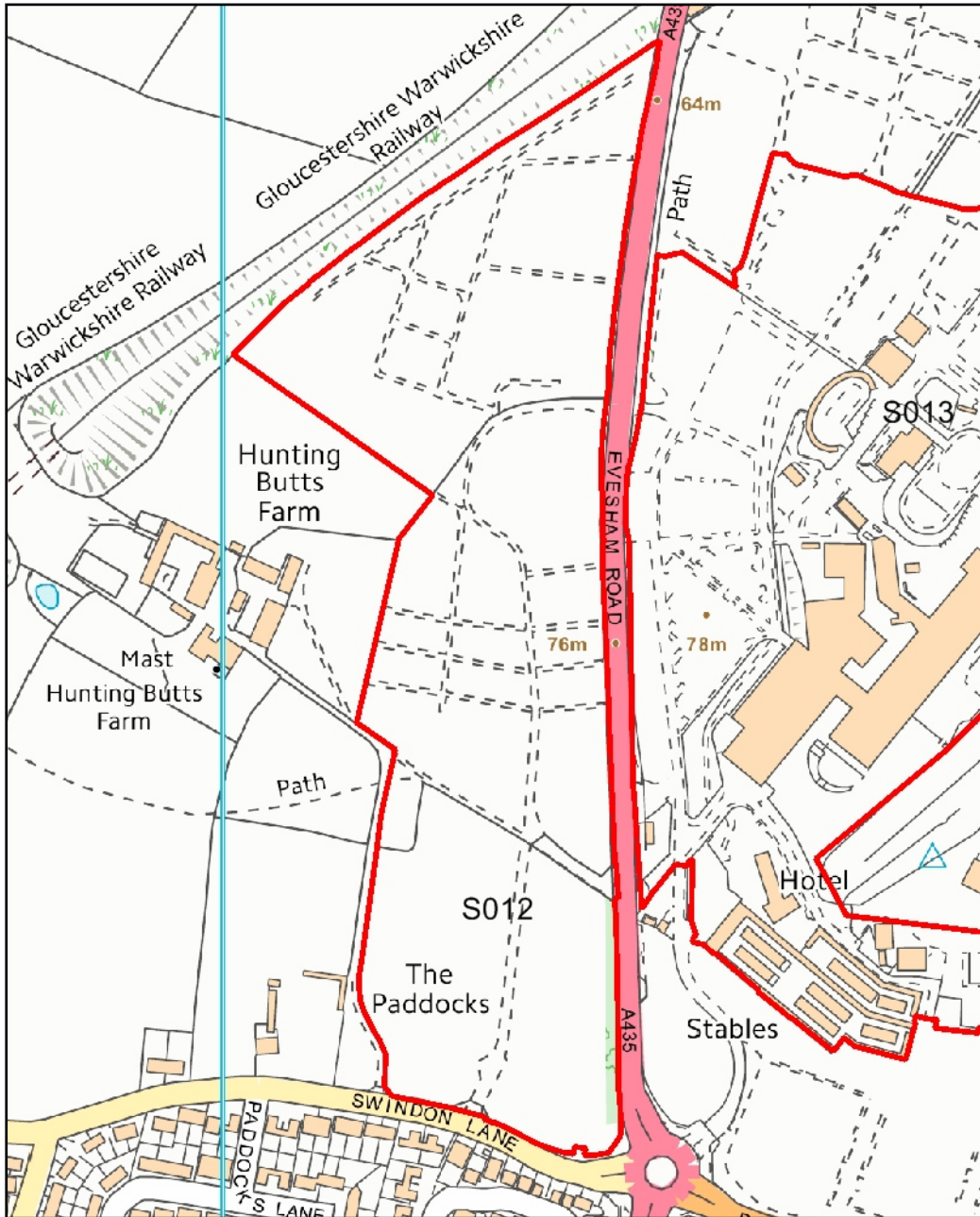


Not to scale

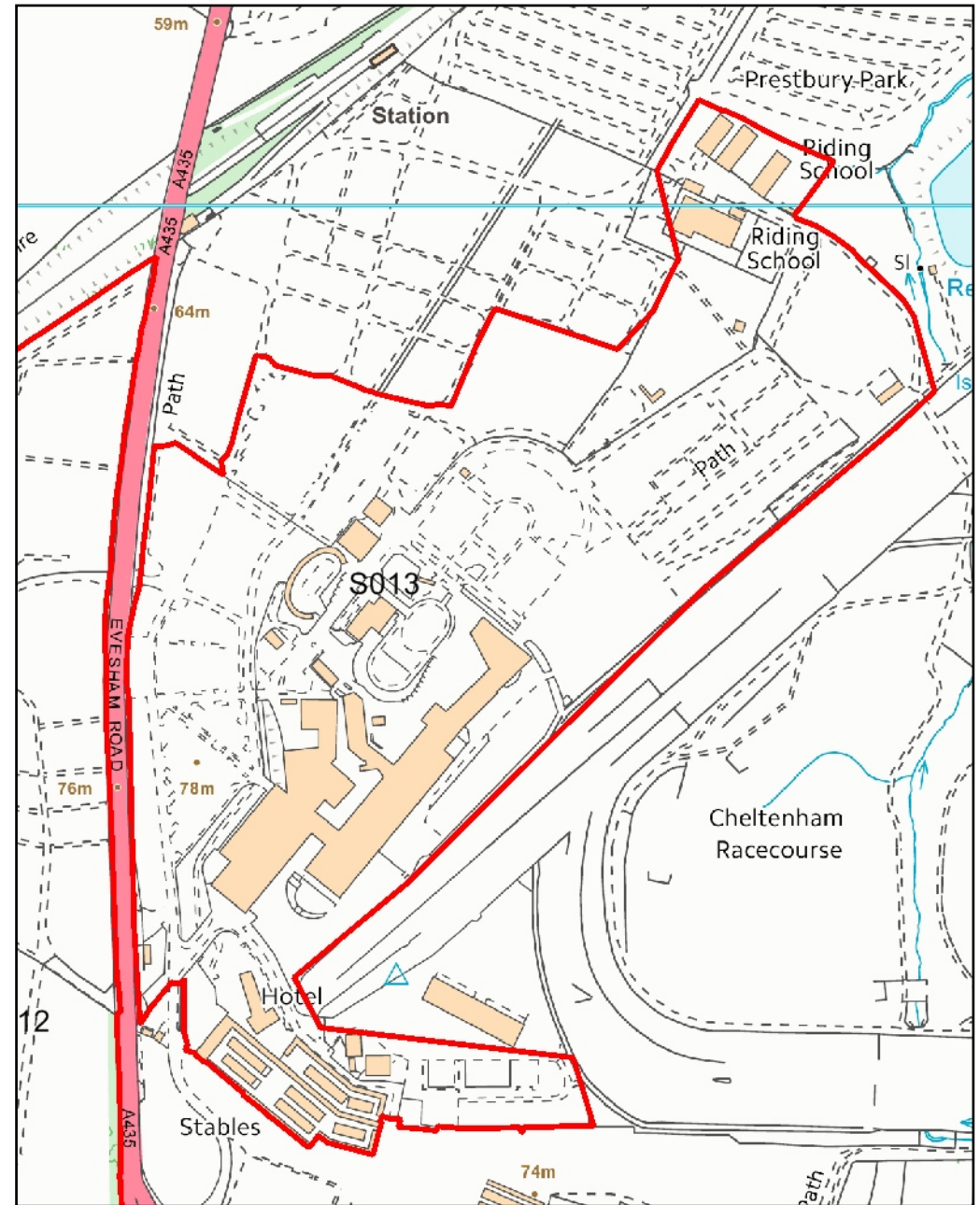
**S010- Land south of
Hunting Butts Farm,
Swindon Lane**

**S011- The Paddocks,
Swindon Lane**





S012- Land at Hunting Butts (east), Evesham Road



S013- Cheltenham Racecourse (north)

Not to scale

