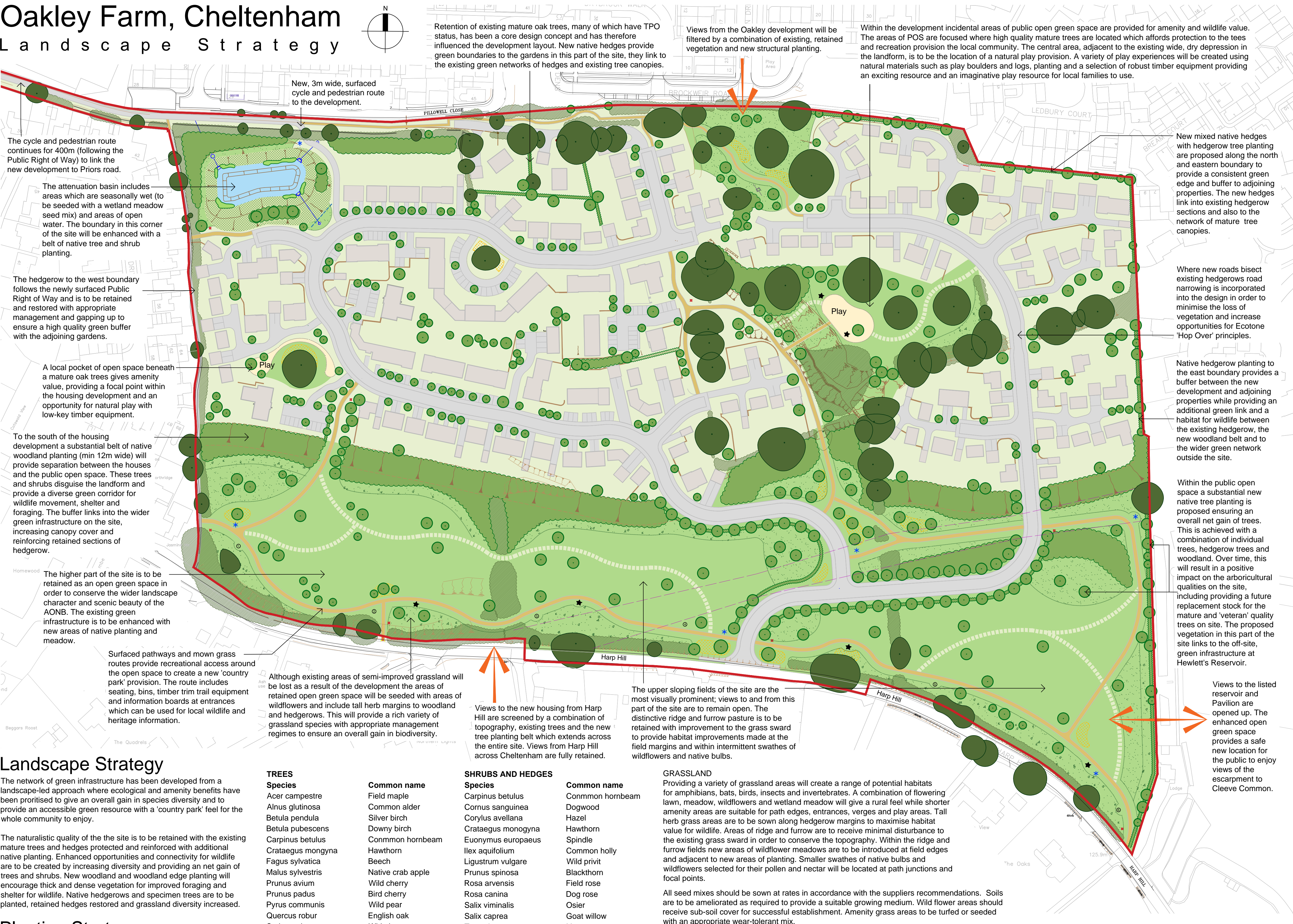


Oakley Farm, Cheltenham

Landscape Strategy



Key

Site boundary

Existing trees

Existing green infrastructure

Native tree and shrub planting

Tree planting

Hedge planting

Grass meadow with wildflowers

Herb margin

Amenity grass

Pasture retained (reinstated areas seeded with flowering lawn mixture)

Wetland meadow and planting to SuDS basin

Mown grass path through pasture

Native bulbs/wildflower planting

Area for natural play to meet EN1176 and EN1177

Nature trail/country park sign

Timber trim trail equipment and sign

Bench

Dog waste bin

Bound gravel footpath

Slope

Notes on key views to/from the site

Easement/wayleave associated with existing services

Notes

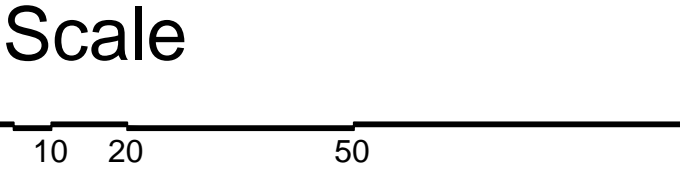
1) Do not scale directly from this drawing.

2) This drawing is to be read in conjunction with all other relevant drawings and information supplied by other consultants.

3) All tree planting in proximity to buildings to be checked by engineers to ensure foundation detailing is appropriate.

4) Refer to the Environmental Statement for further details of the ecological objectives for the site.

5) Refer to the Environmental Statement for further details of the mitigation and effects on the heritage assets for the site.



Landscape Strategy

The network of green infrastructure has been developed from a landscape-led approach where ecological and amenity benefits have been prioritised to give an overall gain in species diversity and to provide an accessible green resource with a 'country park' feel for the whole community to enjoy.

The naturalistic quality of the the site is to be retained with the existing mature trees and hedges protected and reinforced with additional native planting. Enhanced opportunities and connectivity for wildlife are to be created by increasing diversity and providing a net gain of trees and shrubs. New woodland and woodland edge planting will encourage thick and dense vegetation for improved foraging and shelter for wildlife. Native hedgerows and specimen trees are to be planted, retained hedges restored and grassland diversity increased.

Planting Strategy

Planting within areas of public open spaces shall be predominantly native, of known value to wildlife and reflect species in the locality. Oak trees will predominate in areas of public opens space in-keeping with the site character and provide a replacement stock for the future. Hedges and woodland will contain a mix of native species providing flowers, fruits, seeds and shelter. Consideration should also be given to selection of species which are shown to adapt to climate change and to reduce the risk of pests and diseases. The following lists give species which are to be included in the scheme:

TREES

Species	Common name
Acer campestre	Field maple
Alnus glutinosa	Common alder
Betula pendula	Silver birch
Betula pubescens	Downy birch
Carpinus betulus	Common hornbeam
Crataegus mongyna	Hawthorn
Fagus sylvatica	Beech
Malus sylvestris	Native crab apple
Prunus avium	Wild cherry
Prunus padus	Bird cherry
Pyrus communis	Wild pear
Quercus robur	English oak
Sorbus aria	Whitebeam
Sorbus aucuparia	Rowan/Mountain ash
Tilia cordata	Small leaved lime

WETLAND PLANTS

Species	Common name
Caltha palustris	Marsh marigold
Filipendula ulmaria	Meadowsweet
Iris pseudacorus	Yellow flag iris
Lythrum salicaria	Purple loosestrife

SHRUBS AND HEDGES

Species	Common name
Carpinus betulus	Common hornbeam
Cornus sanguinea	Dogwood
Corylus avellana	Hazel
Crataegus monogyna	Hawthorn
Euonymus europaeus	Spindle
Ilex aquifolium	Common holly
Ligustrum vulgare	Wild privet
Prunus spinosa	Blackthorn
Rosa arvensis	Field rose
Rosa canina	Dog rose
Salix viminalis	Osier
Salix caprea	Goat willow
Taxus baccata	Yew
Viburnum opulus	Guelder rose

BULBS

Species	Common name
Anemone nemrosa	Wood anemone
Galanthus nivalis	Snowdrop
Hyacinthoides non-scripta	Bluebell
Narcissus pseudonarcissus	Wild daffodil

GRASSLAND

Providing a variety of grassland areas will create a range of potential habitats for amphibians, bats, birds, insects and invertebrates. A combination of flowering lawn, meadow, wildflowers and wetland meadow will give a rural feel while shorter amenity areas are suitable for path edges, entrances, verges and play areas. Tall herb grass areas are to be sown along hedgerow margins to maximise habitat value for wildlife. Areas of ridge and furrow are to receive minimal disturbance to the existing grass sward in order to conserve the topography. Within the ridge and furrow fields new areas of wildflower meadows are to be introduced at field edges and adjacent to new areas of planting. Smaller swathes of native bulbs and wildflowers selected for their pollen and nectar will be located at path junctions and focal points.

All seed mixes should be sown at rates in accordance with the suppliers recommendations. Soils are to be ameliorated as required to provide a suitable growing medium. Wild flower areas should receive sub-soil cover for successful establishment. Amenity grass areas to be turfed or seeded with an appropriate wear-tolerant mix.

Grass and Wildflower Mixes (80% grasses, 20% wildflowers) from Emorsgate Seeds or equivalent)

Special General Purpose Meadow Mixture EM3

Flowering Lawn Mixture EL1

Meadow Mixture for Wetlands EM8

Special Pollen & Nectar Meadow Mix EN1F

Hedgerow and Light Shade Mix

Species to include Lady's Bedstraw, Wild Carrot, Musk Mallow, Oxeye Daisy, Salad Burnet, Common Sorrel, Common Knapweed, Red Campion, Meadow buttercup, Cowslip, Yellow rattle, Crested Dogtail, Slender creeping red fescue, Smooth-stalked meadow grass, Common bent and smaller Cat's-tail.

Species to include Lady's Bedstraw, Selfheal, Birdsfoot Trefoil, Meadow buttercup, Cowslip, Crested Dogtail, Slender creeping red fescue, Common bent and smaller Cat's-tail

Species to include Oxeye daisy, Ragged robin, Betony, Sweet vernal grass, Meadow foxtail and Quaking grass.

Species to include Wild carrot, Musk mallow, Oxeye daisy, Lady's bedstraw and Red & White Campions.

Species to include Lady's Bedstraw, Hedge Bedstraw and Red & White Campions from British Wildflower seeds or equivalent.